

RED IS ORIGINAL

 DISK #  
H 4  
DWB  
SIZE  
C

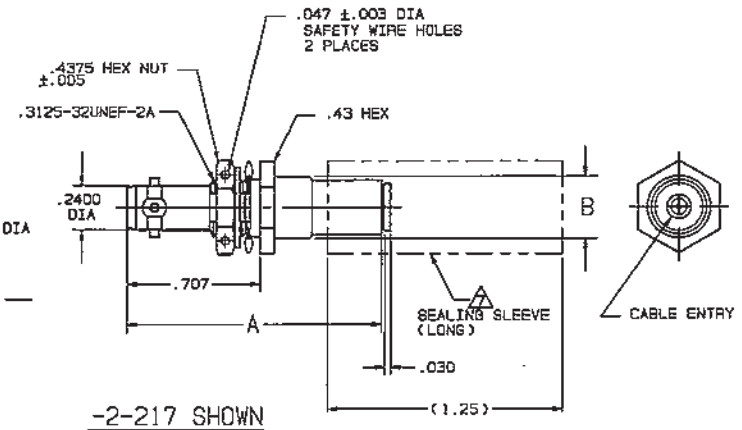
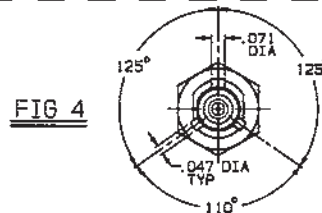
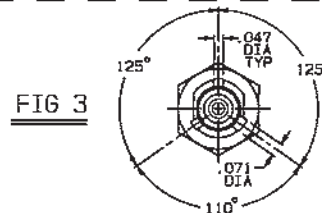
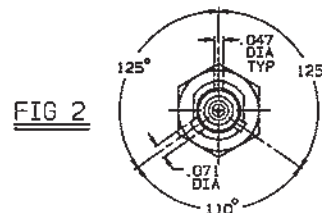
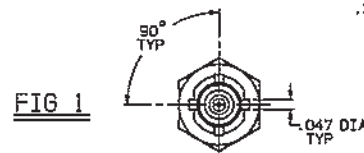
 DATA CONTAINED IN THIS DOCUMENT IS  
 PROPRIETARY TO TROMPETER ELECTRONICS INC.  
 AND SHALL NOT BE DISCLOSED, COPIED OR USED  
 FOR REPRODUCTION OR MANUFACTURE WITHOUT  
 EXPRESS WRITTEN PERMISSION.

REV		ED		DESCRIPTION	3-0117		SH 1
F		10049		PICTORIALLY CHANGED 1.00 FLARED SEALING SLEEVE TO STRAIGHT (1.25) LONG SEALING SLEEVE; GENERAL UPDATE	OWN	APPROVED	DATE
					DKC	<i>DKC</i>	12/15/92

TABLE 1			
DASH NO	MODEL NO	CENTER CONTACT/ INTMO CONTACT TYPE	FIG NO
-1	BJ459ACFLP	SOCKET/PIN	1
-2	BJ459ACFLS	PIN/SOCKET	
-3	BJ459ACPP	SOCKET/PIN	
-4	BJ459ACPS	PIN/SOCKET	2
-5	BJ459ACRP	SOCKET/PIN	
-6	BJ459ACRS	PIN/SOCKET	3
-7	BJ459ACWP	SOCKET/PIN	
-8	BJ459ACWS	PIN/SOCKET	4

TABLE 2					
CABLE GROUP NO	CABLES ACCOMMODATED	A DIM	B DIA	C HEX	ASSEMBLE PER
-201	M17/176-00002	1.365	.334	.255	TAI-162
-202	TWC-78-1, TROMPETER				
-203	TWC-124-1A, TROMPETER				
-204	10B02 RAYCHEM				
-205	TWAC-78-1F2, TROMPETER				
-206	782600130, RAYCHEM				
-208	202-3927, MICRODOT				
-209	202-3942, MICRODOT				
-212	2524E0114, RAYCHEM				
-217	0C875TM24H, GRUMMAN				
-218	EPD221888, RAYCHEM				
-219	252601114, RAYCHEM				
-220	0C875HR1, GRUMMAN				
-221	10614, RAYCHEM				
-222	10613, RAYCHEM				
-223	HMS2-1149, HUGHES				

INCH	MM
.003	0.08
.0050	0.13
.010	0.25
.030	0.76
.047	1.19
.071	1.80
.156	3.96
.2400	6.10
.255	6.48
.274	6.96
.278	7.05
.330	8.38
.334	8.48
.335	8.51
.43	10.92
.4375	11.11
.707	17.96
1.25	31.75
1.365	34.67



SEALING SLEEVE & CRIMP BUSHING LOOSE WITH EACH CONNECTOR EXCEPT NOT USED ON -205, -208 & -223

#### 6. EXAMPLE OF COMPLETE MODEL NO:

BJ459AC W P -201  
 BASIC MODEL NO (SEE TABLE 1) CABLE GROUP NO (SEE TABLE 2)  
 LUG POLARIZATION PL = 4-LUG, FIG 1 P = 3-LUG, FIG 2 R = 3-LUG, FIG 3 W = 3-LUG, FIG 4  
 CENTER & INTERMEDIATE CONTACT TYPE (SEE TABLE 1)

#### 5. EXAMPLE OF COMPLETE PART NO:

3-0117 -1 -201  
 BASIC PART NO DASH NO (SEE TABLE 2) CABLE GROUP NO (SEE TABLE 2)  
 (LUG POLARIZATION, CENTER & INTERMEDIATE CONTACT TYPE: SEE TABLE 1)

#### 4. MAX PANEL THK .156

3. CONCENTRIC TWINAX 4 PIECE ASSY. FULL CRIMP NONINSULATED BULKHEAD MOUNT RECEPTACLE, SOCKET CENTER CONTACT AND PIN INTERMEDIATE CONTACT OR PIN CENTER CONTACT AND SOCKET INTERMEDIATE CONTACT

2. FINISH: TFS-1U (500 HOURS SALT SPRAY; NICKEL)

1. ALL DIM ARE IN INCHES

RECOMMENDED  
PANEL CUTOUT

RECOMMENDED  
HEX CRIMP

QTY	DESCRIPTION	PART NUMBER	ITEM
TOL UNLESS SPECIFIED			
.XX ± .03			
.XXX ± .010			
.XXXX ± .0050			
ANGLES 0°-30°			
DWN DKC 12-2-92			
CHK <i>DKC</i> 12/9/92			
ENGR <i>DKC</i> 12/9/92			
APPR <i>DKC</i> 12/9/92			
NEXT ASSY			
SCALE 2/1		DATE 5-20-87	SHEET 1 OF 2
MATERIAL		CODE IDENT	DRAWING NO.
TROMPETER		14949	3-0117
RF connectivity			
BJ459ACFLP/FLS/PP/			
PS/PP/RS/WP/WS			
		REV	F

# Mouser Electronics

Authorized Distributor

Click to View Pricing, Inventory, Delivery & Lifecycle Information:

[Cinch Connectivity Solutions:](#)

[BJ459ACFLP-222](#)