

BS,C ,201843,641

D

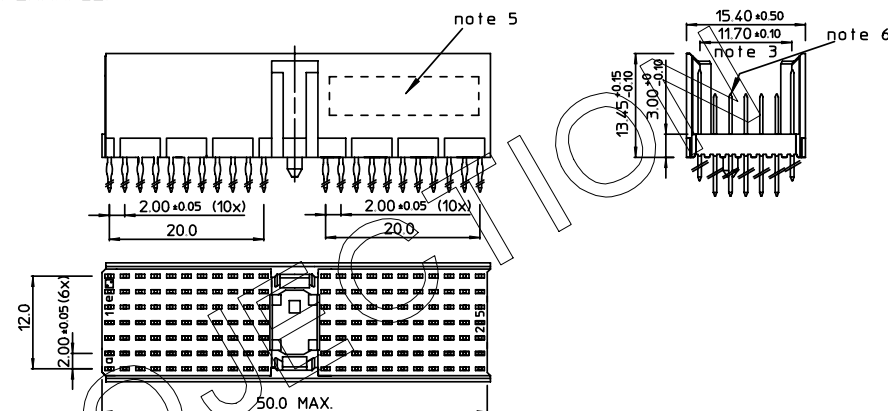
GEN. ST.		01		02		03		04		05		06		07		08		0D		50		60		70		80		90				
INT. ST.		10	11	12	13	14	18	20	31	32	33	34	38	39	40	42	43	44	45	46	48	56	70	72	73	75	76	81	82	83	84	88

REV.	DATE	DESCRIPTION	BY	C'K'D'
A	2001-09-14	CONVERSION REVISION 02	KN	
B	2002-05-28	EC 620086	MF	
C	2005-10-17	105-0196	ALEX B	BKP
D	2006-07-13	106-0111	VIVEK	BKP

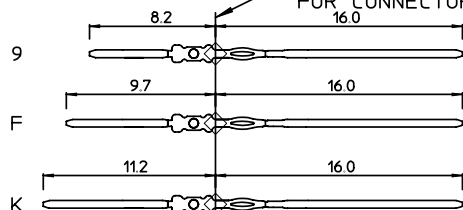
LOADING PATTERN MATING SIDE

f	K	K	K	K	K	K	K	K	K	K	K				K	K	K	K	K	K	K	K	K	K	K	K	K	K	K	
e	F	F	F	F	F	F	F	F	F	F	F				F	F	F	F	F	F	F	F	F	F	F	F	F	F	F	
d	F	F	K	F	F	F	K	F	K	F	9				K	F	K	F	K	F	K	F	K	F	K	F	F	F	F	
c	F	K	F	K	F	F	F	F	F	F	F				F	F	F	F	F	K	F	K	F	F	F	F	F	F	F	
b	F	F	F	F	F	F	F	F	F	F	F				F	F	9	F	F	F	F	F	F	F	F	F	F	F	F	
a	F	F	F	F	F	F	F	F	F	F	F				F	F	F	F	F	F	F	F	F	F	F	F	F	F	F	
z	K	K	K	K	K	K	K	K	K	K	K				K	K	K	K	K	K	K	K	K	K	K	K	K	K	K	
POS	0	1			0	5					1	0			1	5													2	5

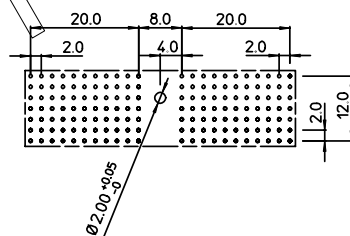
SHEET NR. : 740

LOADED CONNECTOR ASSEMBLY
(FOR EXAMPLE)

CONTACT OVERVIEW

SEATING PLANE
FOR CONNECTOR

LAY-OUT P.C.B.-HOLE

LEAD FREE INDICATOR : LF = LEAD FREE
(DIGIT 15 & 16)

HM2P07PNU1A4

PLATING CODE (DIGIT 13 AND 14)
(REF DWG No. BS,C ,201844,003)

NOTES:

1. THIS PRODUCT IS CSA APPROVED.
2. THIS PRODUCT IS UL RECOGNIZED.
3. MEASURED AT THE BOTTOM.
4. MATERIAL CONTACT: PHOSPHORBRONZE
HOUSING: CREAM WHITE GLASSFILLED
POLYESTER UL-94V0
5. CONNECTOR PRINTED WITH P/N AND DATE CODE.
6. FOR ACTUAL CONTACT LOADINGS, SEE LOADING PATTERN MATING SIDE.
7. SHAPE OF CONNECTOR HOUSING CAN ALTER
DEPENDING ON PRODUCTION LOCATION.
8. THE PRODUCT (LF) MEETS EUROPEAN UNION DIRECTIVES AND OTHER COUNTRY REGULATIONS AS DESCRIBED IN GS-22-008
9. FOR RECOMMENDED PTH DIMENSIONS REFER DRAWING : BS,A ,201572,001

1DEC ±0.2 2DEC ±0.1 ANGLES ±1°	APPR.	DATE	SIGN.	LOADING PATTERN OVERVIEW
WE RESERVE THE RIGHT TO CHANGE DIMENSIONS OR REQUIREMENTS WITHOUT PRIOR NOTICE.	DRAFT	1998-11-30	M.Frel	CAT. No. HM2P07PNU1A4----
ALL DIMENSIONS IN MM	CHECKED			SCALE
	PROD. MGR.			FCI www.fciconnect.com
	PR. ENG. MGR.			
	PR. MGT. MGR.			
	REFERENCES			
				BS,C ,201843,641
				D
				DRAWING No. CUSTOMER DRAWING REVISION

THIS IS OUR EXCLUSIVE PROPERTY. IT IS NOT TO BE COPIED, REPRINTED
OR DISCLOSED TO A THIRD PARTY, NOR USED FOR MANUFACTURING WITHOUT
OUR WRITTEN CONSENT, AND HAS TO BE RETURNED TO US IN CASE OF NO USAGEDIT IS ONZE EIGENDOM EN MAG NOCH NAGEMAAKT. HERDRUKT, OVERGEHAANT AAN
DERDEN, NOCH VOOR FABRIKATIE GEBRUIKT WORDEN, ZONDER ONZE SCHRIFTELIJKE
TOELATING, BIJ NIET GEBRUIK IS TERUGSENDING VERPLICHT.

PDM: Rev:D

STATUS: Released

Printed: Dec 02, 2007

Mouser Electronics

Authorized Distributor

Click to View Pricing, Inventory, Delivery & Lifecycle Information:

[FCI / Amphenol:](#)

[HM2P07PNU1A4GFLF](#) [HM2P07PNU1A4GF](#) [HM2P07PNU1A4GLLF](#)