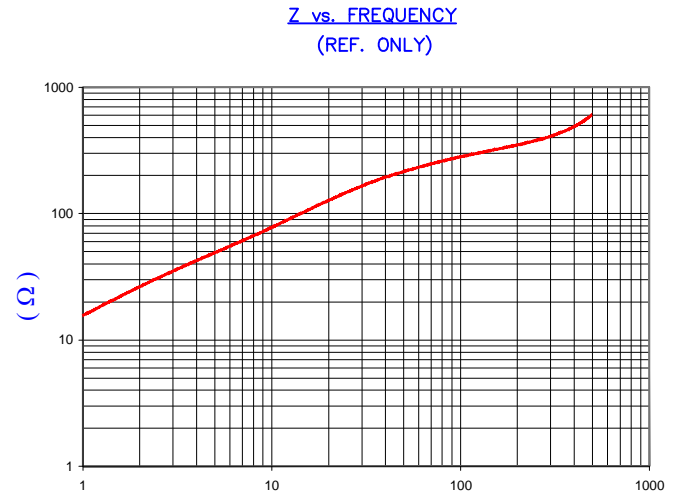


CHAMFER
DETAIL A
SCALE: 4:1

SECTION A-A
SEE DETAIL "A"

**UNCONTROLLED
DOCUMENT**

IMPEDANCE (Z)			
Frequency	25 MHz	100 MHz	300 MHz
Nominal (REF)	150 Ω	280 Ω	400 Ω
Minimum	- Ω	224 Ω	- Ω



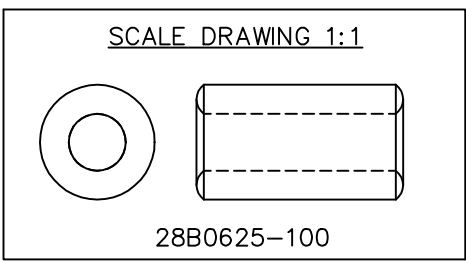
FREQUENCY (MHz)
AGILENT E4991A Impedance/Material Analyzer
HP 16092A Test Fixture REF #3188

FERRITE CORE DIMENSIONS (SPEC): mm/inches

A	15.88 [.625]	+	0.30 [.012]
B	7.87 [.310]	+	0.15 [.006]
C	28.58 [1.125]	+	0.76 [.030]

WEIGHT/1000 20.66 kgs [45.55 Lbs]

NOTES: UNLESS OTHERWISE SPECIFIED
1. COSMETIC SPECIFICATION REFER TO WI-QA-038.



DIMENSIONS ARE IN mm [INCHES].				This print is the property of Laird Tech. and is loaned in confidence subject to return upon request and with the understanding that no copies shall be made without the written consent of Laird Tech. All rights to design or invention are reserved.				
REV	DESCRIPTION	DATE	INT					
L	UPDATE THE LOGO	05/13/15	QIU	PROJECT/PART NUMBER: 28B0625-100		REV L	PART TYPE: FERRITE CORE	DRAWN BY: JAZ
K	UPDATE CO. LOGO CHG CHAMFER DESIGN	03/20/09	JRK	DATE:	09/24/93	SCALE:	2 : 1	MATERIAL:
J	UPDATE Z SPEC AND COMPANY LOGO	06/06/07	JRK	CAD #	28B0625-100-L	TOOL #	B0625	Ferrite
H	UPDATE MIN Z SPEC @100 MHZ	09/26/06	JRK					
G	UPDATE Z SPEC ADD TEST REF#	12/06/04	JRK					
REV	DESCRIPTION	DATE	INT					

Mouser Electronics

Authorized Distributor

Click to View Pricing, Inventory, Delivery & Lifecycle Information:

Laird:

[28B0625-100](#)