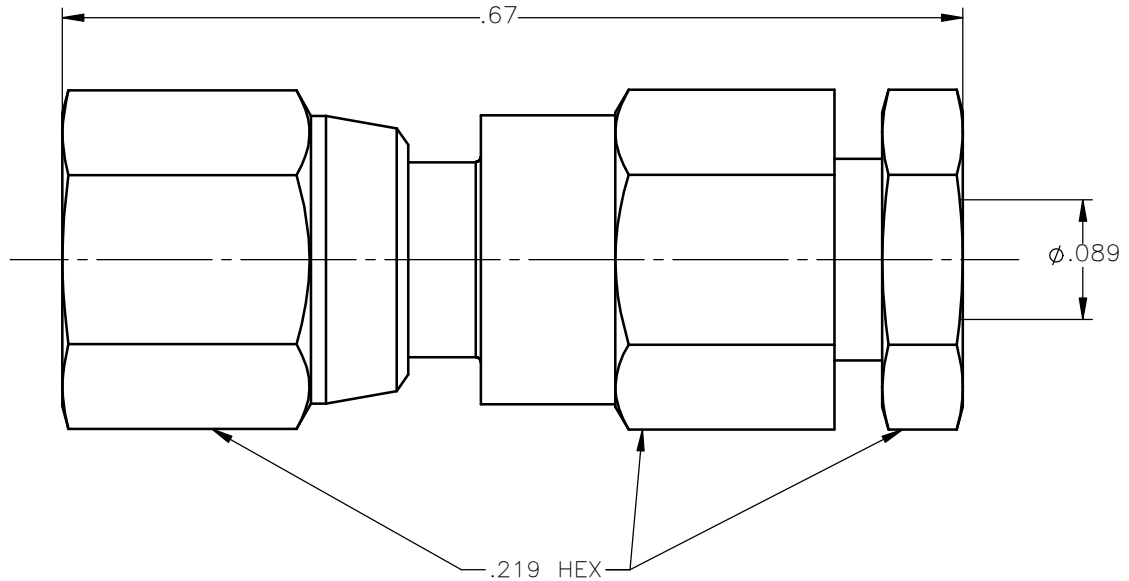


REVISIONS			
REV.	DESCRIPTION	DATE	APPROVED
A	INITIAL RELEASE	10/31/12	J.S.





NOTES:

MATERIALS:

- CONTACT = BERYLLIUM COPPER PER ASTM B196, ALLOY C17300, TEMPER TD04.
- INSULATOR = VIRGIN WHITE TEFLON PER ASTM D1710, GRADE 1, TYPE I, CLASS "B".
- ALL OTHER METAL PARTS = BRASS PER ASTM B16, ALLOY C36000, TEMPER H02.

FINISHES:

- CONTACT = GOLD PLATE PER MIL-G-45204, TYPE II, CLASS 1, GRADE C, OVER .00010 TO .00020 STRESS FREE SULFAMATE NICKEL PER QQ-N-290.
- ALL OTHER METAL PARTS = GOLD PLATE PER MIL-G-45204, TYPE II, CLASS 0, GRADE C, OVER .00010 TO .00020 COPPER STRIKE PER MIL-C-14550.

UNLESS OTHERWISE SPECIFIED DIMENSIONS ARE IN INCHES TOLERANCES ON		DWN: J.S.	DATE 10/31/12	 Property of Radiall This document cannot be reproduced or communicated to a third party without prior written permission of RADIALL.			
		CHKD: D.N.	DATE 10/31/12				
DECIMAL	ANGLE	APVD: J.M.	DATE 10/31/12	SMC STRAIGHT FEMALE PLUG CLAMP TYPE FOR RG-178 & SIMILAR CABLES			
REFERENCE:		MATERIALS & FINISHES: SEE NOTES					
ORIGINATED: J.S. DATE: 10/31/12		SIZE A	FSCM NO. 19505	DWG NO. 1002-1551-002	REV A		
		SCALE 7:1	THIRD ANGLE PROJECTION		SHEET 1 OF 1		

1002-1551-002

Mouser Electronics

Authorized Distributor

Click to View Pricing, Inventory, Delivery & Lifecycle Information:

Radial:

[1002-1551-002](#)