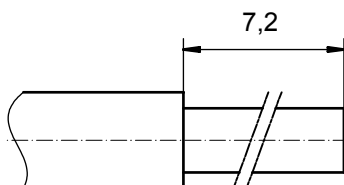


**STRIPPING DIMENSIONS**



Directive 2002/95/EC  
„RoHS“  
Compliant

**NOTES:**

CRIMPING:  
USE CRIMP TOOL: 360X10409X  
WITH TOOL INSERT: 36-000060  
SELECTOR SETTINGS: 7 FOR AWG 10  
6 FOR AWG 12

3	1	REAR SIDE	COPPER ALLOY	min. 8µin HARD GOLD over min. 50µin NICKEL
2	1	RETAINING RING	COPPER ALLOY	NICKEL PLATED
1	1	MATING SIDE	COPPER ALLOY	min. 30µin HARD GOLD over min. 50µin NICKEL
item	quantity	part description	material	plating

APPROVAL # FREIGABE # DEBLOCAGE # AUTORIZACION # APPROVAL	
CUSTOMER APPROVAL DATE:	
NAME:	TITLE:
COMPANY NAME:	
APPROVAL # FREIGABE # DEBLOCAGE # AUTORIZACION # APPROVAL	

partlist			
tolerance ISO 2768-m		dim. in mm	
date		name	
drawn		03.01.08 Schmidt	
appd.		03.01.08 Koch	
norm			
d-old			
a Origin			
rev.		description	
date		name	
tolerance		scale: 8:1	
ISO 2768-m		material: see partlist	
dim. in mm		title:	
date		HIGH POWER CONTACT FEMALE	
name		CRIMP VERSION 30A	
drawn		D-SUB COMBINATION	
appd.		dwg no: Inventor 10	
norm		DIN-A3	
d-old		sh: 1	
a Origin		13K1A2379	
rev.		part no: 13-000311	
description		DIN-A3	
date		sh: 1	
name		part no: 13-000311	



# Mouser Electronics

Authorized Distributor

Click to View Pricing, Inventory, Delivery & Lifecycle Information:

[CONEC:](#)

[16-000010](#) [13-000311](#)