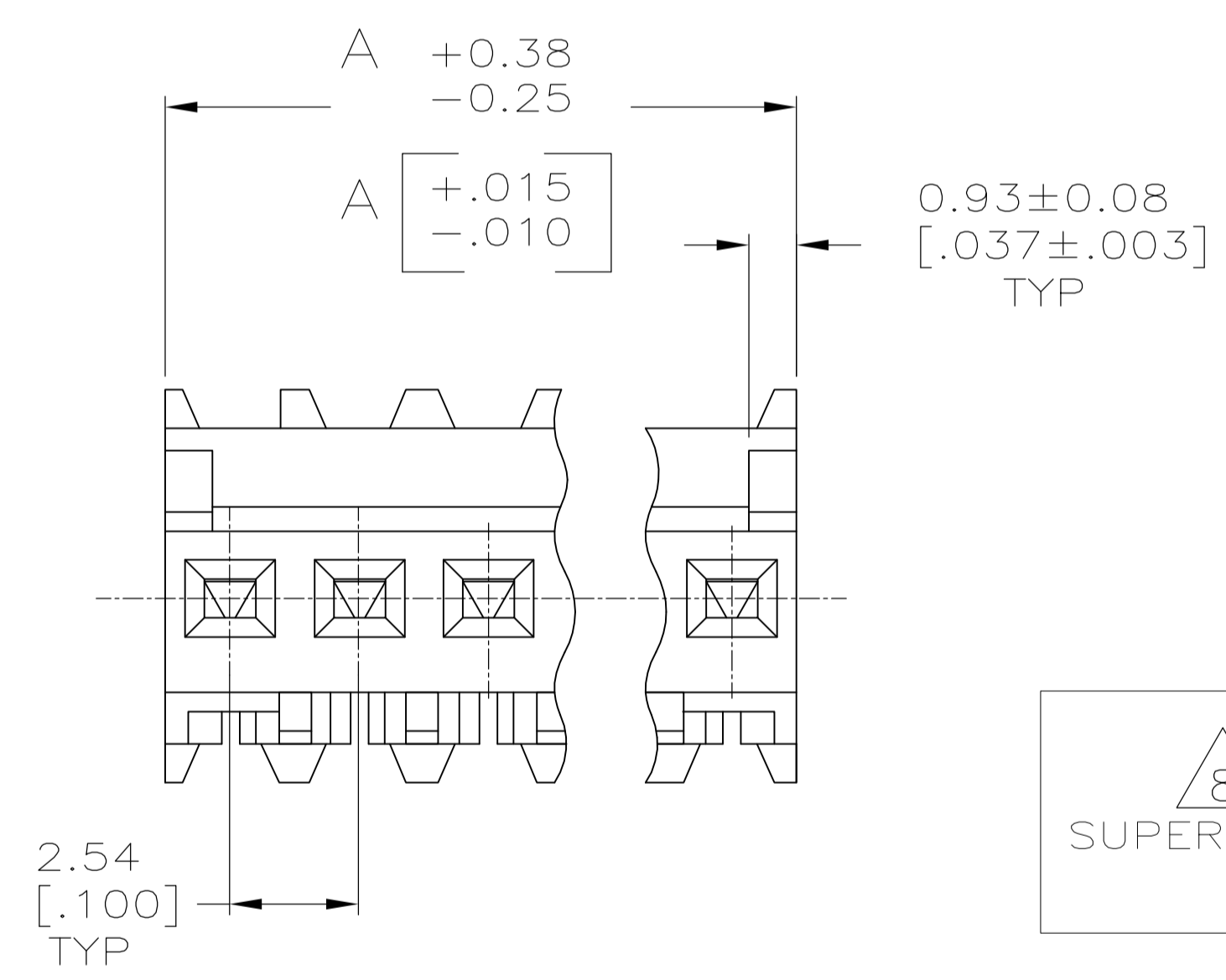
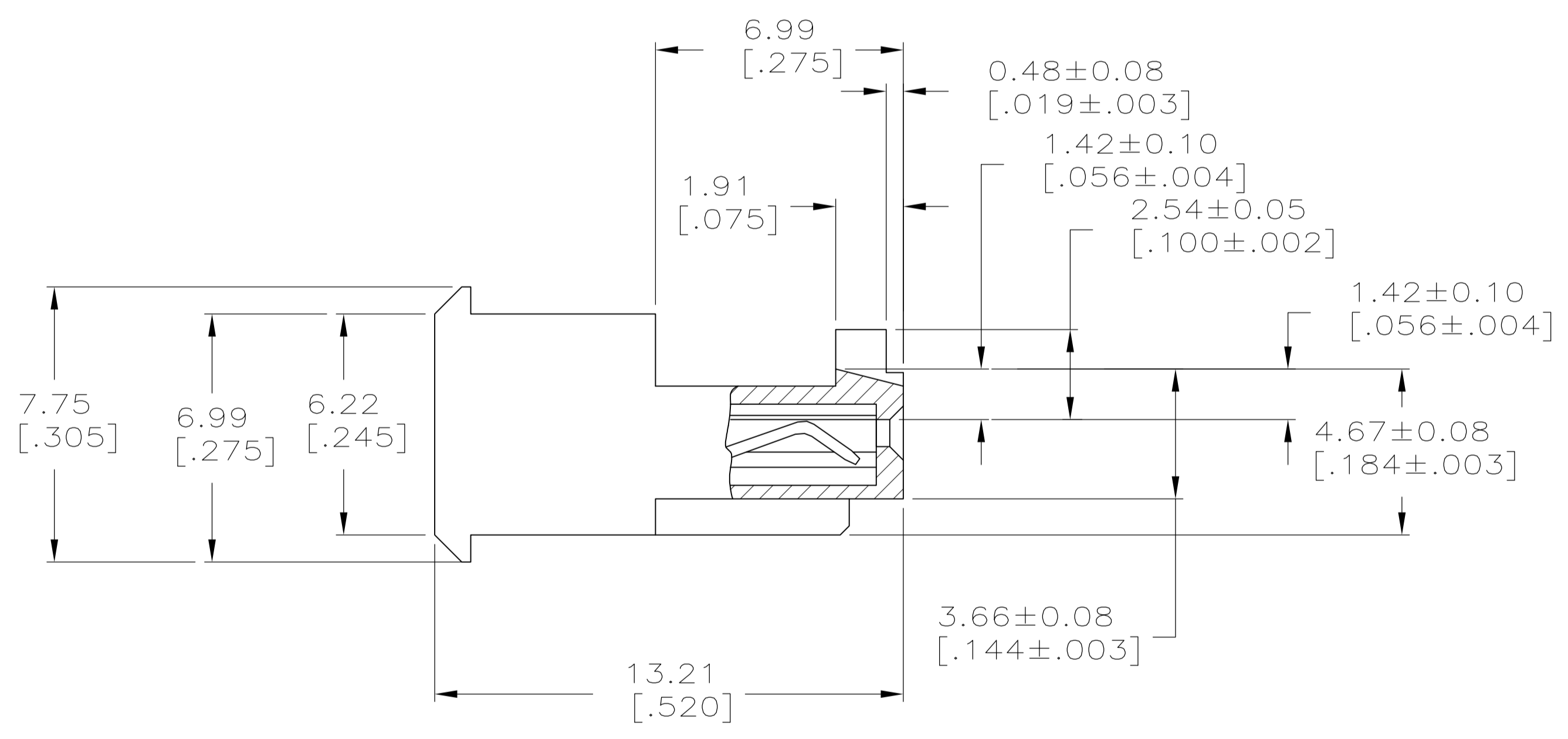
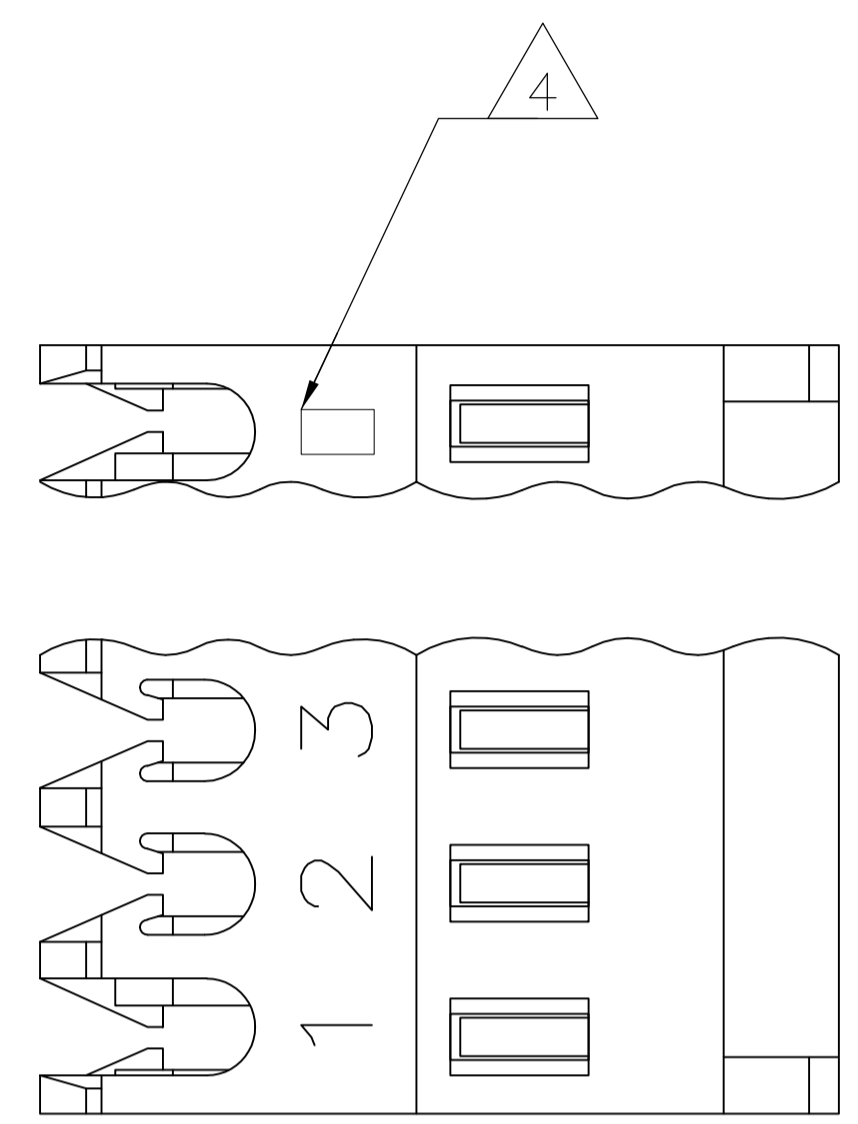

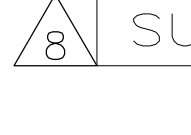
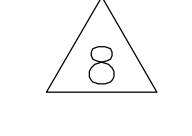


LOC	DIST	REVISIONS				
CM	00	REV	DESCRIPTION	DATE	BY	APPD
		M	ECR-13-008537	16SEP13	M.T	D.Z
		M1	ECO-14-010907	11SEP2014	KR	OC



- 1 MATERIAL: CONNECTOR - NYLON UL94V-2 (RED).
 CONTACTS - 0.30[.012] THICK COPPER ALLOY
 0.00076[.000030] GOLD OR 0.00076[.000030]
 TOTAL GOLD FLASH OVER PALLADIUM NICKEL,
 PER TE CONNECTIVITY'S DISCRETION, IN CONTACT AREA
 WITH MATTE TIN SLOT AREA FOR 644702-2
 THRU1-644702-6
 OR MATTE WHISKER MITIGATED TIN FOR 3-644702-2
- 2 THRU 4-644702-6 OVER NICKEL UNDERPLATE.
- 3 CONTACTS ACCEPT 22 AWG WIRE WITH 1.52 [.060] MAX INSULATION DIAMETER.
- 4 CONTACTS MUST ACCEPT 0.64±0.03 [.025±.001] SQUARE POST AND REMAIN LOCKED IN POSITION.
- 5 IDENTIFICATION NUMBER FOR LAST CIRCUIT MAY NOT APPEAR ON ALL ASSEMBLIES.
- 6 DIMENSIONS IN BRACKETS ARE IN INCHES.
- 7 HOUSING FEATURES ARE: FEED THRU WITH LOCKING RAMP AND POLARIZING TAB.
- 8 OBSOLETE PARTS: OBSOLETE CIS STREAMLINING PER D.RENAUD/D.SINISI



TIN	40.64	[1.600]	16	4-644702-6	
TIN	38.10	[1.500]	15	4-644702-5	
TIN	35.56	[1.400]	14	4-644702-4	
TIN	33.02	[1.300]	13	4-644702-3	
TIN	30.48	[1.200]	12	4-644702-2	
TIN	27.94	[1.100]	11	4-644702-1	
TIN	25.40	[1.000]	10	4-644702-0	
TIN	22.86	[.900]	9	3-644702-9	
TIN	20.32	[.800]	8	3-644702-8	
TIN	17.78	[.700]	7	3-644702-7	
TIN	15.24	[.600]	6	3-644702-6	
TIN	12.70	[.500]	5	3-644702-5	
TIN	10.16	[.400]	4	3-644702-4	
TIN	7.62	[.300]	3	3-644702-3	
TIN	5.08	[.200]	2	3-644702-2	
 SUPERSEDED	TIN-LEAD	40.64	[1.600]	16	1-644702-6
	TIN-LEAD	38.10	[1.500]	15	1-644702-5
	TIN-LEAD	35.56	[1.400]	14	1-644702-4
	TIN-LEAD	33.02	[1.300]	13	1-644702-3
	TIN	30.48	[1.200]	12	1-644702-2
 SUPERSEDED	TIN-LEAD	27.94	[1.100]	11	1-644702-1
	TIN	25.40	[1.000]	10	1-644702-0
	TIN	22.86	[.900]	9	644702-9
	TIN	20.32	[.800]	8	644702-8
	TIN	17.78	[.700]	7	644702-7
 SUPERSEDED	TIN-LEAD	15.24	[.600]	6	644702-6
	TIN-LEAD	12.70	[.500]	5	644702-5
	TIN-LEAD	10.16	[.400]	4	644702-4
	TIN-LEAD	7.62	[.300]	3	644702-3
	TIN	5.08	[.200]	2	644702-2
FINISH	DIM A	NO.OF POSN	ASSEMBLY		

THIS DRAWING IS A CONTROLLED DOCUMENT. **TE CONNECTIVITY**

DIMENSIONS: mm [INCHES]	TOLERANCES UNLESS OTHERWISE SPECIFIED:	0 PLC ±	1 PLC ±	2 PLC ±	3 PLC ± 0.13 [.005]	4 PLC ±	ANGLES ±
-------------------------	--	---------	---------	---------	---------------------	---------	----------

MATERIAL 	FINISH 	WEIGHT	SCALE	SHEET	REV
		A1 00779	8:1	1 of 1	M1

CUSTOMER DRAWING

Mouser Electronics

Authorized Distributor

Click to View Pricing, Inventory, Delivery & Lifecycle Information:

[TE Connectivity:](#)

[3-644702-9](#)