

4

3

2

1

THIS DRAWING IS UNPUBLISHED.

RELEASED FOR PUBLICATION

© COPYRIGHT

ALL RIGHTS RESERVED.

LOC DIST


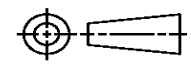
REVISIONS

P	LTR	DESCRIPTION	DATE	DWN	APVD

# REPLACED BY OCEAN STYLE APPLICATOR PART NUMBER

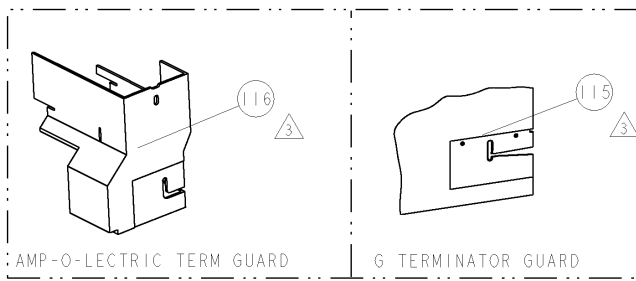
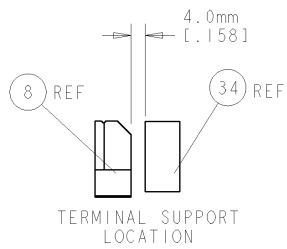
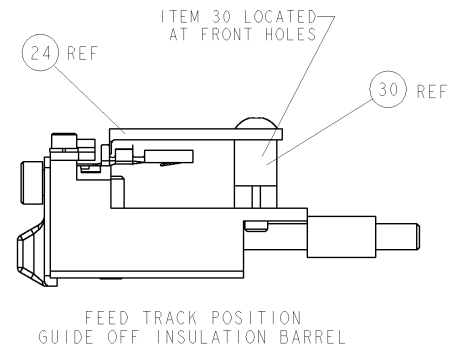
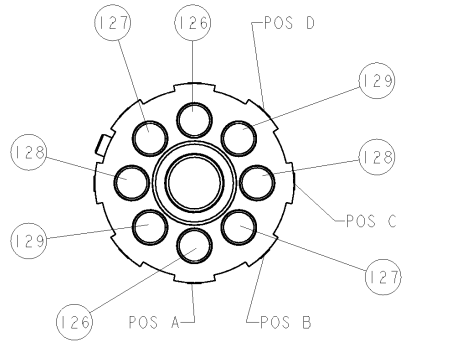
FOR REPLACEMENT PARTS FOR APPLICATOR REFER TO ADDITIONAL PAGE(S). SPARE PARTS KIT (IF LISTED) WILL REMAIN AVAILABLE.

THE REPLACEMENT OCEAN STYLE APPLICATOR HAS THE SAME TERMINATOR/PRESS INTERFACE AS APPLICATOR

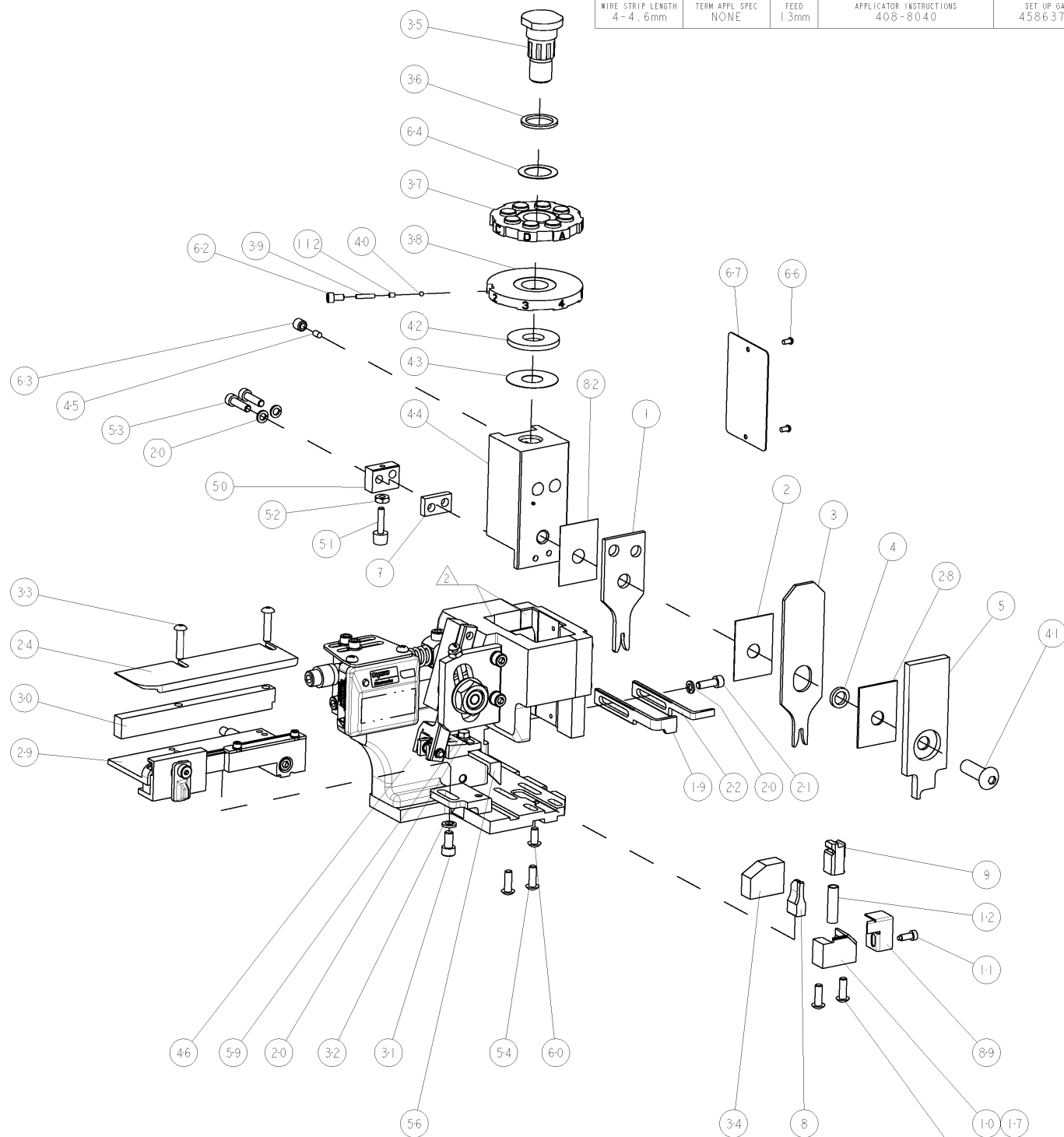
THIS DRAWING IS A CONTROLLED DOCUMENT.		DWN	 TE Connectivity		
DIMENSIONS:		CHK			
TOLERANCES UNLESS OTHERWISE SPECIFIED:		APVD	NAME		
 <ul style="list-style-type: none"> <li>0 PLC ±</li> <li>1 PLC ±</li> <li>2 PLC ±</li> <li>3 PLC ±</li> <li>4 PLC ±</li> <li>ANGLES ±</li> </ul>		PRODUCT SPEC	RESTRICTED TO		
		APPLICATION SPEC	SIZE	CAGE CODE	DRAWING NO
MATERIAL	FINISH	WEIGHT	A3	C-	
		SCALE	SHEET	OF	REV

PART NUMBER	REV	FIRST USED	POWER UNIT	FEED TYPE	DESCRIPTION
1852492-1	A	122500-1	LEADMAKER	POST FEED	CUTS CARRIER
1852492-2	A	565435-5	BENCH MODEL K	PRE FEED	CUTS CARRIER
1852492-3	A	354500-1	BENCH MODEL G	PRE FEED	CUTS CARRIER
1852492-6	A	122500-1	LEADMAKER	POST FEED	CONTINUOUS CARRIER
7-1852492-7	A	-	-	-	SPARE PARTS

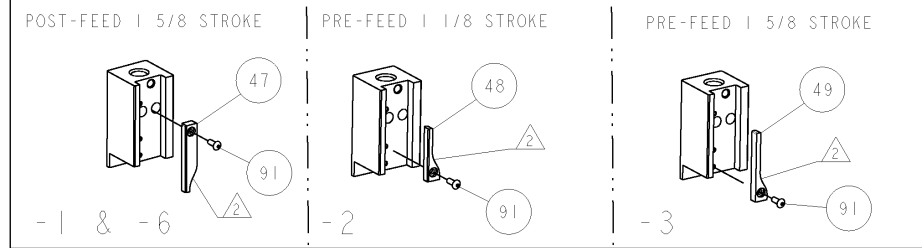
- △ RECOMMENDED SPARE PARTS
- △ GREASE LIGHTLY
- △ GUARD MUST BE IN PLACE WHEN OPERATING APPLICATOR IN A BENCH MACHINE



TERMINAL NAME: SLK 2.8 PIN/RECEPTACLE		KOSTAL TERMINAL - KOSTAL CRIMP SPECS	
TYCO PN	KOSTAL PN	CRIMP HEIGHT	WIRE SIZE
1572789-1	22140472970	A 1.41±0.05mm (.055±.002)	1mm <sup>2</sup>
1572789-1	22124472970	B 1.38±0.05mm (.054±.002)	18AWG
1572790-1	10140499090	C 1.34±0.05mm (.053±.002)	0.75mm <sup>2</sup>
1572089-1	10124499090	D 1.30±0.05mm (.051±.002)	20AWG
1832671-2	10124499090		
CRIMP	SIZE	TYPE	RANGE
-	WIRE 1.91mm [.075]	F	0.75-1mm <sup>2</sup> or 20-18AWG
-	INSUL 2.79mm [.110]	OV	Ø1.7-2.1mm (.067-.083)
WIRE STRIP LENGTH	TERM APPL SPEC	FEED	INSUL
4-4.6mm	NONE	1.3mm	APPLICATOR INSTRUCTIONS 408-8040
			SET UP GAGE 458637-1



REV	QTY	DESCRIPTION	DATE	BY	CHKD		
-	2	2	2	-	2-354779-9	PIN, WIRE DISC, .3135	129
-	2	2	2	-	2-354779-5	PIN, WIRE DISC, .3115	128
-	2	2	2	-	2-354779-2	PIN, WIRE DISC, .3100	127
-	2	2	2	-	2-354779-1	PIN, WIRE DISC, .3095	126
△	-	-	REF	-	455749-1	GUARD WINDOW	116
△	-	-	REF	-	679532-1	INSERT, GUARD	115
-	1	1	1	1	690603-1	SPRING ASSIST AMP-O-MATOR APPLICATOR	112
-	1	1	1	1	1-21002-7	SCR, BTN SKT HD CAP 6-32 X .375	91
-	1	1	1	1	318563-1	GUARD, FRONT CHIP	89
-	1	1	1	1	455888-1	SPACER, CRIMPER	82
-	1	1	1	1	4088040	SF APPL INST 408-8040	72
-	1	1	1	1	217238-1	GENERAL INSTRUCTION PKG	71
-	1	1	1	1	461264-1	PLATE, IDENTIFICATION	67
-	2	2	2	2	21017-2	SCREW, DRIVE	66
-	1	1	1	1	986950-1	WASHER, FLAT PRECISION	64
-	1	1	1	1	21009-2	SCR, SET, SELF LOCKING 1/4-20 X .250	63
-	1	1	1	1	23030-1	SCR, SKT HD CAP 6-32 X .25	62
-	1	1	1	1	22733-8	SCR, BHSC, SELF-LOCKING, 8-32 X .375	60
-	1	1	1	1	2-22603-0	SCR, HEX HD CAP 8-32 X .312	59
-	1	1	1	1	458537-2	PAWL, FEED	56
-	4	4	4	4	2-21002-2	SCR, BTN SKT HD CAP 8-32 X .500	54
-	2	2	2	2	2-21000-8	SCR, SKT HD CAP 8-32 X .625	53
-	1	1	1	1	21018-5	NUT, HEX, REG 6-32	52
-	1	1	1	1	811242-2	BUMPER, HOLD DOWN	51
-	1	1	1	1	690753-1	SPACER, TONKER	50
-	-	-	-	-	690602-6	CAM, PRE FEED, 1 5/8	49
-	-	-	-	-	690602-5	CAM, PRE FEED, 1 1/8	48
-	-	-	-	-	690501-4	CAM, POST FEED, 1 5/8	47
-	1	1	1	1	459456-1	APPL. BASIC SUB ASSY (SIDE WISE MOCA)	46
-	1	1	1	1	690191-1	PLUG, NYLON	45
-	1	1	1	1	455673-1	RAM, SIDE FEED	44
-	1	1	1	1	690125-1	SHIM SUB-ASSY	43
-	1	1	1	1	690124-1	WASHER, RAM (.115)	42
-	1	1	1	1	7-21002-9	SCR, BTN SKT HD CAP 5/16-24 X 1.00	41
-	1	1	1	1	23241-6	BALL, STEEL	40
-	1	1	1	1	690170-1	SPRING, COMPRESSION	39
-	1	1	1	1	690142-1	DISC, INSULATION	38
-	1	1	1	1	354777-1	WIRE DISC, ASSEMBLY	37
-	1	1	1	1	22480-5	SPRING, COMPRESSION	36
-	1	1	1	1	690212-1	POST, RAM	35
-	1	1	1	1	690786-1	TERMINAL SUPPORT	34
-	2	2	2	2	2-21002-4	SCR, BTN SKT HD CAP 8-32 X .750	33
-	1	1	1	1	21024-5	WASHER, SPRG LOCK, REG NO 10	32
-	1	1	1	1	3-21000-4	SCR, SKT HD CAP 10-32 X .375	31
-	1	1	1	1	1320908-1	SPACER, STRIP GUIDE	30
-	1	1	1	1	1633091-3	ASSEMBLY, STRIP GUIDE	29
-	1	1	1	1	1-455888-0	SPACER, CRIMPER	28
-	1	1	1	1	1320928-1	PLATE, STRIP GUIDE	24
-	1	1	1	1	690472-2	STRIPPER	22
-	1	1	1	1	2-21000-7	SCR, SKT HD CAP 8-32 X .500	21
-	4	4	4	4	21024-4	WASHER, SPRG LOCK, REG NO 8	20
-	-	-	-	-	691353-1	STRIPPER	19
-	1	1	1	1	679625-1	SHEAR HOLDER, FRONT (NO CUT)	17
-	1	1	1	1	3-22280-3	SPRING, COMPRESSION	12
-	1	1	1	1	690461-1	STOP, SHEAR	11
-	1	1	1	1	690459-1	SHEAR HOLDER, FRONT	10
△	1	1	1	1	454276-1	FLOATING SHEAR, FRONT	9
△	1	1	1	1	2-1633535-3	ANVIL, COMBINATION	8
△	1	1	1	1	2-240641-0	SPACER	7
-	1	1	1	1	1-455889-4	DEPRESSOR, SHEAR	5
-	1	1	1	1	238011-8	BLOCK, CRIMPER SPACER	4
△	1	1	1	1	2-854830-1	CRIMPER, INSULATION SPECIAL	3
△	1	1	1	1	455888-4	SPACER, CRIMPER	2
△	1	1	1	1	1673600-6	CRIMPER, WIRE	1



DIMENSIONS: INCHES		TOLERANCES UNLESS OTHERWISE SPECIFIED:		MATERIAL: FINISH:	
0 PLC	±	1 PLC	±0.1	2 PLC	±0.01
3 PLC	±0.001	4 PLC	±0.0001	ANGLES	±0.0001
APPROVALS:		DESIGNER: J. BENCHOFF		DATE: 08JUN2007	
DRAWN: R. KNEPPER		CHECKED: G. BAILEY		DATE: 08JUN2007	
APPROVED: J. BENCHOFF		DATE: 17MAY2007		NAME: T. BENCHOFF	
PRODUCT SPEC:		APPLICATION SPEC:		SIZE: A	
CAGE CODE: 00779		DRAWING NO: 1852492		RESTRICTED TO:	
CUSTOMER DRAWING:		SCALE: 3:5		SHEET 1 OF 1	

CUSTOMER VIEWABLE ASSEMBLY

# Mouser Electronics

Authorized Distributor

Click to View Pricing, Inventory, Delivery & Lifecycle Information:

[TE Connectivity:](#)

[1852492-6](#)