

SW. Funct.

Model No. _____

Rating

ON OFF ON
ALCO
AWTE1504
20A AC 125V
20A AC 250V
20A DC 30V
0610

DATE CODE

EXAMPLE
0610
└ ┘
Year Month
2006 Oktober

1 OPERATING TEMPERATURE -20°C TO +70°C

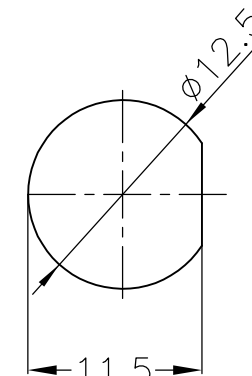
2 OPERATING FORCE MAX 29,4N

3 ALL MATERIALS AND FINISHES COMPLY WITH ROHS DIRECTIVE

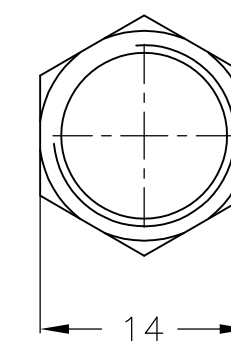
Specifications

Specifications				
Rating	Initial Contact Resistance	Insulation Resistance	Dielectric Strength	Endurance
AC 125V 20A AC 250V 20A DC 30V 20A	MAX 10 milliohms at DC 2 ~ 4V 1A	MIN 1000 M Ohms at DC 500V	AC 1,5kV/1 min (AC 1,8kV/1 sec)	electrically 20.000 cycles at 20 cycles/min (rated load resistive) mechanically 40.000 cycles at 20 cycles/min

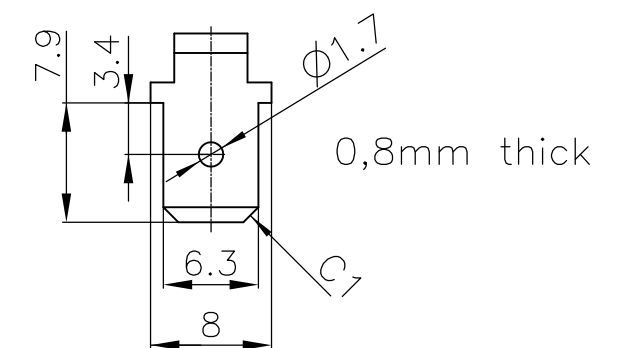
MOUNTING HOLE



NUT 8

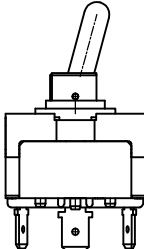
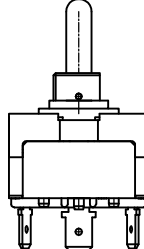
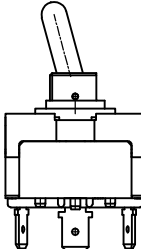


TERMINAL #250



MATERIALS CHART

MATERIALS CHART			
1	Case	PM-EG	
2	F Contact	Silver alloy + C3602BD	
3	Common Contact	C3602BD	
4	Terminal	C2680R	
5	Frame	SPCC	EP-Fe/Zn4/CM
6	Bushing	Zinc alloy	EP-Zn/Cu5,Ni10b
7	Actuator	C3602BD-F	Ep-Cu/Ni3
8	Nut	C3602BD	Ep-Cu/Ni3b
9	L Washer	SK-5	Ep-Fe/Ni3b
10	Shaft	SUS	
11	Rubber seal	NBR	
12	Insert molded rubber	Silcon rubber	
PART NO:	PART NAME:	MATERIAL/SURFACE:	OPTIONAL DESCRIPTION
PART LIST			
TOLERANCES UNLESS OTHERWISE SPECIFIED ACCORDING TO ISO 8015 and ISO 2768-f			

		Function Chart		
				
TE PN	PART	Terminals 1 and 2		Terminals 2 and 3
7-6437630-0	AWTD1504	ON	NONE	ON
7-6437630-1	AWTE1504	ON	OFF	ON
7-6437630-4	AWTF1504	ON	NONE	(ON)
7-6437630-5	AWTG1504	(ON)	OFF	(ON)
7-6437630-6	AWTH1504	ON	OFF	(ON)

(ON)	: momentary action
OFF	: mechanical position without electrical connection
NONE	: no mechanical position

THIS DRAWING IS A CONTROLLED DOCUMENT.

DWN	05SEP2007
WEIDEN	

WEIDEN	
CHK	—

APVD	—
------	---


—	
PRODUCT SPEC	

APPLICATION SPEC

	—
	WEIGHT

--	--	--

CUSTOMER DRAWING

 TE Connectivity

NAME	POWER TOGGLE SWITCH SINGLE POLE PANEL MOUNTING WATERTIGHT
------	--

SIZE	CAGE CODE	DRAWING NO	RESTRICTED TO
------	-----------	------------	---------------

A2	00730	C-1068500	—
----	-------	-----------	---

AZ	00779	G=	1968500	
		SCALE	SHEET	REV

SCALE	1:1	SHEET	1 OF 1	REV	C
-------	-----	-------	--------	-----	---

Mouser Electronics

Authorized Distributor

Click to View Pricing, Inventory, Delivery & Lifecycle Information:

[TE Connectivity:](#)

[AWTH1504](#)