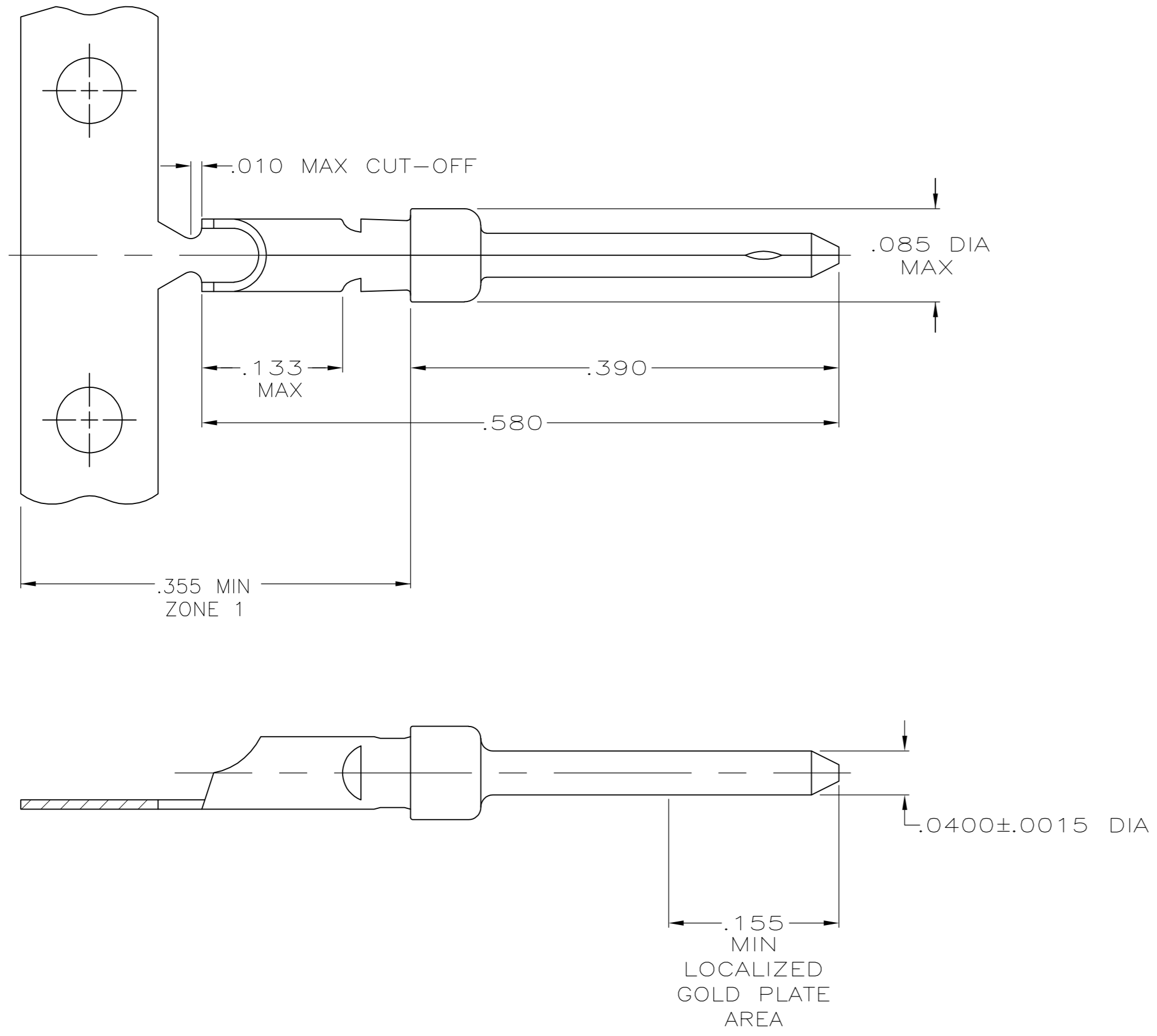


| LOC | DIST | REVISIONS | | | |
|-----|------|-------------|---------------------------|-----------|---------|
| P | LTR | DESCRIPTION | DATE | DWN | APVD |
| GP | 00 | S | REVISED PER ECO-12-021696 | 28FEB2012 | CJV CWR |



1. GOLD PLATING MAY NOT APPEAR ON CARRIER STRIP.
2. GOLD PLATING PER MIL-G-45204.
NICKEL PLATING PER QQ-N-290.
TIN PLATING PER MIL-T-10727.
3. GOLD PLATED IN LOCALIZED GOLD PLATE AREA AS FOLLOWS:
.000030 MIN GOLD IN MATED AREA, GOLD FLASH ON REMAINDER OF LOCALIZED GOLD PLATE AREA, .000100 MIN MATTE TIN IN ZONE 1, ALL OVER .000050 MIN NICKEL UNDERPLATE.
OR
GOLD FLASH OVER PALLADIUM-NICKEL PLATE, .000030 MIN TOTAL IN MATED AREA, GOLD FLASH ON REMAINDER OF LOCALIZED GOLD PLATE AREA, .000100 MIN MATTE TIN IN ZONE 1, ALL OVER .000050 MIN NICKEL UNDERPLATE.
4. GOLD PLATED IN LOCALIZED GOLD PLATED AREA, GOLD FLASH IN MATED AREA, TIN PLATED WIRE BARREL, OVER .000030 NICKEL.
5. GOLD PLATED IN LOCALIZED GOLD PLATED AREA, .000030 GOLD IN MATED AREA, TIN PLATED WIRE BARREL, OVER .000030 NICKEL.
6. .046 MAX DIA CONDUCTOR (UP TO 18 AWG).

| | | | | |
|----------|----------------|--------|-------------|-------------|
| | SMALL PACK | 3 | LOOSE PIECE | 66570-8 |
| OBSOLETE | STANDARD | 5 | STRIP | 66570-6 |
| OBSOLETE | STANDARD | 4 | STRIP | 66570-4 |
| | STANDARD | 3 | LOOSE PIECE | 66570-3 |
| | STANDARD | 3 | STRIP | 66570-2 |
| | PACKAGING TYPE | FINISH | TYPE | PART NUMBER |

| | | | | |
|--|--|----------------------|---|-----------------|
| THIS DRAWING IS A CONTROLLED DOCUMENT. DIMENSIONING AND TOLERANCING PER ASME Y14.5M-2009 | | DWN S.WELDON 9-9-86 | TE TE Connectivity | |
| | | CHK C.RICHARD 9-9-86 | | |
| DIMENSIONS: INCHES | TOLERANCES UNLESS OTHERWISE SPECIFIED: | APVD - | NAME | |
| | 0 PLC ± - | PRODUCT SPEC | PIN CONTACT, SIZE 20 DF, WITH SOLDER CUP, AMPLIMITE | |
| | 1 PLC ± - | APPLICATION SPEC | | |
| | 2 PLC ± - | | | |
| | 3 PLC ± .005 | | | |
| MATERIAL BRASS PER MIL-C-50 | FINISH SEE TABLE 2 | WEIGHT - | SIZE A2 | CAGE CODE 00779 |
| | | | DRAWING NO C-66570 | RESTRICTED TO - |
| | | CUSTOMER DRAWING | SCALE 10:1 | SHEET 1 of 1 |
| | | | | REV S |

Mouser Electronics

Authorized Distributor

Click to View Pricing, Inventory, Delivery & Lifecycle Information:

[TE Connectivity:](#)

[66570-2](#)