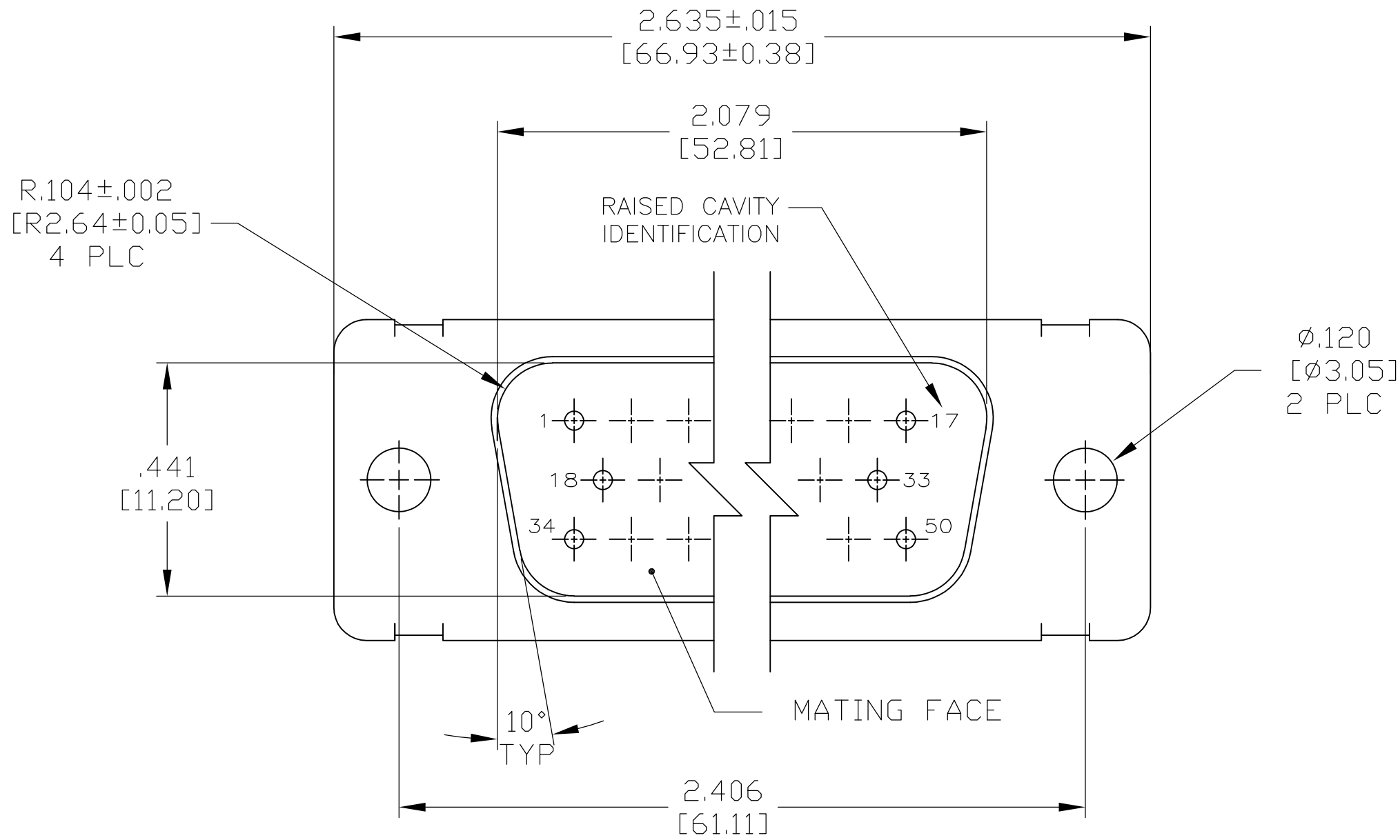
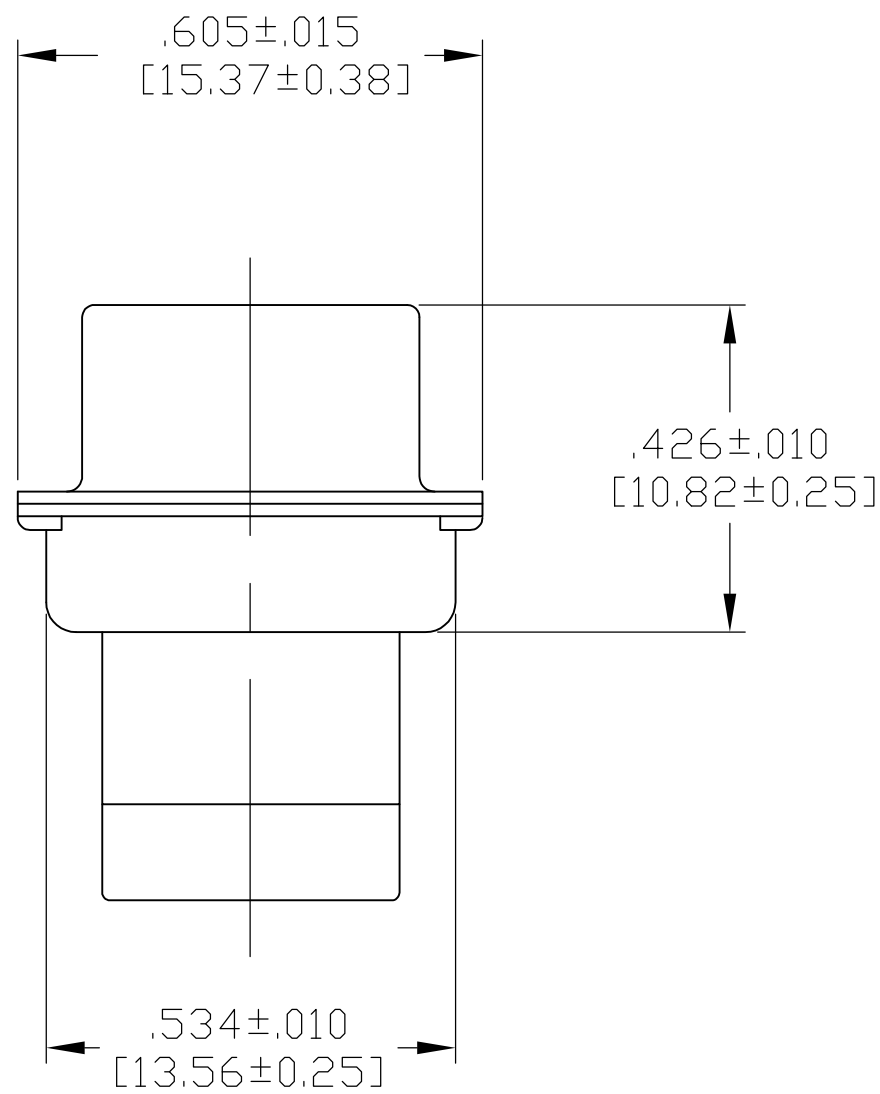
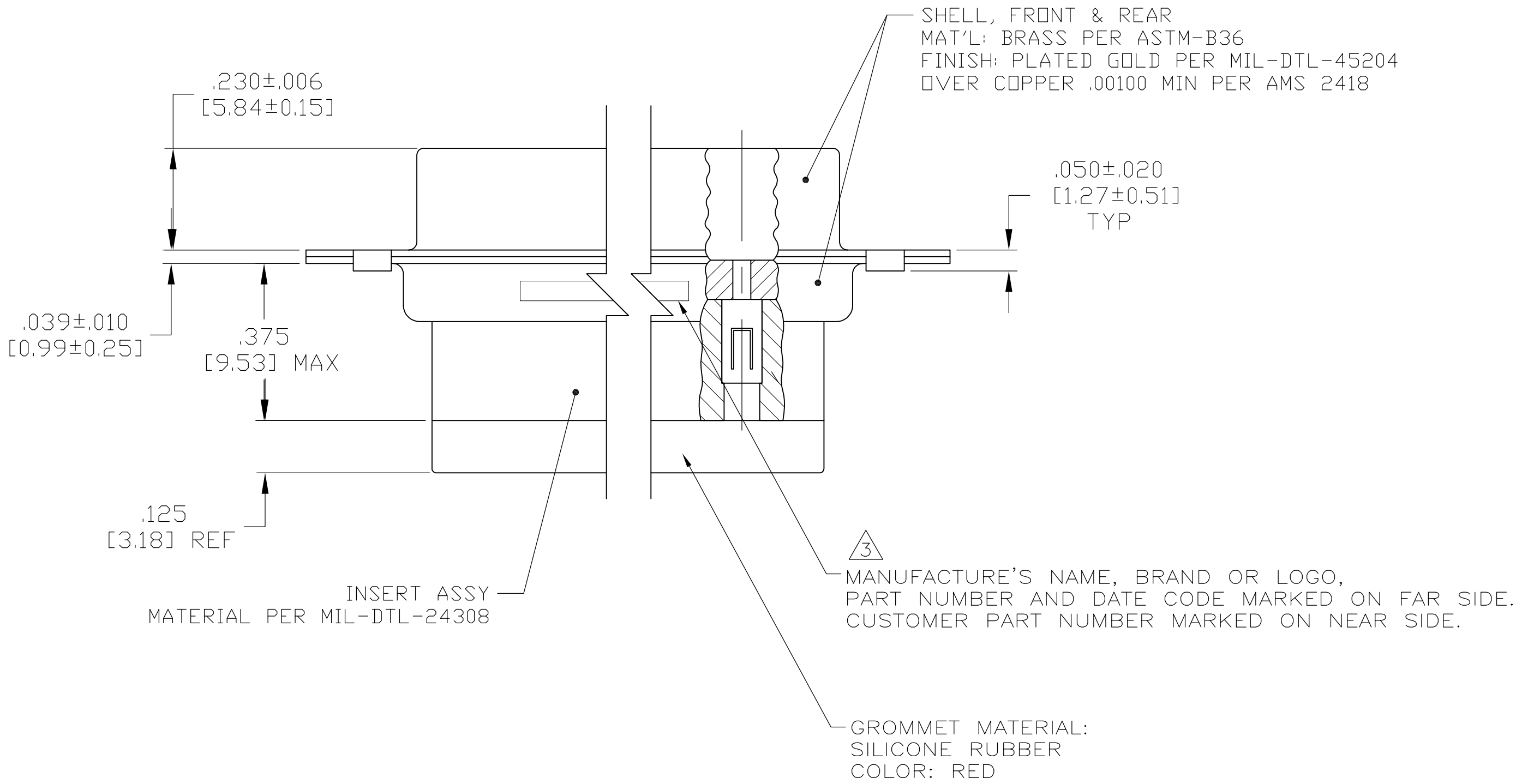





LOC	DIST	REVISIONS				
		P	LTR	DESCRIPTION	DATE	DWN APVD
		H		REV PER ECO 15-005910	5-20-15	CT DM



- THIS CONNECTOR ASSEMBLY IS SUPPLIED WITH Be Cu CONTACT RETENTION CLIPS INSTALLED IN THE INSERT ASSEMBLY.
- THIS CONNECTOR ASSEMBLY MATES WITH ANY PLUG CONNECTOR WITH THE SAME INSERT ARRANGEMENT AND DIMENSIONAL REQUIREMENTS PER MIL-C-24308.
- MARKED WITH .047 [1.19]-.062 [1.57] HIGH CHARACTERS. FAR SIDE REFERS TO THE WIDE SIDE OF THE KEYSTONE. NEAR SIDE REFERS TO THE NARROW SIDE OF THE KEYSTONE.
- MAXIMUM WIRE INSULATION TO BE USED WITH THIS CONNECTOR ASSEMBLY IS .054 [1.37] DIAMETER.
- SPECIAL REQUIREMENTS PER BDEING 1A01 DOCUMENT.
- BUILT TO ORDER, NO INVENTORY OF THIS PART NUMBER IS TO BE KEPT. SINGLE LOT DATE CODE REQUIRED.



<div>5</div> <div>6</div>	1A01-030PHW	1-211642-1
<div>6</div>	A70323-12013-030	211642-8
--	---	211642-4
<div>5</div> <div>6</div>	1A01-030PHA	211642-1
REMARKS	CUSTOMER MARKING	PART NUMBER

THIS DRAWING IS A CONTROLLED DOCUMENT.			DWN C.C.THOMAS 4-9-09	 TE Connectivity		
			CHK R. LEASE 4-9-09			
DIMENSIONS: INCHES		TOLERANCES UNLESS OTHERWISE SPECIFIED:	APVD R. LEASE 4-9-09	NAME		
		0 PLC ± -	PRODUCT SPEC	PLUG ASSY.,AMPLIMITE,50 POSN.,SIZE 5, SERIES 109 WITH GROMMET, NON-MAGNETIC		
		1 PLC ± -				
		2 PLC ± -				
		3 PLC ± -				
		0.005 [0.13]	APPLICATION SPEC	SIZE		
		4 PLC ± -	WEIGHT	DRAWING NO		
		ANGLES ± -				
MATERIAL		FINISH	—	RESTRICTED TO		
SEE CALLOUTS		SEE CALLOUTS		A1 00779 C=211642		
CUSTOMER DRAWING			SCALE	4:1		
			SHEET	1 OF 1		
			REV	H		

Mouser Electronics

Authorized Distributor

Click to View Pricing, Inventory, Delivery & Lifecycle Information:

[TE Connectivity:](#)

[211642-4](#)