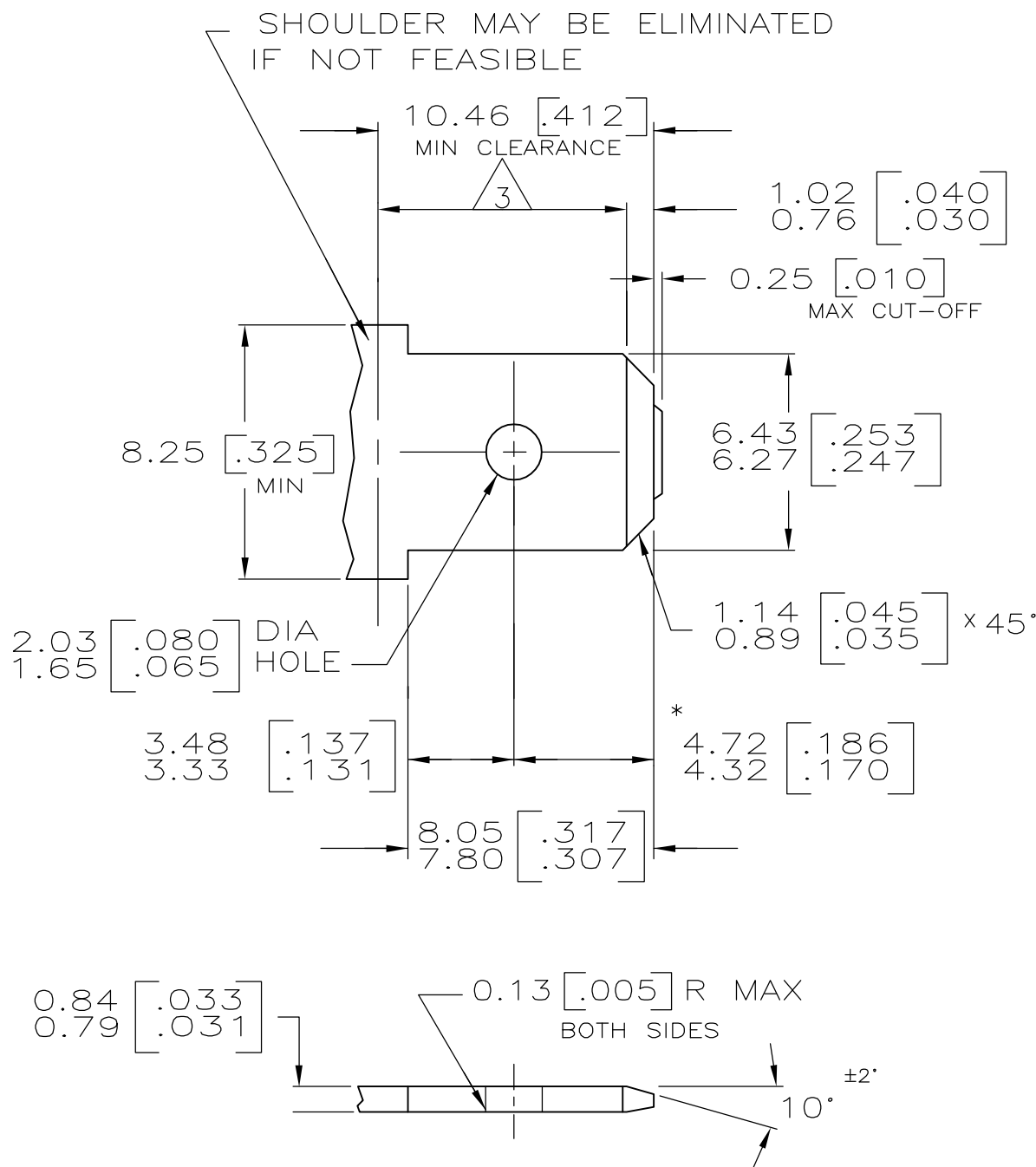
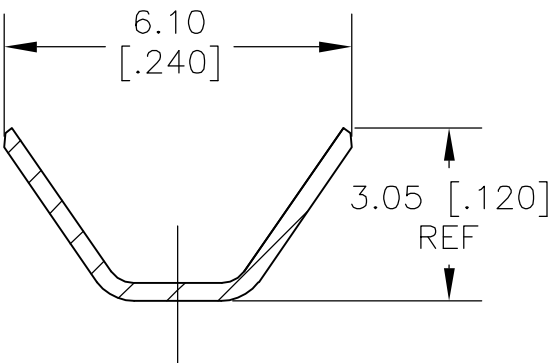
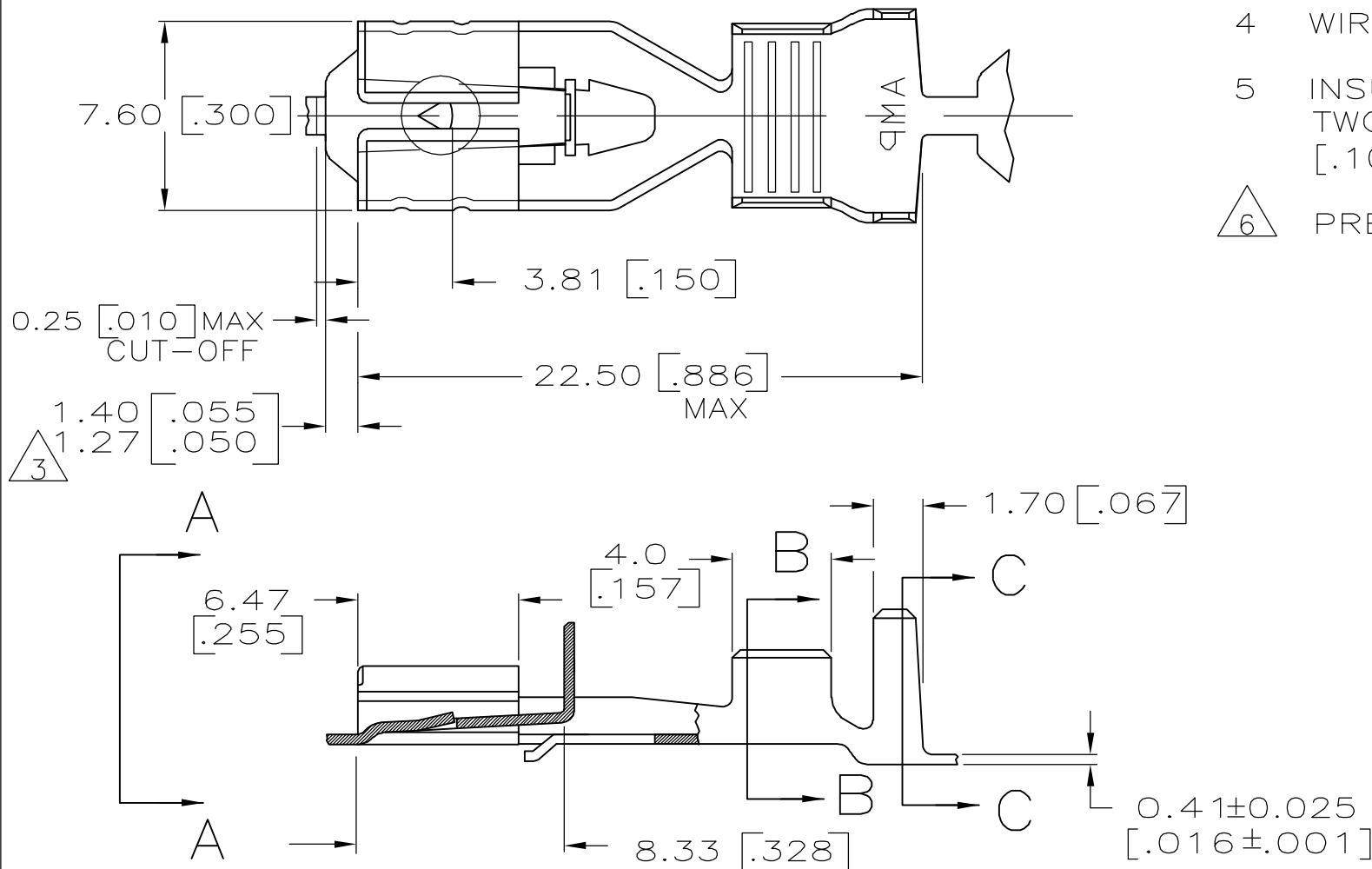


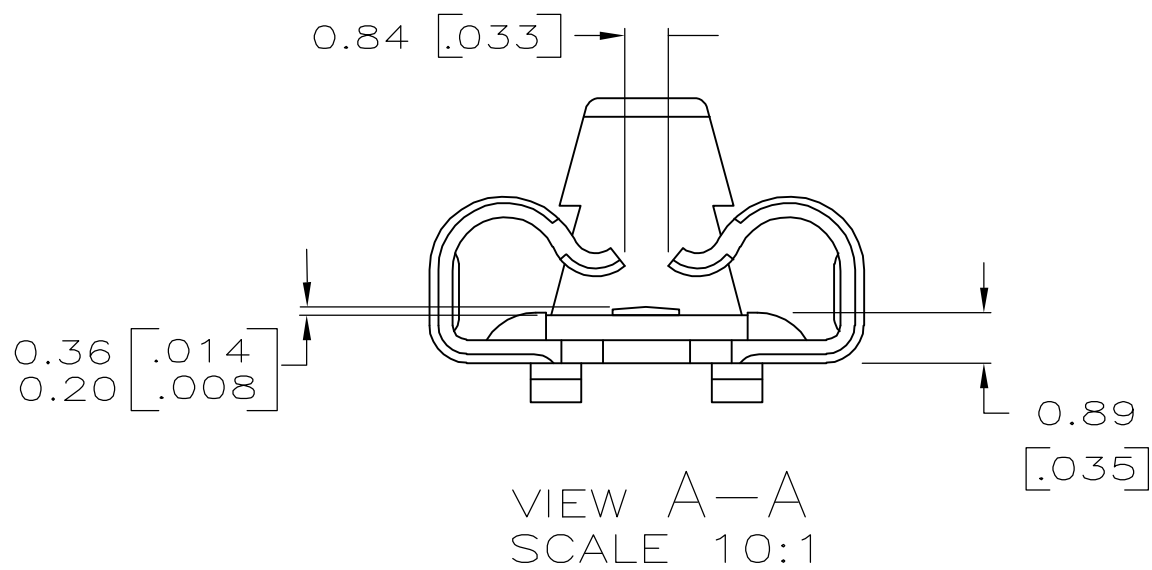
SUGGESTED MATING TAB



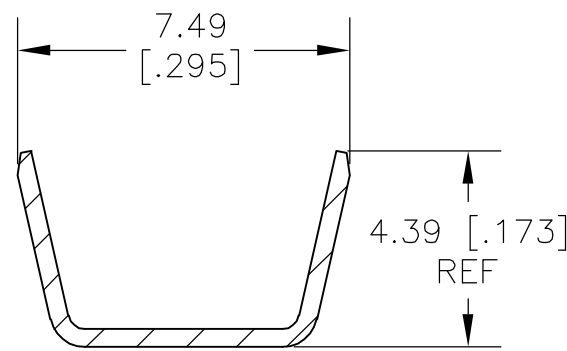
- 1 - MATL: 1/2H BRASS OR NICKEL PL STEEL.
  - 2 - NO BURRS PERMISSIBLE AT HOLE.
  - 3 - MUST BE FLAT WITHIN 0.076 [.003] OVER THIS LENGTH.
  - 4 - TIN PLATING IS REQUIRED ON BRASS WHEN TERMINAL TEMP. IS OVER 225° F
  - 5 - HOLE MUST BE SYMMETRICAL ABOUT TAB Q WITHIN 0.076 [.003]
- \* TO BE USED ONLY WHEN SHOULDER IS ELIMINATED.



SECTION B-B  
SCALE 8:1



VIEW A-A  
SCALE 10:1



SECTION C-C  
SCALE 8:1

- 1 DIMENSIONS IN BRACKETS ARE IN INCHES.
- 2 PRODUCT PROVIDED IN STRIP FORM, BREAKS MAY BE PRESENT.
- 3 THE 1.27-1.40 [.050-.055] DIMENSION MUST BE MAINTAINED BY THE APPLICATOR CUT-OFF TO ENSURE THE PROPER LOCKING FUNCTION OF THE RECEPTACLE.
- 4 WIRE RANGE: #18-#16, TWO #18's, OR TWO #20's AWG.
- 5 INSULATION RANGE: 2.67-5.33mm<sup>2</sup> OR TWO AT 2.67mm<sup>2</sup> MAX. [.105-.210 DIA OR TWO AT .105 MAX DIA].
- 6 PRELIMINARY - NOT FOR PRODUCTION.

TIN 0.002032 [.000080] MIN	1742354-2
-	1742354-1
FINISH	PART NO.

THIS DRAWING IS A CONTROLLED DOCUMENT.		DWN M.S. FEHER 13OCT2005	<b>tyco</b> <i>Electronics</i> Tyco Electronics Corporation Harrisburg, PA 17105-3608			
		CHK E. HOWARD 13OCT2005				
DIMENSIONS: mm [INCHES]	TOLERANCES UNLESS OTHERWISE SPECIFIED:	APVD E. HOWARD 13OCT2005	NAME			
	0 PLC ± - 1 PLC ± - 2 PLC ± 0.25 [.010] 3 PLC ± - 4 PLC ± - ANGLES ± - FINISH	PRODUCT SPEC —	RECEPTACLE, POSITIVE LOCK, .250 SERIES			
		APPLICATION SPEC 114-2074				
		MATERIAL H06 BRASS	SEE TABLE	WEIGHT —	SIZE A2	CAGE CODE 00779
CUSTOMER DRAWING			SCALE 5:1	SHEET 1 of 1	REV A1	

# Mouser Electronics

Authorized Distributor

Click to View Pricing, Inventory, Delivery & Lifecycle Information:

[TE Connectivity:](#)

[1742354-1](#)