
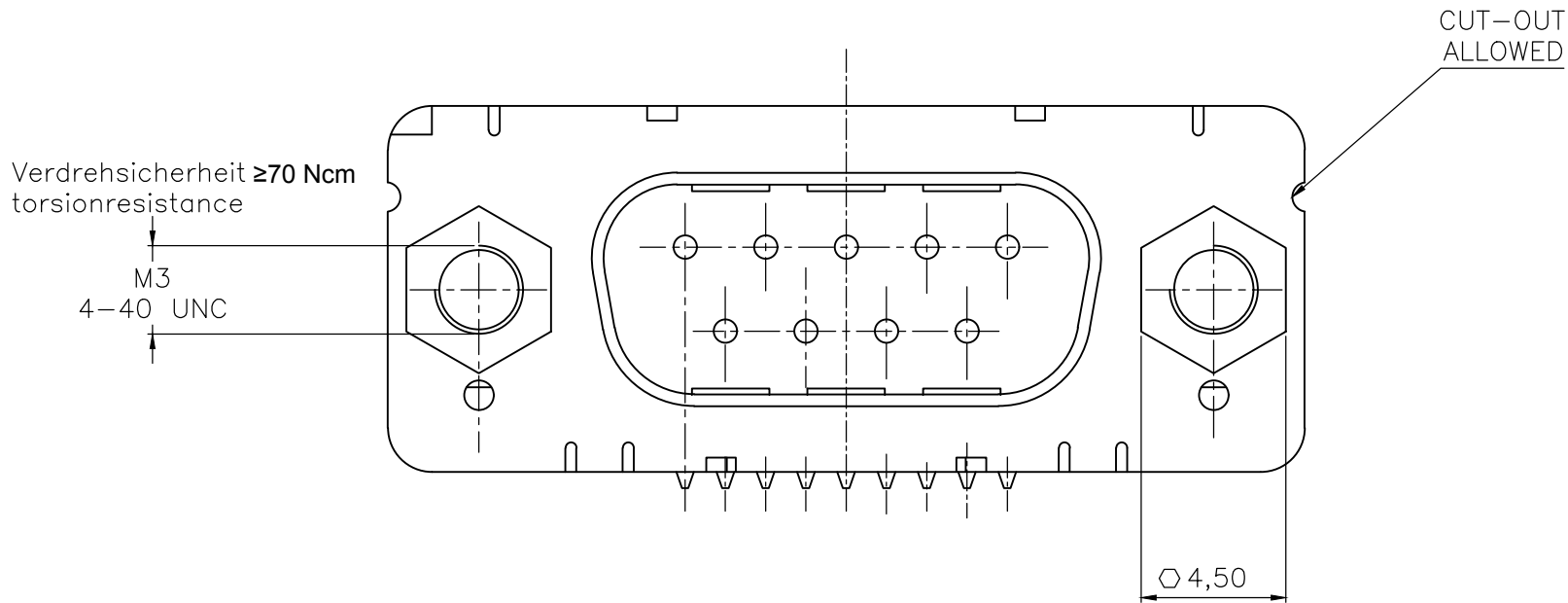


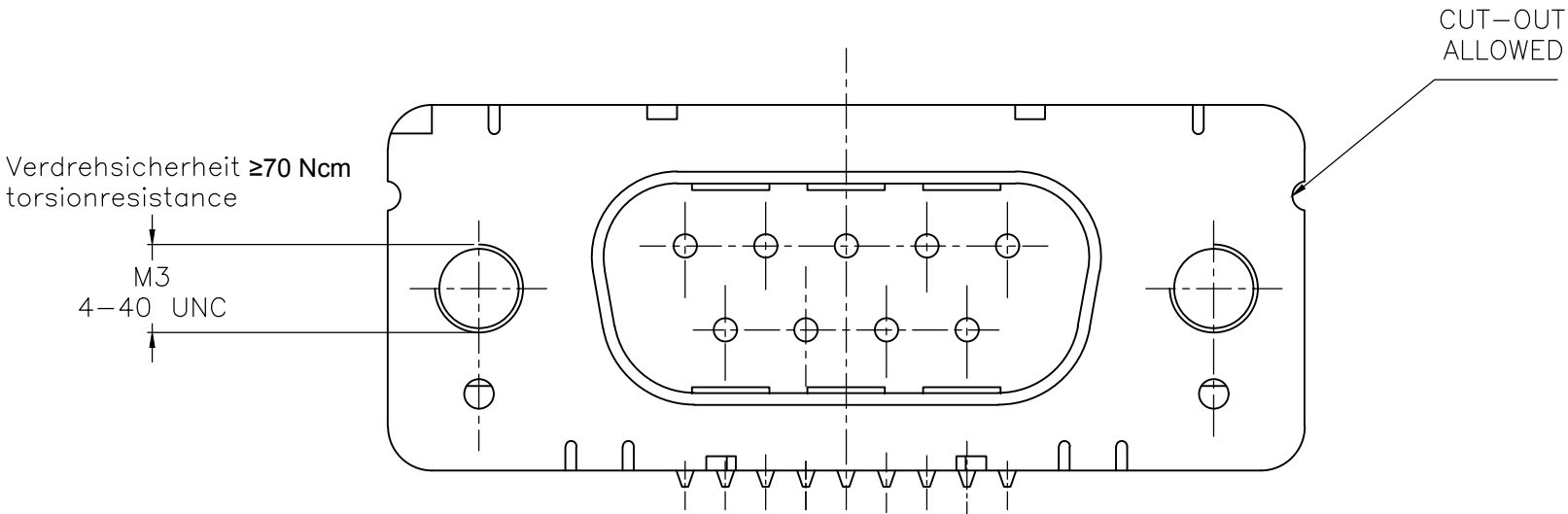
| | | | | | | | |
|---|--|--------------------------------|--|--|--------------------|-----------------------------|--------------------|
| THIS DRAWING IS A CONTROLLED DOCUMENT. DIMENSIONING AND TOLERANCING PER ASME Y14.5M-2009 | | DWN 07JAN10 GNANI JADAV A E | |  TE Connectivity | | | |
| DIMENSIONS: mm | | CHK K.MALCZYK | | | | | |
| TOLERANCES UNLESS OTHERWISE SPECIFIED: | | APVD K.MALCZYK | | NAME Sub-D 90° Löttausführung Stiftleiste Einbauhöhe 3,6 mm D-Sub 90°solder version Pin connector mounting height 3,6 mm | | | |
| 0 PLC ± - 1 PLC ± - 2 PLC ± - 3 PLC ± - 4 PLC ± - ANGLES ± ± - | | PRODUCT SPEC - | | | | | |
| MATERIAL - | | APPLICATION SPEC - | | | | | |
| FINISH - | | WEIGHT 0 | | | | | |
| | | CUSTOMER DRAWING | | SIZE A2 | CAGE CODE 00779 | DRAWING NO C-2-1393480-1 | RESTRICTED TO - |
| | | | | SCALE 2:1 | SHEET 1 of 6 | REV H | |

| REVISIONS | | | | | |
|-----------|-----|-------------|------|-----|------|
| P | LTR | DESCRIPTION | DATE | DWN | APVD |
| - | - | SEE SHEET 1 | - | - | - |

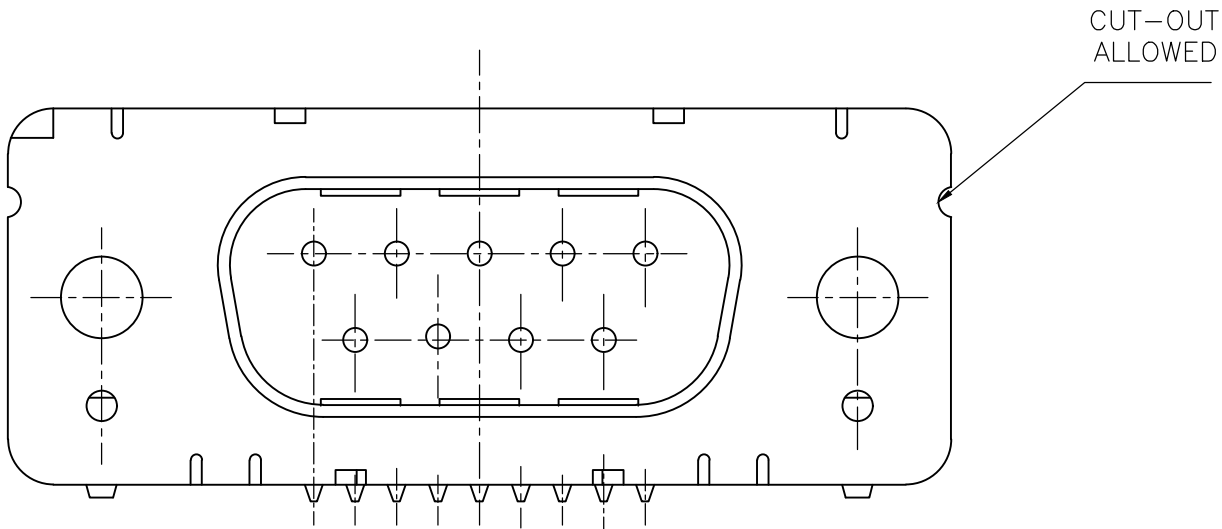
mit Gewindebolzen: M3 V23529-Bxx24-Cxxx-+
with thread lock 4-40 UNC V23529-Bxx25-Cxxx-+



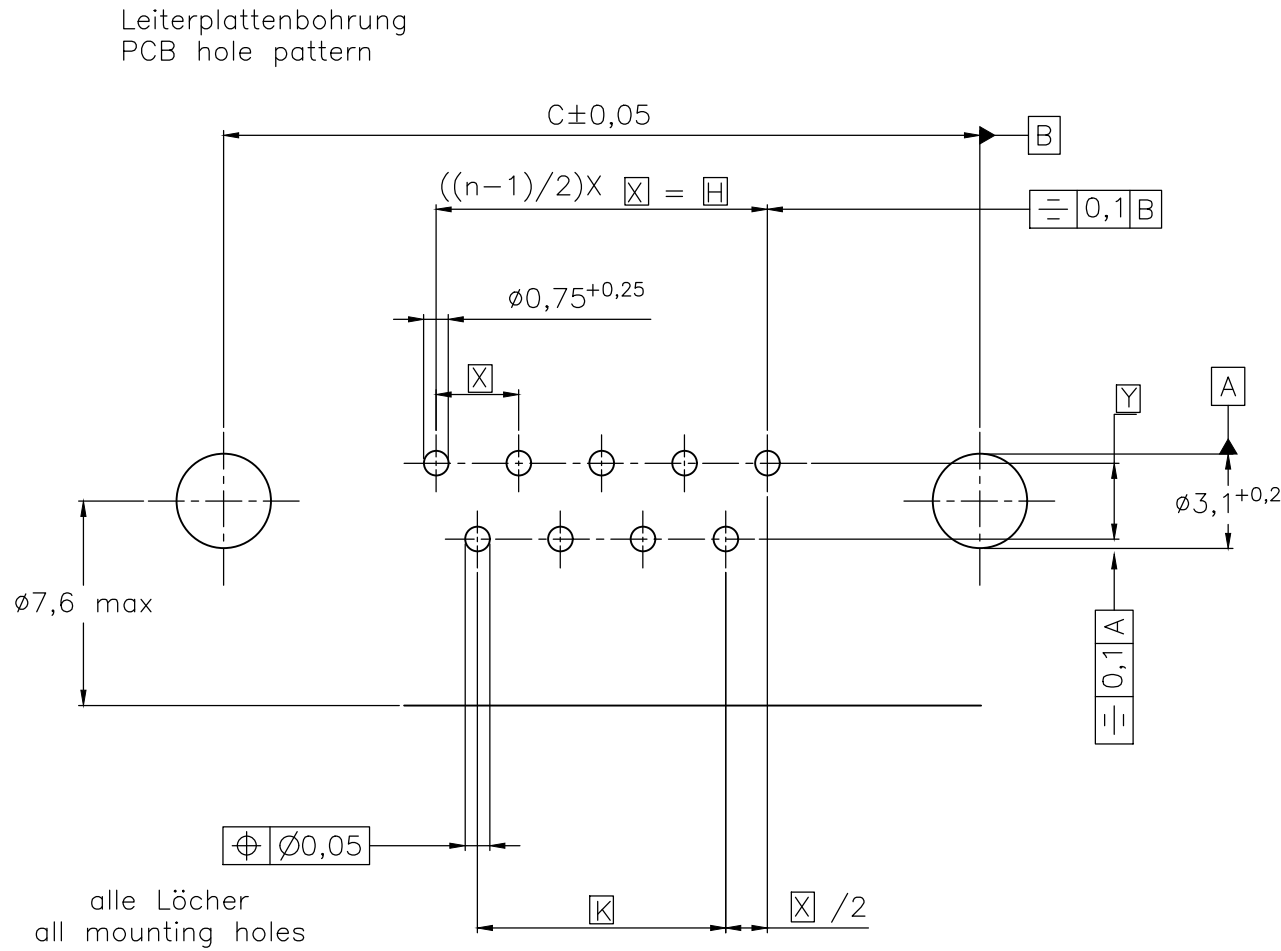
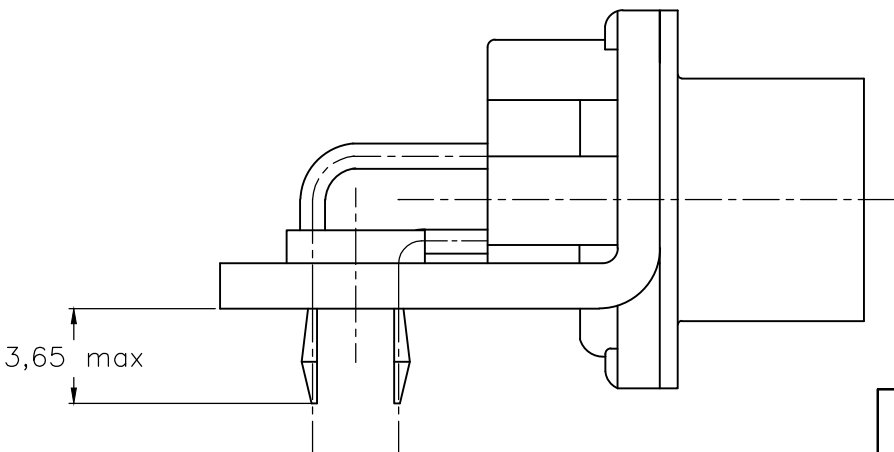
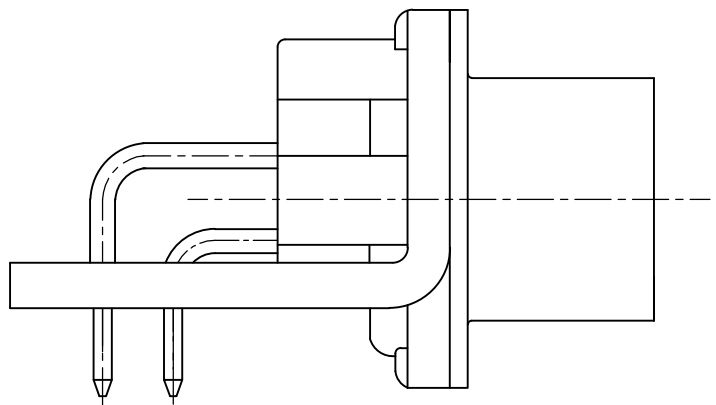
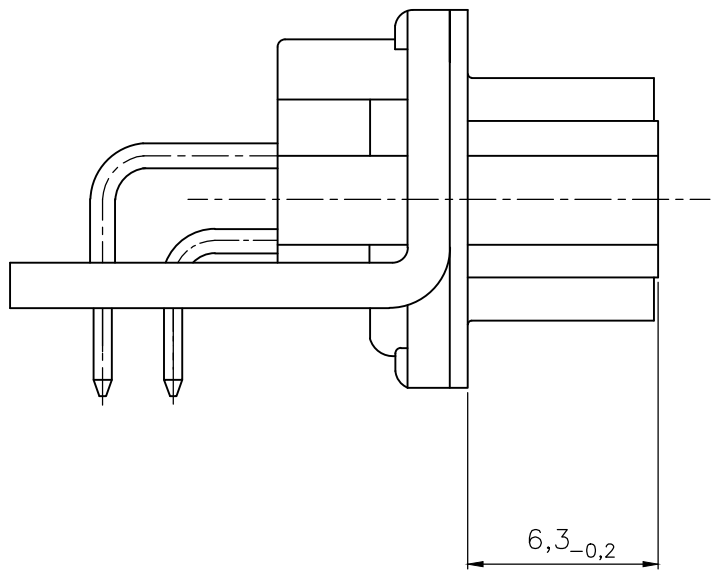
mit Gewinde: M3 V23529-Bxx22-Cxxx-+
with thread 4-40 UNC V23529-Bxx23-Cxxx-+



mit Clipbefestigung: V23529-Bx22x-Cxxx-+
with snap-in




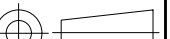
LP-Dicke 1,6±0,13mm, Loch $\varnothing 3,1^{+0,2}$
PC-board-thickness 1,6±0,13mm, Hole $\varnothing 3,1^{+0,2}$



| Mass Dimension | Polzahl n Number of contacts n | | | |
|-------------------|-----------------------------------|-------|-------|-------|
| | 9 | 15 | 25 | 37 |
| C | 25 | 33,3 | 47,04 | 63,5 |
| H | 10,96 | 19,18 | 33,12 | 49,68 |
| K | 8,22 | 16,44 | 30,36 | 46,92 |
| X | 2,74 | 2,74 | 2,76 | 2,76 |
| Y | 2,54 | | | |

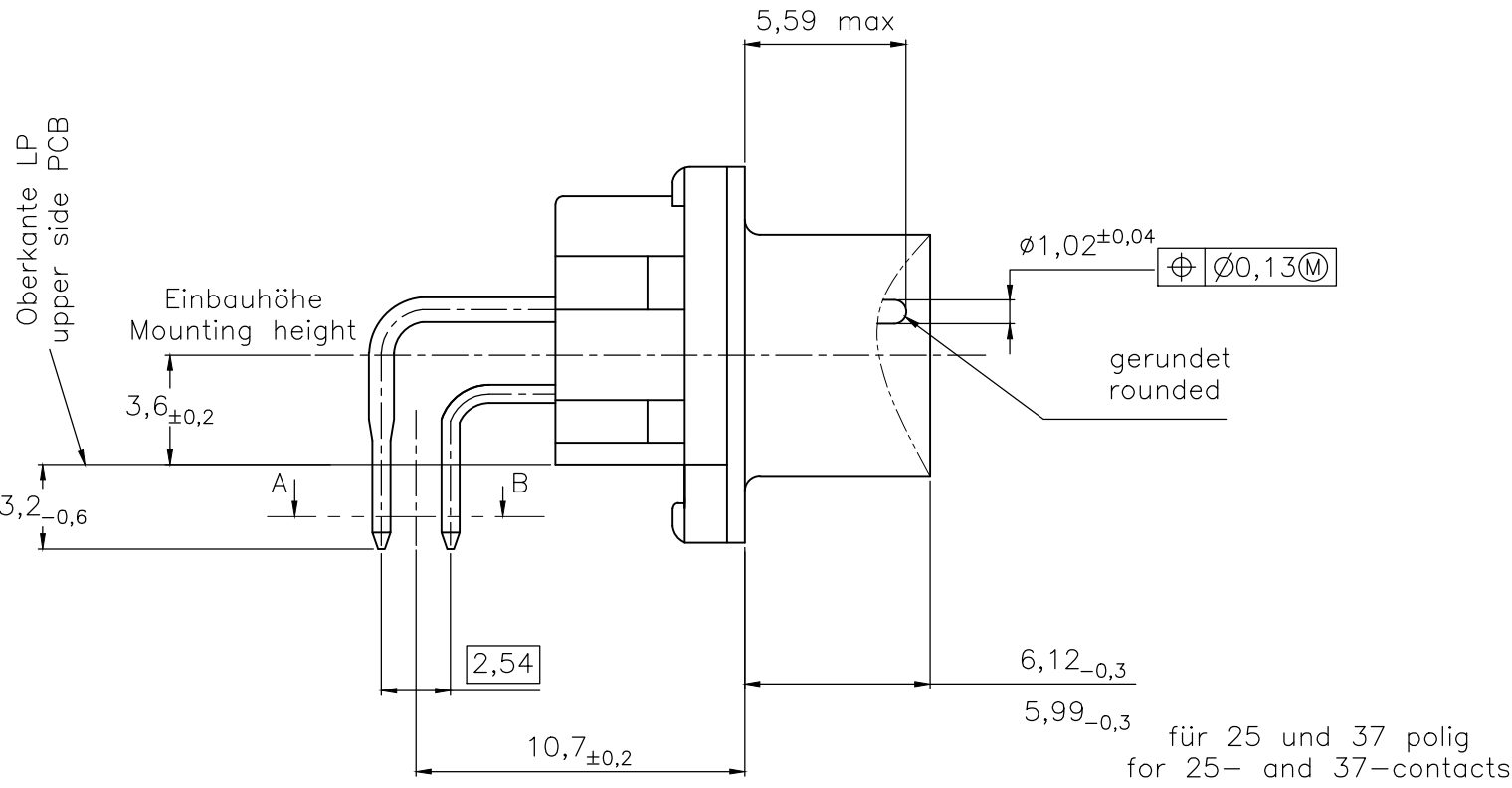
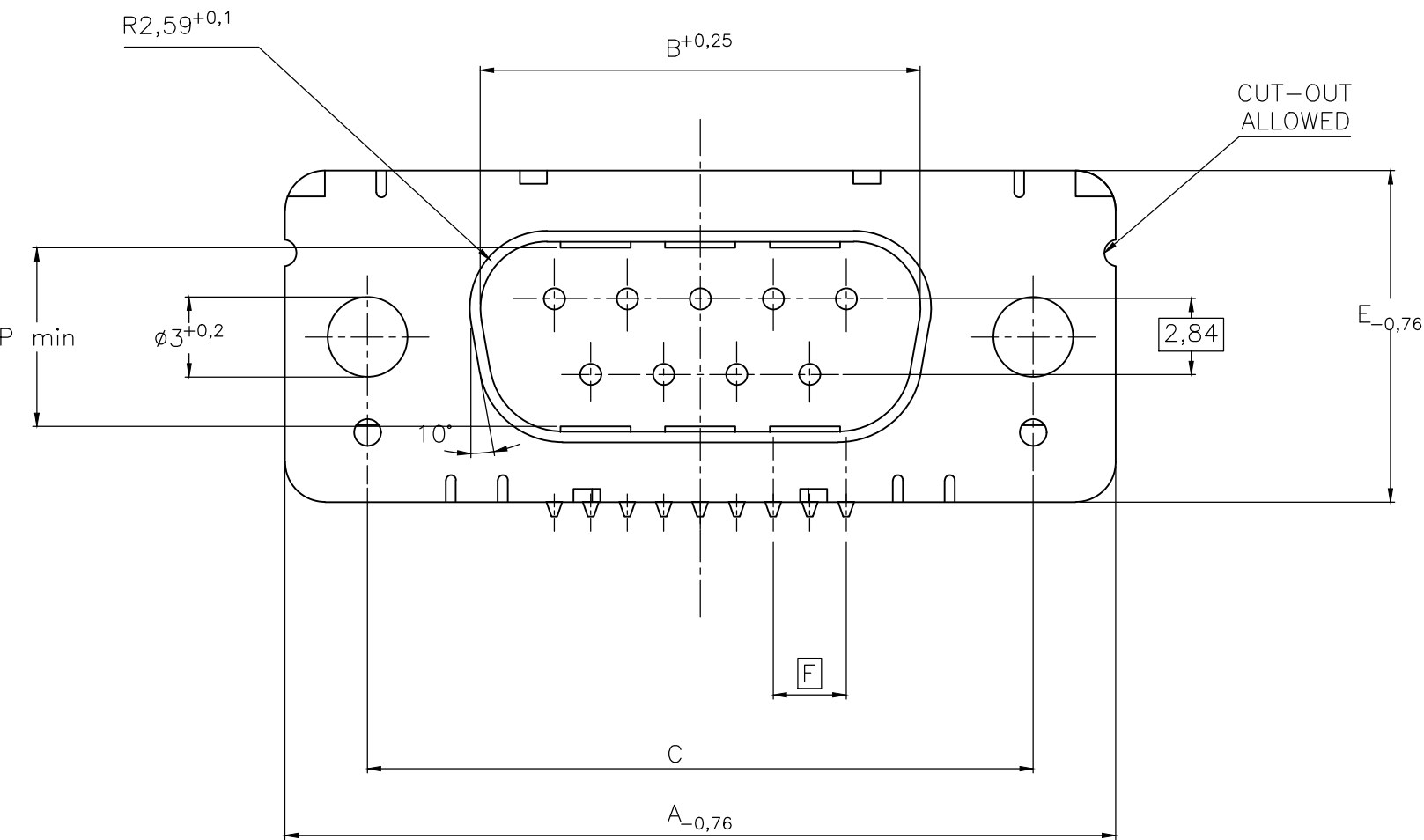
1) nach DIN 41652 T,2 UND T,4
according to DIN 41652 p,2 AND p,4

OLD PN: V23529-B*****-C***-*-7427

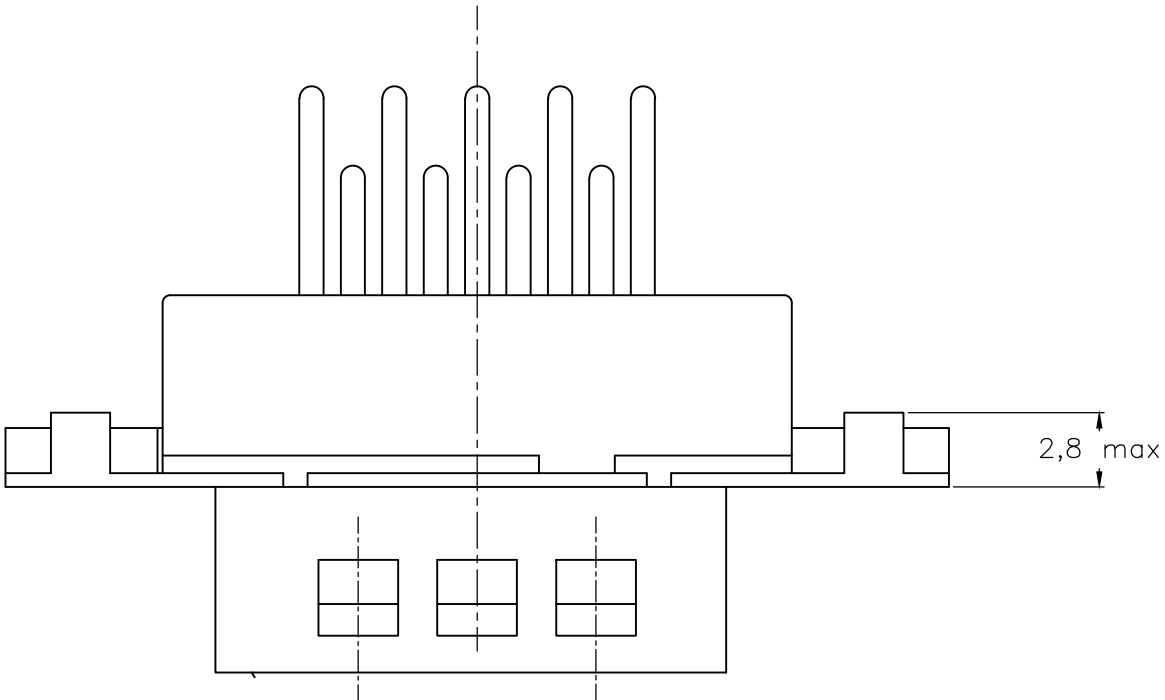
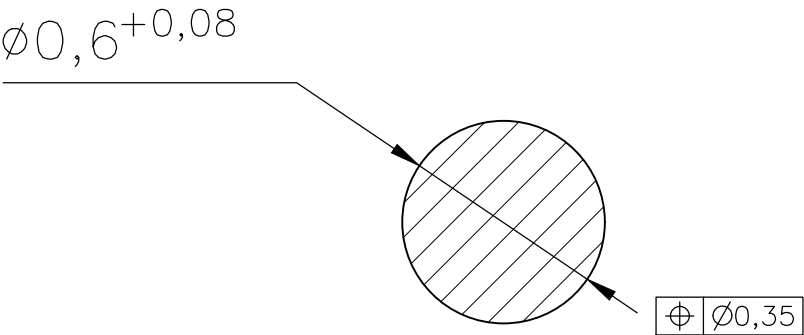
| | | | | | | | | | | | | | | | | | | | | | | | |
|---|---|--|--|---|---|---|-------|---|---|-------|---|---|-------|---|---|-------|---|---|--------|---|---|---|--|
| THIS DRAWING IS A CONTROLLED DOCUMENT. DIMENSIONING AND TOLERANCING PER ASME Y14.5M-2009 | | DWN GNANI JADAV A E 07JAN10 | |  TE Connectivity | | | | | | | | | | | | | | | | | | | |
| DIMENSIONS: mm | | TOLERANCES UNLESS OTHERWISE SPECIFIED: <table><tr><td>0 PLC</td><td>±</td><td>-</td></tr><tr><td>1 PLC</td><td>±</td><td>-</td></tr><tr><td>2 PLC</td><td>±</td><td>-</td></tr><tr><td>3 PLC</td><td>±</td><td>-</td></tr><tr><td>4 PLC</td><td>±</td><td>-</td></tr><tr><td>ANGLES</td><td>±</td><td>-</td></tr></table> | | 0 PLC | ± | - | 1 PLC | ± | - | 2 PLC | ± | - | 3 PLC | ± | - | 4 PLC | ± | - | ANGLES | ± | - | NAME Sub-D 90° Löt ausführung Stiftleiste Einbauhöhe 3,6 mm D-Sub 90° solder version Pin connector mounting height 3,6 mm | |
| 0 PLC | ± | - | | | | | | | | | | | | | | | | | | | | | |
| 1 PLC | ± | - | | | | | | | | | | | | | | | | | | | | | |
| 2 PLC | ± | - | | | | | | | | | | | | | | | | | | | | | |
| 3 PLC | ± | - | | | | | | | | | | | | | | | | | | | | | |
| 4 PLC | ± | - | | | | | | | | | | | | | | | | | | | | | |
| ANGLES | ± | - | | | | | | | | | | | | | | | | | | | | | |
|  | | CHK K.MALCZYK | | APVD K.MALCZYK | | | | | | | | | | | | | | | | | | | |
| MATERIAL - | | PRODUCT SPEC - | | RESTRICTED TO - | | | | | | | | | | | | | | | | | | | |
| | | APPLICATION SPEC - | | SIZE A2 | | | | | | | | | | | | | | | | | | | |
| | | WEIGHT - | | CAGE CODE 00779 | | | | | | | | | | | | | | | | | | | |
| FINISH - | | CUSTOMER DRAWING | | DRAWING NO C=2-1393480-1 | | | | | | | | | | | | | | | | | | | |
| | | | | SCALE 2:1 | | | | | | | | | | | | | | | | | | | |
| | | | | SHEET 2 of 6 | | | | | | | | | | | | | | | | | | | |
| | | | | REV H | | | | | | | | | | | | | | | | | | | |

| REVISIONS | | | | | |
|-----------|-----|-------------|------|-----|------|
| P | LTR | DESCRIPTION | DATE | DWN | APVD |
| - | - | SEE SHEET 1 | - | - | - |

Standardausführung ohne Winkel: V23529-B50x1-Cxxx-+
Standardversion without bracket



Schnitt AB des Lötanschlusses
Cross-section AB of solderpin
(20:1)



| Ordercode Sachnr | Contacts Polzahl | Mass/Dimension | | | | | | | | |
|---------------------|---------------------|----------------|-------|---|------|-------|------|------|----|------|
| | | A | B | C | D | E | F | M | N | P |
| ..-Cx09-+ | 09 | 31,19 | 16,79 | 25,0 ^{+0,12} _{-0,13} | 8,23 | 12,93 | 2,74 | 7,6 | 2 | 7,72 |
| ..-Cx15-+ | 15 | 39,52 | 25,12 | 33,3 ^{+0,15} _{-0,1} | 8,23 | 12,93 | 2,74 | 15,2 | 4 | 7,69 |
| ..-Cx25-+ | 25 | 53,42 | 38,84 | 47,04 ^{+0,13} _{-0,13} | 8,23 | 12,93 | 2,76 | 26,6 | 7 | 7,65 |
| ..-Cx37-+ | 37 | 69,7 | 55,30 | 63,5 ^{+0,13} _{-0,13} | 8,23 | 12,93 | 2,76 | 41,8 | 11 | 7,65 |

Anforderungsstufe/Performance level 1)
OLD PN: V23529-B****-C***-*7427

1) nach DIN 41652 T.2 und T.4
according to DIN 41652 T.2 and T.4

THIS DRAWING IS A CONTROLLED DOCUMENT.
DIMENSIONING AND TOLERANCING PER ASME Y14.5M-2009

DIMENSIONS:
mm

TOLERANCES UNLESS OTHERWISE SPECIFIED:

0 PLC ± -
1 PLC ± -
2 PLC ± -
3 PLC ± -
4 PLC ± -
ANGLES ± -

MATERIAL

-

FINISH

-

DWN
GNANI JADAV A E

CHK
K.MALCZYK

APVD
K.MALCZYK

PRODUCT SPEC
-

APPLICATION SPEC
-

WEIGHT
-

CUSTOMER DRAWING

07JAN10

-

-

-

-

-

SCALE
2:1

SHEET
3 of 6

REV
H

TE Connectivity

NAME
Sub-D 90° Lötanschluss Stiftleiste
Einbauhöhe 3,6 mm
D-Sub 90°solder version Pin connector
mounting height 3,6 mm


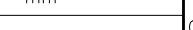
SIZE
A2

CAGE CODE
00779

DRAWING NO
C=2-1393480-1

RESTRICTED TO
-

1471-9 (1/15)

| | | | | | | | | | | | |
|---|--|---|--|------------------|--|---|--|---------------|--|-----|--|
| THIS DRAWING IS A CONTROLLED DOCUMENT. DIMENSIONING AND TOLERANCING PER ASME Y14.5M-2009 | | DWN GNANI JADAV A E | | 07JAN10 | |  TE Connectivity | | | | | |
| DIMENSIONS: mm | | TOLERANCES UNLESS OTHERWISE SPECIFIED: | | CHK K.MALCZYK | | | | NAME | | | |
|  | | APVD K.MALCZYK | | PRODUCT SPEC | | Sub-D 90° Lötanschluss Stifteleiste Einbauhöhe 3,6 mm D-Sub 90° solder version Pinconnector mounting height 3,6 mm | | | | | |
| | | APPLICATION SPEC | | SIZE | | RESTRICTED TO | | | | | |
| | | WEIGHT | | CAGE CODE | | DRAWING NO | | | | | |
| | | MATERIAL | | FINISH | | SCALE | | SHEET | | | |
| - | | - | | A2 | | 00779 | | C=2-1393480-1 | | REV | |
| CUSTOMER DRAWING | | SCALE | | SHEET | | REV | | H | | | |

D

C

B

A

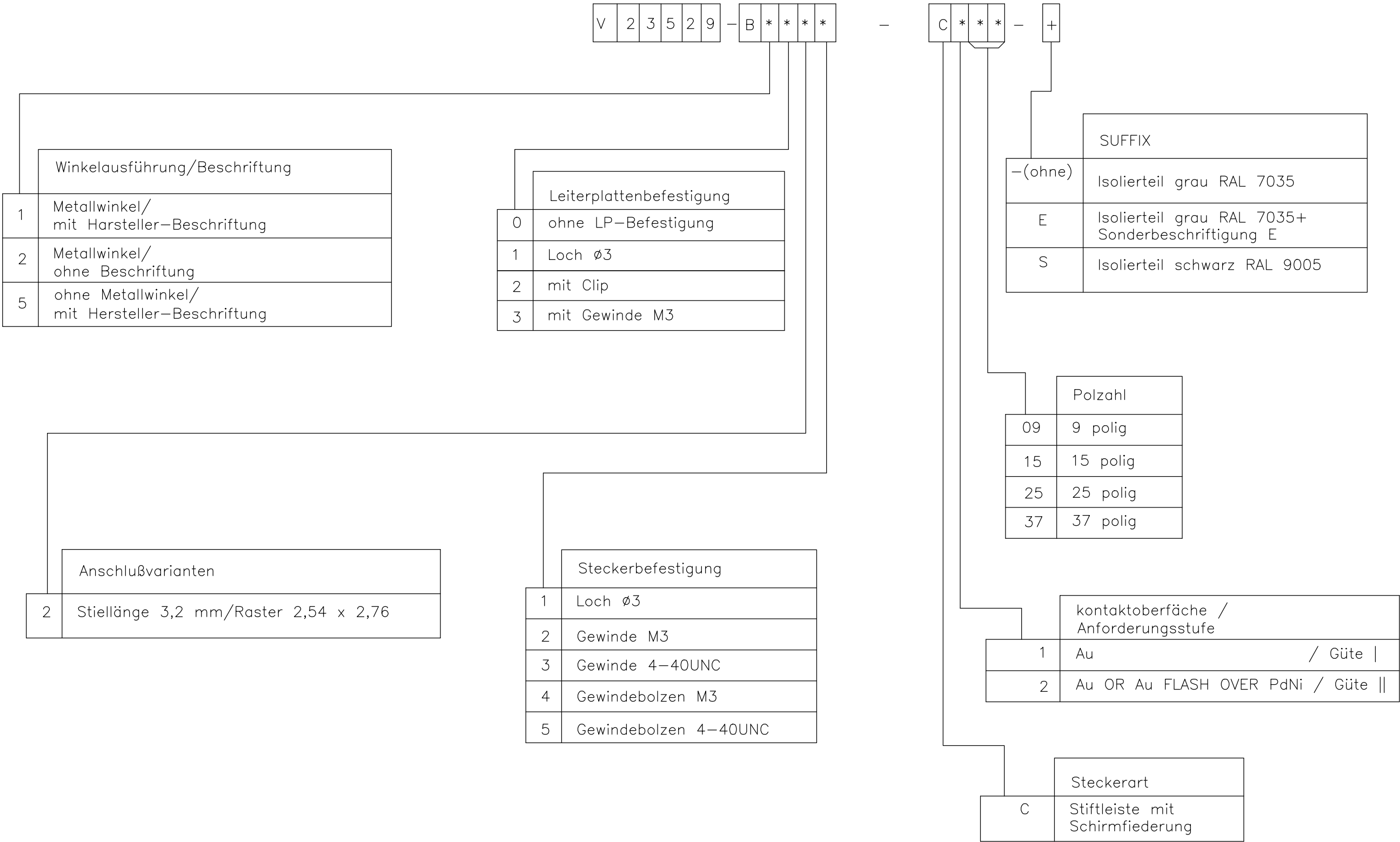
D

C

B

A

| REVISIONS | | | | | |
|-----------|-----|-------------|------|-----|------|
| P | LTR | DESCRIPTION | DATE | DWN | APVD |
| | — | SEE SHEET 1 | — | — | — |



Winkelausführung/Beschriftung

1

Metallwinkel/
mit Hersteller-Beschriftung

2

Metallwinkel/
ohne Beschriftung

5

ohne Metallwinkel/
mit Hersteller-Beschriftung

Leiterplattenbefestigung

0

ohne LP-Befestigung

1

Loch Ø3

2

mit Clip

3

mit Gewinde M3

Steckerbefestigung

1

Loch Ø3

2

Gewinde M3

3

Gewinde 4-40UNC

4

Gewindebolzen M3

5

Gewindebolzen 4-40UNC

Anschlußvarianten

2

Stiellänge 3,2 mm/Raster 2,54 x 2,76

SUFFIX

—(ohne)

Isolierteil grau RAL 7035

E

Isolierteil grau RAL 7035+
Sonderbeschriftung E

S

Isolierteil schwarz RAL 9005

Polzahl

09

9 polig

15

15 polig

25

25 polig

37

37 polig

kontaktoberfläche /
Anforderungsstufe

1

Au / Güte I

2

Au OR Au FLASH OVER PdNi / Güte II

Steckerart

C

Stiftleiste mit
Schirmfiederung

1) nach DIN 41652 T.2 und T.4
according to DIN 41652 p.2 and p.4

OLD PN: V23529-B****-C***-*—7427

| | | | | | |
|---|--|------------------------|--------------|---|--------------------|
| THIS DRAWING IS A CONTROLLED DOCUMENT. DIMENSIONING AND TOLERANCING PER ASME Y14.5M-2009 | | DWN GNANI JADAV A E | 07JAN10 |  TE Connectivity | |
| DIMENSIONS: mm | | CHK K.MALCZYK | — | | |
|  | | APVD K.MALCZYK | — | NAME Sub-D 90° Löt Ausführung Stiftleiste Einbauhöhe 3,6 mm D-Sub 90° solder version Pin connector mounting height 3,6 mm | |
| | | PRODUCT SPEC — | — | | |
| TOLERANCES UNLESS OTHERWISE SPECIFIED: 0 PLC ± — 1 PLC ± — 2 PLC ± — 3 PLC ± — 4 PLC ± — ANGLES ± — | | APPLICATION SPEC — | — | SIZE A2 | CAGE CODE 00779 |
| MATERIAL — | | WEIGHT — | — | DRAWING NO C=2-1393480-1 | RESTRICTED TO — |
| CUSTOMER DRAWING | | | SCALE 2:1 | SHEET 5 of 6 | REV H |

1471-9 (1/15)

2-1393480-1

| REVISIONS | | | | | |
|-----------|-----|-------------|------|-----|------|
| P | LTR | DESCRIPTION | DATE | DWN | APVD |
| | - | SEE SHEET 1 | - | - | - |

D

D

C

C

B

B

A

A

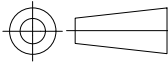
Active part numbers. Contact TE CONNECTIVITY for other configuration availability

| Old Part Number | TE CONNECTIVITY Part Number | |
|-------------------|-----------------------------|----------|
| V23529-B1121-C209 | 2-1393480-1 | |
| V23529-B1121-C215 | 2-1393480-2 | |
| V23529-B1121-C225 | 2-1393480-3 | |
| V23529-B1121-C237 | 2-1393480-4 | |
| V23529-B1122-C209 | 3-1393480-2 | |
| V23529-B1122-C215 | 3-1393480-3 | |
| V23529-B1122-C225 | 2-1392010-8 | |
| V23529-B1122-C237 | 3-1392010-6 | |
| V23529-B1123-C209 | 4-1393480-0 | |
| V23529-B1123-C215 | 4-1393480-1 | |
| V23529-B1123-C225 | 4-1393480-2 | |
| V23529-B1123-C237 | 4-1393480-3 | |
| V23529-B1125-C125 | 5-1393480-1 | OBSOLETE |
| V23529-B1125-C209 | 5-1393480-2 | OBSOLETE |
| V23529-B1125-C215 | 5-1393480-3 | OBSOLETE |
| V23529-B1125-C225 | 5-1393480-4 | OBSOLETE |
| V23529-B1125-C237 | 3-1392010-5 | OBSOLETE |
| V23529-B1221-C109 | 5-1393480-8 | |
| V23529-B1221-C209 | 5-1393480-9 | |

| Old Part Number | TE CONNECTIVITY Part Number | | |
|-------------------|-----------------------------|-----------|----------|
| V23529-B1221-C215 | 6-1393480-0 | | |
| V23529-B1222-C209 | 7-1393480-4 | OBSOLETE | |
| V23529-B1222-C215 | 7-1393480-5 | OBSOLETE | |
| V23529-B1222-C225 | 7-1393480-6 | OBSOLETE | |
| V23529-B1222-C237 | 7-1393480-7 | OBSOLETE | |
| V23529-B1223-C209 | 8-1393480-5 | | |
| V23529-B1223-C215 | 8-1393480-6 | | |
| V23529-B1223-C225 | 8-1393480-7 | | |
| V23529-B1223-C237 | 8-1393480-8 | | |
| V23529-B1224-C209 | 9-1393480-4 | | |
| V23529-B1224-C215 | 9-1393480-5 | | |
| V23529-B1224-C225 | 9-1393480-6 | | |
| V23529-B1225-C109 | 1393481-4 | | |
| V23529-B1225-C209 | 1393481-5 | | |
| V23529-B1225-C215 | 3-1392010-3 | | |
| V23529-B1225-C225 | 1393481-6 | 2173194-1 | OBSOLETE |
| V23529-B1225-C237 | 3-1392010-4 | | |
| V23529-B2121-C209 | 1-1393481-0 | | |
| V23529-B2221-C209 | 1-1393481-2 | | |

1) nach DIN 41652 T.2 und T.4
according to DIN 41652 p.2 and p.4

OLD PN: V23529-B****-C****-*-7427

| | | | | | | | |
|---|--|--------------------------------|--|--|-----------------|--------------------------|-----------------|
| THIS DRAWING IS A CONTROLLED DOCUMENT. DIMENSIONING AND TOLERANCING PER ASME Y14.5M-2009 | | DWN 07JAN10 GNANI JADAV A E | | TE Connectivity | | | |
| DIMENSIONS: mm | | CHK K.MALCZYK | | NAME | | | |
|  | | APVD K.MALCZYK | | Sub-D 90° Lötanschluss Stifteleiste Einbauhöhe 3,6 mm D-Sub 90° solder version Pin connector mounting height 3,6 mm | | | |
| | | PRODUCT SPEC | | | | | |
| | | APPLICATION SPEC | | | | | |
| MATERIAL - | | WEIGHT - | | SIZE A2 | CAGE CODE 00779 | DRAWING NO C=2-1393480-1 | RESTRICTED TO - |
| FINISH - | | CUSTOMER DRAWING | | SCALE 2:1 | | SHEET 6 of 6 | REV H |

2-1393480-1

Mouser Electronics

Authorized Distributor

Click to View Pricing, Inventory, Delivery & Lifecycle Information:

[TE Connectivity:](#)

[8-1393480-6](#)