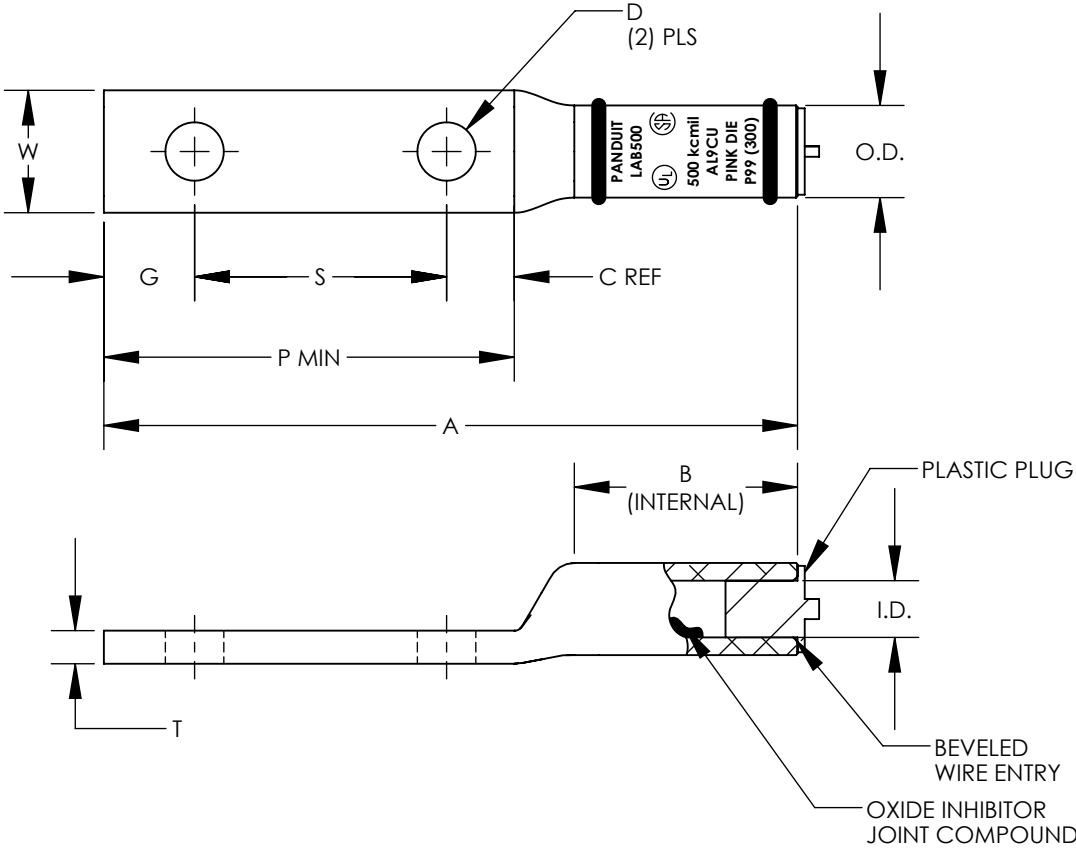


PANDUIT PART NUMBER	CONDUCTOR SIZE	STUD SIZE	OVERALL LENGTH "A" +/- .12	BARREL LENGTH "B" MIN	BARREL		TONGUE WIDTH "W" +/- .060	TONGUE THICKNESS "T" +/- .020	TONGUE LENGTH "P" MIN	HOLE OFFSET "G" +/- .031	STUD HOLE DIA "D" +/- .02	HOLE SPACING "S" +/- .04	WRENCH CLEARANCE "C" REF	WIRE STRIP LENGTH	PANDUIT DIE COLOR CODE PANDUIT DIE INDEX NUMBER (BURNDY DIE INDEX NUMBER)
					I.D. +/- .010	O.D. +/- .010									
LAB300-12-2	300 kcmil	1/2"	6.56	2.25	0.65	1.10	1.38	0.34	3.56	0.63	0.53	1.75	1.18	2-5/16"	BLUE DIE P76 (470)
LAB350-12-2R	350 kcmil	1/2"	6.56	2.31	0.72	1.11	1.52	0.38	3.56	0.63	0.53	1.75	1.18	2-5/16"	BROWN DIE P87 (299)
LAB400-12-2	400 kcmil	1/2"	6.94	2.50	0.76	1.19	1.66	0.39	3.56	0.63	0.53	1.75	1.18	2-9/16"	GREEN DIE P94 (472)
LAB500-12-2R	500 kcmil	1/2"	7.31	3.00	0.84	1.32	1.74	0.45	3.56	0.63	0.53	1.75	1.18	3-1/16"	PINK DIE P99 (300)
LAB600-12-2	600 kcmil	1/2"	7.56	3.00	0.92	1.44	1.73	0.50	3.63	0.63	0.53	1.75	1.25	3-1/16"	BLACK DIE P106 (473)
LAB750-12-1R	750 kcmil	1/2"	8.25	3.44	1.03	1.59	1.74	0.54	3.63	0.63	0.53	1.75	1.25	3-7/16"	RED DIE P125 (301)
LAB800-12-1	800 kcmil	1/2"	8.31	3.38	1.06	1.66	1.75	0.59	3.63	0.63	0.53	1.75	1.25	3-7/16"	GRAY DIE P140 (474)
LAB1000-12-1	1000 kcmil	1/2"	9.73	4.50	1.19	1.84	2.56	0.63	3.63	0.63	0.53	1.75	1.25	4-3/4"	BROWN DIE P161 (302)

NOTES:

1. MATERIAL: SEAMLESS ALUMINUM TUBING, TIN PLATED
2. BARREL COLOR CODED WITH DIE SET INDEX NUMBER
3. FOR STRANDED ALUMINUM AND COPPER WIRE
4. UL LISTED & CSA CERTIFIED TEMPERATURE RATED 90° C (AL9CU)
5. UL LISTED & CSA CERTIFIED VOLTAGE RATING 35 KV
6. ALL DIMENSIONS IN INCHES



08	12/15	JHNU	JHNU	RGB	REVISED W DIM FOR LAB300: 1.38 WAS 1.34 REVISED P DIM FOR LAB350: 3.56 WAS 3.11 REVISED P DIM FOR LAB500: 3.56 WAS 3.15 REVISED P DIM FOR LAB750: 3.63 WAS 3.12	N41152BA-C41152
07	8/15	JHNU	JHNU	RGB	ADDED "D" DIMENSION	N41152BA-C41152
06	3/15	JHNU	JHNU	RGB	REVISED A DIM: LAB350-12-2R WAS 6.07, LAB500-12-2R WAS 6.80 LAB750-12-1R WAS 7.31 REVISED W DIM: LAB500-12-2R WAS 1.62, LAB750-12-1R WAS 1.69 REVISED T DIM: LAB350-12-2R WAS .39, LAB500-12-2R WAS .46 LAB750-12-1R WAS .57 REVISED C DIM: LAB350-12-2R WAS .73, LAB500-12-2R WAS .77, LAB750-12-1R WAS .74	N41152BA-C41152
05	3/15	JHNU	JHNU	RGB	REVISED DIMENSIONS, REVISED NOTES ADDED BARREL MARKING ADDED COLOR CODE/DIE INDEX NUMBER REMOVED LAB350-12-X, LAB500-12-2, LAB750-12-1 ADDED LAB350-12-XR, LAB500-12-2R, LAB750-12-1R	N41152BA-C41152
04	3/13	JHNU	JHNU	RGB	REVISED TITLE BLOCK CONVERTED TO SOLIDWOKRS	N41152BA-C41152
REV	DATE	BY	CHK	APR	DESCRIPTION	ECN

TITLE

LAB SERIES 300kcmil - 1000 kcmil ALUMINUM LUGS  
CUSTOMER DRAWING

ITEM REVISION NAME

N41152BA-C41152/08

DATASET FILE NAME

C41152/08.SLDDRW

UNLESS OTHERWISE SPECIFIED,  
DIMENSIONAL TOLERANCES ARE: IN [mm]

.X ±  
.XX ±

.XXX ±  
ANGLES ±

THIRD ANGLE  
PROJECTION

MATERIAL

SEE NOTES

DRAWING NUMBER

C41152

DRAWN BY

MS

DATE

4/95

CHK

SCALE

NONE

SHEET 1 OF 1

SIZE

B

# Mouser Electronics

Authorized Distributor

Click to View Pricing, Inventory, Delivery & Lifecycle Information:

Panduit:

[LAB300-12-2](#) [LAB600-12-2](#) [LAB350-12-2](#) [LAB500-12-2](#) [LAB1000-12-1](#) [LAB400-12-2](#) [LAB750-12-1](#) [LAB800-12-1](#)  
[LAB500-12-2R](#) [LAB750-12-1R](#)