

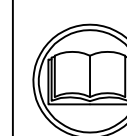
THIS DRAWING IS A CONTROLLED DOCUMENT.

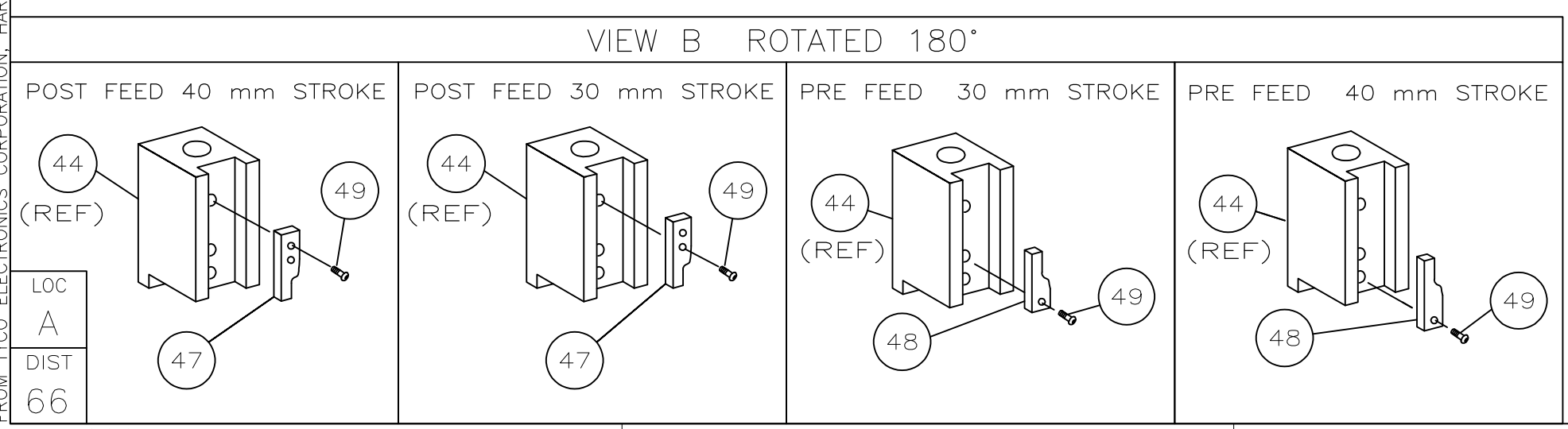
THIS INFORMATION IS CONFIDENTIAL AND PROPRIETARY TO TYCO ELECTRONICS CORPORATION AND ITS WORLDWIDE SUBSIDIARIES AND AFFILIATES. IT MAY NOT BE DISCLOSED TO ANY OTHER PARTY WITHOUT THE WRITTEN AUTHORIZATION OF TYCO ELECTRONICS CORPORATION, HARRISBURG, PENNSYLVANIA, U.S.A.

PART NUMBER	REV	FIRST USED	TERMINATOR	FEED TYPE	DESCRIPTION
1528323-1	B	-	LEADMAKER	MECH POST FEED	CUTS CARRIER
1528323-2	B	-	BENCH	MECH PRE FEED	CUTS CARRIER
1528323-6	B	-	LEADMAKER	MECH POST FEED	CONTINUOUS CARRIER
7-1528323-1	B	-	LEADMAKER	MECH POST FEED	-1 AND SPARE PARTS
7-1528323-2	B	-	BENCH	MECH PRE FEED	-2 AND SPARE PARTS
7-1528323-6	B	-	LEADMAKER	MECH POST FEED	-6 AND SPARE PARTS
7-1528323-7	A	-	-	-	SPARE PARTS KIT

CRIMP DATA AMP TERMINAL AMP CRIMP SPECS			
TERMINAL NAME: SOCKET CONTACT 0.63x1.5mm, SWS 4			
CRIMP	SIZE	TYPE	RANGE
WIRE	1.40 [.055 IN]	F	0.35-0.50mm ²
INSUL	3.18 [.125 IN]	0	2.60 MAX [.102 IN MAX]
WIRE STRIP LENGTH		APPL INSTRUCTION	
3.30-3.90 [.130-.154 IN]		408-8322 & 408-8490	
TERMINAL APPL SPEC		-	FEED 7.00 [.276 IN]

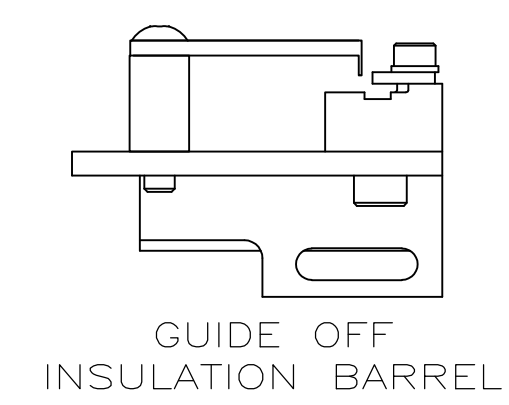
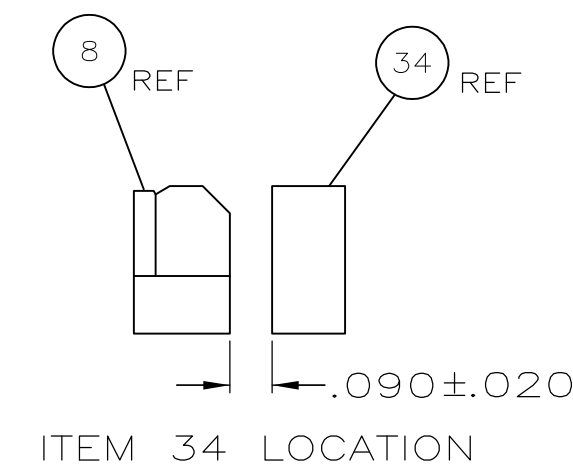
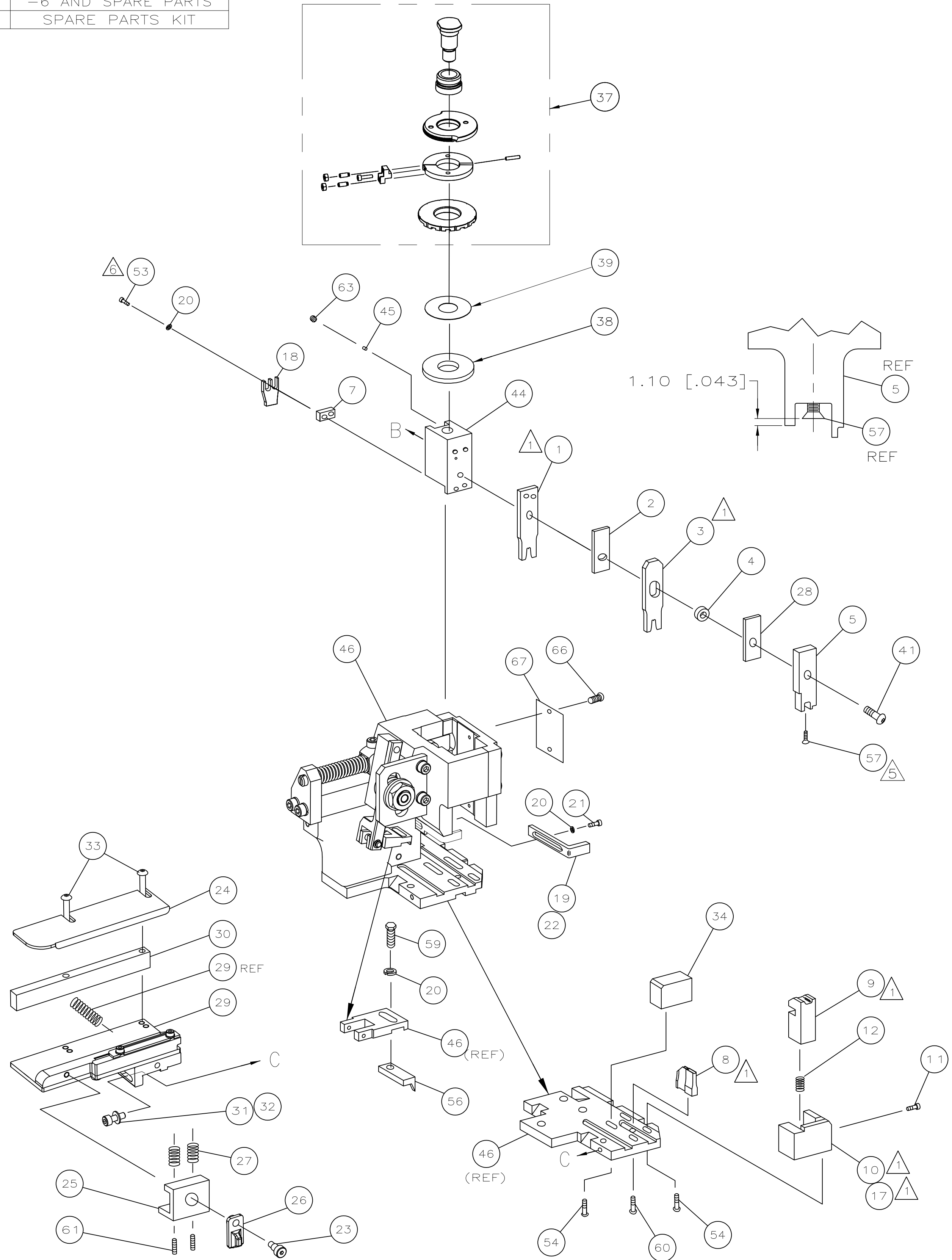
TERMINALS APPLIED				
TERMINAL	SEAL	-	-	-
1241603	967067	-	-	-
-	963142	-	-	-
-	-	-	-	-
-	-	-	-	-
-	-	-	-	-
-	-	-	-	-
-	-	-	-	-
-	-	-	-	-
WIRE SIZE	CRIMP HEIGHT	REF SETTING		
mm ² AWG	*			
0.50mm ²	1.01 ±0.05 [.040 ±.002 IN]	B4		
0.35mm ²	0.92 ±0.05 [.036 ±.002 IN]	C1		
-	-	-		
-	-	-		
-	-	-		
-	-	-		
-	-	-		
-	-	-		
-	-	-		
-	-	-		
-	-	-		
-	-	-		
-	-	-		
SET UP GAGE	LAYOUT			
458637-3	L1528323			

-  1. RECOMMENDED SPARE PARTS.
2. GREASE RAM, CAM, CAM FOLLOWER AND FEED ROD LIGHTLY.
3. LUBRICATE DAILY PER THE APPLICATOR INSTRUCTION SHEET SUPPLIED WITH THE APPLICATOR.
- 4 4. THIS APPLICATOR APPLIES TERMINAL WITH A SEAL. INSULATION DIA QUOTED IS OUTSIDE DIAMETER OF SEAL. WIRE INSULATION DIA IS DEPENDENT ON SEAL BEING APPLIED. REFER TO APPL. SPEC. FOR TERMINAL INS. RANGE DETAILS.
- 5 5. APPLY TORQ-SEAL IN ALLEN SOCKET TO FILL HOLE AFTER FLAT HD HAS BEEN ADJUSTED TO CORRECT HEIGHT AT QUALIFICATION. APPLY #1-23419-5 LOC-TITE TO THREADS.
- 6 6. CUT TO LENGTH AT ASSY.



*** WARNING:**

ON INSTALLATION, SET WIRE DISC TO LARGEST WIRE SIZE SETTING. USE OF SETTINGS BELOW MIN REQUIRED CRIMP HEIGHT SETTING WILL CAUSE DAMAGE TO CRIMP TOOLING.



-	1	1	1	1	1	1	1528323	PRINT, APPLICATOR LOG SHEET	73
-	1	1	1	1	1	1	1338705-3	DOCUMENTATION PACKAGE	72
									70
									69
									68
-	1	1	1	1	1	1	461264-5	PLATE, IDENTIFICATION	67
-	2	2	2	2	2	2	21017-2	SCR,DRIVE(#2x.19)ID PLATE	66
									65
									64
-	1	1	1	1	1	1	3-18031-0	SCR,SKT SET(M6X6)RAM	63
									62
-	2	2	2	2	2	2	2-18032-5	SCR,SET(M5X20)DRAG	61
-	1	1	1	1	1	1	18024-7	SCR,BHC(M4X10)ANVIL	60
-	1	1	1	1	1	1	5-18022-2	SCR,HEX(M4X8)FEED FINGER	59
									58
-	1	1	1	1	1	1	985575-3	SCR,FHC(M3X10)DEP	57
-	1	1	1	1	1	1	1338685-1	PAWL, FEED	56
									55
-	4	4	4	4	4	4	18024-8	SCR,BHC(M4x12)SHEAR HOLDER	54
-	2	2	2	2	2	2	1-18023-1	SCR,SHC(M4x10)TERM HLD DWN	53
									52
									51
									50
-	1	1	1	1	1	1	18024-3	SCR,BHC(M3X10)CAM	49
-	-	1	-	-	1	-	1338675-1	CAM, PRE FEED 30 & 40 mm ST	48
-	1	-	1	1	-	1	1338676-1	CAM, POST FEED 30 & 40 mm ST	47
-	1	1	1	1	1	1	1320999-3	APPLICATOR BASIC SUBASSY	46
-	1	1	1	1	1	1	690191-1	PLUG, NYLON	45
-	1	1	1	1	1	1	1338660-1	RAM	44
									43
									42
-	1	1	1	1	1	1	2-18024-6	SCR,BHC(M8X25)RAM	41
									40
-	1	1	1	1	1	1	690125-1	SHIM SUBASSY	39
-	1	1	1	1	1	1	469367-8	SPACER, FINE ADJUST	38
-	1	1	1	1	1	1	879103-3	FINE ADJUST HEAD SUBASSY	37
									36
									35
-	1	1	1	1	1	1	1320934-6	SUPPORT, TERMINAL	34
-	2	2	2	2	2	2	1-18024-0	SCR,BHC(M4X20)STRIP GUIDE	33
-	1	1	1	1	1	1	18027-2	WASHER, FLAT(M4)	32
-	1	1	1	1	1	1	1-18023-2	SCR,SKT CAP(M4X12)MOUNT BLOCK	31
-	1	1	1	1	1	1	1320908-1	SPACER, STRIP GUIDE	30
-	1	1	1	1	1	1	1633073-1	STRIP GUIDE PLATE ASSY	29
-	1	1	1	1	1	1	455888-6	SPACER, FRONT SHEAR DEP	28
-	2	2	2	2	2	2	1-22284-0	SPRING, DRAG	27
-	1	1	1	1	1	1	356835-1	LEVER, DRAG RELEASE	26
-	1	1	1	1	1	1	240792-1	DRAG, TERMINAL	25
-	1	1	1	1	1	1	1320928-1	PLATE, STRIP GUIDE	24
-	1	1	1	1	1	1	980371-4	SCR,SHC SHLD	23
-	1	-	1	1	-	1	690472-2	STRIPPER	22
-	1	1	1	1	1	1	1-18023-1	SCR,SHC(M4X10)STRIPPER	21
-	4	4	4	4	4	4	18025-2	WASHER,LOCK(M4)STRIPPER	20
-	-	1	-	-	1	-	690472-1	STRIPPER	19
-	1	1	1	1	1	1	879657-2	HOLDER, TERMINAL	18
-	1	-	-	1	-	-	1338684-2	HOLDER, SHEAR, FRONT (NO-CUT)	17
									16
									15
									14
									13
-	1	1	1	1	1	1	3-22280-3	SPRING, SHEAR	12
-	1	1	1	1	1	1	356885-5	STOP, SHEAR	11
-	-	1	1	-	1	1	1-1320921-0	HOLDER, SHEAR, FRONT (CUT)	10
-	1	1	1	1	1	1	318707-1	SHEAR, FLOAT (FRONT)	9
1	2	2	2	1	1	1	5-1333201-1	ANVIL	8
-	1	1	1	1	1	1	2-240641-4	SPACER, DEPRESSOR (REAR)	7
									6
-	1	1	1	1	1	1	1338680-1	DEPRESSOR, SHEAR (FRONT)	5
-	1	1	1	1	1	1	238011-2	SPACER, BLOCK CRIMPER	4
1	2	2	2	1	1	1	1-562244-3	CRIMPER, INSULATION	3
-	1	1	1	1	1	1	455888-6	SPACER, CRIMPER	2
1	2	2	2	1	1	1	456402-1	CRIMPER, WIRE	1
-77	-76	-72	-71	-6	-2	-1	PART NO	DESCRIPTION	ITEM NO
QTY REQD PER ASSY							PARTS LIST		
							DWN: M.CLIFFORD 29JUL03	MATERIAL: -	HEAT TREAT: -
							CHK: -	-	-
							APVD: F.BACKHURST 29JUL03	Tyco Electronics Tyco Electronics Corporation Harrisburg, PA 17105-3608	
							NAME: -	FINE ADJ SIDE FD HD-I APPL	
							SCALE: -	SIZE: A1	DRAWING NO: 1528323
							SHEET: 1	of 1	REV: B

CUSTOMER ACCESSIBLE PRODUCTION DRAWING

Mouser Electronics

Authorized Distributor

Click to View Pricing, Inventory, Delivery & Lifecycle Information:

[TE Connectivity:](#)

[1528323-1](#)