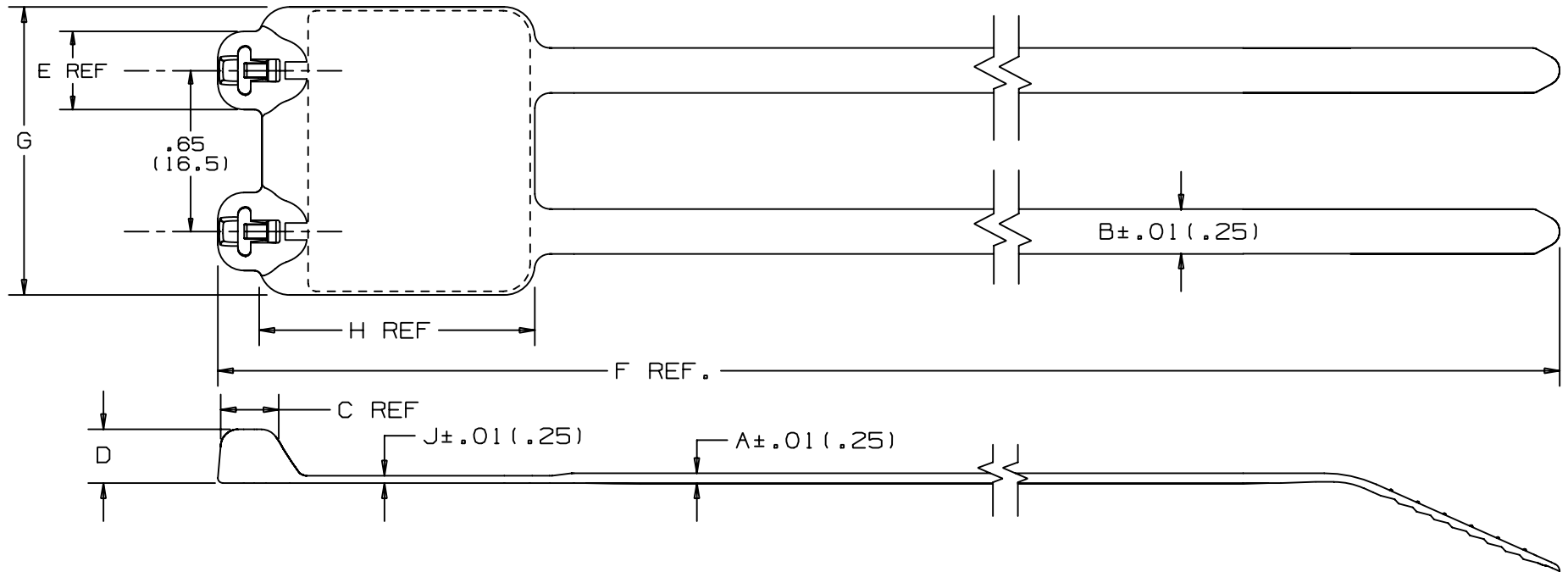


THIS COPY IS PROVIDED ON A RESTRICTED BASIS AND IS NOT TO BE USED IN ANY WAY DETRIMENTAL TO THE INTERESTS OF PANDUIT CORP.



PANDUIT * PART NO.	BUNDLE DIA.		A	B	C	D	E	F	G	H	J	WRITE-ON AREA in. (mm)	MIN LOOP** TENSILE	CROSS- SECTION	WEIGHT
	MIN. _{in} (mm)	MAX. _{in} (mm)	in (mm)	in (mm)	in (mm)	in (mm)	in (mm)	in (mm)	in (mm)	in (mm)	in (mm)				
B2M2S	.37 (9.5)	2.00 (51)	.045 (1.2)	.185 (4.7)	.205 (5.2)	.220 (5.6)	.320 (8.1)	8.0 (203)	1.16 (29.5)	1.1 (27.9)	.032 (.81)	1.15 × .91 (29.2 × 23.1)	50 (222)	STANDARD	.65 (294)

NOTES:

- *1) SEE CURRENT PRICE SHEET FOR PART NUMBER SUFFIX DESIGNATION FOR PACKAGE SIZE AND PART COLOR.
- **2) LOOP TENSILE IS PER LEG OF STRAP.

DIMENSIONS IN PARENTHESES ARE IN METRIC UNITS

PANDUIT CORP. TINLEY PARK, ILLINOIS

DOME-TOP Barb Ty MARKER TIE
BM SERIES

UNLESS OTHERWISE SPECIFIED,
DIMENSIONAL TOLERANCES ARE:
(.X) ± .005 (.127) ± .005 (.127)
(.XX) ± .02 (.51) ANGLES ± .005 (.127)

UNLESS OTHERWISE SPECIFIED,
ALL DIMENSIONS ARE GIVEN
IN INCHES, THIRD ANGLE PROJECTION.

DRAWN BY
JABO

MAT'L:

SCALE
NONE

DATE
6/04/97

NYLON 6.6

DRAWING NO.

BT-0251

DWG
A
SIZE

REV	DATE	BY	CHK	DESCRIPTION	ECN	R	CUST	SUP
4	12/1/04	ERW		REWORDED TITLE BLOCK	0251	4		

Mouser Electronics

Authorized Distributor

Click to View Pricing, Inventory, Delivery & Lifecycle Information:

[Panduit:](#)

[B2M2S-D](#) [B2M2S-D0](#)