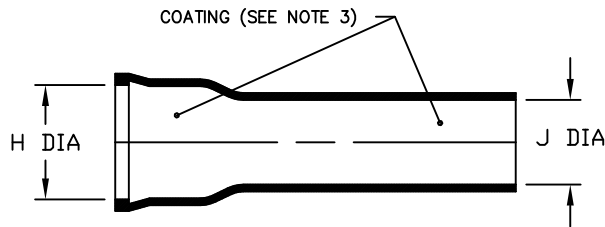
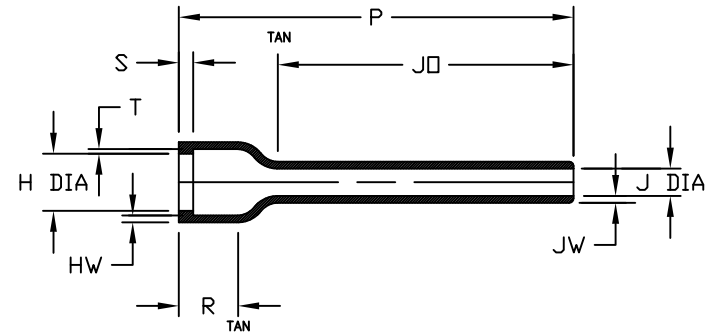


NOTES:

- ALL DIMENSIONS ARE IN $\frac{\text{INCHES}}{[\text{MILLIMETERS}]}$
- DIMENSIONS APPEARING IN TABLE ARE AS FOLLOWS:
 - a - AS SUPPLIED
 - b - AFTER UNRESTRICTED RECOVERY
- COATING IS OPTIONAL. AS SUPPLIED DIMENSIONS APPEARING IN TABLE ARE FOR UNCOATED PARTS. WHEN COATING IS ADDED, ENTRY DIAMETERS WILL BE REDUCED BY .06 MAX.
- "S" & "T" DIMENSIONS APPLY TO A MINIMUM OF 240° OF CIRCUMFERENCE



AS SUPPLIED



AFTER UNRESTRICTED RECOVERY

REVISIONS

| LTR | DESCRIPTION | DATE |
|-----|---------------------------|----------|
| U2 | REVISED PER ECO-14-003735 | 03/05/14 |

TABLE OF DIMENSIONS

| PART NUMBER | H | | J | | P ±10% b | R ±10% b | JO ±10% b | HW +.06/- .03 b | JW ±.03 b | S +.06/- .03 b | T Ref b |
|-------------|-----------------------|-----------------------|-----------------------|----------------------|------------------------|----------------------|------------------------|-----------------------|---------------------|----------------------|---------------------|
| | Min | Max | Min | Max | | | | | | | |
| | a | b | a | b | | | | | | | |
| 202F211 | $\frac{.94}{[23,9]}$ | $\frac{.39}{[9,9]}$ | $\frac{.68}{[17,3]}$ | $\frac{.26}{[6,6]}$ | $\frac{4.17}{[105,9]}$ | $\frac{.46}{[11,7]}$ | $\frac{3.40}{[86,4]}$ | $\frac{.06}{[1,5]}$ | $\frac{.06}{[1,5]}$ | $\frac{.06}{[1,5]}$ | $\frac{.05}{[1,3]}$ |
| 202F221 | $\frac{1.07}{[27,2]}$ | $\frac{.52}{[13,2]}$ | $\frac{.82}{[20,8]}$ | $\frac{.30}{[7,6]}$ | $\frac{4.77}{[121,2]}$ | $\frac{.48}{[12,2]}$ | $\frac{3.88}{[98,6]}$ | $\frac{.06}{[1,5]}$ | $\frac{.06}{[1,5]}$ | $\frac{.06}{[1,5]}$ | $\frac{.05}{[1,3]}$ |
| 202F232 | $\frac{1.22}{[31,0]}$ | $\frac{.73}{[18,5]}$ | $\frac{.96}{[24,4]}$ | $\frac{.35}{[8,9]}$ | $\frac{5.46}{[138,7]}$ | $\frac{.48}{[12,2]}$ | $\frac{4.44}{[112,8]}$ | $\frac{.07}{[1,8]}$ | $\frac{.06}{[1,5]}$ | $\frac{.07}{[1,8]}$ | $\frac{.05}{[1,3]}$ |
| 202F242 | $\frac{1.40}{[35,6]}$ | $\frac{.87}{[22,1]}$ | $\frac{1.13}{[28,7]}$ | $\frac{.40}{[10,2]}$ | $\frac{6.28}{[159,5]}$ | $\frac{.48}{[12,2]}$ | $\frac{5.15}{[130,8]}$ | $\frac{.07}{[1,8]}$ | $\frac{.06}{[1,5]}$ | $\frac{.07}{[1,8]}$ | $\frac{.05}{[1,3]}$ |
| 202F253 | $\frac{1.53}{[38,9]}$ | $\frac{1.11}{[28,2]}$ | $\frac{1.24}{[31,5]}$ | $\frac{.43}{[10,9]}$ | $\frac{7.00}{[177,8]}$ | $\frac{.55}{[14,0]}$ | $\frac{5.60}{[142,2]}$ | $\frac{.07}{[1,8]}$ | $\frac{.06}{[1,5]}$ | $\frac{.07}{[1,8]}$ | $\frac{.07}{[1,8]}$ |
| 202F263 | $\frac{1.78}{[45,2]}$ | $\frac{1.27}{[32,3]}$ | $\frac{1.51}{[38,4]}$ | $\frac{.50}{[12,7]}$ | $\frac{8.00}{[203,2]}$ | $\frac{.60}{[15,2]}$ | $\frac{6.42}{[163,1]}$ | $\frac{.07}{[1,8]}$ | $\frac{.06}{[1,5]}$ | $\frac{.07}{[1,8]}$ | $\frac{.07}{[1,8]}$ |
| 202F274 | $\frac{2.03}{[51,6]}$ | $\frac{1.62}{[41,1]}$ | $\frac{1.79}{[45,5]}$ | $\frac{.59}{[15,0]}$ | $\frac{8.00}{[203,2]}$ | $\frac{.60}{[15,2]}$ | $\frac{6.21}{[157,7]}$ | $\frac{.07}{[1,8]}$ | $\frac{.07}{[1,8]}$ | $\frac{.07}{[1,8]}$ | $\frac{.07}{[1,8]}$ |

IF THIS DOCUMENT IS PRINTED IT BECOMES UNCONTROLLED.
CHECK FOR THE LATEST REVISION.

Raychem Molded Parts
CUSTOMER DRAWING

COMPATIBILITY CHART

| MATERIAL DASH NO. | MATERIAL DESCRIPTION | RT SPEC | COATING SLASH NUMBER | COATING S NUMBER |
|-------------------|----------------------|----------------|----------------------|------------------------|
| -50 | Flexible, VPB | RT-1313 | N/A | |
| -51 | Flexible, EPB | RT-1321 | /86,/164,/180 | S-1048;S-1124;S-1030/1 |
| -71 | Flexible, Polyolefin | RT-1316 | /42,/86,/180 | S-1017;S-1048;S-1030/1 |
| -770 | NBCCS | RT-770 TYPE II | N/A | |

UNLESS OTHERWISE SPECIFIED
DIMENSIONS ARE INCHES. METRIC
DIMENSIONS ARE IN BRACKETS.
DECIMAL TOLERANCES
.XXX ± 0.005 [0.13 mm]
.XX ± 0.01 [0.25 mm]
.X ± 0.1 [0.50 mm]
ANGLE TOLERANCE
.X ± 1 DEG.

TE CONNECTIVITY RESERVES THE RIGHT TO
AMEND THIS DRAWING AT ANY TIME. USERS
SHOULD EVALUATE THE SUITABILITY OF THE
PRODUCT FOR THEIR APPLICATION.

© 2013 Tyco Electronics Corporation, a TE connectivity Ltd. company. All rights reserved.

DRAWN
MMazariegos

APPROVED
SGravano

THIRD ANGLE
PROJECTION



TE Connectivity

TITLE

Boot, Straight With Lip

SIZE
B

CODE IDENT. NO.
06090

DWG. NO.

202F211thru274

DO NOT SCALE THIS DRAWING

SHEET 1 OF 1

Mouser Electronics

Authorized Distributor

Click to View Pricing, Inventory, Delivery & Lifecycle Information:

[TE Connectivity:](#)

[202F232-71/42-0](#)