

SPECIFICATIONS:

ELECTRICAL:
INSULATOR RESISTANCE: 5 GOHMS Min.
DIELECTRIC WITHSTANDING: 1,000 VAC for 1 MINUTE
OPERATING TEMPERATURE: -55° C ~ +125° C
SIGNAL CONTACT RESISTANCE: 2.7 mOHMS Max.
POWER CONTACT RESISTANCE: 1.0 mOHMS Max.
POWER PINS: SEE PART No. BELOW
SIGNAL PINS: 5 AMPS

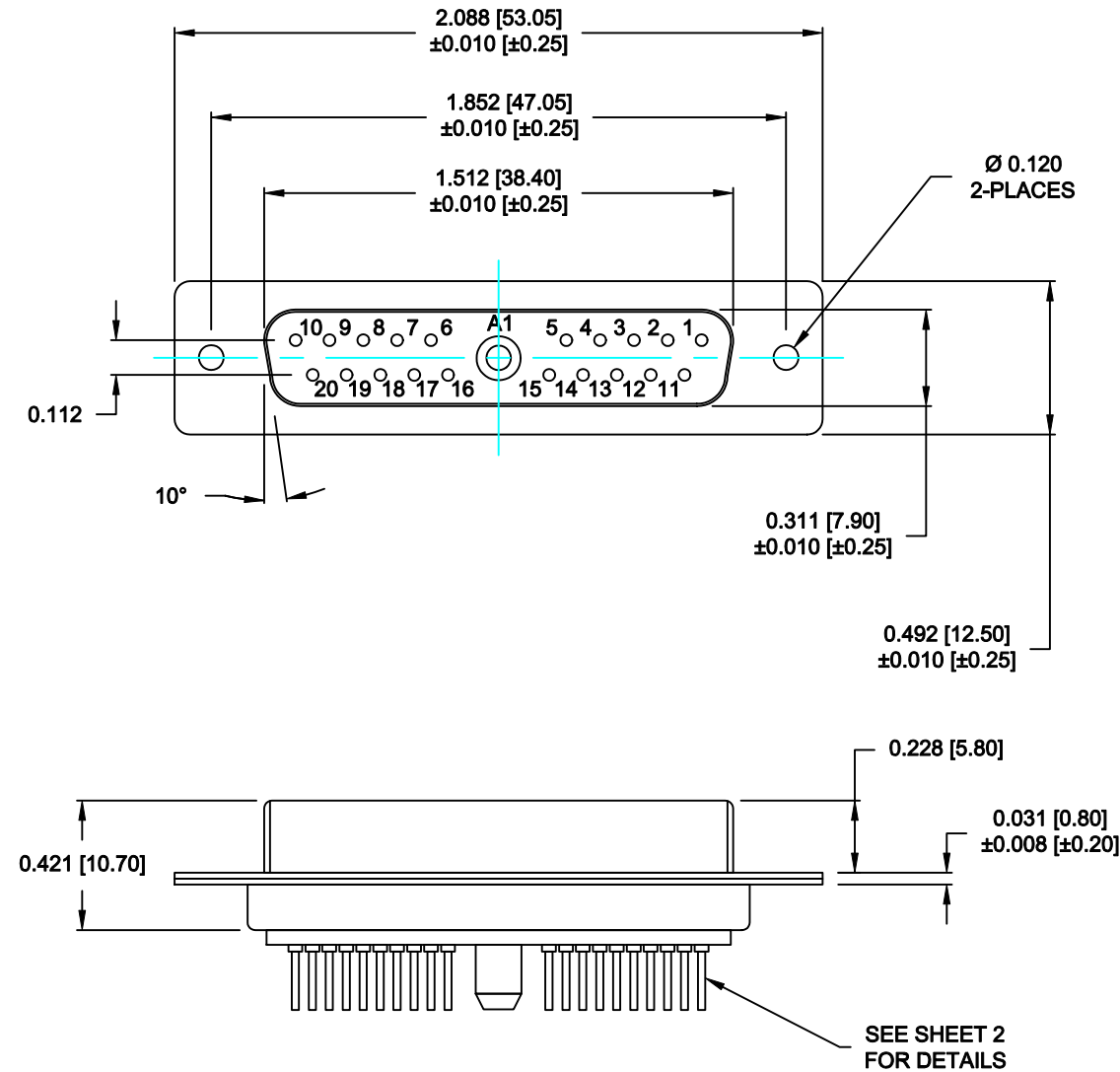
MECHANICAL:
CONTACT INSERTION FORCE: 4.5 Kg Max.
CONTACT SEPARATOR FORCE: 0.3Kg Min.

MATERIALS:
CONTACTS: COPPER ALLOY
INSULATOR: PBT UL94V-0 RATED, BLACK
230°C PROCESS TEMP.
SHELL: STEEL


FINISH:
SHELL: NICKEL
CONTACTS: FULL GOLD FLASH

681M21W1203L001

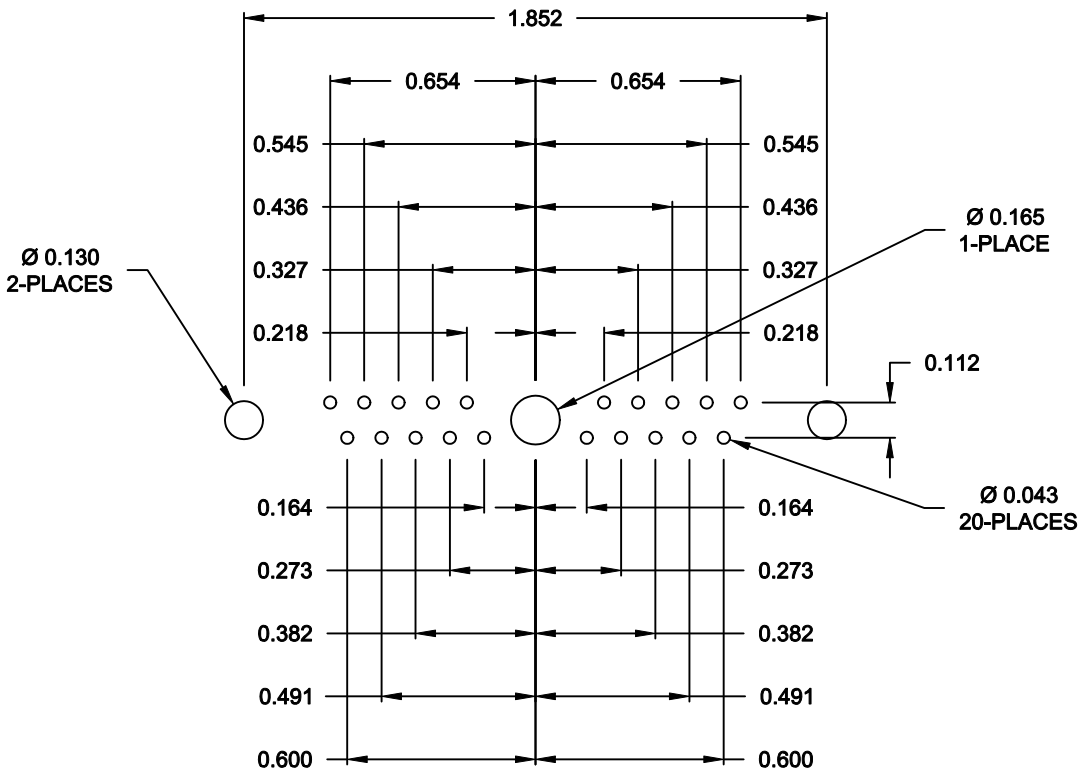
00 = 20 / 40 AMPS



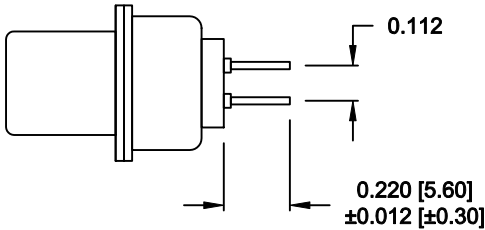
RoHS COMPLIANT

	THESE DRAWINGS AND SPECIFICATIONS ARE THE PROPERTY OF NorComp AND SHALL NOT BE REPRODUCED, COPIED OR USED AS THE BASIS FOR THE MANUFACTURE OF SALE OF APPARATUS WITHOUT WRITTEN PERMISSION.	DRAWN: M. SIGMON		DATE: 07-19-13		
		CHECKED: X		DATE: X		
NorComp	SCALE: X		SHEET 1		OF 2	REV 0
	DWG NO. 681M21W1203L001					

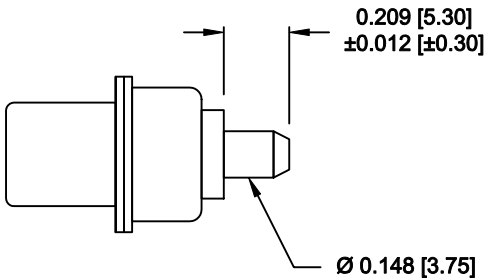
NOTE:
SIGNAL AND POWER CONTACTS
COME PRE-LOADED INTO INSULATORS



RECOMMENDED PCB LAYOUT




SIGNAL CONTACTS



POWER CONTACTS

RoHS COMPLIANT

	THESE DRAWINGS AND SPECIFICATIONS ARE THE PROPERTY OF NorComp AND SHALL NOT BE REPRODUCED, COPIED OR USED AS THE BASIS FOR THE MANUFACTURE OF SALE OF APPARATUS WITHOUT WRITTEN PERMISSION.	DRAWN: M. SIGMON		DATE: 07-19-13		
		CHECKED: X		DATE: X		
NorComp		SCALE: N.T.S.	SHEET 2		OF 2	REV 0
		DWG NO. 681M21W1203L001				

Mouser Electronics

Authorized Distributor

Click to View Pricing, Inventory, Delivery & Lifecycle Information:

NorComp:

681M21W1203L001