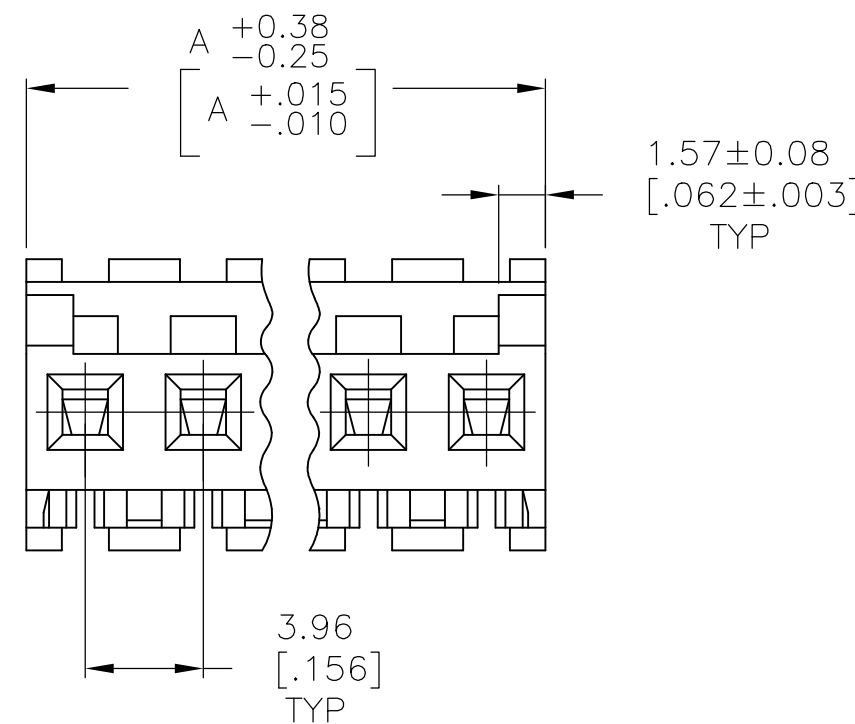
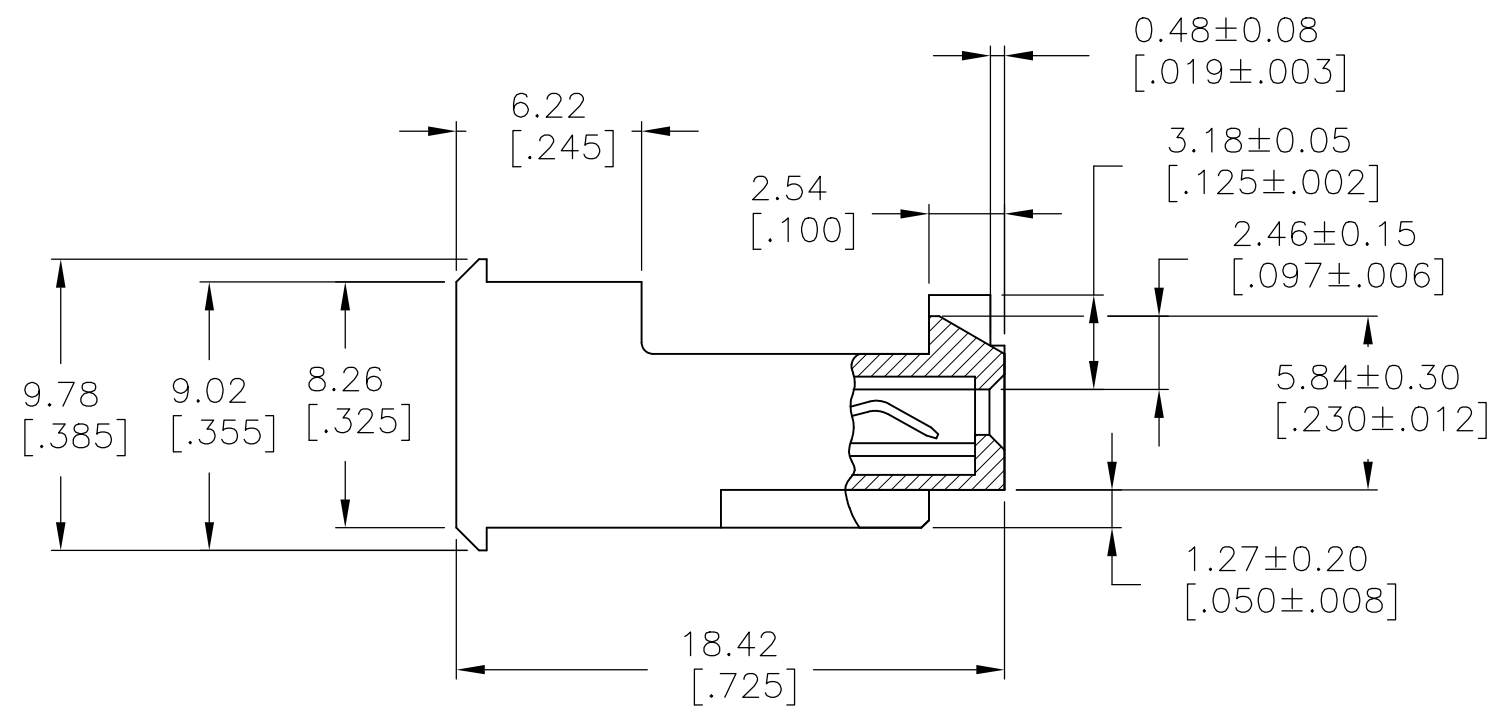
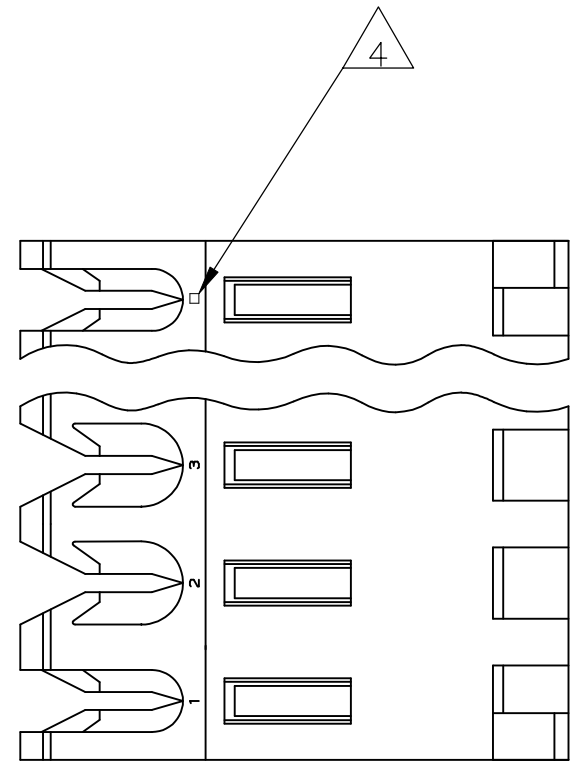


THIS DRAWING IS UNPUBLISHED. RELEASED FOR PUBLICATION
 © COPYRIGHT - By - TE CONNECTIVITY ALL RIGHTS RESERVED.

LOC	DIST	REVISIONS			
P	LTR	DESCRIPTION	DATE	DWN	APVD
CM	54				
	D2	REVISED PER ECR-17-018283	07FEB2018	BDA	SG

- 1 MATERIAL: CONNECTOR - NYLON UL94V-2 (RED).
CONTACTS - 0.30[.012] THICK COPPER ALLOY (BRIGHT TIN-LEAD 0.00203[.000080] MIN. THICK FOR CONTACTS 644467-2 THRU 1-644467-4) (MATTE WHISKER MITIGATED TIN 0.00203[.000080] MIN THICKNESS OVER NICKEL UNDERPLATE FOR 3-644467-2 THRU 4-644467-4).
- 2 CONTACTS ACCEPT 22 AWG WIRE WITH 2.41[.095] MAX INSULATION DIAMETER.
- 3 CONTACTS MUST ACCEPT 1.14±0.03[.045±.001] SQUARE POST AND REMAIN LOCKED IN POSITION.
- 4 IDENTIFICATION NUMBER FOR LAST CIRCUIT MAY NOT APPEAR ON ALL ASSEMBLIES.
- 5 DIMENSIONS IN BRACKETS ARE IN INCHES.
- 6 HOUSING FEATURES ARE: FEED-THRU WITH LOCKING RAMP AND POLARIZING TAB.
- 7 OBSOLETE PARTS: OBSOLETE CIS STREAMLINING PER D.RENAUD/D.SINISI
- 8 OBSOLETE PARTS



DIM A	NO. OF CIRCUITS	PART NO
55.47 [2.184]	14	4-644467-4
51.51 [2.028]	13	4-644467-3
47.55 [1.872]	12	4-644467-2
43.59 [1.716]	11	4-644467-1
39.62 [1.560]	10	4-644467-0
35.66 [1.404]	9	3-644467-9
31.70 [1.248]	8	3-644467-8
27.74 [1.092]	7	3-644467-7
23.77 [.936]	6	3-644467-6
19.81 [.780]	5	3-644467-5
15.85 [.624]	4	3-644467-4
11.89 [.468]	3	3-644467-3
7.92 [.312]	2	3-644467-2
55.47 [2.184]	14	1-644467-4
51.51 [2.028]	13	1-644467-3
47.55 [1.872]	12	1-644467-2
43.59 [1.716]	11	1-644467-1
39.62 [1.560]	10	1-644467-0
35.66 [1.404]	9	644467-9
31.70 [1.248]	8	644467-8
27.74 [1.092]	7	644467-7
23.77 [.936]	6	644467-6
19.81 [.780]	5	644467-5
15.85 [.624]	4	644467-4
11.89 [.468]	3	644467-3
7.92 [.312]	2	644467-2

- 7 SUPERSEDED
- 7 SUPERSEDED
- 8 SUPERSEDED
- 7 SUPERSEDED
- 7 SUPERSEDED
- 8 SUPERSEDED

THIS DRAWING IS A CONTROLLED DOCUMENT.		DWN B. LEWIS 12 FEB 91		
DIMENSIONS: mm [INCHES]		CHK R. SWING 12 FEB 91		
TOLERANCES UNLESS OTHERWISE SPECIFIED:		APVD D. CLARK 20 FEB 91	NAME	
0 PLC ± -	1 PLC ± -	PRODUCT SPEC		
2 PLC ± -	3 PLC ± -	108-1051		
4 PLC ± -	ANGLES ± -	APPLICATION SPEC		
MATERIAL	FINISH	WEIGHT	SIZE	CAGE CODE
1	1		A2	00779
CUSTOMER DRAWING		DRAWING NO		RESTRICTED TO
		SCALE		SHEET
		4:1		1 of 1
				REV
				D2