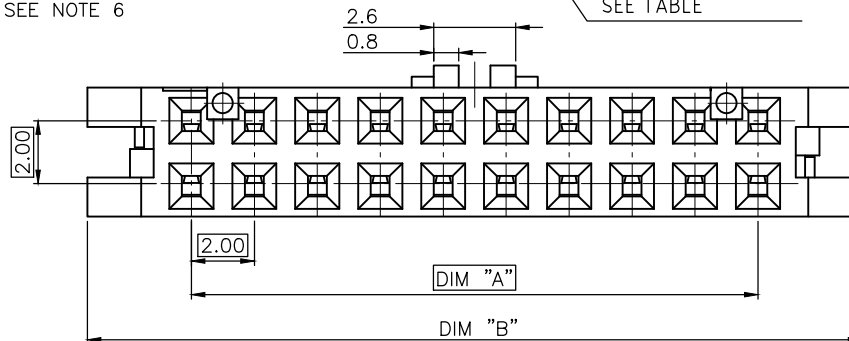
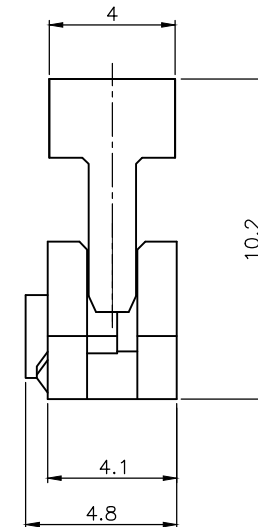
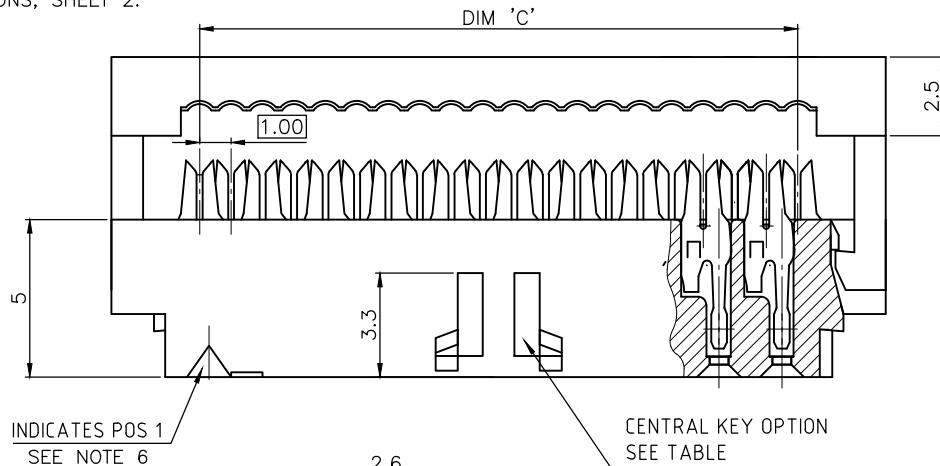


PRODUCT NUMBER

89361-YXXSLF

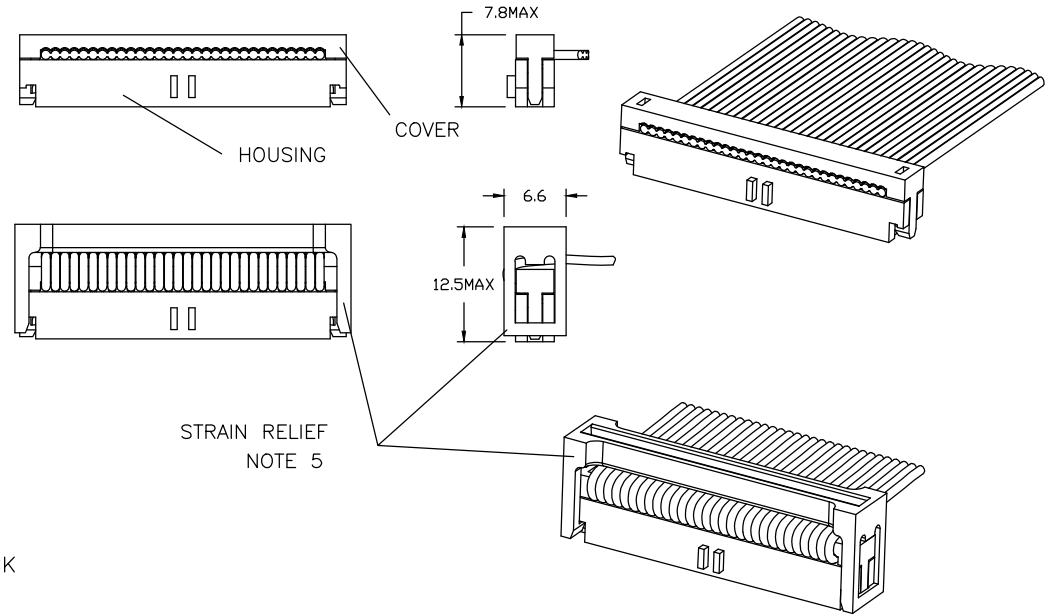
- LEAD FREE, RoHS COMPLIANT
SEE NOTE 4
- STRAIN RELIEF OPTION, NOTE 5.
- TOTAL NB OF POSITIONS, SHEET 2.
- FEATURES, SHEET 2.



VIEW WITHOUT COVER

mat'l. code SEE NOTE		surface ISO 1302 <input checked="" type="checkbox"/> ISO 406 ISO 1101		projection 	product family MINITEK	
ltr	ecn no	dr	date	tolerances unless otherwise specified		title 2.00mm IDC 0.2µm Au
K	F06-0211	LMU	06.07.03	angles	.0±.3	
L	F07-0215	LMU	07.06.12	linear	.00±.13	scale 1:1
M	F08-0218	JCO	08.09.09	0°±x'	.000±.05	
N	F09-0081	JCO	09.08.27	dr	L.MULIN 07.03.20	dwg no 89361
P	F-21434	BVE	15.07.16	enr	J.COMPAGNON 07.03.20	
sheet index		revision sheet	P 1	P 2	sheet 1 of 2 size A3	
					type Product Customer Drawing	

PRODUCT SIZE	TOTAL NB OF POS	DIM "A"	DIM "B"	DIM "C"	STRAIN RELIEF OPTION
89361-X06LF	2x3	4	10.6	5	YES
-X08LF	2x4	6	12.6	7	YES
-X10LF	2x5	8	14.6	9	YES
-X12LF	2x6	10	16.6	11	YES
-X14LF	2x7	12	18.6	13	YES
-X16LF	2x8	14	20.6	15	YES
-X18LF	2x9	16	22.6	17	YES
-X20LF	2x10	18	24.6	19	YES
-X22LF	2x11	20	26.6	21	NOT TOOLED
-X24LF	2x12	22	28.6	23	YES
-X26LF	2x13	24	30.6	25	YES
-X28LF	2x14	26	32.6	27	NOT TOOLED
-X30LF	2x15	28	34.6	29	YES
-X34LF	2x17	32	38.6	33	YES
-X36LF	2x18	34	40.6	35	NOT TOOLED
-X40LF	2x20	38	44.6	39	YES
-X44LF	2x22	42	48.6	43	YES
-X48LF	2x24	46	52.6	47	YES
-X50LF	2x25	48	54.6	49	YES



NOTES :

- MATERIAL : TERMINAL PHOSPHORE BRONZE
BASE AND COVER : PBT GLASSFILLED UL 94V-0 BLACK
- PLATING : GOLD 0.2µm Au MIN ON CONTACT AREA
NICKEL 1.27µm MIN UNDERPLATING ALL OVER
- RECOMMENDED CABLE SIZE : AWG28, STRANDED
- THIS PRODUCT MEETS EUROPEAN UNION DIRECTIVES AND OTHER COUNTRY REGULATIONS AS PER GS-22-008.
PACKAGING SPECIFICATION AS PER GS-14-920.
- S= STRAIN RELIEF ACCESSORY, SEE TABLE FOR AVAILABILITY,
OMIT LETTER FROM PARTNUMBER IF NOT APPLICABLE.
- SIZE 2 X 3 AND 2 X 4 WILL NOT HAVE POSITION #1 TRIANGLE SHOWING

				AVAILABILITY
89361-7XX			○	FROM 2X3 POS UP TO 2X17
89361-3XX		○		FROM 2x17 POS UP TO 2x25
89361-1XX	○			FROM 2x3 POS UP TO 2x25
PRODUCT CODE	WITHOUT CENTRAL KEY	WITH CENTRAL KEY	WITH CENTRAL KEY AND FRICTION LATCH BUMP	

mat'l. code SEE NOTE		surface ISO 1302 ✓	tolerance ISO 406 ISO 1101	projection 	product family
ltr	ecn no dr date	tolerances unless otherwise specified			title 2.00mm IDC 0.2µm Au
K	F06-0211LMU 06.07.03	angles	.0±.3		
L	F07-0215LMU 07.06.12	linear	.00±.13	scale 1:1	dwg no 89361
M	F08-0218JCO 08.09.09	0°±'	.000±.05		
N	F09-0081JCO 09.08.27	dr	L.MULIN 07.03.20		sheet 2 of 2 size A3
P	F-21434 BVE 15.07.16	enr	J.COMPAGNON 07.03.20		type Product Customer Drawing
		chr			
sheet index	revision sheet				

Mouser Electronics

Authorized Distributor

Click to View Pricing, Inventory, Delivery & Lifecycle Information:

[FCI / Amphenol:](#)

[89361-134LF](#) [89361-110LF](#) [89361-310LF](#) [89361-130LF](#) [89361-314LF](#) [89361-712LF](#) [89361-122LF](#) [89361-128LF](#)
[89361-148LF](#) [89361-348LF](#) [89361-730LF](#) [89361-320LF](#) [89361-706LF](#) [89361-106LF](#) [89361-108LF](#) [89361-112LF](#)
[89361-114LF](#) [89361-116LF](#) [89361-118LF](#) [89361-120LF](#) [89361-124LF](#) [89361-126LF](#) [89361-136LF](#) [89361-140LF](#)
[89361-144LF](#) [89361-150LF](#) [89361-306LF](#) [89361-308LF](#) [89361-312LF](#) [89361-316LF](#) [89361-334LF](#) [89361-336LF](#)
[89361-340LF](#) [89361-344LF](#) [89361-350LF](#) [89361-708LF](#) [89361-710LF](#) [89361-714LF](#) [89361-716LF](#) [89361-718LF](#)
[89361-720LF](#) [89361-722LF](#) [89361-724LF](#) [89361-726LF](#) [89361-728LF](#) [89361-750LF](#) [89361-340SLF](#) [89361-118SLF](#)
[89361-726SLF](#) [89361-130SLF](#) [89361-134SLF](#) [89361-106SLF](#) [89361-718SLF](#) [89361-706SLF](#) [89361-712SLF](#)
[89361-708SLF](#) [89361-710SLF](#) [89361-112SLF](#) [89361-140SLF](#) [89361-150SLF](#) [89361-108SLF](#) [89361-720SLF](#)
[89361-344SLF](#) [89361-120SLF](#) [89361-716SLF](#) [89361-334SLF](#) [89361-116SLF](#) [89361-730SLF](#) [89361-114SLF](#)
[89361-348SLF](#) [89361-724SLF](#) [89361-350SLF](#) [89361-148SLF](#) [89361-714SLF](#) [89361-126SLF](#) [89361-144SLF](#)
[89361-110SLF](#) [89361-124SLF](#)