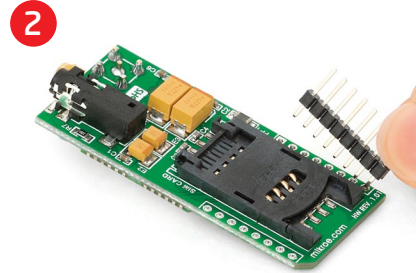
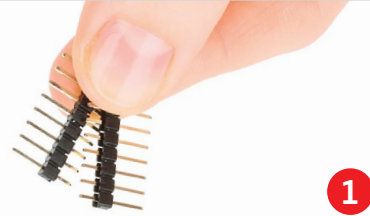




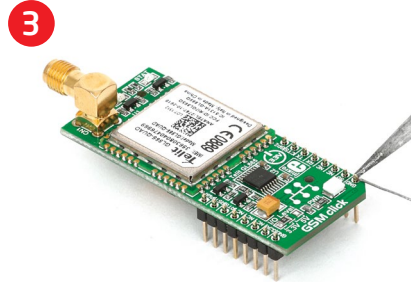
GSM click™

2. Soldering the headers

Before using your click™ board, make sure to solder 1x8 male headers to both left and right side of the board. Two 1x8 male headers are included with the board in the package.

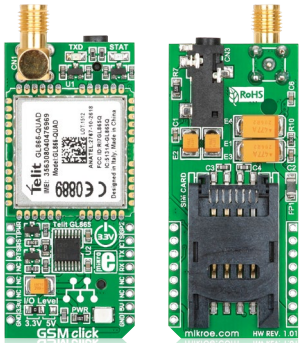


Turn the board upside down so that bottom side is facing you upwards. Place shorter parts of the header pins in both soldering pad locations.

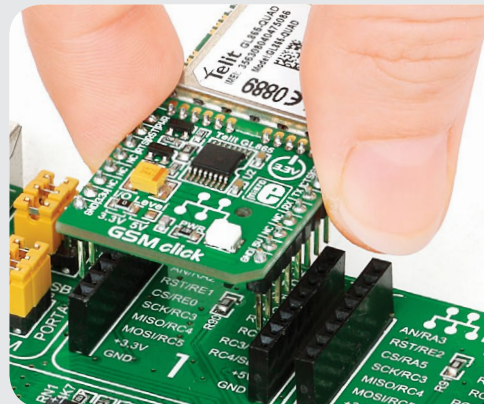


Turn the board upward again. Make sure to align the headers so that they are perpendicular to the board, then solder the pins carefully.

1. Introduction

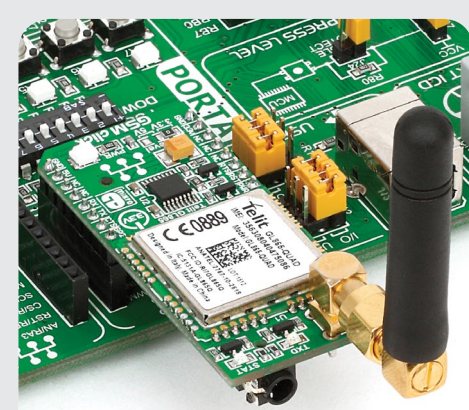


GSM click™ is an add-on board in mikroBUS™ form factor. It's a compact and easy solution for adding GSM/GPRS mobile phones standard to your design. It features a **GL865-QUAD** GSM/GPRS module, a **TXB0106** 6-bit bidirectional voltage-level translator and a SIM CARD socket. GSM click™ communicates with the target board microcontroller via seven mikroBUS™ lines (RX, TX, INT, PWM, CS, RST and AN). The board is designed to use 3.3V and 5V I/O voltage levels. A LED diode indicates the presence of power supply.



3. Plugging the board in

Once you have soldered the headers your board is ready to be placed into desired mikroBUS™ socket. Make sure to align the cut in the lower-right part of the board with the markings on the silkscreen at the mikroBUS™ socket. If all of the pins are aligned correctly, push the board all the way into the socket.



4. Essential features

GSM click™ with its Telit **GL865-QUAD** IC is ideal for mobile devices. It features GSM/GPRS protocol stack 3GPP (release 4 compliant) and supports GSM/GPRS 850/900/1800/ 1900 MHz Quad-band frequency. Additional features such as integrated TCP/IP protocol stack (including UDP, SMTP, ICMP and FTP), serial multiplexer, remote AT commands and many more, extend the functionality of the board.

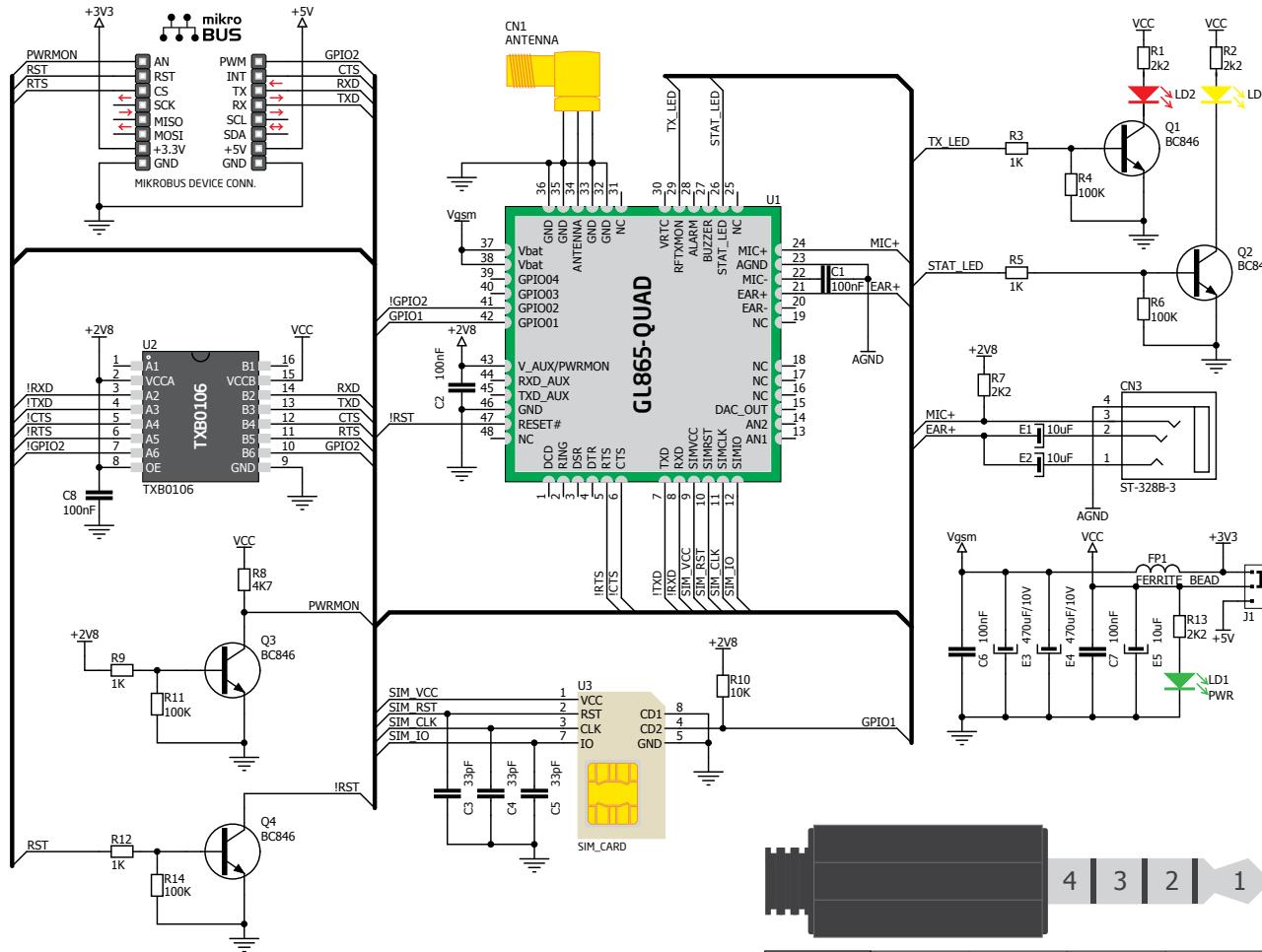
click™
BOARD
www.mikroe.com

GSM click Manual
ver. 1.01c



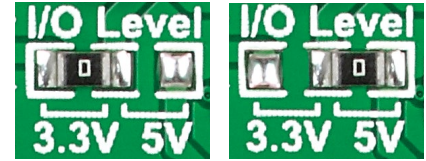
0 100000 026595

5. GSM click™ board schematic



Pin Number	1	2	3	4
Description	Left Audio	Right Audio	Microphone	Common/GND

6. SMD Jumper



There is one zero-ohm SMD jumper **J1** which is used to select whether 3.3V or 5V I/O voltage level is used. Jumper **J1** is soldered in 3.3V position by default.

7. Code examples

Once you have done all the necessary preparations, it's time to get your click™ board up and running. We have provided examples for mikroC™, mikroBasic™ and mikroPascal™ compilers on our **Libstock** website. Just download them and you are ready to start.



8. Support

MikroElektronika offers **free tech support** (www.mikroe.com/support) until the end of the product's lifetime, so if something goes wrong, we're ready and willing to help!



Mouser Electronics

Authorized Distributor

Click to View Pricing, Inventory, Delivery & Lifecycle Information:

[MikroElektronika:](#)

[MIKROE-1298](#)