

1

2

3

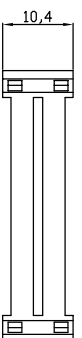
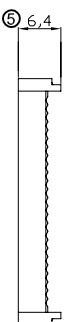
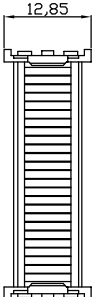
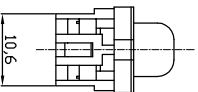
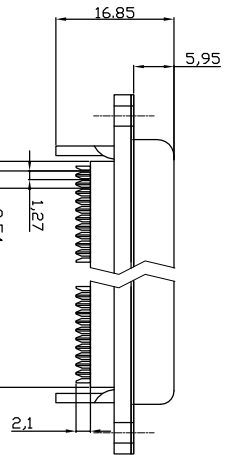
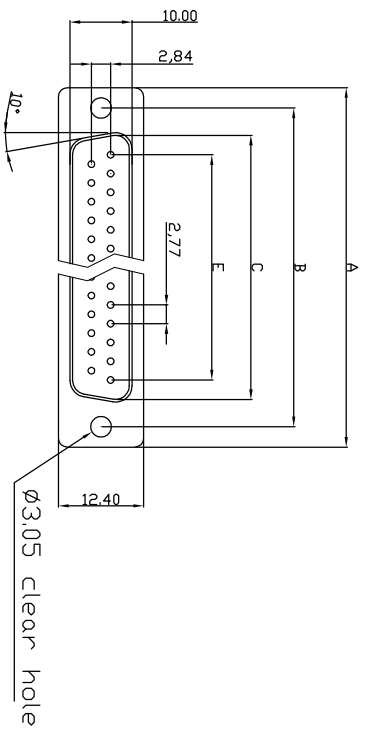
4

5

6

7

**Male**



**Cover**

**Product Specification**

**Material**

Insulator : Glass-Filled Thermoplastic PBT, UL94V-0  
Contact : Copper alloy

**Electrical**

Contact Resistance : 20 milliohms Max at 1 AMP DC.  
Insulation Resistance : 1000 megohms at 500 VDC  
Dielectric Withstanding Voltage : 1000 VAC/rms 60Hz for 1 minute  
Current Rating : 3 AMP  
Voltage Rating : 250 VAC/rms 60Hz  
② Wire Spec : 26 AWG-28 AWG  
Operating Temperature: -55°C ~ +105°C  
Order Code:

A-DXF xx LP1III/FP

① Contact style: S - Male  
② FP - Full-plastic style

No. of Contacts  
09 / 15 / 25 / 37  
Standard: Quality class III

**Strain Relief**

Dimensions						
Positions	A	B	C	E	F	
9	30.50	25.00	18.05	11.08	13.10	
15	39.00	33.32	26.35	19.39	20.70	
25	53.08	47.04	40.95	33.24	33.68	
37	69.25	63.50	56.75	49.86	50.30	

**With Insulator Support**

**ROHS compliant**

Unit: mm



File No.: E198287

Scale	Free TOLERANCE	⑤	Update the dimension	22.09.2015	Winnie		Date	Name
X.	±0.38	④	Update the dimension	27.02.2015	Winnie	Drawn	15.08.2012	Lucas
X.X	±0.25	③	Update the dimension	09.07.2014	Winnie	Approved	22.09.2015	Winnie
X.XX	±0.13	②	Update the wire specification	28.06.2013	Winnie			
DIM	TOL	①	Add the wire specification	06.03.2013	Winnie			
X.°	±3°							
X.X°	±1.0°	①	Drawn	15.08.2012	Lucas			
Angle	TOL	Id.	Modification	Date	Name			

Customer-No.

ASSMANN WSW-No.

A-DXF xx LP1III/FP

Drawing-No.

ASS 4890 CO

rev05

Replace

Sheet 1/2

1

2

3

4

5

6

7

33.68

E

D

C

B

A

H

F

1

2

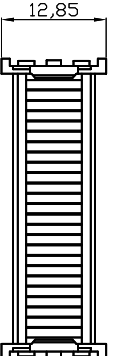
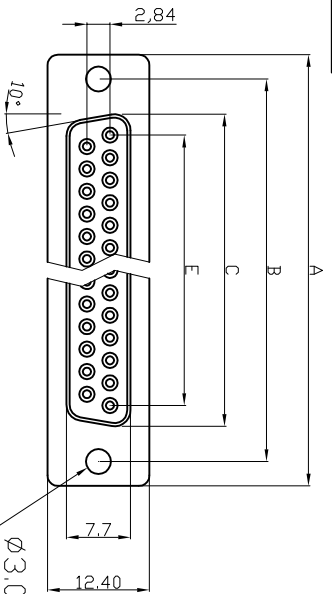
3

4

5

6

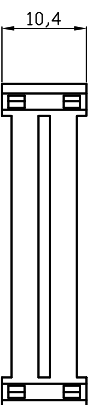
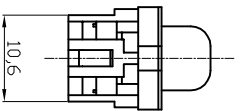
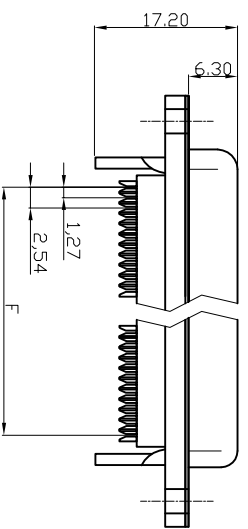
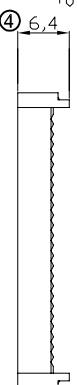
7

**Female****Product Specification****Material**

Insulator : Glass-Filled Thermoplastic PBT, UL 94V-0, Black  
 Contact : Copper alloy, Gold flash selective gold

**Electrical**

Contact Resistance : 20 milliohms Max at 1 AMP DC.  
 Insulation Resistance : 1000 megohms at 500 VDC  
 Dielectric Withstanding Voltage : 1000 VAC/rms 60Hz for 1 minute  
 Current Rating : 3 AMP  
 Voltage Rating : 250 VAC/rms 60Hz  
 Wire Spec : 26 AWG-28 AWG  
 Operating Temperature: -55°C+105°C

**Cover****Strain Relief**

Dimensions Positions	A	B	C	E	F
9	④ 30.50	24.99	④ 16.00	11.08	10.16
15	④ 39.00	33.30	④ 24.27	19.39	⑤ 20.70
25	53.05	47.04	④ 38.22	33.24	⑤ 33.68
37	69.40	63.50	⑤ 53.50	49.86	⑤ 50.30

**With Insulator Support****RoHS compliant**

Unit: mm



File No.: E198287

Scale	Free TOLERANCE	⑤ Update the dimension	22.09.2015	Winnie	Date	Name	Customer-No.
X.	±0.38	④ Update the dimension	27.02.2015	Winnie	15.08.2012	Lucas	ASSMANN WSW-No. <b>A-DXF XX LP111/FP</b>
X.X	±0.25	③ Update the dimension	09.07.2014	Winnie	22.09.2015	Winnie	
X.XX	±0.13	② Update the wire specification	28.06.2013	Winnie			ASSMANN WSW-No. <b>A-DXF XX LP111/FP</b>
DIM	TOL	① Add the wire specification	06.03.2013	Winnie			Drawing-No. <b>ASS 4890 CO</b>
X.°	±3°	① Drawn	15.08.2012	Lucas			<b>rev05</b>
X.X°	±1.0°						Replace
Angle	TOL	Id.	Modification	Date	Name		Sheet 2/2

**ASSMANN**  
 WSW/ components

1

2

3

4

5

6

7

H

G

F

E

D

C

B

A