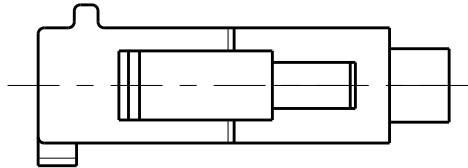
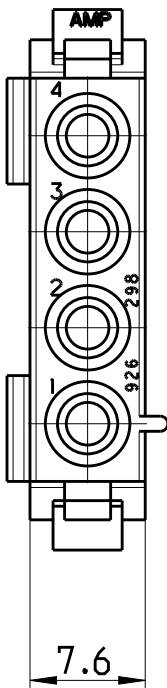
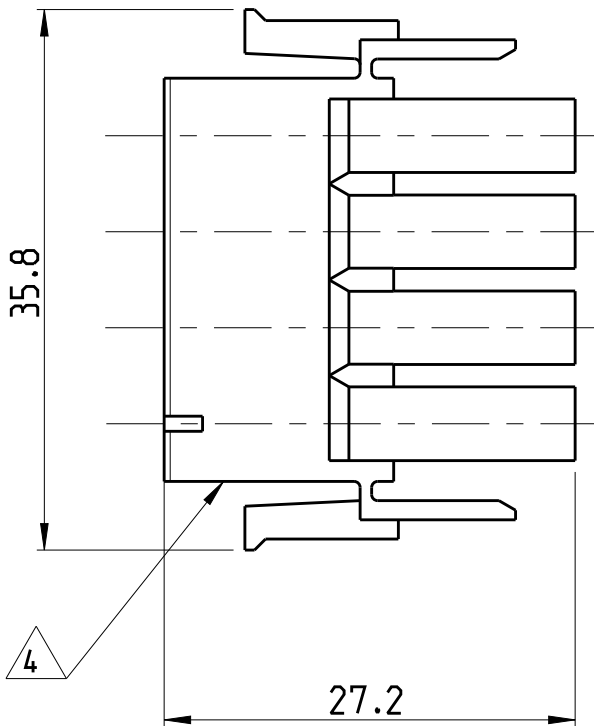
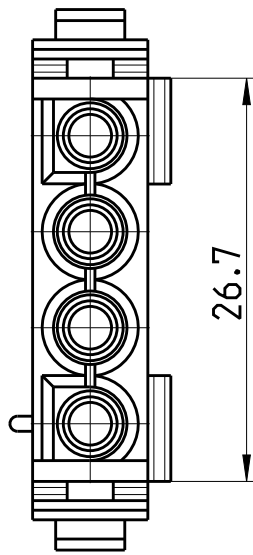




LOC	DIST	REVISIONS					
		P	LTR	DESCRIPTION	DATE	DWN	APVD
			F7	REVISED PER ECR-17-014951	16OCT2017	BDA	KR

- 1 NEUES MATERIAL (PHOSPHOR UND HALOGEN FREI)
- 2 MATERIAL CORRESPONDING TO THE REQUIREMENT OF IEC60335-1 (INCL. GWT 750 °C WITHOUT FLAME)
- 3 COLOR OF HOUSINGS MAY RANGE FROM CLEAR TO GREEN OR YELLOW DUE TO HYGROSCOPIC NATURE OF RESIN.HOWEVER IT DOESN'T AFFECT THE FORM, FIT AND FUNCTION OF THE PRODUCT.
- 4 CSA CERTIFICATION LOGO LOCATED AT LEAST ONE SIDE OF THE HOUSING APPROXIMATELY AS SHOWN.
- 5 DIMENSIONS SHOWN REPRESENT PRODUCT IN DRY, AS MOLDED, CONDITION. ADDITIONAL 2% GROWTH DUE TO SUBSEQUENT MOISTURE ABSORPTION MAY OCCUR AND SHOULD BE ACCOUNTED FOR.



926298-7	PA66 UL94 V-0 NATURAL	2
926298-6	PA6.6 UL94 V2 NATURAL	2
926298-5	PA 6.6 UL94 V2 NATURAL	
926298-4	PA6.6 UL94 V-0 weiß	
926298-3	PA6.6 UL94 V-0 NATURAL	
926298-2	PA6.6 UL94 V-0 SCHWARZ	1
926298-1	PA66 UL94 V-2 NATURAL	3
PART NUMBER MATERIAL		

THIS DRAWING IS A CONTROLLED DOCUMENT.		DWN KKB CHK KKB APVD RRP	10FEB2014 10FEB2014 10FEB2014	<div>TE Connectivity</div>															
DIMENSIONS:  mm		TOLERANCES UNLESS OTHERWISE SPECIFIED:		NAME															
		0 PLC ±		UNIVERSAL MATE-N-LOK 4 WAY PLUG -															
		1 PLC ±0.2																	
		2 PLC ±																	
		3 PLC ±																	
4 PLC ±		PRODUCT SPEC		SIZE				CAGE CODE		DRAWING NO		RESTRICTED TO							
ANGLES ±		108-1031																	
MATERIAL		APPLICATION SPEC		114-18011		A2		-		C=926298		-							
REFER TABLE		WEIGHT		-		CUSTOMER DRAWING		SCALE		2:1		SHEET		1 OF 1		REV		F7	
-		FINISH		-															

A

D

C

B

A

D

C

B

A

# Mouser Electronics

Authorized Distributor

Click to View Pricing, Inventory, Delivery & Lifecycle Information:

[TE Connectivity:](#)

[926298-6](#)