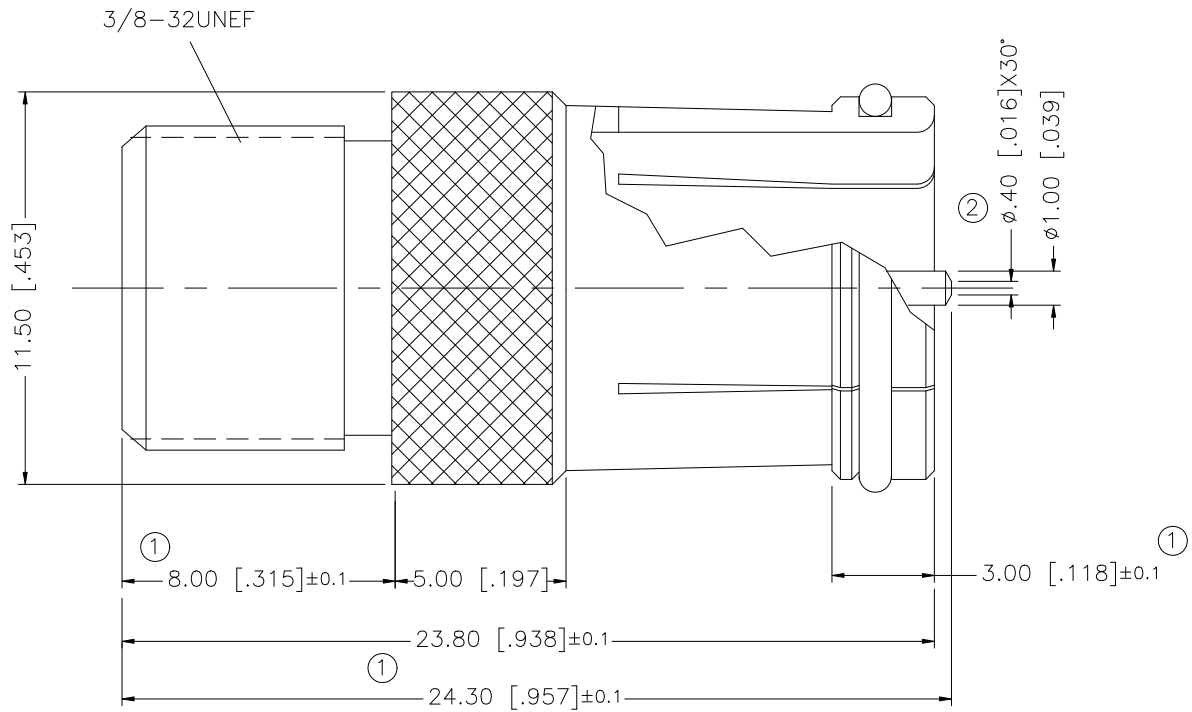


REV.	DATE	DESCRIPTION
NC	11/06/99	INITIAL RELEASE
A	12/27/05	UPDATE DRAWING FORMAT
B	04/20/06	REVISE BODY DIMENSIONS ①
C	07/12/07	ADD CHAMFER TO CONTACT PIN ②



8					UNLESS OTHERWISE SPECIFIED DIMENSIONS ARE IN MILLIMETERS. DIMENSIONS IN [ ] ARE IN INCHES AND FOR CUSTOMER REFERENCE ONLY.  UNLESS OTHERWISE SPECIFIED TOLERANCES FOR MILLIMETERS ARE: 0.5 – 8mm ± 0.20mm 8 – 30mm ± 0.40mm 30 – 120mm ± 0.50mm  UNLESS OTHERWISE SPECIFIED TOLERANCES FOR INCHES ARE: .020 – .315 = ± 0.007” .315 – 1.180 = ± 0.015” 1.180 – 4.724 = ± 0.020”	APPROVALS		DATE		<h1>Amphenol Connex</h1>												
7						DRAWN	G.R.S.		07/12/07													
6						CHECKED																
5						ISSUED				PART DESCRIPTION  F FEMALE TO QUICK DISCONNECT MALE ADAPTER												
4	CONTACT PIN	BRASS	BRIGHT TIN	1		SHEET		1 OF 1														
3	INSULATOR	P.P.	NATURAL	1	PART NO.  222157																	
2	INSULATOR	DELTRIN	NATURAL	1																		
1	BODY	BRASS	NICKEL	1	CAD FILE  C:/222/222157.DWG						DWG. NO. 222157.DWG						REV. C		SIZE A		SCALE NA	
DESCRIPTION		MATERIAL	FINISH	QTY																		
					DO NOT SCALE DRAWING																	

# Mouser Electronics

Authorized Distributor

Click to View Pricing, Inventory, Delivery & Lifecycle Information:

[Amphenol:](#)

[222157](#)