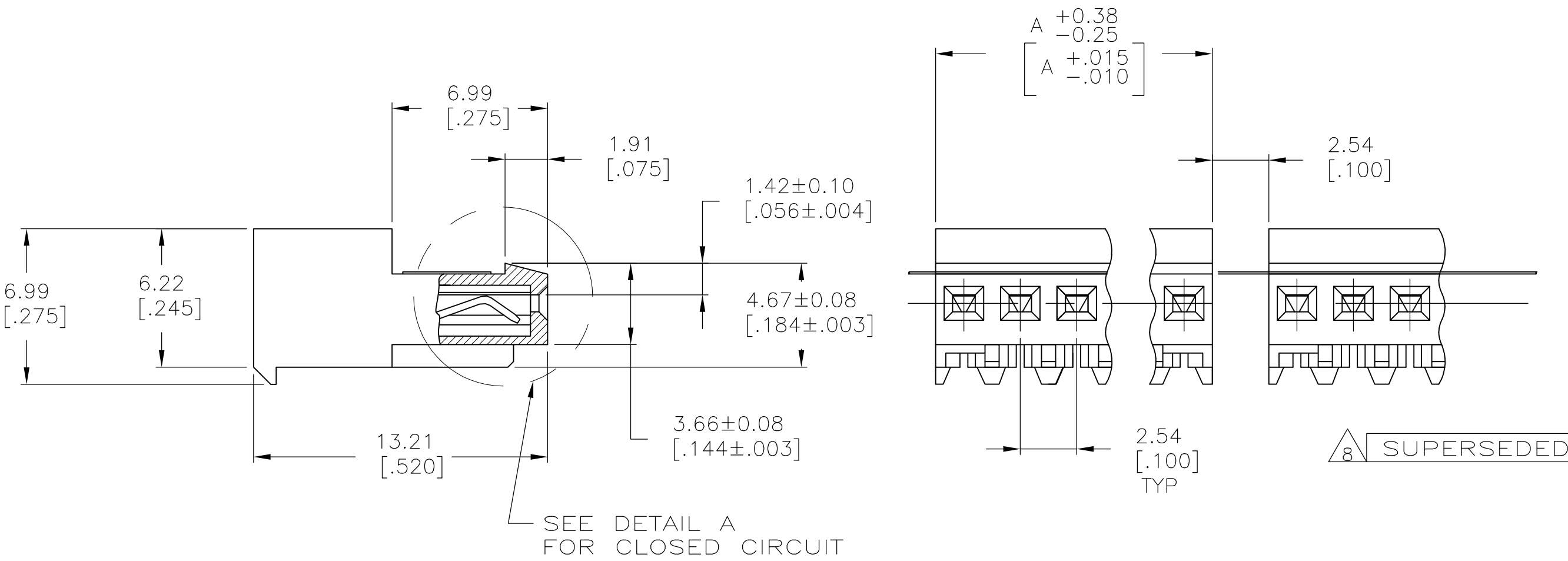


- 1 MATERIAL: CONNECTOR – NYLON UL94V-2 (ORANGE).  
CONTACTS – 0.30[.012] THICK COPPER ALLOY  
MATTE WHISKER MITIGATED TIN  
0.00203[.000080] MIN THICKNESS  
OVER NICKEL UNDERPLATE OR BRIGHT  
TIN-LEAD 93/7 0.00203[.000080] MIN  
THICKNESS. SEE FINISH COLUMN FOR  
PLATING TYPE.
2. CONTACTS ACCEPT 28 AWG WIRE WITH 1.52[.060] MAX  
INSULATION DIAMETER.
3. CONTACTS MUST ACCEPT 0.64±0.03[.025±.001]  
POST AND REMAIN LOCKED IN POSITION.
- 4 IDENTIFICATION NUMBER FOR LAST CIRCUIT MAY  
NOT APPEAR ON ALL ASSEMBLIES.
5. DIMENSIONS IN BRACKETS ARE IN INCHES.
6. HOUSING FEATURES ARE: CLOSED END WITH LOCKING RAMP.
- 7 DETAIL A SHOWS CIRCUIT NO. 5 & 7 MOLDED CLOSED.
- 8 OBSOLETE PARTS



TIN			
	22.86 [.900]	9	3-644482-9
TIN-LEAD			
	22.86 [.900]	9	-644482-9-
FINISH	DIM A	NO. OF CIRCUITS	PART NO.

THIS DRAWING IS A CONTROLLED DOCUMENT.

DIMENSIONS:  
mm [INCHES]

MATERIAL  
1

TOLERANCES UNLESS  
OTHERWISE SPECIFIED:

0 PLC ± -  
1 PLC ± -  
2 PLC ± -  
3 PLC ± 0.13 [.005]  
4 PLC ± -  
ANGLES ± -  
FINISH 1

DWN  
B. LEWIS  
CHK  
R. SWING  
APVD  
M. MILLER  
PRODUCT SPEC  
108-1050  
APPLICATION SPEC  
114-1019  
WEIGHT  
CUSTOMER DRAWING

22APR91  
22APR91  
22APR91

Tyco Electronics Corporation  
Harrisburg, Pa 17105-3608

NAME  
MTA 100 CONNECTOR ASSEMBLY,  
28 AWG, NO.5&7 CIRCUIT CLOSED,  
TAPE MOUNTED,SPECIAL

SIZE  
A2

CAGE CODE  
00779

DRAWING NO  
C=644482

RESTRICTED TO  
-

SCALE  
5:1

SHEET  
1

OF  
1

REV  
E

# Mouser Electronics

Authorized Distributor

Click to View Pricing, Inventory, Delivery & Lifecycle Information:

[TE Connectivity:](#)

[644482-9](#)