

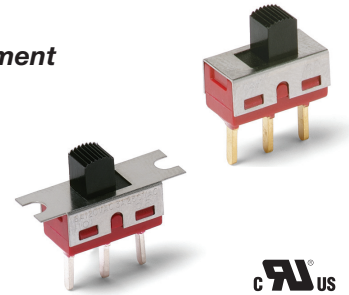
# 1000 Series Miniature Slide Switches

## Features/Benefits

- Variety of actuators and terminations
- Panel mount tabs available
- Epoxy terminal seal—compatible with bottom-wash cleaning
- RoHS compliant

## Typical Applications

- Test & measurement equipment
- Telecommunications
- Computer & peripherals



Models Available

## Specifications

CONTACT RATING: B contact material: 0.4 VA max. @ 20 V AC or DC max. Q contact material: 6 AMPS @ 120 V AC or 28 V DC, 3 AMPS @ 250 V AC. See page I-16 for additional ratings.

ELECTRICAL LIFE: 100,000 make-and-break cycles at full load on models with B, K or P contact material; 40,000 cycles on models with G, Q, L, M, S or R contact material.

CONTACT RESISTANCE: Below 10 m Ω typ. initial @ 2-4 V DC, 100 mA, for both silver and gold plated contacts.

INSULATION RESISTANCE: 10<sup>9</sup> Ω min.

DIELECTRIC STRENGTH: 1,000 Vrms min. @ sea level.

OPERATING TEMPERATURE: -30°C to 65°C

SOLDERABILITY: Per MIL-STD-202F method 208D, or EIA RS-186E method 9 (1 hour steam aging).

## Materials

CASE: diallyl phthalate (DAP), (UL 94V-0).

ACTUATOR: Nylon, black, standard.

HOUSING: Stainless steel.

SWITCH SUPPORT: Brass or steel, matte-tin plated.

END CONTACTS: B contact material: Copper alloy, with gold plate over nickel plate. Q contact material: Coin silver, silver plated. See page I-16 for additional contact materials.

CENTER CONTACT & ALL TERMINALS: B contact material: Copper alloy, with gold plate over nickel plate. Q contact material: Copper alloy, silver plated. See page I-16 for additional contact materials.

TERMINAL SEAL: Epoxy. Refer to Soldering and Cleaning in Technical Data chapter

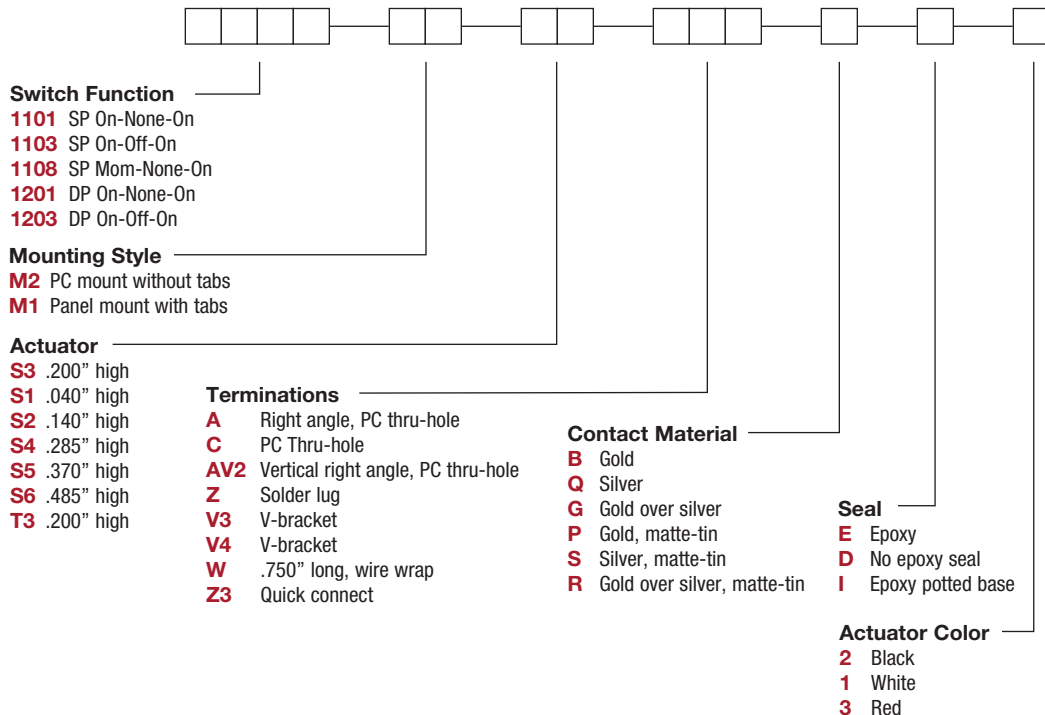
**NOTE:** Any models supplied with Q, B, G, P, S or R contact material are RoHS compliant.

**NOTE:** Specifications and materials listed above are for switches with standard options.

For information on specific and custom switches, consult Customer Service Center.

## Build-A-Switch

To order, simply select desired option from each category and place in the appropriate box. Available options are shown and described on pages I-12 through I-16. For additional options not shown in catalog, consult Customer Service Center. All models have epoxy terminal seal and are compatible with all “bottom-wash” PCB cleaning methods.



# 1000 Series Miniature Slide Switches

## SWITCH FUNCTION



NO. POLES	MODEL NO.	SWITCH FUNCTION			CONNECTED TERMINALS			SCHEMATIC
		POS. 1	POS. 2	POS. 3	POS. 1	POS. 2	POS. 3	
SP	1101	ON	NONE	ON	1-2	N/A	2-3	
	1103	ON	OFF	ON		OPEN		
	1108	MOM.	NONE	ON		N/A		
<p><b>SPDT</b></p> <p>Part number shown: 1101M2S3CQE2</p>								
DP	1201	ON	NONE	ON	2-1,5-4	OPEN	2-3,5-6	
	1203	ON	OFF	ON				
<p><b>DPDT</b></p> <p>Part number shown: 1201M2S3CQE2</p> <p>Terminal Nos. For Reference Only</p>								

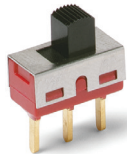
MOM. = Momentary

All models with all options when ordered with G, Q, S or R contact material.

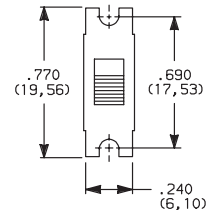
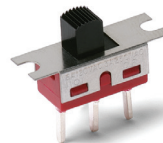
## MOUNTING STYLE



### M2 PC MOUNTING WITHOUT TABS



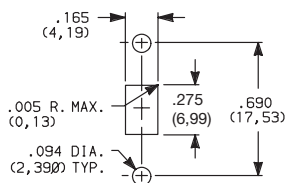
### M1 PANEL MOUNTING WITH TABS



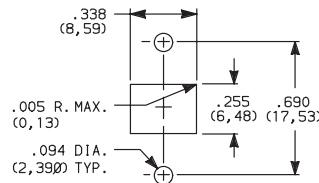
**NOTE:** Available with A, AV2, C, V3, V4, W terminations only.

**NOTE:** Available with C, W, Z, Z3 terminations only. No mounting hardware supplied.

### PANEL MOUNTING



All actuators except T3.  
Single pole



For T3 actuator only.  
Double pole



Third Angle  
Projection



19 dec 18

Dimensions are shown: Inch (mm)  
Specifications and dimensions subject to change

Slide

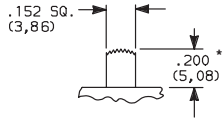
# 1000 Series Miniature Slide Switches

## ACTUATOR

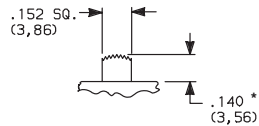
ACTUATOR COLOR



**S3** .200" HIGH

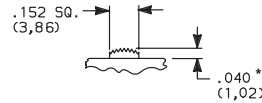


**S2** .140" HIGH



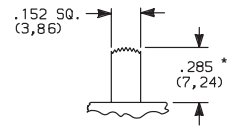
110X models only.

**S1** .040" HIGH

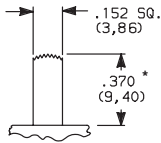


120X models only.

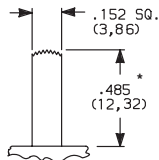
**S4** .285" HIGH



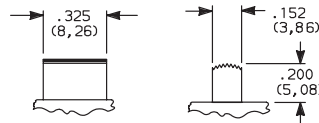
**S5** .370" HIGH



**S6** .485" HIGH



**T3** .200" HIGH



120X models only.

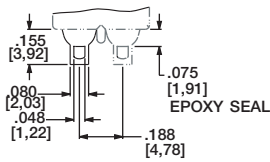
OPTION CODE	ACTUATOR COLOR
<b>2</b>	BLACK
<b>1</b>	WHITE
<b>3</b>	RED
<b>7</b>	BLUE
<b>9</b>	GRAY

Other colors available, consult Customer Service Center.

\* Subtract .014 (0,36) from actuator height, all models with A, AV2 - 2 pole, V3, V4 terminations.

## TERMINATIONS

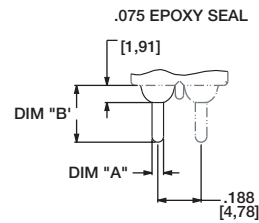
**Z** SOLDER LUG



Not available with P, S or R contact materials.

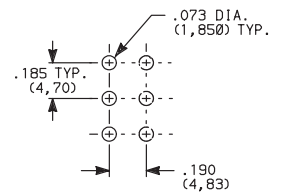
**SPDT & DPDT**

**C** PC THRU-HOLE



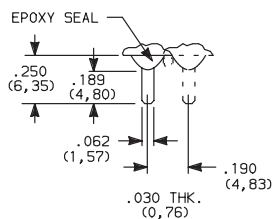
OPTION	DIM "A"	DIM "B"
C	.050 [0,76]	.250 [6,35]

PC MOUNTING



**SPDT & DPDT**

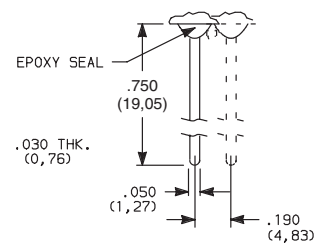
**Z3** QUICK CONNECT



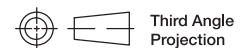
Not available with P, S or R contact materials. Mating quick connector available; order part number 530100000, page I-16.

**SPDT & DPDT**

**W** WIRE WRAP



**SPDT & DPDT**



Third Angle Projection

Dimensions are shown: Inches (mm)  
Specifications and dimensions subject to change

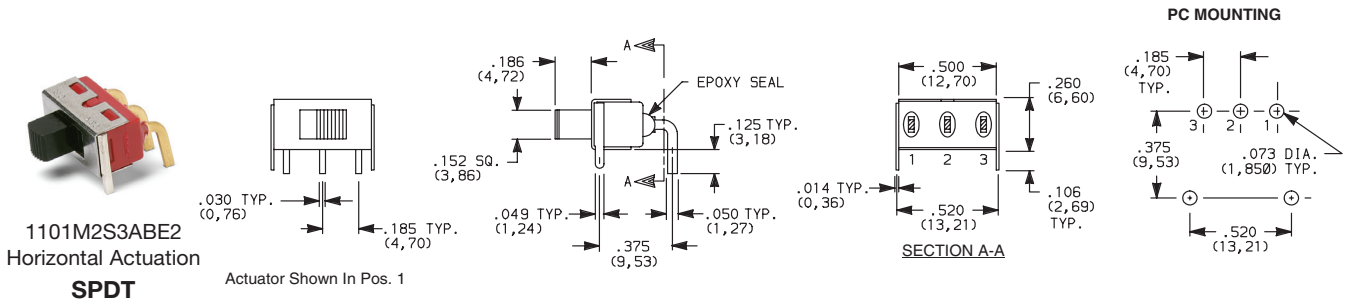


Slide

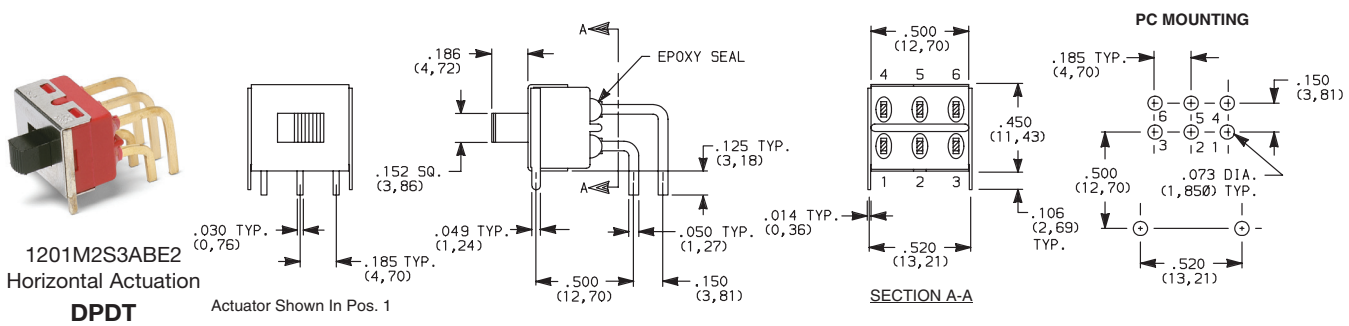
# 1000 Series Miniature Slide Switches

## TERMINATIONS

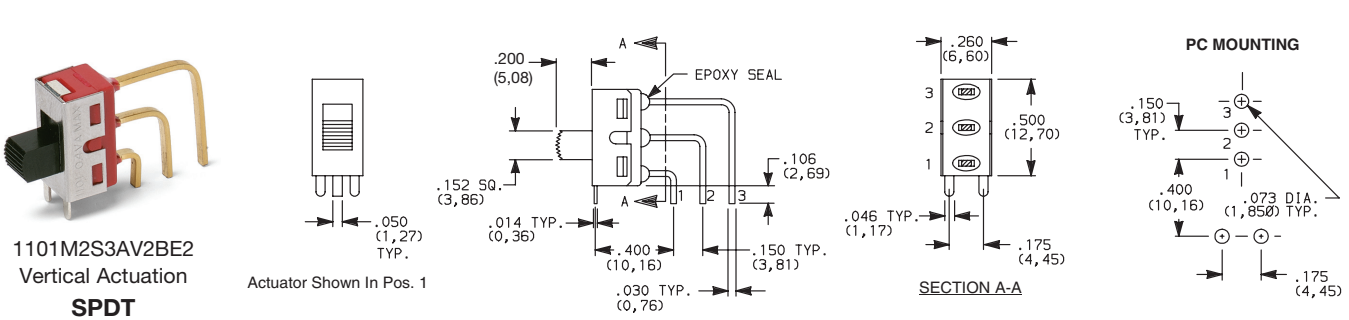
### A RIGHT ANGLE, PC THRU-HOLE



### A RIGHT ANGLE, PC THRU-HOLE



### AV2 VERTICAL RIGHT ANGLE, PC THRU-HOLE, .150" PITCH



Dimensions are shown: Inch (mm)  
Specifications and dimensions subject to change



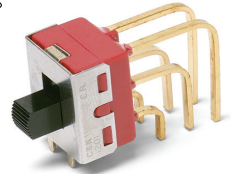
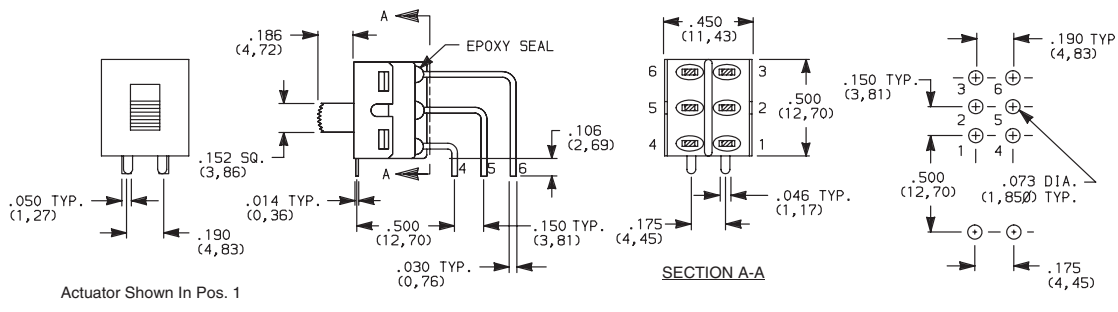
19 dec 18

Slide

# 1000 Series Miniature Slide Switches

## TERMINATIONS

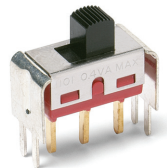
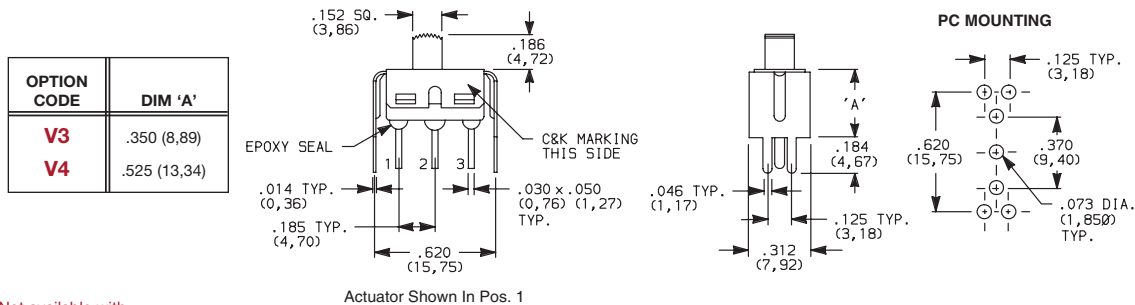
**AV2** VERTICAL RIGHT ANGLE, PC THRU-HOLE,  
.150" PITCH



1201M2S3AV2BE2  
Vertical Actuation  
DPDT

Not available with M1 mounting style, I seal option.  
Terminal bend radii and lead-in manufacturing option.

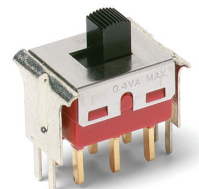
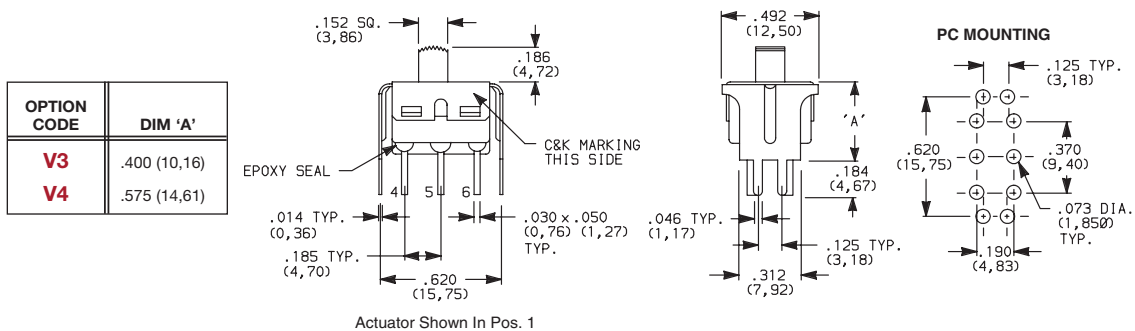
**V3, V4** VERTICAL MOUNT,  
V-BRACKET



1101M2S3\_BE2  
SPDT

Not available with  
M1 mounting style and I seal.

**V3, V4** VERTICAL MOUNT,  
V-BRACKET



1201M2S3\_BE2  
DPDT

Not available with  
M1 mounting style and I seal.



Dimensions are shown: Inches (mm)  
Specifications and dimensions subject to change

# 1000 Series Miniature Slide Switches

## CONTACT MATERIAL

OPTION CODE	CONTACT MATERIAL	TERMINAL PLATING	RATINGS	
<b>B</b>	GOLD <sup>1</sup>	GOLD <sup>3</sup>	LOW LEVEL/ DRY CIRCUIT	0.4 VA MAX. @ 20 V AC OR DC MAX.
<b>P</b>		MATTE-TIN <sup>6</sup>		
<b>Q</b>	SILVER <sup>4,5</sup>	SILVER <sup>4</sup>	POWER	6 AMPS @ 120 V AC OR 28 V DC; 3 AMPS @ 250 V AC.
<b>S</b>		MATTE-TIN <sup>6</sup>		
<b>G</b>	GOLD OVER SILVER <sup>2,3</sup>	GOLD <sup>3</sup>	LOW LEVEL/DRY CIRCUIT OR POWER	0.4 VA MAX @ 20 V AC OR DC MAX OR 6 AMPS @ 120 V AC OR 0.4 MAX. 28 V DC; 3 AMPS @ 250 V AC.
<b>R</b>		MATTE-TIN <sup>6</sup>		

\* Note: See Technical Data section of this catalog for RoHS compliant and compatible definitions and specifications.

- 1 CONTACTS & TERMINALS: Copper alloy, with gold plate over nickel plate.
- 2 END CONTACTS: Coin silver, with gold plate over nickel plate.
- 3 CENTER CONTACTS & ALL TERMINALS: Copper alloy, with gold plate over nickel plate.
- 4 END CONTACTS: Coin silver, silver plated.
- 5 CENTER CONTACT & ALL TERMINALS: Copper alloy, silver plated.
- 6 TERMINALS: Copper alloy, with matte-tin over nickel plate.

All models **CRUS** with all options when ordered with G, Q, S or R contact material.

B contact material standard with all terminations except C, Z, Z3.

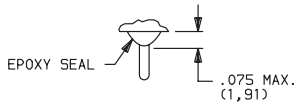
Q contact material standard with C, Z, Z3 terminations.

**P, S or R contact materials not available with Z, Z3 terminations.**

**NOTE:** Any models supplied with Q, B, G, P, S or R contact material are RoHS compliant.

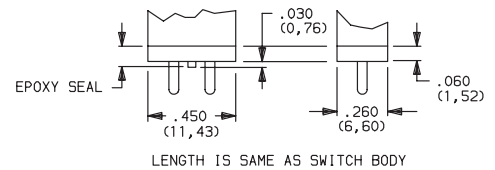
## SEAL

### E EPOXY SEAL



### D NO EPOXY SEAL

### I EPOXY POTTED BASE



**NOTE:** Available with C, W, W3, Z, Z3 terminations only.

## AVAILABLE HARDWARE

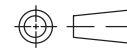
Fits Z3 Termination  
female connector



PART NO.

**530100000**

Available in loose pieces.



Third Angle  
Projection

Dimensions are shown: Inch (mm)  
Specifications and dimensions subject to change

Slide

# Mouser Electronics

Authorized Distributor

Click to View Pricing, Inventory, Delivery & Lifecycle Information:

## C&K Switches:

[1103M2S3CBE2](#) [1103M2S3AV2BE2](#) [1108M2S3CBE2](#) [1101M2S3AQE2](#) [1103M1S3ZQE2](#) [1101M2S3ABE2](#)  
[1101M2S4V3QE2](#) [1101M2S3CQE2](#) [1101M2S5V3QE2](#) [1101M2S3AV2QE2](#) [1101M2S3V3QE2](#) [1101M1S3Z3QE2](#)  
[1101M1S3ZBE2](#) [1101M1S2ZBE2](#) [1201M2S3CBE2](#) [1101M2S4AQE2](#) [1201M2S3CQE2](#) [1101M1S3ZQE2](#)  
[1101M2S4CQE2](#) [1201M2S1CKE2](#) [1101M2S3CBE2](#) [1201M2S3V3BE2](#) [1101M2S3AV2BE2](#) [1201M2S3AV2BE2](#)  
[1101M1S2ZQE2](#) [1101M1S3CQE2](#) [1101M1S3ZGE2](#) [1101M2S2ABE2](#) [1101M2S2V3GE2](#) [1101M2S3AV2GE2](#)  
[1101M2S3CGE2](#) [1101M2S3V3BE2](#) [1101M2S3V4BE2](#) [1101M2S3V4QE2](#) [1101M2S4ABE2](#) [1101M2S4AKE2](#)  
[1101M2S5AQE2](#) [1101M2S5AV2BE2](#) [1101M2S5CBE2](#) [1101M2S5CQE2](#) [1101M2S5V3BE2](#) [1101M2S6V4BE2](#)  
[1103M1S3CQE2](#) [1103M2S3AQE2](#) [1103M2S3CQE2](#) [1108M2S3CGE2](#) [1201M1S3CME3](#) [1201M1S3ZQE2](#)  
[1201M2S1CQE2](#) [1201M2S3ABE2](#) [1201M2S3AQE2](#) [1201M2S3AV2QE2](#) [1201M2S3V3QE2](#) [1203M1S3ZQE2](#)  
[1203M2S3AQE3](#) [1203M2S3AV2GE1](#) [1203M2S3AV2QE2](#) [1203M2S3CQE2](#) [1203M2S3V3BE2](#) [1103M2S3CGE2](#)  
[1201M2S4AV2BE2](#) [120100602](#) [1101M2S2AV2QE2](#) [1103M2S2AQE2](#) [1101M2S4CBE2](#) [1101M2S4V3BE2](#)  
[1201M2S3CRE2](#) [1103M2S3ABE2](#) [1103M2S6CBE2](#) [1201M1T3ZQE2](#) [1101M2S4AV2BE2](#) [1203M1S3CQE2](#)  
[1201M2S4V3BE2](#) [1108M2S4V3QE2](#) [1101M2S5CSE2](#) [1201M2S1CBE2](#) [1201M1S3ZBE2](#) [1103M2S5AV2BE2](#)  
[1201M2S3WGE2](#) [1103M2S5ABE2](#) [1101M2S3WBE2](#) [1101M2S3AV2BE3](#) [1108M1S3ZQE2](#) [1101M1S3ZQE3](#)  
[1101M2S3CGE1](#) [1201M2S6AGE2](#) [1101M2S3CQE3](#) [1108M2S3AV2BE2](#) [1101M2S3ASE2](#) [1101M2S5V4QE3](#)  
[1101M1S4ZQE2](#) [1201M2S4ABE2](#) [1101M2S4V4QE2](#) [1101M2S3CQI2](#) [1103M2S6V4BE2](#) [1101M2S3V3SE2](#)  
[1101M2S2CBE2](#) [1103M2S4ABE2](#) [1201M2S1CQE1](#) [1201M2S3AV2GE2](#)