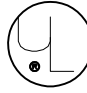





| | |
|--------------------------------|---|
| AMP WIRE RANGE |  E13288 Listed |
| 22-16 AWG SOLID OR STRANDED | 22-16 AWG SOLID OR STRANDED |

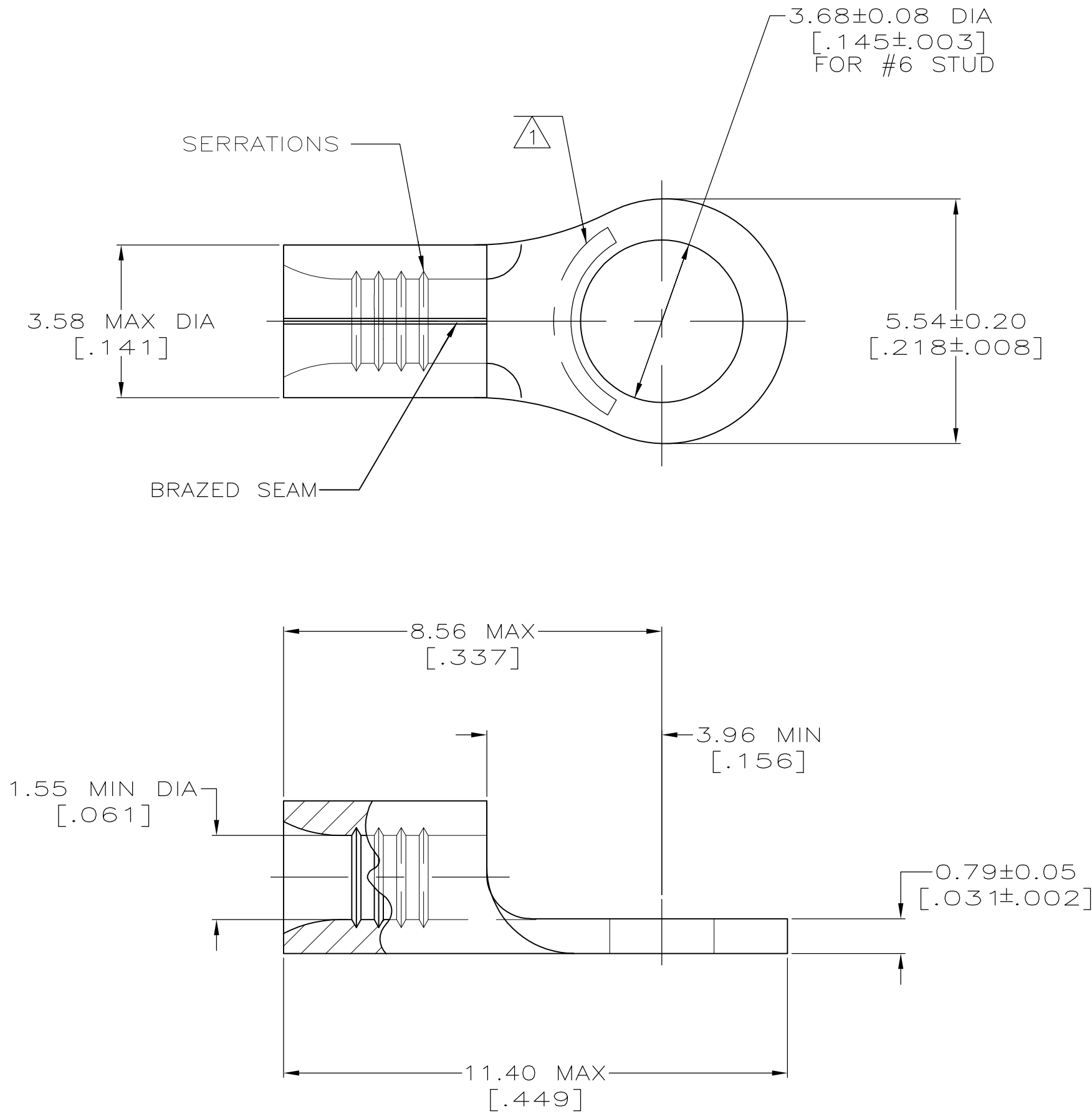
| | |
|--|---|
|  LR7189 Certified | MILITARY P/N AND CLASS |
| 22-16 AWG SOLID OR STRANDED | NOT APPLICABLE |

- 1

STAMP AMP 22-18* APPROX AS SHOWN
22-16 TERMINALS ARE STAMPED 22-18 IN
ACCORDANCE WITH MILITARY SPECIFICATION
MIL-T-7928; COMMERCIAL WIRE RANGE IS 22-16
- 2


0.00254 [.000100] MIN TIN PER ASTM B-545
- 3

CLEANED, UNPLATED



| | | |
|---|--|--|
| AMP INCORPORATED CUSTOMER SERVICE SYSTEMS | | MAX RECOMMENDED OPERATING TEMPERATURE: 170° C MAX |
| FOR ADDITIONAL PRODUCT INFORMATION OR COPIES OF DRAWINGS AND TECHNICAL DOCUMENTS | PRODUCT INFORMATION CENTER 1-800-522-6752 | VOLTAGE RATING: NOT APPLICABLE |
| FOR APPLICATION TOOLING INFORMATION | TOOLING ASSISTANCE CENTER 1-800-722-1111 | WIRE CROSS SECTIONAL AREA RANGE: 0.26-1.65mm ² [509-3,260] CIR MILS SOLID OR STRANDED |
| FOR ORDER ENTRY | 1-800-526-5142 | THIS DRAWING IS A CONTROLLED DOCUMENT FOR AMP INCORPORATED. IT IS SUBJECT TO CHANGE AND THE CONTROLLING ENGINEERING ORGANIZATION SHOULD BE CONTACTED FOR THE LATEST REVISION. |

| | | | |
|--------|----------|------------------|-----------|
| 3 | - | LOOSE PIECE | 34105-3 |
| 2 | 100 | LOOSE PIECE, BOX | 8-34105-1 |
| 2 | 5000 | ON TAPE | 2-34105-2 |
| 2 | - | LOOSE PIECE | 34105 |
| FINISH | QUANTITY | PACKAGING TYPE | PART NO |

| | | | | |
|---|--|--------------------------------|---|--------------------|
| THIS DRAWING IS A CONTROLLED DOCUMENT. | | DWN TA BRINKMAN 3-10-93 |  TE Connectivity | |
| | | CHK DA PATTERSON 3-10-93 | | |
| | | APVD JL MECKLEY 3-10-93 | NAME TERMINAL, RING TONGUE, SOLISTRAND | |
| DIMENSIONS: mm [INCHES] | | PRODUCT SPEC — | SIZE A2 | |
| TOLERANCES UNLESS OTHERWISE SPECIFIED: | | APPLICATION SPEC — | CAGE CODE 00779 | |
| 0 PLC ± - 1 PLC ± - 2 PLC ± - 3 PLC ± - 4 PLC ± - ANGLES ± ± - FINISH | | WEIGHT — | DRAWING NO G-34105 | |
| MATERIAL COPPER PER | | CUSTOMER DRAWING | | RESTRICTED TO — |
| | | SCALE 10:1 | | SHEET 1 of 1 |
| | | | | REV F1 |

Mouser Electronics

Authorized Distributor

Click to View Pricing, Inventory, Delivery & Lifecycle Information:

[TE Connectivity:](#)

[34105-3](#)