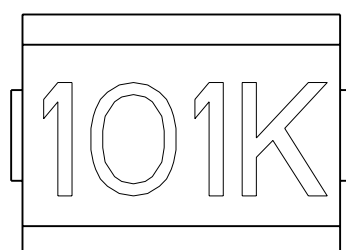
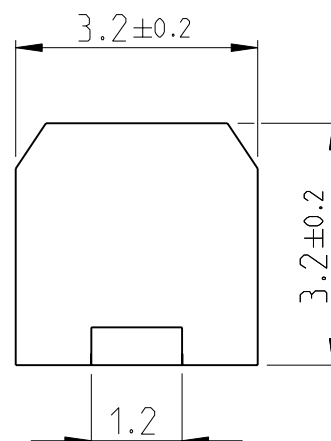
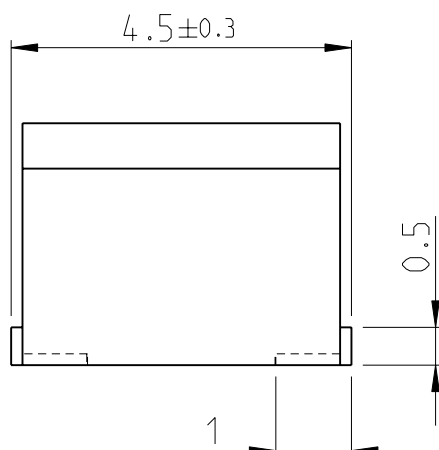
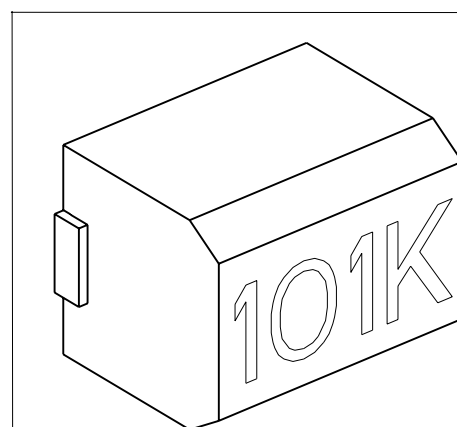


LOC	DIST	REVISIONS					
		P	LTR	DESCRIPTION	DATE	DWN	APVD
E	B		BB1	REVISED PER ECO-11-005150	29MAR2011	RK	HMR

1. FOR FURTHER INFORMATION SEE DATA SHEET FOR 3613C SERIES-MOULDED CHIP INDUCTOR 18:12
2. FROM SEPTEMBER 2010 MARKING CHANGED TO LASER CARVED BLACK FROM WHITE INK TO IMPROVE EFFICIENCY AND PRODUCTION TIME.



RoHS Compliant



2008


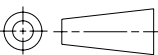
RELEASED FOR PUBLICATION

ALL RIGHTS RESERVED.

THIS DRAWING IS UNPUBLISHED.

BY -

© COPYRIGHT 2008

DIMENSIONS:		DWN	13-NOV-08	MATERIAL		FINISH							
mm		SUBHASH.M	13-NOV-08	<div>TE Connectivity</div>									
TOLERANCES UNLESS OTHERWISE SPECIFIED:		CHK	13-NOV-08										
		PRAKASH.S	13-NOV-08										
0 PLC ±0.2 1 PLC ±0.1 2 PLC ±- 3 PLC ±- 4 PLC ±- ANGLES ±5° 		APVD	13-NOV-08	NAME MOULDED CHIP INDUCTOR 18:12 SERIES 3613C									
		STEPHEN.P											
		PRODUCT SPEC		SIZECAGE CODEDRAWING NORESTRICTED TO									
		-						A 400779C- 1624094-					
		APPLICATION SPEC											
-													
WEIGHT		CUSTOMER DRAWING				SCALE	10:1	SHEET	1	OF	1	REV	BB1

Mouser Electronics

Authorized Distributor

Click to View Pricing, Inventory, Delivery & Lifecycle Information:

[TE Connectivity:](#)

[3613C10UH](#)