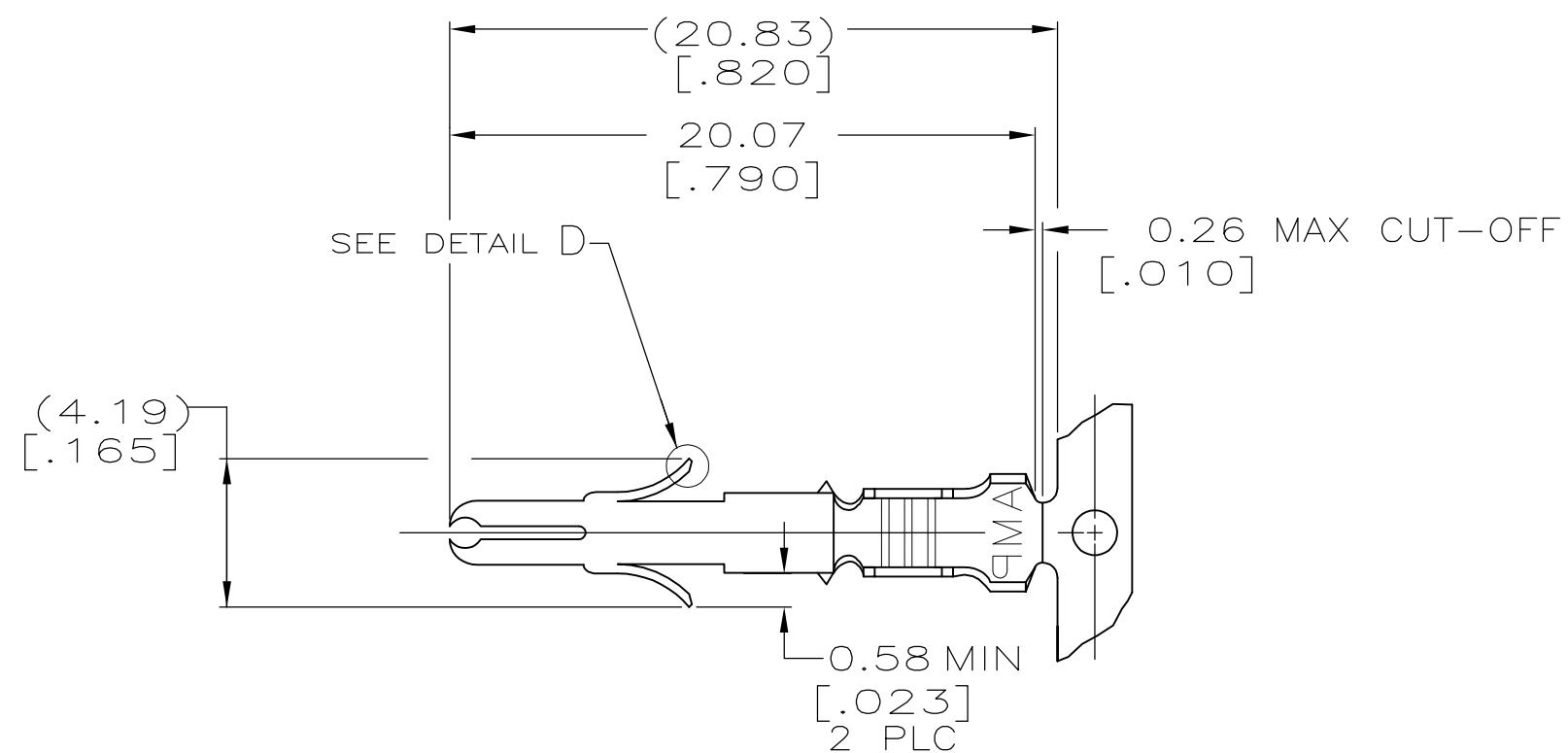
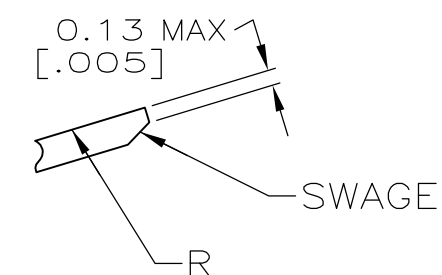
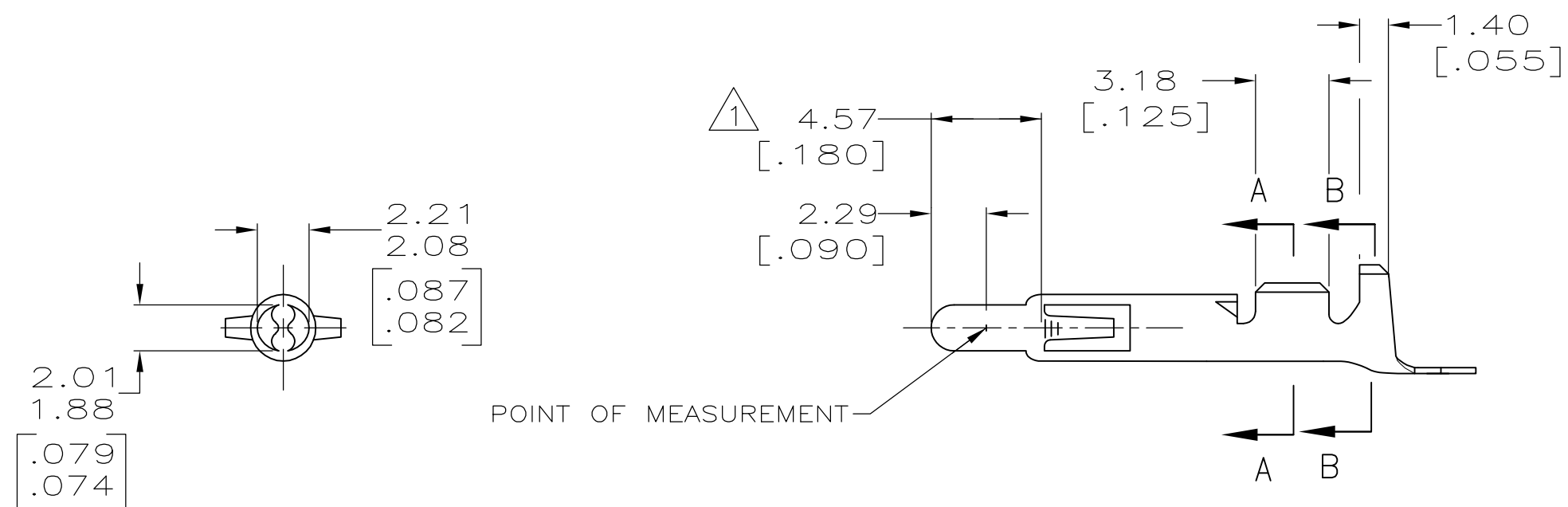


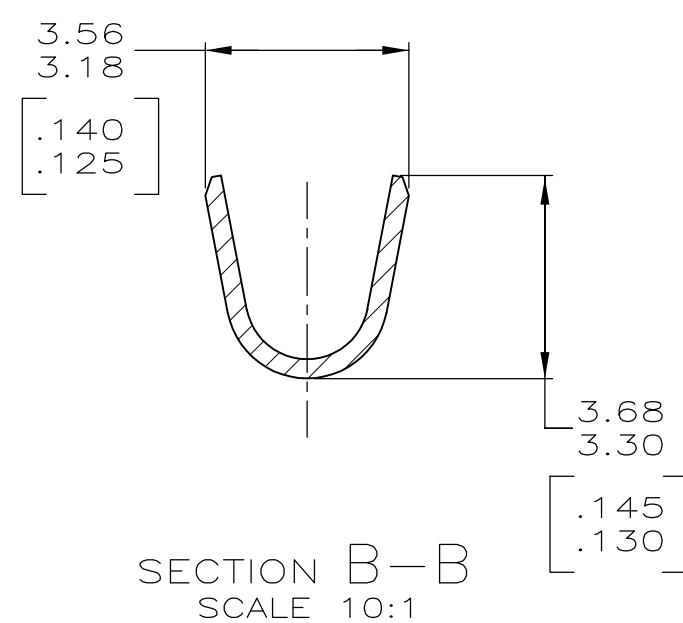
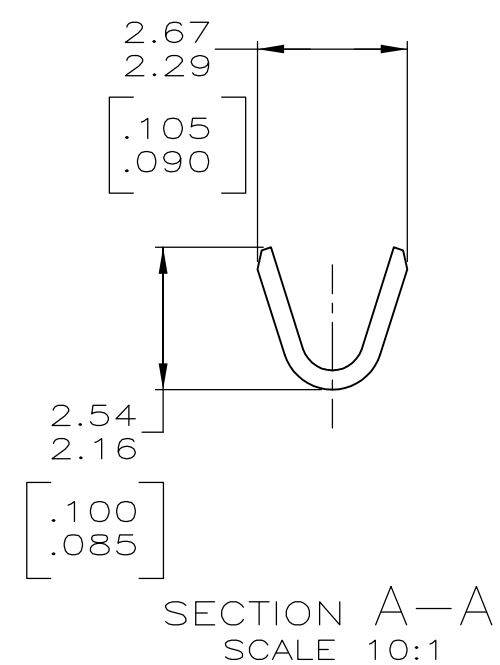
LOC	DIST	REVISIONS					
CM	00	P	LTR	DESCRIPTION	DATE	DWN	APVD
			AB	REVISED PER ECR-12-013323	09AUG12	KH	TM








- 1 PLATED WITH 0.00076 [.000030] GOLD, OVER 0.00127 [.000050] NICKEL UNDERPLATE.
- 2 PLATED INTERNALLY WITH 0.00076 [.000030] GOLD.
- 3 WIRE RANGE 0.2–0.75 mm<sup>2</sup> (24–18 AWG).
- 4 INSULATION RANGE 1.02–2.54 [.040 –.100] DIA.



DETAIL A  
SCALE 20:1



350706-7	0.30[.012] BRASS	GOLD 	350699-7
-	0.30[.012] PH BRZ	PRE-TIN	350699-3
350706-2	0.30[.012] BRASS	GOLD  	350699-2
350706-1	0.30[.012] BRASS	PRE-TIN	350699-1
LOOSE PIECE (REF)	MATERIAL	FINISH	PART NUMBER

THIS DRAWING IS A CONTROLLED DOCUMENT.		DWN K. WHITAKER 25-FEB-2002 CHK S. RIDGILL 25-FEB-2002 APVD S. RIDGILL 25-FEB-2002		 TE Connectivity	
DIMENSIONS: mm [INCHES]		TOLERANCES UNLESS OTHERWISE SPECIFIED: 0 PLC ± - 1 PLC ± - 2 PLC ± 0.25[.010] 3 PLC ± - 4 PLC ± - ANGLES ± ± -		NAME SPLIT PIN, UNIVERSAL MATE-N-LOK™	
		PRODUCT SPEC - APPLICATION SPEC -		SIZE A2	
MATERIAL SEE TABLE		FINISH SEE TABLE		CAGE CODE 00779	
		WEIGHT -		DRAWING NO C-350699	
CUSTOMER DRAWING				SCALE 4:1	
				SHEET 1 OF 1	
				REV AR	

# Mouser Electronics

Authorized Distributor

Click to View Pricing, Inventory, Delivery & Lifecycle Information:

[TE Connectivity:](#)

[350699-1 \(Mouser Reel\)](#) [350699-1 \(Cut Strip\)](#)