

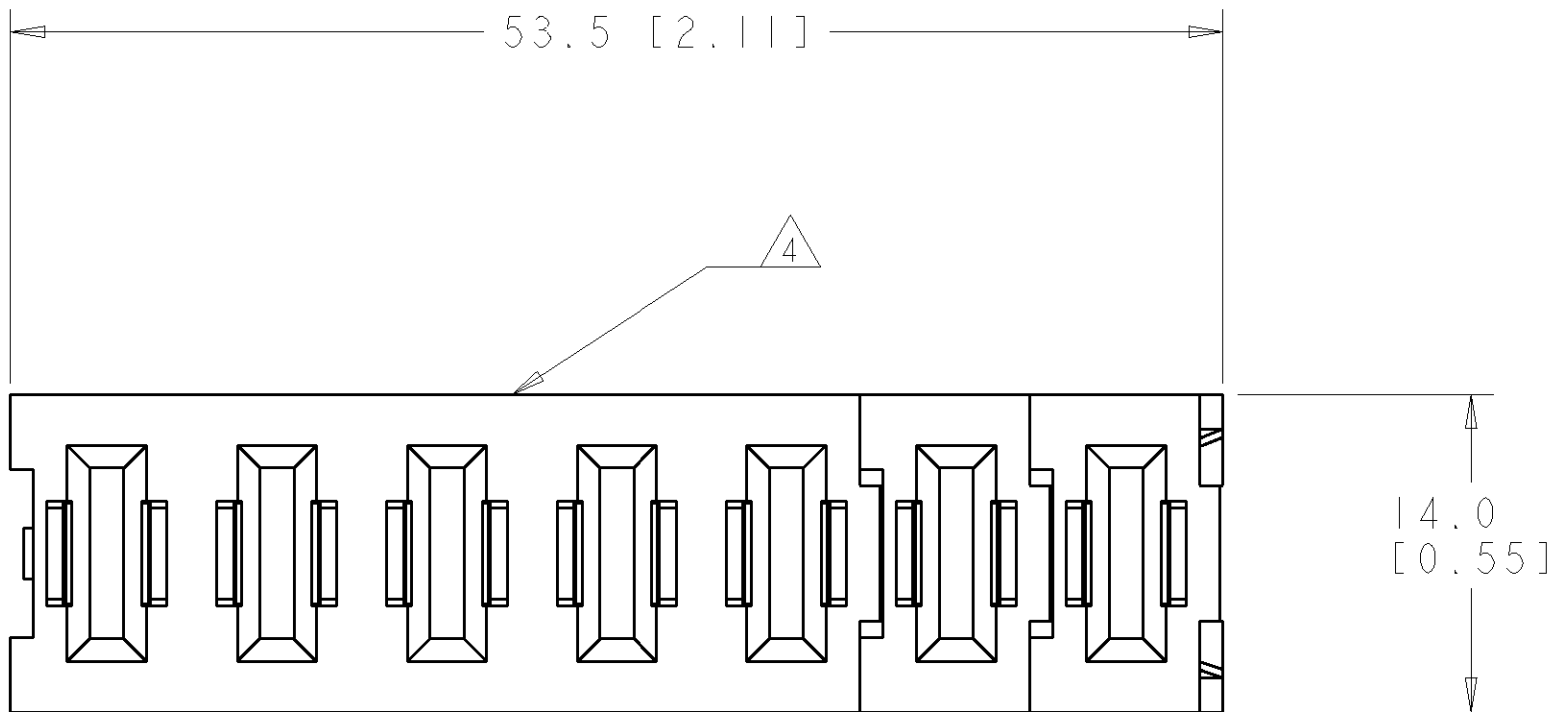
| LOC | DIST | REVISIONS |     |             |         |     |      |
|-----|------|-----------|-----|-------------|---------|-----|------|
| GP  | 00   | P         | LTR | DESCRIPTION | DATE    | DWN | APVD |
|     |      |           | A   | RELEASED    | 02MAR07 | RG  | SF   |
|     |      |           |     |             |         |     |      |
|     |      |           |     |             |         |     |      |
|     |      |           |     |             |         |     |      |

D

D

C

C



1. PART NUMBER CHANGES AND OR DESIGN CHANGES AFFECTING ITEM INTERCHANGEABILITY REQUIRE PRIOR TYCO APPROVAL AND AUTHORIZATION BY REVISION TO THIS DRAWING.
2. MATERIAL:
- INSULATORS - THERMOPLASTIC, GLASS REINFORCED, COLOR: BLACK, UL94V-0 FLAMMABILITY RATED.
  - POWER CONTACTS: PHOSPHOR BRONZE ALLOY, COPPER ALLOY
  - CROWN BANDS - BERYLLIUM COPPER ALLOY
3. FINISH:
- CONTACTS - GOLD PLATE 0.76µm MIN. THK., OVER NICKEL 1.27µm MIN. THK.
  - COMPLIANT TAIL, TIN 1.02µm MIN THK. OVER NICKEL 1.27µm MIN THK.

△ ITEMS PROVIDED TO THIS SPECIFICATION TO BE PERMANENTLY IDENTIFIED PER THE FOLLOWING IDENTIFIER LABEL

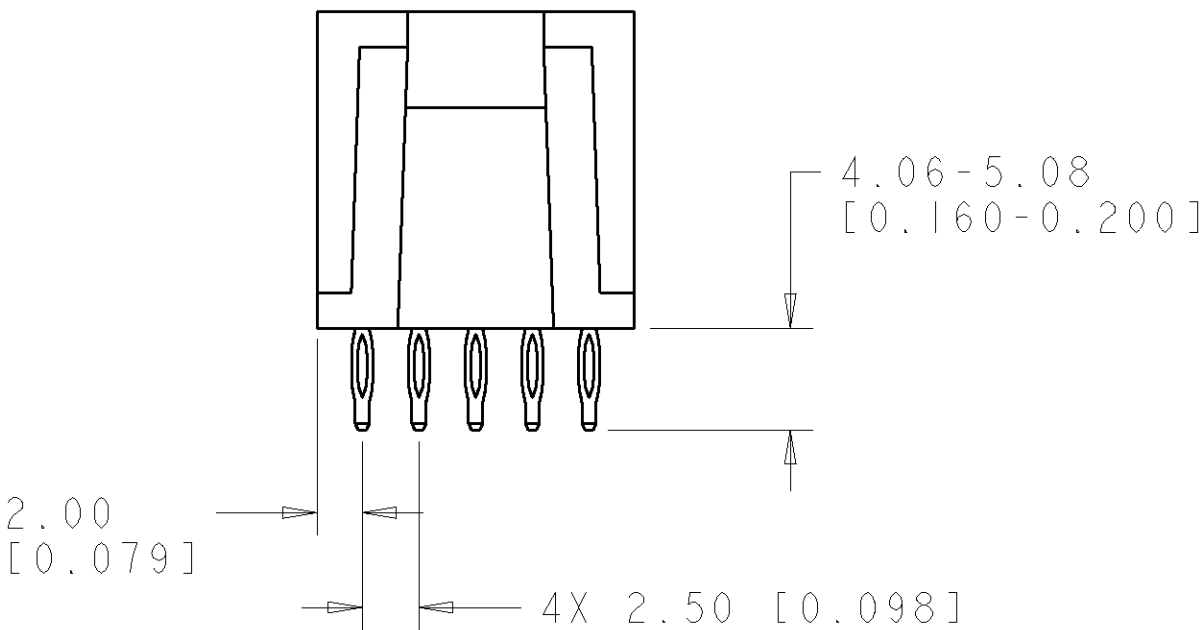
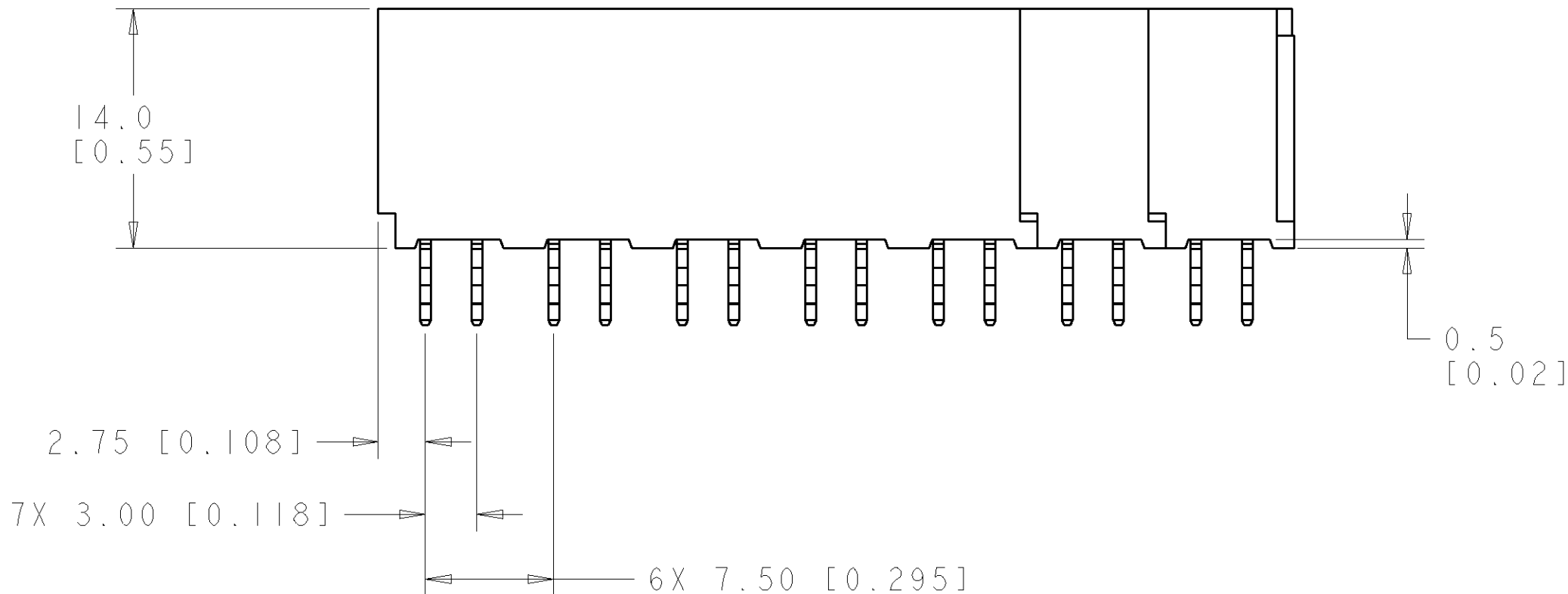
TYCO PART NO. \_\_\_\_\_ DATE CODE (e.g. 0106) \_\_\_\_\_

XXXXXXXX-X      YEAR 1 WEEK 1

XXXX

B

B



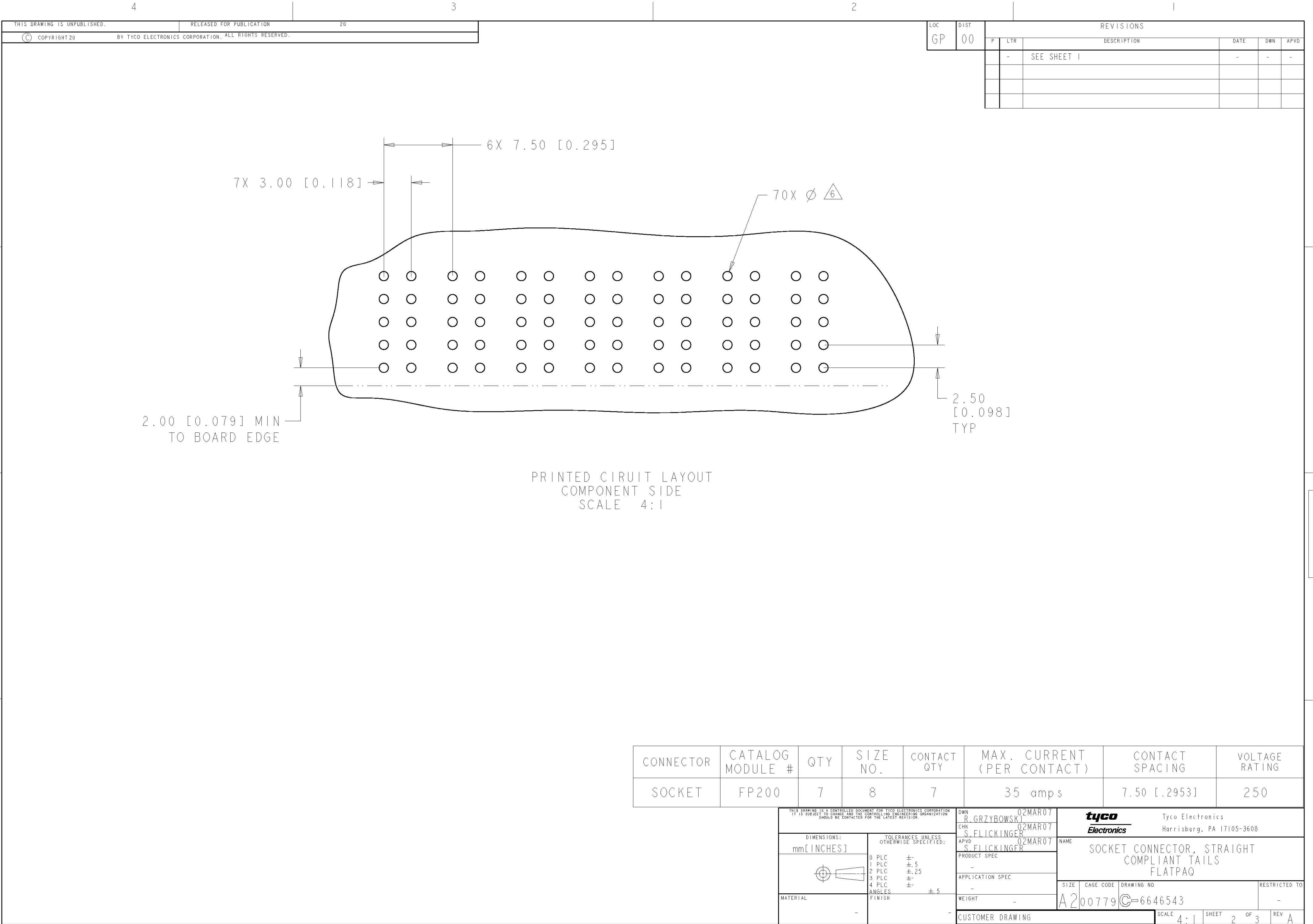
|             |             |
|-------------|-------------|
| AS SHOWN    | 6646543-1   |
| DESCRIPTION | PART NUMBER |

A

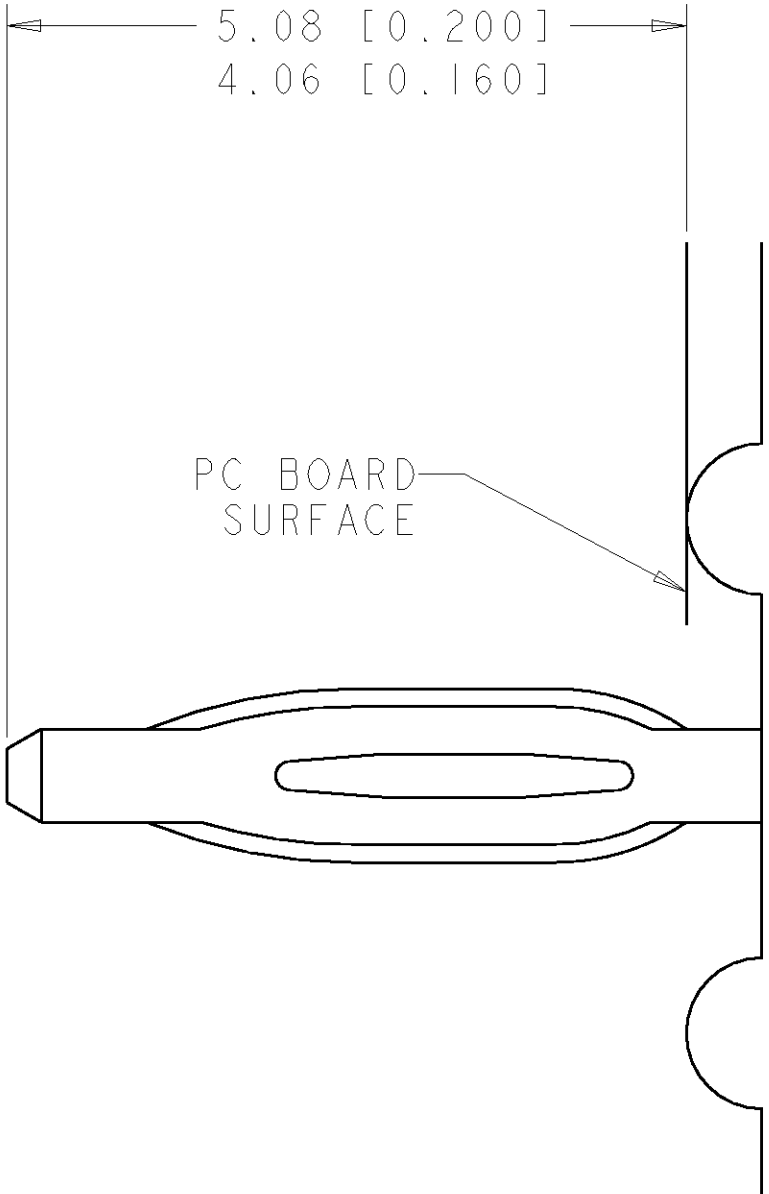
A

ELCON FLATPAQ

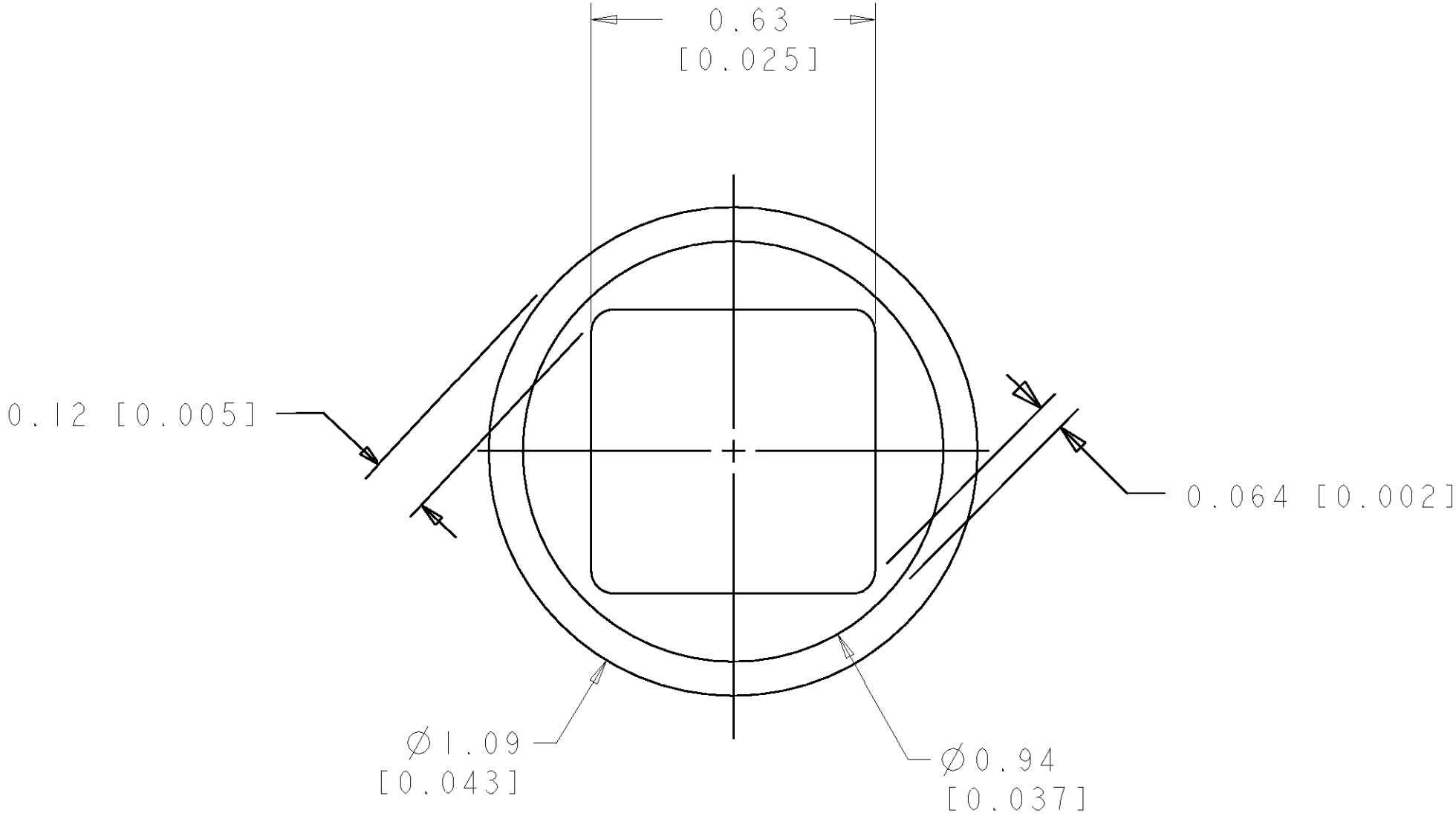
|   |  |   |                               |  |                    |
|---|--|---|-------------------------------|--|--------------------|
| THIS DRAWING IS A CONTROLLED DOCUMENT FOR TYCO ELECTRONICS CORPORATION. IT IS SUBJECT TO CHANGE AND THE CONTROLLING ENGINEERING ORGANIZATION SHOULD BE CONTACTED FOR THE LATEST REVISION. |  | DWN<br>R. GRZYBOWSKI<br>CHK<br>S. FLICKINGER<br>APVD<br>S. FLICKINGER | 02MAR07<br>02MAR07<br>02MAR07 | Tyco Electronics<br>Harrisburg, PA 17105-3608                    |                    |
| DIMENSIONS:<br>mm[INCHES]   |  | TOLERANCES UNLESS OTHERWISE SPECIFIED:                                |                               | NAME<br>SOCKET CONNECTOR, STRAIGHT<br>COMPLIANT TAILS<br>FLATPAQ |                    |
| 0 PLC ±.5<br>1 PLC ±.5<br>2 PLC ±.25<br>3 PLC ±.5<br>4 PLC ±.5<br>ANGLES ±.5<br>FINISH  |  | PRODUCT SPEC<br>APPLICATION SPEC<br>WEIGHT<br>CUSTOMER DRAWING        |                               | SIZE<br>A200779  | RESTRICTED TO<br>- |
| -   |  | -   |                               | CAGE CODE<br>6646543   | SCALE<br>4:1       |
|   |  |   |                               | DRAWING NO.<br>6646543   | SHEET<br>1 OF 3    |
|   |  |   |                               | REV<br>A   |                    |



| LOC | DIST | REVISIONS |     |             |      |     |      |
|-----|------|-----------|-----|-------------|------|-----|------|
| GP  | 00   | P         | LTR | DESCRIPTION | DATE | DWN | APVD |
|     |      |           | -   | SEE SHEET 1 | -    | -   | -    |
|     |      |           |     |             |      |     |      |
|     |      |           |     |             |      |     |      |
|     |      |           |     |             |      |     |      |



5. COMPLIANT PIN DETAIL  
SCALE 10:1  
INSERTION/EXTRACTION FORCES  
MAXIMUM PUSH IN: 133.3N PER PIN [30 LBS]  
MINIMUM PUSH OUT: 44.4N PER PIN [10 LBS]



6. SOLDER TERMINATION AREA  
SCALE 40:1  
RECOMMENDED PRINTED CIRCUIT HOLE  
COMPLIANT PRESS FIT  
DRILLED HOLE: Ø1.15 [0.0453]±.013 [0.0005]  
COPPER PLATE .025 [0.0010] TO .050 [0.0020]  
TIN PLATE: .0005 [0.000020] MIN. (PER SURFACE)

|  |  |   |                               |  |                        |                    |
|--|--|---|-------------------------------|--|------------------------|--------------------|
| THIS DRAWING IS A CONTROLLED DOCUMENT FOR TYCO ELECTRONICS CORPORATION<br>IT IS SUBJECT TO CHANGE AND THE CONTROLLING ENGINEERING ORGANIZATION<br>SHOULD BE CONTACTED FOR THE LATEST REVISION. |  | DWN<br>R. GRZYBOWSKI<br>CHK<br>S. FLICKINGER<br>APVD<br>S. FLICKINGER | 02MAR07<br>02MAR07<br>02MAR07 | <b>tyco</b> Tyco Electronics<br><b>Electronics</b> Harrisburg, PA 17105-3608 |                        |                    |
| DIMENSIONS:<br>mm[INCHES]  |  | TOLERANCES UNLESS<br>OTHERWISE SPECIFIED:                             |                               | NAME<br>SOCKET CONNECTOR, STRAIGHT<br>COMPLIANT TAILS<br>FLATPAQ             |                        |                    |
| 0 PLC ±.5<br>1 PLC ±.5<br>2 PLC ±.25<br>3 PLC ±.5<br>4 PLC ±.5<br>ANGLES ±.5<br>FINISH   |  | PRODUCT SPEC<br>APPLICATION SPEC<br>WEIGHT<br>CUSTOMER DRAWING        |                               | SIZE<br>A200779  | CAGE CODE<br>C-6646543 | RESTRICTED TO<br>- |
| -  |  | -   |                               | SCALE<br>4:1   | SHEET<br>3 OF 3        | REV<br>A           |

# Mouser Electronics

Authorized Distributor

Click to View Pricing, Inventory, Delivery & Lifecycle Information:

[TE Connectivity:](#)

[6646543-1](#)