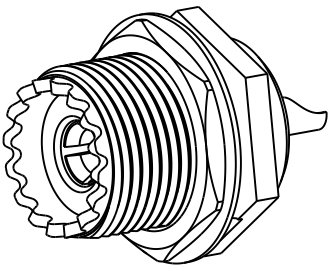
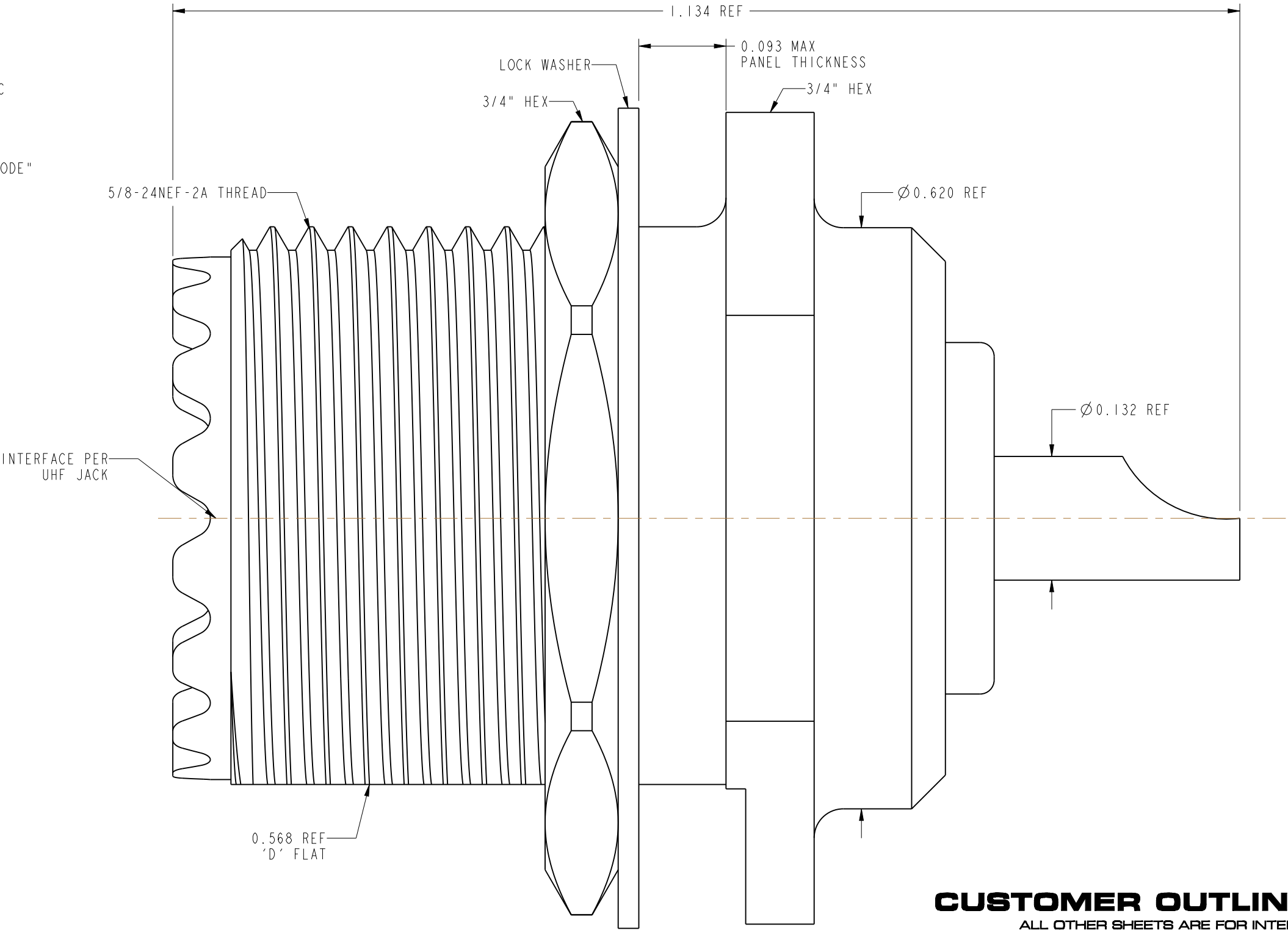
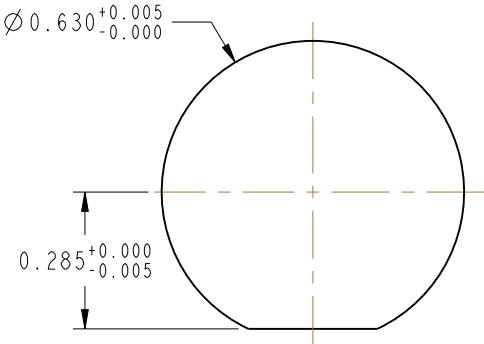


NOTES:  1. MATERIALS AND FINISHES: BODY - ZINC DIE CAST, NICKEL PLATING CONTACT - BRASS, SILVER PLATING INSULATOR - PTFE, NATURAL WASHER - STEEL, NICKEL PLATING NUT-HEX - BRASS, NICKEL PLATING  2. MECHANICAL: A. DURABILITY: 500 CYCLES MIN. B. TEMPERATURE RANGE: -65° C TO +165° C  3. PACKAGING: A. QUANTITY: SINGLE PACK B. MARKING: BAG TO BE MARKED "AMPHENOL RF, 83-878-RFX, AND DATE CODE"	THIRD ANGLE PROJ. 		REVISIONS			
	REV	DESCRIPTION		DATE	ECO	APPR
	--	RELEASE TO MFG.		--	--	--
	D	REDRAWN IN PRO-E & COD SHEET ADDED		6/1/15	50343	AAP



SCALE 1.500



RECOMMENDED MOUNTING HOLE DIMENSIONS

**CUSTOMER OUTLINE DRAWING**  
ALL OTHER SHEETS ARE FOR INTERNAL USE ONLY

UNLESS OTHERWISE SPECIFIED, DIMENSIONS ARE IN INCHES AND TOLERANCES ARE: 2 PLACE DECIMAL 3 PLACE DECIMAL ANGLES ±.015 (0,381 mm) ±.005 (0,127 mm) ± 1°  NOTICE - These drawings, specifications, or other data (1) are, and remain the property of Amphenol corp. (2) must be returned upon request; and (3) are confidential and not to be disclosed to any person other than those to whom they are given by Amphenol Corp. the furnishing of these drawings, specifications, or other data by Amphenol Corp., or to any other person to anyone for any purpose is not to be regarded by implication or otherwise in any manner licensing, granting rights to permitting such holder or any other person to manufacture, use or sell any product, process or design, patented or otherwise, that may in any way be related to or disclosed by said drawings, specifications, or other data.	MATERIAL	DRAWN	DATE	TITLE		Amphenol RF www.amphenolrf.com	
	SEE NOTES	A ARUN PRABU	28-Nov-14				
	REFERENCE	ENGINEER	DATE	DRAWING NO.83-878-RFX		ITEM NO.83-878-RFX	
	EAR # 962370-0	D.ROYCE	27-Apr-91				
	CONFIGURATION LEVEL: In Work	APPROVED	DATE	SCALE: 8.0:1.0	SHEET 2 OF 2	PART NO.83-878-RFX	
	FINISH	K. CAPOZZI	6/1/15	DWG SIZE	REV		
		CAD FILE		B	D		

# Mouser Electronics

Authorized Distributor

Click to View Pricing, Inventory, Delivery & Lifecycle Information:

[Amphenol:](#)

[083-878-RFX](#)