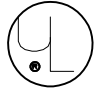


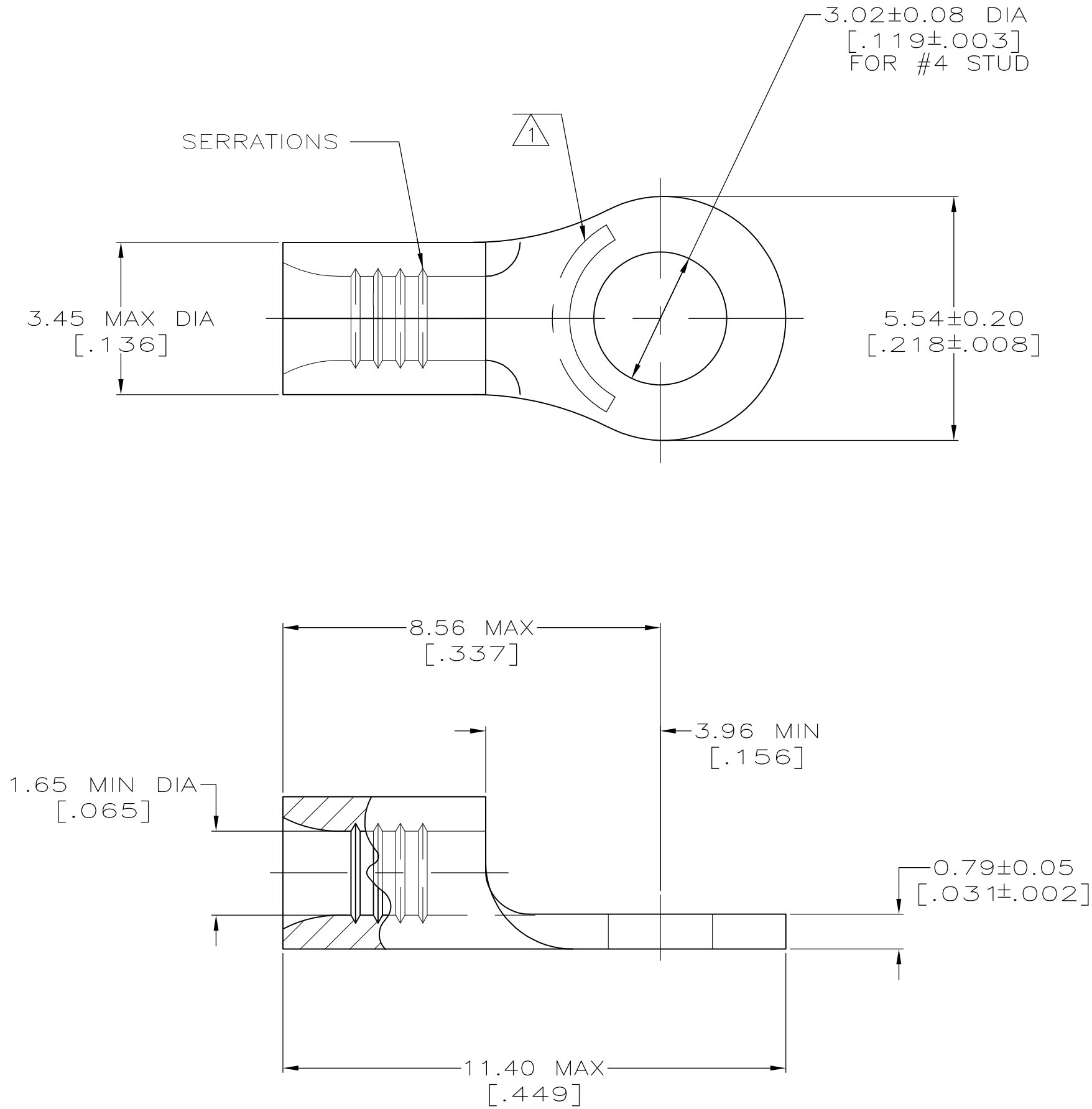





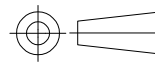
AMP WIRE RANGE	 E13288 Listed
22-16 AWG STRANDED	22-16 AWG STRANDED

 LR7189 Certified	MILITARY P/N AND CLASS
NOT CERTIFIED	NOT APPLICABLE

 STAMP AMP 22-18* APPROX AS SHOWN
22-16 TERMINALS ARE STAMPED 22-18 IN
ACCORDANCE WITH MILITARY SPECIFICATION
MIL-T-7928; COMMERCIAL WIRE RANGE IS 22-16



AMP INCORPORATED CUSTOMER SERVICE SYSTEMS		MAX RECOMMENDED OPERATING TEMPERATURE: 170° C MAX
FOR ADDITIONAL PRODUCT INFORMATION OR COPIES OF DRAWINGS AND TECHNICAL DOCUMENTS	PRODUCT INFORMATION CENTER 1-800-522-6752	VOLTAGE RATING: NOT APPLICABLE
FOR APPLICATION TOOLING INFORMATION	TOOLING ASSISTANCE CENTER 1-800-722-1111	WIRE CROSS SECTIONAL AREA RANGE: 0.26-1.65mm ² [509-3,260] CIR MILS STRANDED
FOR ORDER ENTRY	1-800-526-5142	THIS DRAWING IS A CONTROLLED DOCUMENT FOR AMP INCORPORATED. IT IS SUBJECT TO CHANGE AND THE CONTROLLING ENGINEERING ORGANIZATION SHOULD BE CONTACTED FOR THE LATEST REVISION.

		5000	ON TAPE	3-31089-6	
		----	LOOSE PIECE	31089	
		QUANTITY	PACKAGE TYPE	PART NO	
THIS DRAWING IS A CONTROLLED DOCUMENT.		DWN TA BRINKMAN 2-2-93	 TE Connectivity		
		CHK DA PATTERSON 2-2-93			
		APVD DE MILLER 2-2-93			
DIMENSIONS: MM[INCHES]		TOLERANCES UNLESS OTHERWISE SPECIFIED:		NAME	
		0 PLC ± - 1 PLC ± - 2 PLC ± - 3 PLC ± - 4 PLC ± - ANGLES ± ± -		TERMINAL, RING TONGUE, BUDGET	
MATERIAL		FINISH	APPLICATION SPEC	SIZE	CAGE CODE
COPPER PER ASTM B-152 ANNEALED		TIN PLATE 0.00254[.000100] MIN THK PER MIL-T-10727	—	A2	00779
		WEIGHT	—	DRAWING NO	RESTRICTED TO
		CUSTOMER DRAWING		G-31089	—
				SCALE	SHEET
				10:1	1 of 1
					REV D1

Mouser Electronics

Authorized Distributor

Click to View Pricing, Inventory, Delivery & Lifecycle Information:

[TE Connectivity:](#)

[3-31089-6](#)