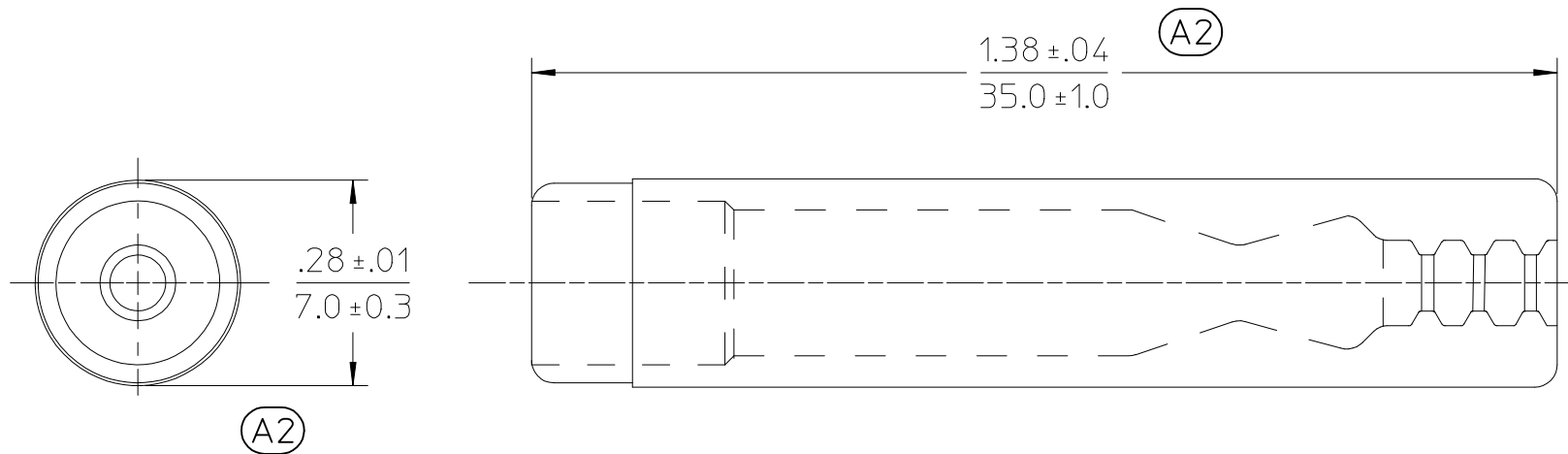




6		5	4	3	2	1
METERIAL NUMBER	ENGINEERING NUMBER	COLOR				
191610334	SPR-1	SEMI-TRASPARENT TEAL				
191610670	SPR-1-CL	TRASPARENT CLEAR				



NOTES:

1. MATERIAL: PVC
2. COLOR: SEE CHART.
3. PARTS ARE ROHS COMPLIANT.

ORIGINALLY DRAWN
BY BRE 2003/08/07

UPDATE DIM TOL EC NO: IPG2016-1554 DRWN: GROJAS01 2016/05/24 CHKD: APPR: JMACNEIL 2016/05/31 A2	DESCRIPTION REV	QUALITY SYMBOLS	GENERAL TOLERANCES (UNLESS SPECIFIED)		DIMENSION STYLE IN/MM		SCALE 4:1	DESIGN UNITS INCH	THIRD ANGLE PROJECTION	
		 =0  =0		mm	INCH	DRAWN BY GROJAS01	DATE 2014/12/22	TITLE SPLASH PROOF INSULATOR FEMALE RECEPTACLE 22-14 AWG molex	DOCUMENT NO. SD-19161-025	SHEET NO. 1 OF 1
			4 PLACES	± ---	± ---	CHECKED BY JMACNEIL	DATE 2014/12/22			
			3 PLACES	± ---	± .005	APPROVED BY	DATE			
			2 PLACES	± 0.25	± .010					
			1 PLACE	± 0.13	± ---					
			0 PLACE	±	±					
		ANGULAR ±1/2°		MATERIAL NO.						
		DRAFT WHERE APPLICABLE MUST REMAIN WITHIN DIMENSIONS		SEE CHART						
				SIZE A	THIS DRAWING CONTAINS INFORMATION THAT IS PROPRIETARY TO MOLEX INCORPORATED AND SHOULD NOT BE USED WITHOUT WRITTEN PERMISSION					

Mouser Electronics

Authorized Distributor

Click to View Pricing, Inventory, Delivery & Lifecycle Information:

Molex:

19161-0344