

4

3

2

1

THIS DRAWING IS UNPUBLISHED.

RELEASED FOR PUBLICATION

© COPYRIGHT

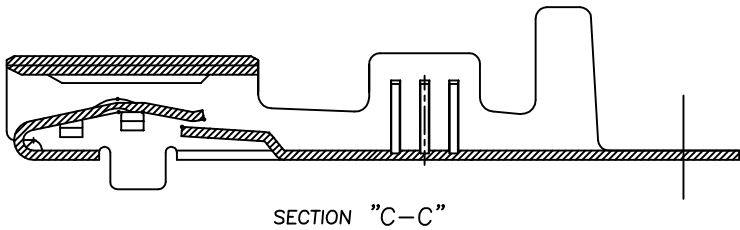
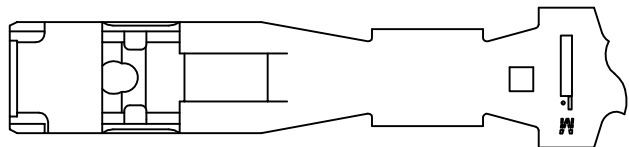
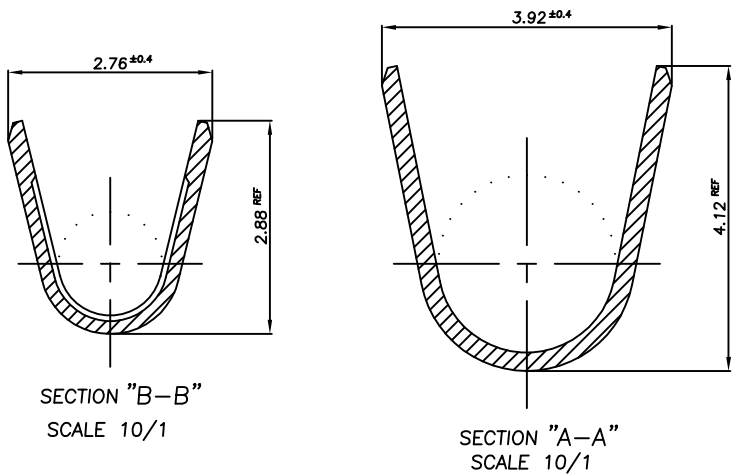
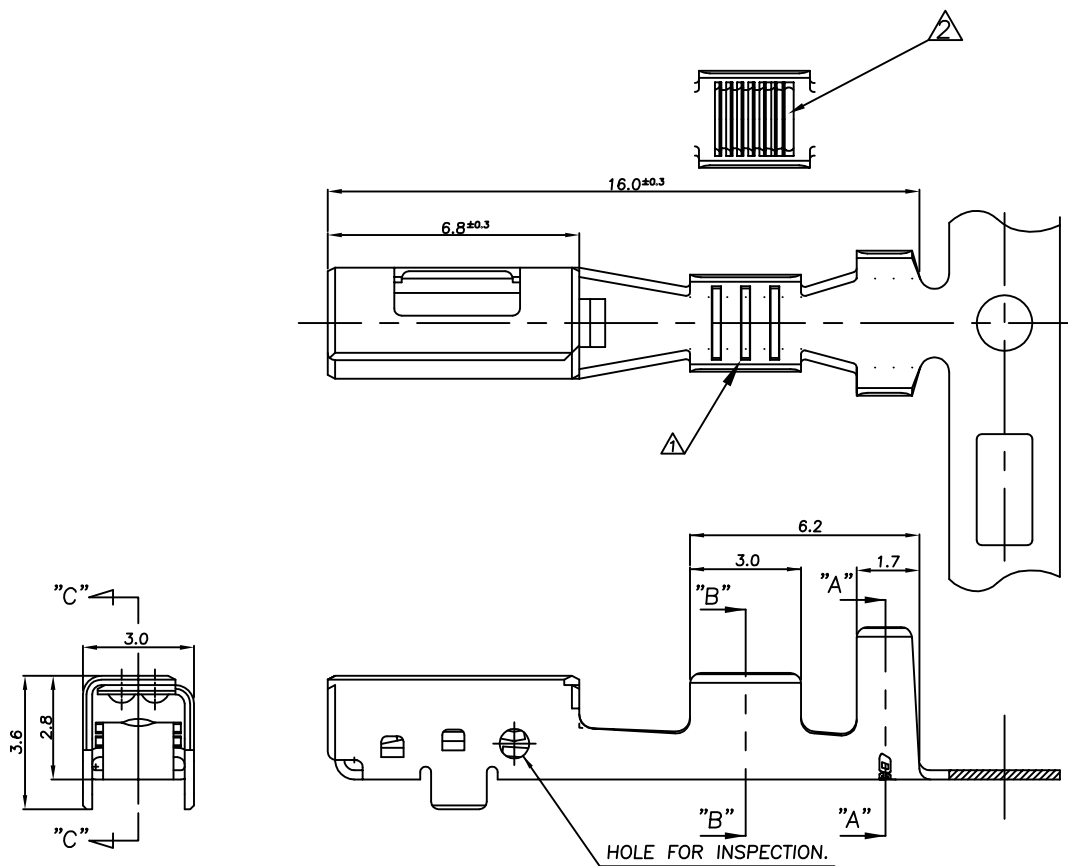
BY TYCO ELECTRONICS CORPORATION, ALL RIGHTS RESERVED.

LOC  
DS

DIST  
—

REVISIONS

P	LTR	DESCRIPTION	DATE	DWN	APVD
	B1	REVISED (ECR-12-003220)	24.FEB.'12	KT	HG



- NOTES
- △ THREE SERRATION CENTERED IN WIRE BARREL
  - △ SEVEN SERRATION CENTERED IN WIRE BARREL

ALUMINUM 0.75 SQ	PRE-TINNED	CuNiSi Alloy, 0.25THK	9-1743655-1
0.75-1.25 SQ	PRE-TINNED	CuNiSi Alloy, 0.25THK	1743655-1
WIRE RANGE	FINISH	MATERIAL	PART NUMBER

THIS DRAWING IS A CONTROLLED DOCUMENT FOR TYCO ELECTRONICS CORPORATION IT IS SUBJECT TO CHANGE AND THE CONTROLLING ENGINEERING ORGANIZATION SHOULD BE CONTACTED FOR THE LATEST REVISION.		DWN KT JUNG CHK KT LIM APVD HG CHD PRODUCT SPEC APPLICATION SPEC WEIGHT CUSTOMER DRAWING		NAME <b>TE</b> TE Connectivity .090III MLC RECEP CONTACT (M)	
DIMENSIONS: MM	TOLERANCES UNLESS OTHERWISE SPECIFIED: 0 <XX<10 ± 0.2 10≤XX<30 ± 0.25 ANGLES ± 3°	SIZE A3	CAGE CODE 00779	DRAWING NO C-1743655	RESTRICTED TO —
MATERIAL SEE TABLE	FINISH SEE TABLE	SCALE 5/1		SHEET 1 OF 1	REV B1

# Mouser Electronics

Authorized Distributor

Click to View Pricing, Inventory, Delivery & Lifecycle Information:

[TE Connectivity:](#)

[1743655-1](#)