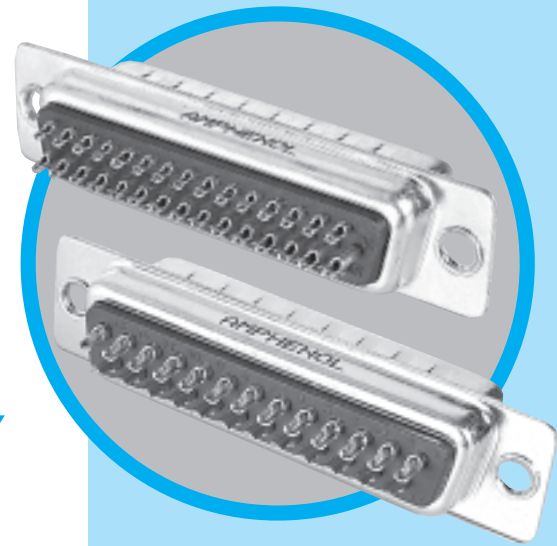


SD

D'Sub connectors - Stamped and Formed Contacts

SOLDER-CUP TERMINATION STANDARD and HIGH DENSITY



CHARACTERISTICS

Specifications

- UL File: E149426
- Connectors according to MIL C24308

Materials and Platings	
Shells	Steel, tin over nickel plating
Insulator	Glass-filled thermoplastic, UL 94V-0
Contacts	Brass, selected gold in mating area; 2.54µm (100µ") min. tin on termination area over
Rear insert	1.27µm (50µ") min. nickel
Screwlock	Brass, 2.54µm (100µ") min. nickel plated

Electrical Data	
Current rating	Standard Density: 5A High Density: 3A
Voltage rating	250V AC/rms 50Hz
Withstanding voltage	1000V AC/rms 50Hz for one minute
Insulation resistance	1000MΩ at 500V DC
Contact resistance	20mΩ max

Climatic Data	
Operating temperature	-55°C to +125°C
Salt spray	24 hours

Mechanical Data					
Single contact insertion force		0.54kg (1.19lb) max			
Single contact withdrawal force		SD : 0.06kg (0.13lb) min		HD : 0.02kg (0.044lb) min	
Mating and unmating force					
Unit: kg (lb)					
No. of Cts		SD		HD	
SD	HD	Mate (max)	Unmate (min)	Mate (max)	Unmate (min)
9	15	3.05 (6.74)	0.36 (0.79)	3.81 (8.42)	0.52 (1.14)
15	26	5.09 (11.24)	0.46 (1.01)	5.95 (13.16)	1.05 (2.32)
25	44	8.44 (18.66)	0.81 (1.8)	9.26 (20.46)	1.37 (3.02)
37	62	12.51 (27.65)	1.1 (2.47)	13.48 (29.78)	1.76 (3.88)
50	78	14.65 (32.38)	1.6 (3.56)	15.82 (34.96)	2.02 (4.46)
Standard plating thickness		<ul style="list-style-type: none"> • gold flash • 0.4µm (15µ") gold • 0.76 µm (30µ") gold 			

DESCRIPTION

The Amphenol "SD" series features precision formed contacts, and insulator with closed entry contacts cavities.

This series gives you Amphenol's high standards of quality and reliability to meet all of your commercial requirements.

*Economical
solder cup
connectors*

APPLICATION

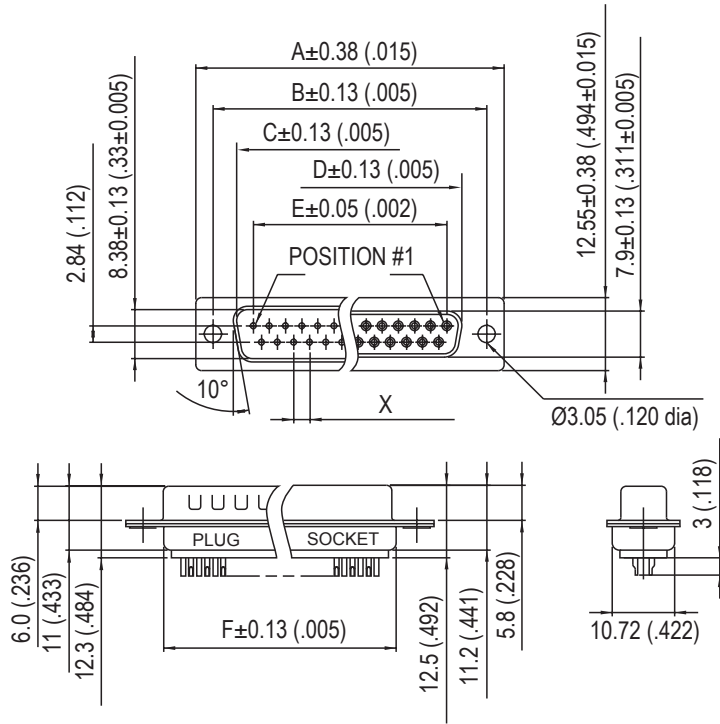
- Industrial
- Telecom
- Any industry standard I/O connections



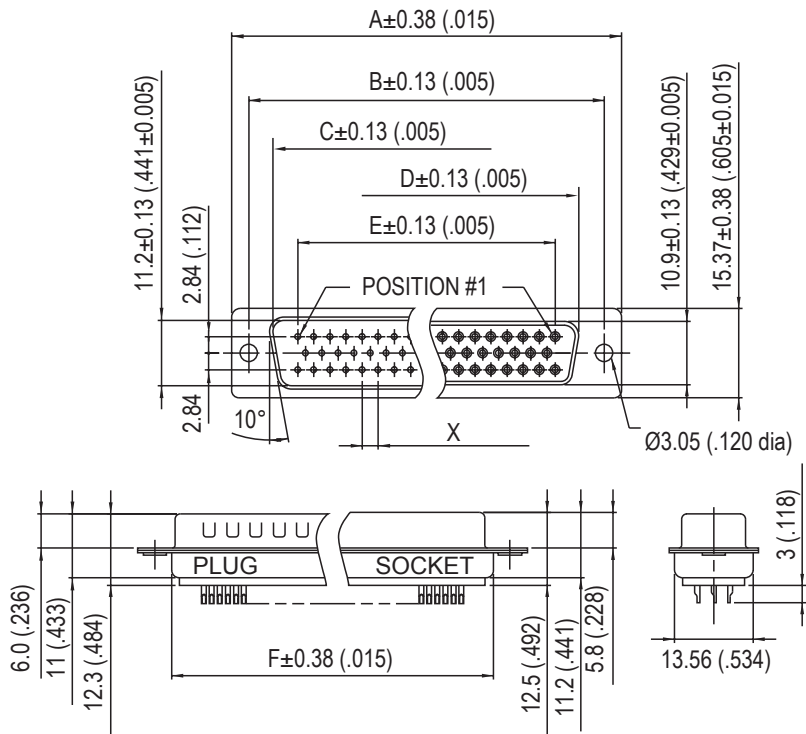
Amphenol

SD / E5

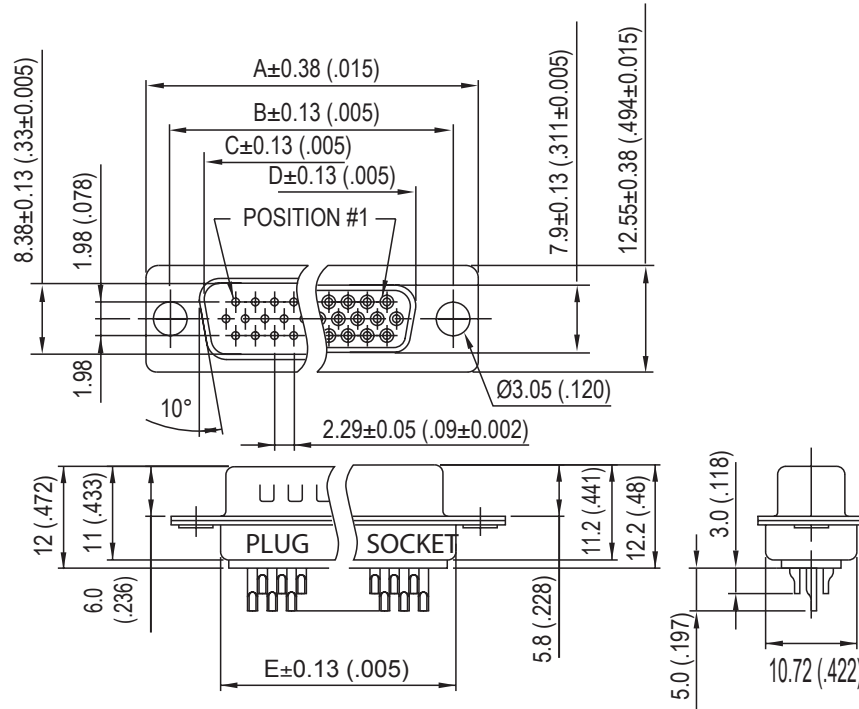
Standard Density



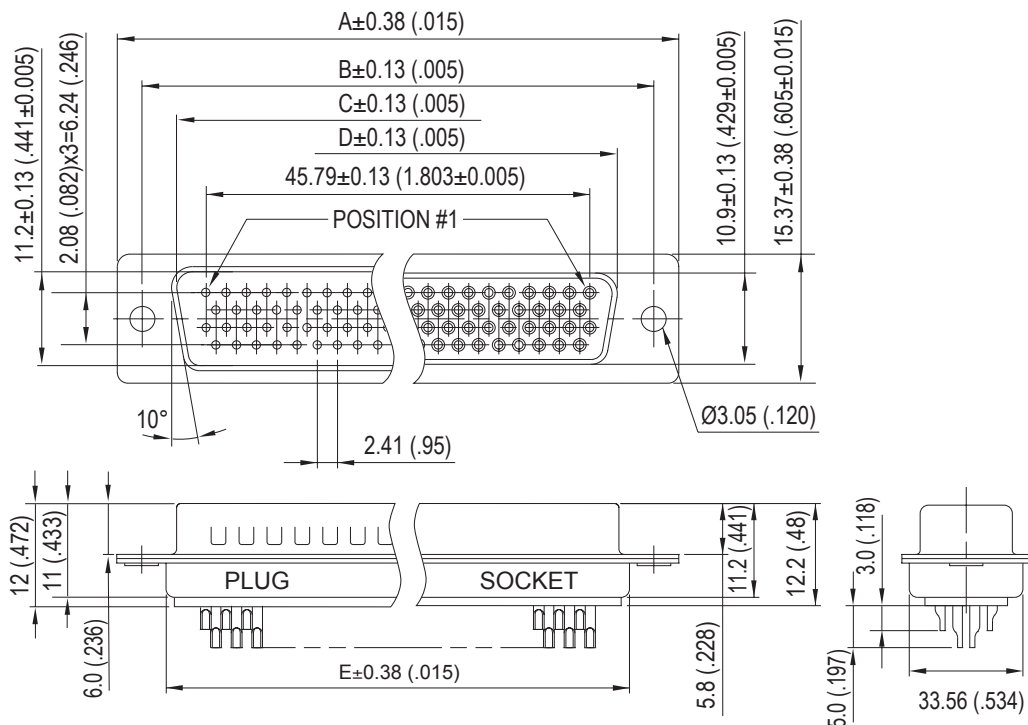
Nb OF CONTACTS	DIMENSIONS mm (inch)						
	A	B	C	D	E	F	X
9	30.84 (1.21)	24.99 (.98)	16.92 (.67)	16.24 (.64)	11.09 (.44)	19.28 (.76)	2.77
15	39.24 (1.54)	33.32 (1.31)	24.7 (.972)	24.56 (.97)	19.39 (.76)	27.51 (1.08)	2.77
25	53.04 (2.09)	47.04 (1.85)	38.96 (1.53)	38.38 (1.51)	33.24 (1.31)	41.30 (1.63)	2.77
37	69.32 (2.73)	63.50 (2.50)	55.42 (2.18)	54.76 (2.16)	49.86 (1.96)	57.71 (2.27)	2.77
50	67 (2.64)	61.11 (2.41)	52.86 (2.08)	52.34 (2.06)	44.32 (1.75)	55.3 (2.18)	2.77



High Density



Nb OF CONTACTS	DIMENSIONS mm (inch)				
	A	B	C	D	E
15	30.84 (1.21)	24.99 (.98)	16.92 (.67)	16.24 (.64)	19.28 (.76)
26	39.24 (1.54)	33.32 (1.31)	24.7 (.972)	24.56 (.97)	27.51 (1.08)
44	53.04 (2.09)	47.04 (1.85)	38.96 (1.53)	38.38 (1.51)	41.30 (1.63)
62	69.32 (2.73)	63.50 (2.50)	55.42 (2.18)	54.76 (2.16)	57.71 (2.27)
78	67 (2.64)	61.11 (2.41)	52.86 (2.08)	52.34 (2.06)	55.3 (2.18)



78 CONTACTS

Mouser Electronics

Authorized Distributor

Click to View Pricing, Inventory, Delivery & Lifecycle Information:

Amphenol:

[L77SDD50S](#) [L77SDE09SVFMC309HF](#) [L77SDB25SC309PBZ](#) [L77HDEH15SC309](#) [L77HDA26SVFMC309](#)
[L77HDAH26SC309](#) [L77HDDH78SC309](#) [L77SDAG15SC309](#) [L77HDB44SC309](#) [L77HDB44SVFMC309](#)
[L77SDAH15SC309](#) [L77SDBH25SC309](#) [L77HDCG62SC309](#) [L77HDE15SVFMC309](#) [L77SDA15SC309PBZ](#)
[L77SDC37S1ATNR106RM6C309](#) [L77SDE09SA4CN4RC309B211](#) [L77SDE09S4FC309PBZ](#) [L77SDE09SC309PBZ](#)
[L77SDB25SVFMC309](#) [L77SDE09SA4C0C309](#) [L77HDC62SC309](#) [L77HDAG26SC309](#) [L77SDA15SA4CG4FC309](#)
[L77HDE15SC309Z](#) [L77HDB44SVFC309](#) [L77HDBH44SC309](#) [L77HDD78SVFC309](#) [L77SDBG25SC309](#)
[L77SDCG37SC309](#) [L77SDE09SC309](#) [L77SDEG09SC309](#) [L77HDC62SVFMC309](#) [L77SDD50SVFMC309](#)
[L77HDD78SVFMC309](#) [L77HDEG15SC309](#) [L77SDB25SC309](#) [L77SDCH37SC309](#) [L77HDBG44SC309](#)
[L77HDCH62SC309](#) [L77SDA15SC309](#) [L77HDDG78SC309](#) [L77SDDH50SC309](#) [L77SDE09SVFMC309](#)
[L77SDD50SC309](#) [L77HDA26SC309](#) [L77HDC62SVFC309](#) [L77HDE15SC309](#) [L77SDC37SC309](#)
[L77SDC37SVFMC309](#) [L77SDDG50SC309](#) [L77HDE15SVFC309](#) [L77HDA26SVFC309](#) [L77SDA15SVFMC309](#)
[L77SDE09SA4CG4RC309](#) [L77HDCH62SVFC309](#) [L77HDAH26SVF](#) [L77SDE09S1ACO4F](#) [L77SDC37S1ACO3R](#)
[L77SDEH09SOL2GT36](#) [L77SDE09SA4CO4RC309](#) [L77HDEH15SVF](#) [L77SDE09S1ACN4FC309](#) [L77SDB25S1A4R](#)
[L77SDE09SABCO4RC309](#) [L77SDA15STA113](#) [L77SDE09SA4CO](#) [L77SDAH15SVFMC309](#) [L77SDE09S1A4R](#)
[L77SDE09SA4COC309](#) [L77SDE09SABCO4R](#) [L77SDEH09SOL2RM8GF](#) [L77HDE15P](#) [L77HDBG44S](#)
[L77HDCG62S](#) [L77HDBG44P](#) [L77HDDG78S](#) [L77HDBH44P](#) [L77HDAG26P](#) [L77HDD78PVFM](#) [L77HDEG15S](#)
[L77HDDG78P](#) [L77HDC62P](#) [L77HDDH78P](#) [L77HDB44P](#) [L77HDD78PVF](#) [L77HDEG15P](#) [L77HDAG26S](#)
[L77HDD78P](#) [L77HDEH15P](#) [L77HDCG62P](#) [L77HDCH62P](#) [L77HDDH78S](#) [L77HDAH26P](#) [L77SDEG09S](#)
[L77SDE09S4F](#) [L77SDB25SR210FCNM](#) [L77SDC37S1ATNR106RM6](#) [L77SDE09SPBZ](#) [L77SDE09SVF](#)