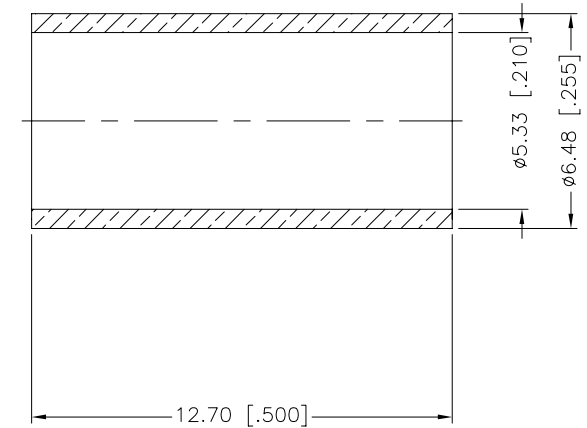
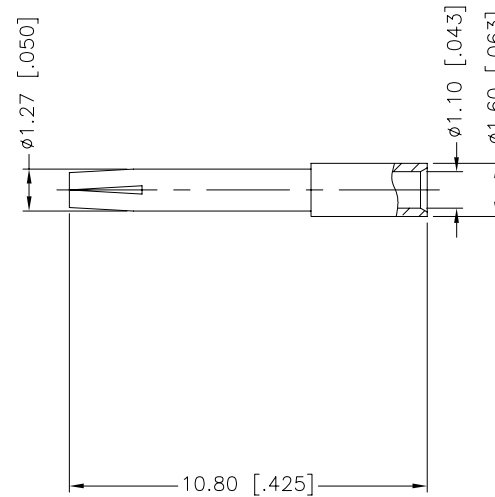
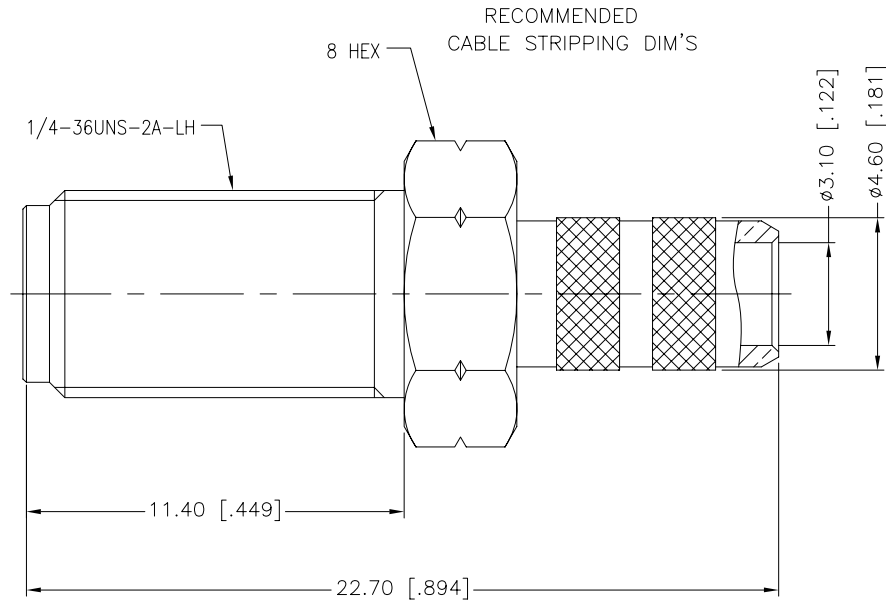
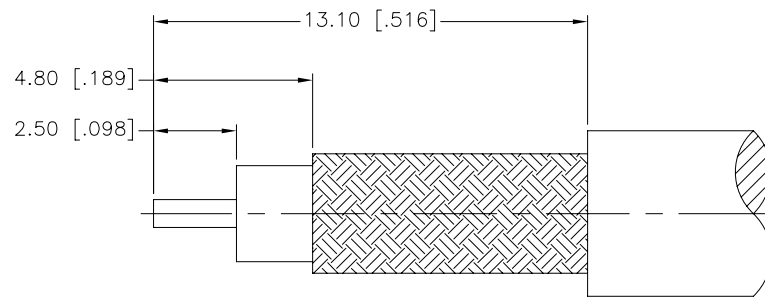


REV.	DATE	ECR NO.	DESCRIPTION
NC	05/21/10	XXXXXX	INITIAL RELEASE



1. CRIMPED FERRULE
HEX CRIMP SIZE .213"
2. CONTACT PIN TO SOLDER

					UNLESS OTHERWISE SPECIFIED DIMENSIONS ARE IN MILLIMETERS. DIMENSIONS IN [] ARE IN INCHES AND FOR CUSTOMER REFERENCE ONLY.		APPROVALS		DATE		<h1>Amphenol Connex</h1>				
					UNLESS OTHERWISE SPECIFIED TOLERANCES FOR MILLIMETERS ARE: 0.5 – 8mm ± 0.20mm 8 – 30mm ± 0.40mm 30 – 120mm ± 0.50mm		DRAWN M.ZHANG		05/21/10						
					UNLESS OTHERWISE SPECIFIED TOLERANCES FOR INCHES ARE: .020 – .315 = ± 0.007” .315 – 1.180 = ± 0.015” 1.180 – 4.724 = ± 0.020”		CHECKED								
							ISSUED								
4	FERRULE	COPPER	GOLD	1			SHEET 1 OF 1				PART DESCRIPTION				
3	CONTACT PIN	BER. COPPER	GOLD	1							SMA CRIMP JACK W/ REVERSE THREAD (FOR RG–58C/U, 58/U CABLE)				
2	INSULATOR	PTFE	NATURAL	1							PART NO.				
1	BODY	BRASS	GOLD	1							132116RT				
DESCRIPTION		MATERIAL	FINISH	QTY	DO NOT SCALE DRAWING		CAD FILE C:/CONNEX/132116RT.DWG		DWG. NO. 132116RT.DWG		REV. NC	SIZE A	SCALE NA		

Mouser Electronics

Authorized Distributor

Click to View Pricing, Inventory, Delivery & Lifecycle Information:

[Amphenol:](#)

[132116RT](#)