

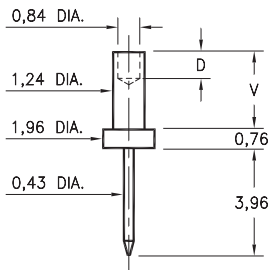
MALE PCB PINS

PRINTED CIRCUIT PINS

3116

3116-X-00-XX-00-00-08-0

Swage mount in 1,32 hole

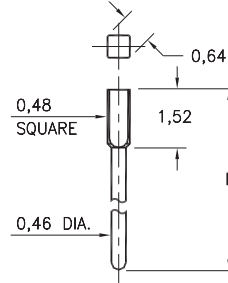


Basic Part Number	Board Thickness	Length V	Depth D
3116-1	0,79	1,30	0,89
3116-2	1,57	2,08	1,57
3116-3	2,39	2,87	1,57
3116-4	3,18	3,68	1,57

X435

X435-X-05-XX-00-00-03-0

Square press-fit in 0,56 plated through-hole

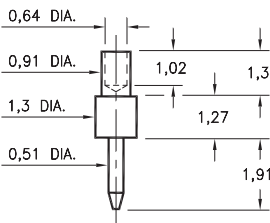


Basic Part Number	Length L
5435-0	7,70
5435-1	5,08
5435-2	10,49
6435-0	7,11

3135

3135-1-00-XX-00-00-08-0

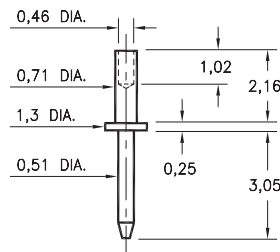
Swage mount in 1,02 hole
For 0,79 thick board



3210

3210-2-00-XX-00-00-08-0

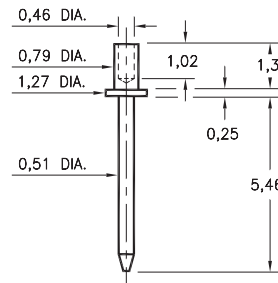
Swage mount in 0,79 hole
For 1,57 thick board



3129

3129-1-00-XX-00-00-08-0

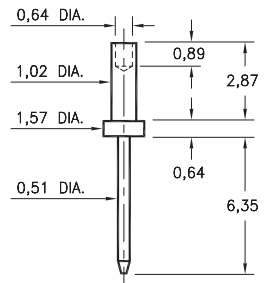
Swage mount in 0,89 hole
For 0,79 thick board



3147

3147-3-00-XX-00-00-08-0

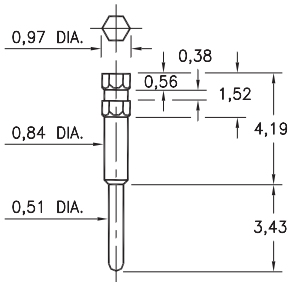
Swage mount in 1,09 hole
For 2,39 thick board



4366

4366-0-00-XX-00-00-03-0

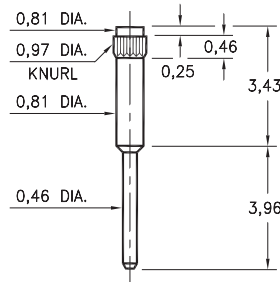
Hex press-fit in 0,86 plated through-hole



1267

1267-0-00-XX-00-00-03-0

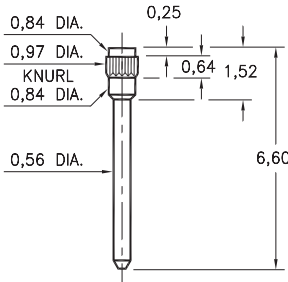
Press-fit in 0,89 mounting hole



7827

7827-0-00-XX-00-00-03-0

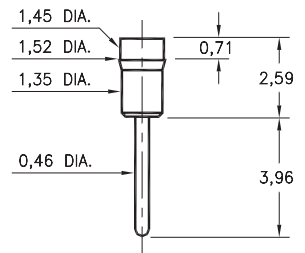
Press-fit in 0,89 mounting hole



1130

1130-0-00-XX-00-00-03-0

Press-fit in 1,45 mounting hole
Pin material is Phosphor Bronze 544 (B2)



SPECIFICATIONS:

Pin Material: Brass Alloy 360, 1/2 Hard
(Except where noted)

Dimensions: Millimeters

Tolerances On: Lengths: $\pm 0,13$
Diameters: $\pm 0,051$
Angles: $\pm 2^\circ$



ORDER CODE: XXXX - X - 0X - XX - 00 - 00 - XX - 0

BASIC PART #

SPECIFY PIN FINISH:

- 01 5,08 μ m TIN/LEAD OVER NICKEL
- ◆ 80 5,08 μ m TIN OVER NICKEL (RoHS)
- ◆ 15 0,25 μ m GOLD OVER NICKEL (RoHS)
- ◆ 21 0,51 μ m GOLD OVER NICKEL (RoHS)
- ◆ 34 1,27 μ m GOLD OVER NICKEL (RoHS)



Mouser Electronics

Authorized Distributor

Click to View Pricing, Inventory, Delivery & Lifecycle Information:

[Mill-Max:](#)

[5435-1-05-15-00-00-03-0](#) [3135-1-00-15-00-00-08-0](#) [3147-3-00-21-00-00-08-0](#) [5435-0-05-15-00-00-03-0](#) [5435-1-05-34-00-00-03-0](#)