

| LOC | DIST | REVISIONS | | | | | |
|-----|------|-----------|-----|---------------------------|-----------|-----|------|
| | | P | LTR | DESCRIPTION | DATE | DWN | APVD |
| GP | 00 | | Y | REVISED PER ECO-15-010090 | 16JUL2015 | AP | DG |

D

D

C

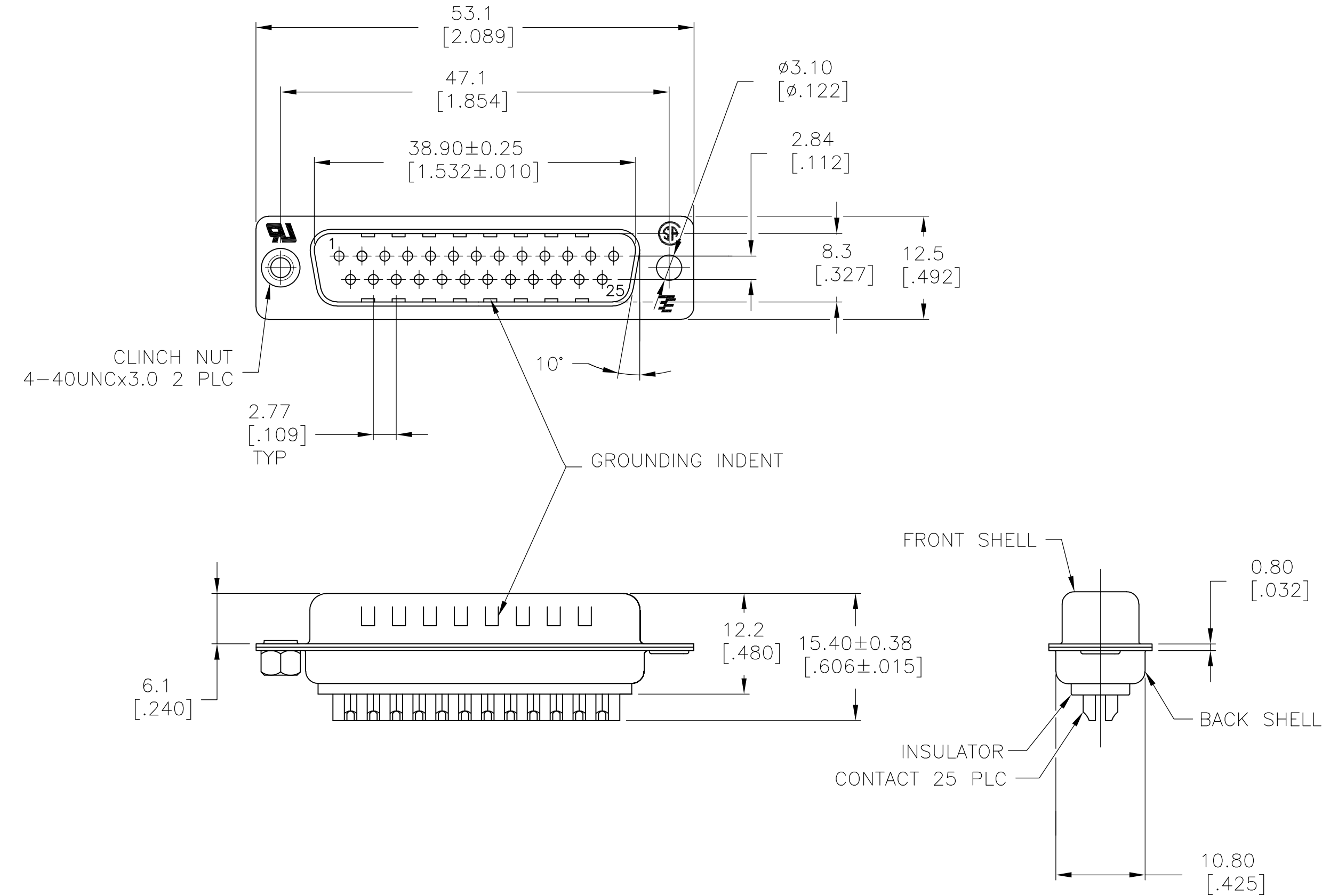
C

B

B

A

A



- 1

MATERIAL:
FRONT INSULATOR: PBT, 30 %GF, UL94V-0, BLACK COLOR
BACK INSULATOR: PBT, 30 %GF, UL94V-0, BLACK COLOR
CONTACT: BRASS
FRONT SHELL: STEEL
BACK SHELL: STEEL
CLINCH NUTS: BRASS
- 2

FINISH:
CONTACT: GOLD PLATING 0.00002[.0000008] MIN ON CONTACT AREA 0.00229 [.000090] MIN TIN-LEAD PLATING ALL OVER 0.00127[.000050] MIN NICKEL
- 3

CONTACT: GOLD PLATING 0.00076[.000030] MIN ON CONTACT AREA 0.00229 [.000090] MIN TIN-LEAD PLATING ALL OVER 0.00127[.000050] MIN NICKEL
- 4

SHELL: BRIGHT TIN 0.00241[.000095] MIN FULL SHELL
- 5

SHELL: BLUE ZINC: 0.00508[.000200] - 0.00762[.000300] OVER ENTIRE SHELL
- 6

CONTACT: GOLD PLATING 0.00002[.0000008] MIN ON CONTACT AREA 0.00229 [.000090] MIN HOT DIPPED TIN-COPPER PLATING ALL OVER 0.00127[.000050] MIN NICKEL.
- 7

CLINCH NUTS: NICKEL PLATING .00305-.00508[.000120-.000200]
- 8

SPECIFICATION
ELECTRICAL CHARACTERISTICS: CURRENT RATING: 3 AMPERES
DIELECTRIC WITHSTANDING VOLTAGE: AC 1000V r.m.s
INSULATION RESISTANCE: 5000 MEGOHMS MINIMUM AT DC 500V
CONTACT RESISTANCE: 10 MILLIOHMS MAXIMUM.
- 9

ROHS 2002/95/EC COMPLIANT
- 10

PLUG ASSEMBLY MATES WITH ANY 25 POSITION RECEPTACLE IN AMPLIMITE SERIES
SOLDER CUP WILL ACCOMMODATE 20 MAX AWG WIRE.
- 11

CONTACT: GOLD PLATING 0.00076[.000030] MIN ON CONTACT AREA 0.00229[.000090] MIN HOT DIPPED TIN-COPPER ALL OVER 0.00127[.000050] MIN NICKEL PLATING

| | | | | | | | |
|---|----------|----------------|-------------|-------------------|----------|--------|------------|
| 9 | 9 | STANDARD | NO | NO | 6 | 4 | 5-747912-4 |
| | 9 | STANDARD | YES | YES | 6 | 4 | 5-747912-7 |
| | 9 | STANDARD | NO | YES | 4 | 4 | 5-747912-5 |
| | 9 | STANDARD | NO | YES | 6 | 4 | 5-747912-2 |
| | OBSOLETE | STANDARD | NO | YES | 6 | 4 | 747912-8 |
| | OBSOLETE | STANDARD | YES | YES | 2 | 4 | 747912-7 |
| | OBSOLETE | STANDARD | NO | YES | 3 | 4 | 747912-5 |
| | OBSOLETE | STANDARD | NO | NO | 2 | 5 | 747912-4 |
| | OBSOLETE | STANDARD | NO | YES | 2 | 4 | 747912-2 |
| | | PACKAGING TYPE | CLINCH NUTS | GROUNDING INDENTS | CONTACTS | SHELLS | PART NO. |

| | | | | | | | |
|---|--|------------------------------|--|--------------------|------------------------|--------------------|--|
| THIS DRAWING IS A CONTROLLED DOCUMENT. DIMENSIONING AND TOLERANCING PER ASME Y14.5M-2009 | | DWN M.BINNER 03MAR03 | TE Connectivity | | | | |
| DIMENSIONS: mm [INCHES] | | CHK R.BENDORF 05MAR03 | | | | | |
| TOLERANCES UNLESS OTHERWISE SPECIFIED: 0 PLC ± - 1 PLC ± 0.25 2 PLC ± 0.13 3 PLC ± 0.05 4 PLC ± - ANGLES ± 4° | | APVD R.BENDORF 05MAR03 | NAME PLUG ASSEMBLY, SOLDER CUP, SIZE 3, 25 POSN, HD-20, AMPLIMITE | | | | |
| MATERIAL 1 | | PRODUCT SPEC - | - | | | | |
| FINISH SEE TABLE | | APPLICATION SPEC - | - | | | | |
| | | WEIGHT - | SIZE A2 | CAGE CODE 00779 | DRAWING NO C-747912 | RESTRICTED TO - | |
| | | CUSTOMER DRAWING | SCALE 2:1 | SHEET 1 of 1 | REV Y | | |

747912

Mouser Electronics

Authorized Distributor

Click to View Pricing, Inventory, Delivery & Lifecycle Information:

[TE Connectivity:](#)

[5-747912-5](#)