

4

3

2

1

THIS DRAWING IS UNPUBLISHED.

RELEASED FOR PUBLICATION

© COPYRIGHT

ALL RIGHTS RESERVED.

LOC

DIST


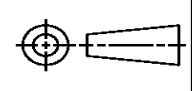
REVISIONS

P	LTR	DESCRIPTION	DATE	DWN	APVD
	A1	ECR-14-003325	11MAR2014	GK	HMR

REPLACED BY OCEAN STYLE APPLICATOR PART  
NUMBER 2266084-2

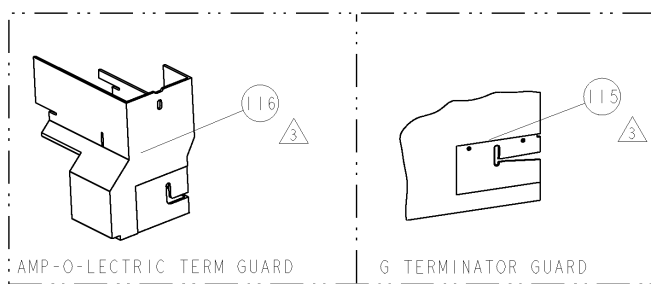
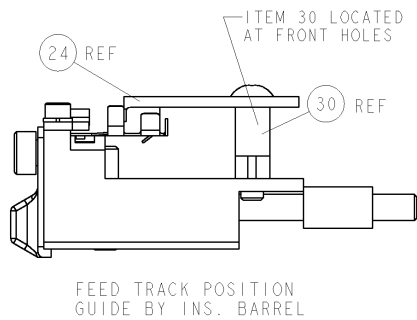
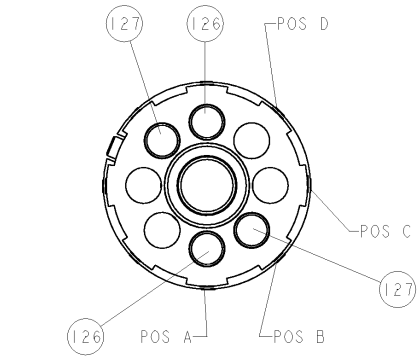
FOR REPLACEMENT PARTS FOR APPLICATOR 1852790  
REFER TO ADDITIONAL PAGE(S). SPARE PARTS KIT (IF LISTED)  
WILL REMAIN AVAILABLE.

THE REPLACEMENT OCEAN STYLE APPLICATOR HAS THE  
SAME TERMINATOR/PRESS INTERFACE AS APPLICATOR  
1852790

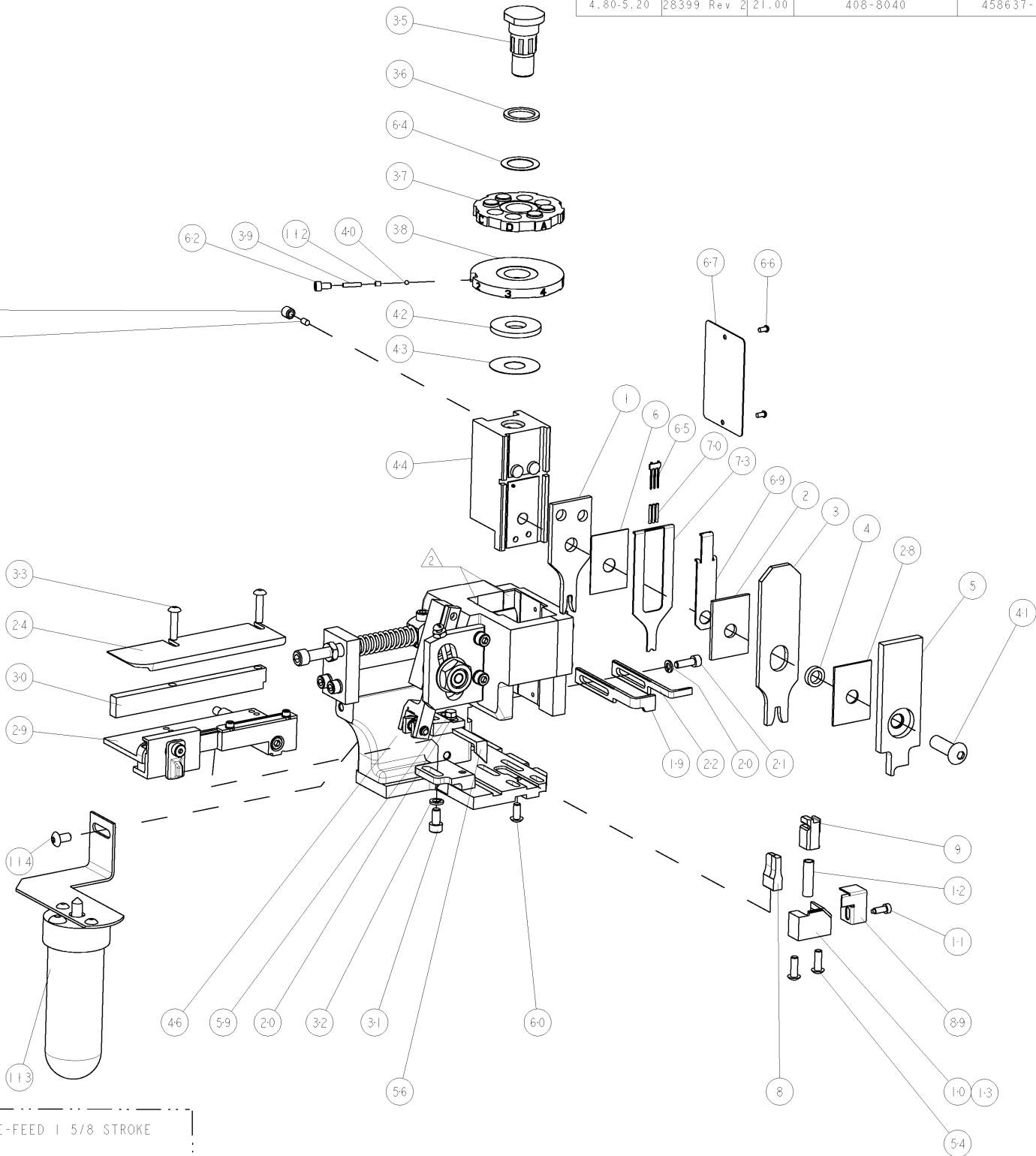
THIS DRAWING IS A CONTROLLED DOCUMENT.		DWN	GOPALAKRISHNA HV		 TE Connectivity	
		CHK	RAGHAVENDRA			
DIMENSIONS:		TOLERANCES UNLESS OTHERWISE SPECIFIED:		APVD	RAGHAVENDRA	
		0 PLC ±		NAME SIDE FEED HDM APPLICATOR		
		1 PLC ±				
		2 PLC ±				
		3 PLC ±				
4 PLC ±		4 PLC ±		SIZE A3		
ANGLES ±		FINISH				
MATERIAL		WEIGHT		DRAWING NO C- 1852790		
		CUSTOMER DRAWING		RESTRICTED TO		
		SCALE		SHEET 1 OF 2		
				REV A1		

8				7			
THIS DRAWING IS UNPUBLISHED.				RELEASED FOR PUBLICATION			
20				20			
© COPYRIGHT 20 BY TYCO ELECTRONICS CORPORATION. ALL RIGHTS RESERVED.							
PART NUMBER	REV	FIRST USED	POWER UNIT	FEED TYPE	DESCRIPTION		
1852790-1	A	122500-1	LEADMAKER	POST FEED	CUTS CARRIER		
1852790-2	A	565435-5	BENCH MODEL K	PRE FEED	CUTS CARRIER		
1852790-3	A	354500-1	BENCH MODEL G	PRE FEED	CUTS CARRIER		
1852790-6	A	122500-1	LEADMAKER	POST FEED	CONTINUOUS CARRIER		
7-1852790-7	A	-	-	-	SPARE PARTS		

- 1 RECOMMENDED SPARE PARTS  
2 GREASE LIGHTLY  
3 GUARD MUST BE IN PLACE WHEN OPERATING APPLICATOR IN A BENCH MACHINE



TERMINAL NAME: RECEPTACLE, ANGLED 6.3 X 0.8					
TE PN	LEAR	LEAR TERMINAL - LEAR CRIMP SPECS			
1949847	28399 213 011	PAD LTR	CRIMP HEIGHT		WIRE SIZE
-	-	A	1.70mm±.05/- .05[.067±.002/- .002]		2.5mm2
-	-	B	1.50mm±.05/- .05[.059±.002/- .002]		1.5mm2
-	-	C			-
-	-	D			-
		CRIMP	SIZE	TYPE	RANGE
-	-	WIRE	2.84mm [1.12]	F	1.5-2.5mm2
-	-	INSUL	3.80mm [1.50]	F	Ø2.200 - 3.700
WIRE STRIP LENGTH 4.80-5.20	TERM APPL SPEC 28399 Rev 2	FEED 21.00	APPLICATOR INSTRUCTIONS 408-8040		SET UP GAGE 458637-1



REVISIONS														
P	LTR	DESCRIPTION										DATE	DWN	APVD
A	RELEASED											20FEB2009	ARK	GB
-	2	2	2	2	-	1-354779-6	PIN, WIRE DISC, .3070					127		
-	2	2	2	2	-	9-354778-7	PIN, WIRE DISC, .2980					126		
-	-	-	REF	-	..	455749-1	GUARD WINDOW					116		
-	-	REF	-	-	..	679532-1	INSERT, GUARD					115		
-	-	-	1	-	-	2-21002-6	SCR, BTN SKT HD CAP 10-32 X .375					114		
-	-	-	1	-	..	1-465184-0	LUBRICATOR ASSY					113		
-	1	1	1	1	-	690603-1	SPRING ASSIST AMP-O-MATOR APPLICATOR					112		
-	1	1	1	1	-	1-21002-7	SCR, BTN SKT HD CAP 6-32 X .375					91		
-	1	1	1	1	-	318563-1	GUARD, FRONT CHIP					89		
-	1	1	1	1	-	1490525-1	DEPRESSOR, WIRE					73		
-	1	1	1	1	-	4088040	SF APPL INST 408-8040					72		
-	1	1	1	1	-	217238-1	GENERAL INSTRUCTION PKG					71		
-	3	3	3	3	-	2-23147-2	SPRING, COMPRESSION					70		
-	1	1	1	1	-	1490524-2	DEPRESSOR, SPACER					69		
-	1	1	1	1	-	461264-1	PLATE, IDENTIFICATION					67		
-	2	2	2	2	-	21017-2	SCREW, DRIVE					66		
-	1	1	1	1	-	1424350-1	HOLDER, PIN, WIRED					65		
-	1	1	1	1	-	986950-1	WASHER, FLAT PRECISION					64		
-	1	1	1	1	-	21009-2	SCR, SET, SELF LOCKING 1/4-20 X .250					63		
-	1	1	1	1	-	23030-1	SCR, SKT HD CAP 6-32 X .25					62		
-	1	1	1	1	-	22733-8	SCR, BHSC, SELF-LOCKING, 8-32 X .375					60		
-	1	1	1	1	-	2-22603-0	SCR, HEX HD CAP 8-32 X .312					59		
-	1	1	1	1	-	458537-2	PAWL, FEED					56		
-	2	2	2	2	-	2-21002-2	SCR, BTN SKT HD CAP 8-32 X .500					54		
-	-	1	-	-	..	690602-6	CAM, PRE FEED, 1 5/8					49		
-	-	-	1	-	..	690602-5	CAM, PRE FEED, 1 1/8					48		
-	1	-	-	1	-	690501-4	CAM, POST-FEED 1 5/8					47		
-	1	1	1	1	-	459456-1	APPL. BASIC SUB ASSY (SIDE WISE MQCA)					46		
-	1	1	1	1	-	690191-1	PLUG, NYLON					45		
-	1	1	1	1	-	819307-4	RAM, SIDE FEED					44		
-	1	1	1	1	-	690125-1	SHIM SUB-ASSY					43		
-	1	1	1	1	-	690124-1	WASHER, RAM (.115)					42		
-	1	1	1	1	-	7-21002-9	SCR, BTN SKT HD CAP 5/16-24 X 1.00					41		
-	1	1	1	1	-	23241-6	BALL, STEEL					40		
-	1	1	1	1	-	690170-1	SPRING, COMPRESSION					39		
-	1	1	1	1	-	1-690142-1	DISC, INSULATION					38		
-	1	1	1	1	-	354777-1	WIRE DISC, ASSEMBLY					37		
-	1	1	1	1	-	22480-5	SPRING, COMPRESSION					36		
-	1	1	1	1	-	690212-1	POST, RAM					35		
-	2	2	2	2	-	2-21002-4	SCR, BTN SKT HD CAP 8-32 X .750					33		
-	1	1	1	1	-	21024-5	WASHER, SPRG LOCK, REG NO 10					32		
-	1	1	1	1	-	3-21000-4	SCR, SKT HD CAP 10-32 X .375					31		
-	1	1	1	1	-	1320908-8	SPACER, STRIP GUIDE					30		
-	1	1	1	1	-	1633091-3	ASSEMBLY, STRIP GUIDE					29		
-	1	1	1	1	-	1-455888-0	SPACER, CRIMPER					28		
-	1	1	1	1	-	1320928-1	PLATE, STRIP GUIDE					24		
-	1	-	-	1	-	690472-2	STRIPPER					22		
-	1	1	1	1	-	2-21000-7	SCR, SKT HD CAP 8-32 X .500					21		
-	2	2	2	2	-	21024-4	WASHER, SPRG LOCK, REG NO 8					20		
-	-	1	1	-	-	691353-1	STRIPPER					19		
-	1	-	-	-	-	679625-1	SHEAR HOLDER, FRONT (NO CUT)					13		
-	1	1	1	1	-	3-22280-3	SPRING, COMPRESSION					12		
-	1	1	1	1	-	690461-1	STOP, SHEAR					11		
-	-	1	1	1	-	690459-1	SHEAR HOLDER, FRONT					10		
-	1	1	1	1	-	454276-1	FLOATING SHEAR, FRONT					9		
1	1	1	1	1	-	2-1633665-5	ANVIL, COMBINATION					8		
-	-	-	-	-	..	-						7		
-	1	1	1	1	-	455888-4	SPACER, CRIMPER					6		
-	1	1	1	1	-	1-455889-4	DEPRESSOR, SHEAR					5		
-	1	1	1	1	-	238011-2	BLOCK, CRIMPER SPACER					4		
1	1	1	1	1	-	1213077-5	CRIMPER, INSULATION PREMIUM					3		
-	1	1	1	1	-	1-455888-8	SPACER, CRIMPER					2		
1	1	1	1	1	-	1-1633664-2	CRIMPER, WIRE					1		

TYPICAL DIMENSIONS AND TOLERANCES FOR THIS DRAWING ORGANIZATION TYPICAL DIMENSIONS AND TOLERANCES									
---	--	--	--	--	--	--	--	--	--

# Mouser Electronics

Authorized Distributor

Click to View Pricing, Inventory, Delivery & Lifecycle Information:

[TE Connectivity:](#)

[1852790-1](#)