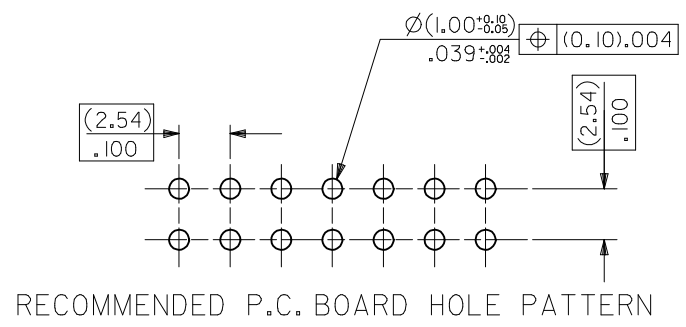
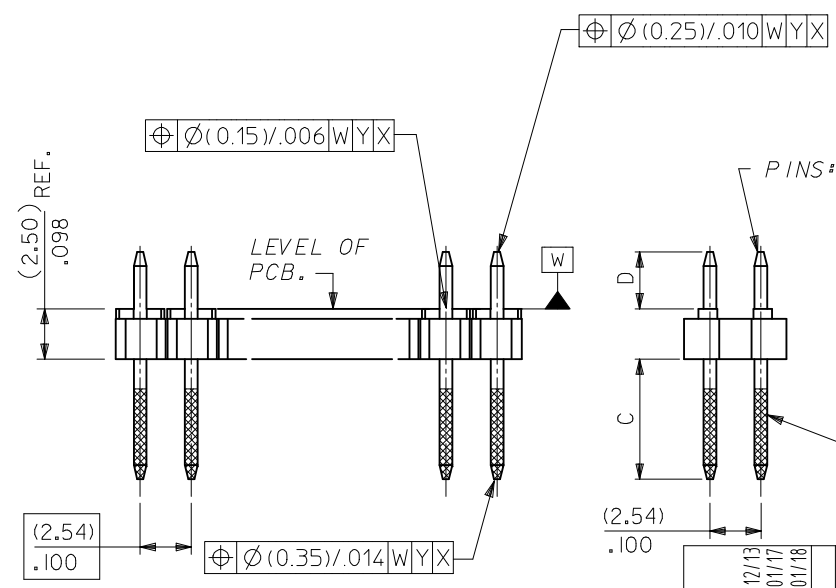


WAFER: 15% GLASS FILLED POLYESTER TO UL 94V-0. COLOUR: BLACK.

| CKT SIZE | DIM. "A" |       | DIM. "B" (+0.20 / -0.008) |       | CKT SIZE | DIM. "A" |       | DIM. "B" (+0.20 / -0.008) |       |
|----------|----------|-------|---------------------------|-------|----------|----------|-------|---------------------------|-------|
| 2X 1     |          |       | (2.54)                    | .100  | 2X21     | (50.80)  | 2.000 | (53.34)                   | 2.100 |
| 2X 2     | (2.54)   | .100  | (5.08)                    | .200  | 2X22     | (53.34)  | 2.100 | (55.88)                   | 2.200 |
| 2X 3     | (5.08)   | .200  | (7.62)                    | .300  | 2X23     | (55.88)  | 2.200 | (58.42)                   | 2.300 |
| 2X 4     | (7.62)   | .300  | (10.16)                   | .400  | 2X24     | (58.42)  | 2.300 | (60.96)                   | 2.400 |
| 2X 5     | (10.16)  | .400  | (12.70)                   | .500  | 2X25     | (60.96)  | 2.400 | (63.50)                   | 2.500 |
| 2X 6     | (12.70)  | .500  | (15.24)                   | .600  | 2X26     | (63.50)  | 2.500 | (66.04)                   | 2.600 |
| 2X 7     | (15.24)  | .600  | (17.78)                   | .700  | 2X27     | (66.04)  | 2.600 | (68.58)                   | 2.700 |
| 2X 8     | (17.78)  | .700  | (20.32)                   | .800  | 2X28     | (68.58)  | 2.700 | (71.12)                   | 2.800 |
| 2X 9     | (20.32)  | .800  | (22.86)                   | .900  | 2X29     | (71.12)  | 2.800 | (73.66)                   | 2.900 |
| 2X10     | (22.86)  | .900  | (25.40)                   | 1.000 | 2X30     | (73.66)  | 2.900 | (76.20)                   | 3.000 |
| 2X11     | (25.40)  | 1.000 | (27.94)                   | 1.100 | 2X31     | (76.20)  | 3.000 | (78.74)                   | 3.100 |
| 2X12     | (27.94)  | 1.100 | (30.48)                   | 1.200 | 2X32     | (78.74)  | 3.100 | (81.28)                   | 3.200 |
| 2X13     | (30.48)  | 1.200 | (33.02)                   | 1.300 | 2X33     | (81.28)  | 3.200 | (83.82)                   | 3.300 |
| 2X14     | (33.02)  | 1.300 | (35.56)                   | 1.400 | 2X34     | (83.82)  | 3.300 | (86.36)                   | 3.400 |
| 2X15     | (35.56)  | 1.400 | (38.10)                   | 1.500 | 2X35     | (86.36)  | 3.400 | (88.90)                   | 3.500 |
| 2X16     | (38.10)  | 1.500 | (40.64)                   | 1.600 | 2X36     | (88.90)  | 3.500 | (91.44)                   | 3.600 |
| 2X17     | (40.64)  | 1.600 | (43.18)                   | 1.700 | 2X37     | (91.44)  | 3.600 | (93.98)                   | 3.700 |
| 2X18     | (43.18)  | 1.700 | (45.72)                   | 1.800 | 2X38     | (93.98)  | 3.700 | (96.52)                   | 3.800 |
| 2X19     | (45.72)  | 1.800 | (48.26)                   | 1.900 | 2X39     | (96.52)  | 3.800 | (99.06)                   | 3.900 |
| 2X20     | (48.26)  | 1.900 | (50.80)                   | 2.000 | 2X40     | (99.06)  | 3.900 | (101.60)                  | 4.000 |



- NOTES
- PLEASE REFER TO SHT 2 FOR PLATING DETAILS.
  - PLEASE REFER TO SHT 3-8 FOR DIMENSIONS C & D.
  - RECOMMENDED PCB THICKNESS 1.60MM
  - PRODUCT SPECIFICATION: PS-99020-0001

ADD DATUM  
 EC NO: S2017-0354  
 DRWN: FCS00  
 CHKD: CGOH  
 APPR: KHLIM  
 2016/12/13  
 2017/01/17  
 2017/01/18

| QUALITY SYMBOLS | GENERAL TOLERANCES (UNLESS SPECIFIED)                |       |
|-----------------|--|-------|
|                 | mm   | INCH  |
| $F=0$           | 4 PLACES ± ---                                       | ± --- |
| $F=0$           | 3 PLACES ± ---                                       | ± --- |
| $F=0$           | 2 PLACES ± 0.20                                      | ± --- |
|                 | 1 PLACE ± ---  | ± --- |
|                 | 0 PLACE ± ---  | ± --- |
|                 | ANGULAR ± 3°   |       |
|                 | DRAFT WHERE APPLICABLE MUST REMAIN WITHIN DIMENSIONS |       |

| DIMENSION STYLE |   | SCALE                                   | DESIGN UNITS | THIRD ANGLE PROJECTION |
|-----------------|---|---|--------------|------------------------|
| MM ONLY         |   | NTS                                     | METRIC       |                        |
| DRAWN BY        | DATE  | TITLE                                   |              |                        |
| DB              | 1987/07/16  | C GRID III DUAL ROW STRAIGHT PIN HEADER |              |                        |
| CHECKED BY      | DATE  |   |              |                        |
| DB              | 1987/07/16  |   |              |                        |
| APPROVED BY     | DATE  |   |              |                        |
| MLONG           | 2012/02/24  |   |              |                        |
| MATERIAL NO.    | DOCUMENT NO.  |   |              |                        |
| SEE TABLE       | SD-90131-001  |   |              |                        |
| SIZE A3         | THIS DRAWING CONTAINS INFORMATION THAT IS PROPRIETARY TO MOLEX INCORPORATED AND SHOULD NOT BE USED WITHOUT WRITTEN PERMISSION |   |              |                        |

**molex**

SD-90131-001

SHEET NO. 1 OF 8

| PLATING OPTIONS | PLATING DESCRIPTION   |
|-----------------|---|
| A               | 3.00µm MIN TIN OVER 1.27MIN NICKEL OVERALL  |
| B               | 0.38µm MIN GOLD IN SELECTED AREA AND<br>3.00µm MIN TIN IN SELECTED AREA AND<br>1.30µm MIN NICKEL OVERALL                  |
| C               | 0.76µm MIN GOLD IN SELECTED AREA AND<br>3.00µm MIN TIN IN SELECTED AREA AND<br>1.30µm MIN NICKEL OVERALL                  |
| D               | 0.05-0.10µm GOLD FLASH IN SELECTED AREA AND<br>3.00µm MIN TIN IN SELECTED AREA AND<br>1.30µm MIN NICKEL OVERALL           |
| E               | 0.38µm MIN GOLD IN SELECTED AREA (2 SIDES) AND<br>3.00µm MIN TIN IN SELECTED AREA AND<br>1.30µm MIN NICKEL OVERALL        |
| F               | 0.76µm MIN GOLD IN SELECTED AREA (2 SIDES) AND<br>3.00µm MIN TIN IN SELECTED AREA AND<br>1.30µm MIN NICKEL OVERALL        |
| G               | 0.05-0.10µm GOLD FLASH IN SELECTED AREA (2 SIDES)<br>AND 3.00µm MIN TIN IN SELECTED AREA AND<br>1.30µm MIN NICKEL OVERALL |

|   |   |                                       |  |                                   |                  |                    |   |  |              |           |
|---|---|---------------------------------------|--|-----------------------------------|------------------|--------------------|---|--|--------------|-----------|
| <b>ADD DATUM</b><br>EC NO: S2017-0354<br>DRWN: FCS00 2016/12/13<br>CHKD: G0H 2017/01/17<br>APPR: KHLIM 2017/01/18 | QUALITY SYMBOLS<br>$\nabla = 0$<br>$\nabla = 0$<br>$\nabla = 0$ | GENERAL TOLERANCES (UNLESS SPECIFIED) |  | DIMENSION STYLE<br><b>MM ONLY</b> |                  | SCALE<br>NTS       | DESIGN UNITS<br>METRIC  | THIRD ANGLE PROJECTION                           |              |           |
|   |   |                                       |  | mm                                | INCH             | DRAWN BY<br>DB     | DATE<br>1987/07/16  | TITLE<br>C GRID III DUAL ROW STRAIGHT PIN HEADER |              |           |
|   |   | 4 PLACES                              | ± ---  | ± ---                             | CHECKED BY<br>DB | DATE<br>1987/07/16 |   |  |              |           |
|   |   | 3 PLACES                              | ± ---  | ± ---                             | APPROVED BY      | DATE<br>2012/02/24 | MATERIAL NO.  |  | DOCUMENT NO. | SHEET NO. |
| 2 PLACES  | ± 0.20  | ± ---                                 | DRAFT WHERE APPLICABLE MUST REMAIN WITHIN DIMENSIONS |                                   | SEE TABLE        |                    | SD-90131-001  |  | 2 OF 8       |           |
| 1 PLACE   | ± ---   | ± ---                                 | ANGULAR ± 3 °  |                                   | SIZE<br>A3       |                    | THIS DRAWING CONTAINS INFORMATION THAT IS PROPRIETARY TO MOLEX INCORPORATED AND SHOULD NOT BE USED WITHOUT WRITTEN PERMISSION |  |              |           |
| 0 PLACE   | ± ---   | ± ---                                 |  |                                   |                  |                    |   |  |              |           |



10 9 8 7 6 5 4 3 2 1

| CIRCUIT SIZE | PLATING TYPE A<br>PART NO. | PLATING TYPE E<br>PART NO. | PLATING TYPE F<br>PART NO. |
|--------------|----------------------------|----------------------------|----------------------------|
| 2 X 1        | 90131-0121                 | 90131-0761                 | 90131-0921                 |
| 2 X 2        | ▲ -0122                    | ▲ -0762                    | ▲ -0922                    |
| 2 X 3        | -0123                      | -0763                      | -0923                      |
| 2 X 4        | -0124                      | -0764                      | -0924                      |
| 2 X 5        | -0125                      | -0765                      | -0925                      |
| 2 X 6        | -0126                      | -0766                      | -0926                      |
| 2 X 7        | -0127                      | -0767                      | -0927                      |
| 2 X 8        | -0128                      | -0768                      | -0928                      |
| 2 X 9        | -0129                      | -0769                      | -0929                      |
| 2 X 10       | -0130                      | -0770                      | -0930                      |
| 2 X 11       | -0131                      | -0771                      | -0931                      |
| 2 X 12       | -0132                      | -0772                      | -0932                      |
| 2 X 13       | -0133                      | -0773                      | -0933                      |
| 2 X 14       | -0134                      | -0774                      | -0934                      |
| 2 X 15       | -0135                      | -0775                      | -0935                      |
| 2 X 16       | -0136                      | -0776                      | -0936                      |
| 2 X 17       | -0137                      | -0777                      | -0937                      |
| 2 X 18       | -0138                      | -0778                      | -0938                      |
| 2 X 19       | -0139                      | -0779                      | -0939                      |
| 2 X 20       | -0140                      | -0780                      | -0940                      |
| 2 X 21       | -0141                      | -0781                      | -0941                      |
| 2 X 22       | -0142                      | -0782                      | -0942                      |
| 2 X 23       | -0143                      | -0783                      | -0943                      |
| 2 X 24       | -0144                      | -0784                      | -0944                      |
| 2 X 25       | -0145                      | -0785                      | -0945                      |
| 2 X 26       | -0146                      | -0786                      | -0946                      |
| 2 X 27       | -0147                      | -0787                      | -0947                      |
| 2 X 28       | -0148                      | -0788                      | -0948                      |
| 2 X 29       | -0149                      | -0789                      | -0949                      |
| 2 X 30       | -0150                      | -0790                      | -0950                      |
| 2 X 31       | -0151                      | -0791                      | -0951                      |
| 2 X 32       | -0152                      | -0792                      | -0952                      |
| 2 X 33       | -0153                      | -0793                      | -0953                      |
| 2 X 34       | -0154                      | -0794                      | -0954                      |
| 2 X 35       | -0155                      | -0795                      | -0955                      |
| 2 X 36       | -0156                      | -0796                      | -0956                      |
| 2 X 37       | -0157                      | -0797                      | -0957                      |
| 2 X 38       | -0158                      | -0798                      | -0958                      |
| 2 X 39       | ▼ -0159                    | ▼ -0799                    | ▼ -0959                    |
| 2 X 40       | 90131-0160                 | 90131-0800                 | 90131-0960                 |

DIM  
C (±0.20)  
±.008  
(6.75)  
.266

DIM  
D (+0.20  
0.30)  
±.008  
±.012  
(2.90)  
.114

STANDARD PRODUCTS

|   |   |  |  |   |                    |  |                              |                        |                     |  |
|---|---|--|--|---|--------------------|--|------------------------------|------------------------|---------------------|--|
| <b>ADD DATUM</b><br>EC NO: S2017-0354<br>DRWN: FCS00 2016/12/13<br>CHKD: CGOH 2017/01/17<br>APPR: KHL IM 2017/01/18 | QUALITY SYMBOLS<br>$\nabla_A = 0$<br>$\nabla_B = 0$<br>$\nabla_C = 0$ | GENERAL TOLERANCES (UNLESS SPECIFIED)                |  | DIMENSION STYLE<br><b>MM ONLY</b>   |                    | SCALE<br>NTS                                     | DESIGN UNITS<br>METRIC       | THIRD ANGLE PROJECTION |                     |  |
|   |   |  |  | DRAWN BY<br>DB  | DATE<br>1987/07/16 | TITLE<br>C GRID III DUAL ROW STRAIGHT PIN HEADER |                              |                        |                     |  |
|   |   |  |  | CHECKED BY<br>DB  | DATE<br>1987/07/16 | APPROVED BY<br>MLONG                             |                              |                        |                     |  |
|   |   |  |  | MATERIAL NO.<br>SEE TABLE   |                    | DATE<br>2012/02/24                               | DOCUMENT NO.<br>SD-90131-001 |                        | SHEET NO.<br>3 OF 8 |  |
|   |   | DRAFT WHERE APPLICABLE MUST REMAIN WITHIN DIMENSIONS |  | THIS DRAWING CONTAINS INFORMATION THAT IS PROPRIETARY TO MOLEX INCORPORATED AND SHOULD NOT BE USED WITHOUT WRITTEN PERMISSION |                    |  |                              |                        |                     |  |

9 8 7 6 5 4 3 2 1

| CIRCUIT SIZE | PLATING TYPE A PART NO. | PLATING TYPE E PART NO. | PLATING TYPE F PART NO. |
|--------------|-------------------------|-------------------------|-------------------------|
| 2 X 1        | 90131-0041              | 90131-0681              | 90131-0841              |
| 2 X 2        | ▲ -0042                 | ▲ -0682                 | ▲ -0842                 |
| 2 X 3        | -0043                   | -0683                   | -0843                   |
| 2 X 4        | -0044                   | -0684                   | -0844                   |
| 2 X 5        | -0045                   | -0685                   | -0845                   |
| 2 X 6        | -0046                   | -0686                   | -0846                   |
| 2 X 7        | -0047                   | -0687                   | -0847                   |
| 2 X 8        | -0048                   | -0688                   | -0848                   |
| 2 X 9        | -0049                   | -0689                   | -0849                   |
| 2 X 10       | -0050                   | -0690                   | -0850                   |
| 2 X 11       | -0051                   | -0691                   | -0851                   |
| 2 X 12       | -0052                   | -0692                   | -0852                   |
| 2 X 13       | -0053                   | -0693                   | -0853                   |
| 2 X 14       | -0054                   | -0694                   | -0854                   |
| 2 X 15       | -0055                   | -0695                   | -0855                   |
| 2 X 16       | -0056                   | -0696                   | -0856                   |
| 2 X 17       | -0057                   | -0697                   | -0857                   |
| 2 X 18       | -0058                   | -0698                   | -0858                   |
| 2 X 19       | -0059                   | -0699                   | -0859                   |
| 2 X 20       | -0060                   | -0700                   | -0860                   |
| 2 X 21       | -0061                   | -0701                   | -0861                   |
| 2 X 22       | -0062                   | -0702                   | -0862                   |
| 2 X 23       | -0063                   | -0703                   | -0863                   |
| 2 X 24       | -0064                   | -0704                   | -0864                   |
| 2 X 25       | -0065                   | -0705                   | -0865                   |
| 2 X 26       | -0066                   | -0706                   | -0866                   |
| 2 X 27       | -0067                   | -0707                   | -0867                   |
| 2 X 28       | -0068                   | -0708                   | -0868                   |
| 2 X 29       | -0069                   | -0709                   | -0869                   |
| 2 X 30       | -0070                   | -0710                   | -0870                   |
| 2 X 31       | -0071                   | -0711                   | -0871                   |
| 2 X 32       | -0072                   | -0712                   | -0872                   |
| 2 X 33       | -0073                   | -0713                   | -0873                   |
| 2 X 34       | -0074                   | -0714                   | -0874                   |
| 2 X 35       | -0075                   | -0715                   | -0875                   |
| 2 X 36       | -0076                   | -0716                   | -0876                   |
| 2 X 37       | -0077                   | -0717                   | -0877                   |
| 2 X 38       | -0078                   | -0718                   | -0878                   |
| 2 X 39       | ▼ -0079                 | ▼ -0719                 | ▼ -0879                 |
| 2 X 40       | 90131-0080              | 90131-0720              | 90131-0880              |

DIM C (+0.20 / ±.008) (5.75) .226

DIM D (+0.20 / ±.008 / ±.012) (2.90) .114

| CIRCUIT SIZE | PLATING TYPE A PART NO. | PLATING TYPE E PART NO. | PLATING TYPE F PART NO. |
|--------------|-------------------------|-------------------------|-------------------------|
| 2 X 1        | 90131-0081              | 90131-0721              | 90131-0881              |
| 2 X 2        | ▲ -0082                 | ▲ -0722                 | ▲ -0882                 |
| 2 X 3        | -0083                   | -0723                   | -0883                   |
| 2 X 4        | -0084                   | -0724                   | -0884                   |
| 2 X 5        | -0085                   | -0725                   | -0885                   |
| 2 X 6        | -0086                   | -0726                   | -0886                   |
| 2 X 7        | -0087                   | -0727                   | -0887                   |
| 2 X 8        | -0088                   | -0728                   | -0888                   |
| 2 X 9        | -0089                   | -0729                   | -0889                   |
| 2 X 10       | -0090                   | -0730                   | -0890                   |
| 2 X 11       | -0091                   | -0731                   | -0891                   |
| 2 X 12       | -0092                   | -0732                   | -0892                   |
| 2 X 13       | -0093                   | -0733                   | -0893                   |
| 2 X 14       | -0094                   | -0734                   | -0894                   |
| 2 X 15       | -0095                   | -0735                   | -0895                   |
| 2 X 16       | -0096                   | -0736                   | -0896                   |
| 2 X 17       | -0097                   | -0737                   | -0897                   |
| 2 X 18       | -0098                   | -0738                   | -0898                   |
| 2 X 19       | -0099                   | -0739                   | -0899                   |
| 2 X 20       | -0100                   | -0740                   | -0900                   |
| 2 X 21       | -0101                   | -0741                   | -0901                   |
| 2 X 22       | -0102                   | -0742                   | -0902                   |
| 2 X 23       | -0103                   | -0743                   | -0903                   |
| 2 X 24       | -0104                   | -0744                   | -0904                   |
| 2 X 25       | -0105                   | -0745                   | -0905                   |
| 2 X 26       | -0106                   | -0746                   | -0906                   |
| 2 X 27       | -0107                   | -0747                   | -0907                   |
| 2 X 28       | -0108                   | -0748                   | -0908                   |
| 2 X 29       | -0109                   | -0749                   | -0909                   |
| 2 X 30       | -0110                   | -0750                   | -0910                   |
| 2 X 31       | -0111                   | -0751                   | -0911                   |
| 2 X 32       | -0112                   | -0752                   | -0912                   |
| 2 X 33       | -0113                   | -0753                   | -0913                   |
| 2 X 34       | -0114                   | -0754                   | -0914                   |
| 2 X 35       | -0115                   | -0755                   | -0915                   |
| 2 X 36       | -0116                   | -0756                   | -0916                   |
| 2 X 37       | -0117                   | -0757                   | -0917                   |
| 2 X 38       | -0118                   | -0758                   | -0918                   |
| 2 X 39       | ▼ -0119                 | ▼ -0759                 | ▼ -0919                 |
| 2 X 40       | 90131-0120              | 90131-0760              | 90131-0920              |

DIM C (+0.20 / ±.008) (5.75) .226

DIM D (+0.25 / ±.010) (4.50) .177

NON-STANDARD PRODUCTS

ADD DATUM  
EC NO: S2017-0354  
2016/12/13  
DRWN:FC500  
CHKD:GGH  
2017/01/17  
APPR:KHLIM  
2017/01/18

QUALITY SYMBOLS  
FA=0  
FG=0  
FB=0

GENERAL TOLERANCES (UNLESS SPECIFIED)

|          | mm     | INCH  |
|----------|--------|-------|
| 4 PLACES | ± ---  | ± --- |
| 3 PLACES | ± ---  | ± --- |
| 2 PLACES | ± 0.20 | ± --- |
| 1 PLACE  | ± ---  | ± --- |
| 0 PLACE  | ± ---  | ± --- |

ANGULAR ± 3 °  
DRAFT WHERE APPLICABLE  
MUST REMAIN WITHIN DIMENSIONS

DIMENSION STYLE  
MM ONLY

| DRAWN BY    | DATE       |
|-------------|------------|
| DB          | 1987/07/16 |
| CHECKED BY  | DATE       |
| DB          | 1987/07/16 |
| APPROVED BY | DATE       |
| MLONG       | 2012/02/24 |

MATERIAL NO.  
SEE TABLE

SCALE  
NTS

DESIGN UNITS  
METRIC

THIRD ANGLE PROJECTION

TITLE  
C GRID III DUAL ROW  
STRAIGHT PIN HEADER

**molex**

DOCUMENT NO.  
SD-90131-001

SHEET NO.  
4 OF 8

THIS DRAWING CONTAINS INFORMATION THAT IS PROPRIETARY TO MOLEX INCORPORATED AND SHOULD NOT BE USED WITHOUT WRITTEN PERMISSION

| CIRCUIT SIZE | PLATING TYPE A PART NO. | PLATING TYPE E PART NO. | PLATING TYPE F PART NO. |
|--------------|-------------------------|-------------------------|-------------------------|
| 2 X 1        | 90131-0161              | 90131-0801              | 90131-0961              |
| 2 X 2        | ▲ -0162                 | -0802                   | ▲ -0962                 |
| 2 X 3        | -0163                   | -0803                   | -0963                   |
| 2 X 4        | -0164                   | -0804                   | -0964                   |
| 2 X 5        | -0165                   | -0805                   | -0965                   |
| 2 X 6        | -0166                   | -0806                   | -0966                   |
| 2 X 7        | -0167                   | -0807                   | -0967                   |
| 2 X 8        | -0168                   | -0808                   | -0968                   |
| 2 X 9        | -0169                   | -0809                   | -0969                   |
| 2 X 10       | -0170                   | -0810                   | -0970                   |
| 2 X 11       | -0171                   | -0811                   | -0971                   |
| 2 X 12       | -0172                   | -0812                   | -0972                   |
| 2 X 13       | -0173                   | -0813                   | -0973                   |
| 2 X 14       | -0174                   | -0814                   | -0974                   |
| 2 X 15       | -0175                   | -0815                   | -0975                   |
| 2 X 16       | -0176                   | -0816                   | -0976                   |
| 2 X 17       | -0177                   | -0817                   | -0977                   |
| 2 X 18       | -0178                   | -0818                   | -0978                   |
| 2 X 19       | -0179                   | -0819                   | -0979                   |
| 2 X 20       | -0180                   | -0820                   | -0980                   |
| 2 X 21       | -0181                   | -0821                   | -0981                   |
| 2 X 22       | -0182                   | -0822                   | -0982                   |
| 2 X 23       | -0183                   | -0823                   | -0983                   |
| 2 X 24       | -0184                   | -0824                   | -0984                   |
| 2 X 25       | -0185                   | -0825                   | -0985                   |
| 2 X 26       | -0186                   | -0826                   | -0986                   |
| 2 X 27       | -0187                   | -0827                   | -0987                   |
| 2 X 28       | -0188                   | -0828                   | -0988                   |
| 2 X 29       | -0189                   | -0829                   | -0989                   |
| 2 X 30       | -0190                   | -0830                   | -0990                   |
| 2 X 31       | -0191                   | -0831                   | -0991                   |
| 2 X 32       | -0192                   | -0832                   | -0992                   |
| 2 X 33       | -0193                   | -0833                   | -0993                   |
| 2 X 34       | -0194                   | -0834                   | -0994                   |
| 2 X 35       | -0195                   | -0835                   | -0995                   |
| 2 X 36       | -0196                   | -0836                   | -0996                   |
| 2 X 37       | -0197                   | -0837                   | -0997                   |
| 2 X 38       | -0198                   | -0838                   | -0998                   |
| 2 X 39       | ▼ -0199                 | -0839                   | ▼ -0999                 |
| 2 X 40       | 90131-0200              | 90131-0840              | 90131-1000              |

DIM C (±0.20) ±.008 (6.75) .266

DIM D (±0.25) ±.010 (4.50) .177

NON-STANDARD PRODUCTS

|  |  |                                       |   |   |              |                        |
|--|--|---------------------------------------|---|---|--------------|------------------------|
| <b>ADD DATUM</b><br>EC NO: S2017-0354<br>DRWN:FC500 2016/12/13<br>CHKD:CGOH 2017/01/17<br>APPR:KHL JM 2017/01/18 | QUALITY SYMBOLS                                      | GENERAL TOLERANCES (UNLESS SPECIFIED) | DIMENSION STYLE   | SCALE                                   | DESIGN UNITS | THIRD ANGLE PROJECTION |
|  | $\nabla_A = 0$<br>$\nabla_C = 0$<br>$\nabla_F = 0$   | mm INCH                               | MM ONLY   | NTS                                     | METRIC       |                        |
|  |  | 4 PLACES ± --- ± ---                  | DRAWN BY DATE   | TITLE                                   |              |                        |
|  |  | 3 PLACES ± --- ± ---                  | DB 1987/07/16   | C GRID III DUAL ROW STRAIGHT PIN HEADER |              |                        |
|  | 2 PLACES ± 0.20 ± ---                                | CHECKED BY DATE                       |   |   |              |                        |
|  | 1 PLACE ± --- ± ---                                  | DB 1987/07/16                         |   |   |              |                        |
|  | 0 PLACE ± --- ± ---                                  | APPROVED BY DATE                      |   |   |              |                        |
|  | ANGULAR ± 3 °  | MLONG 2012/02/24                      |   |   |              |                        |
|  | DRAFT WHERE APPLICABLE MUST REMAIN WITHIN DIMENSIONS | MATERIAL NO.                          | SEE TABLE   |   | DOCUMENT NO. |                        |
|  |  | SIZE A3                               | THIS DRAWING CONTAINS INFORMATION THAT IS PROPRIETARY TO MOLEX INCORPORATED AND SHOULD NOT BE USED WITHOUT WRITTEN PERMISSION |   |              |                        |
|  |  |                                       |   |   | SD-90131-001 | SHEET NO. 5 OF 8       |

|   | 10 | 9            | 8                       | 7                       | 6                       | 5                       | 4            | 3                       | 2                       | 1                       |                         |   |
|---|----|--------------|-------------------------|-------------------------|-------------------------|-------------------------|--------------|-------------------------|-------------------------|-------------------------|-------------------------|---|
|   |    | CIRCUIT SIZE | PLATING TYPE B PART NO. | PLATING TYPE C PART NO. | PLATING TYPE D PART NO. | PLATING TYPE G PART NO. | CIRCUIT SIZE | PLATING TYPE B PART NO. | PLATING TYPE C PART NO. | PLATING TYPE D PART NO. | PLATING TYPE G PART NO. |   |
| F |    | 2 X 1        | 90131-0281              | 90131-0441              | 90131-0601              | 90131-1081              | 2 X 1        | 90131-0201              | 90131-0361              | 90131-0521              | 90131-1001              | F |
|   |    | 2 X 2        | ↑ -0282                 | ↑ -0442                 | ↑ -0602                 | ↑ -1082                 | 2 X 2        | ↑ -0202                 | ↑ -0362                 | ↑ -0522                 | ↑ -1002                 |   |
|   |    | 2 X 3        | -0283                   | -0443                   | -0603                   | -1083                   | 2 X 3        | -0203                   | -0363                   | -0523                   | -1003                   |   |
|   |    | 2 X 4        | -0284                   | -0444                   | -0604                   | -1084                   | 2 X 4        | -0204                   | -0364                   | -0524                   | -1004                   |   |
|   |    | 2 X 5        | -0285                   | -0445                   | -0605                   | -1085                   | 2 X 5        | -0205                   | -0365                   | -0525                   | -1005                   |   |
|   |    | 2 X 6        | -0286                   | -0446                   | -0606                   | -1086                   | 2 X 6        | -0206                   | -0366                   | -0526                   | -1006                   |   |
|   |    | 2 X 7        | -0287                   | -0447                   | -0607                   | -1087                   | 2 X 7        | -0207                   | -0367                   | -0527                   | -1007                   |   |
|   |    | 2 X 8        | -0288                   | -0448                   | -0608                   | -1088                   | 2 X 8        | -0208                   | -0368                   | -0528                   | -1008                   |   |
|   |    | 2 X 9        | -0289                   | -0449                   | -0609                   | -1089                   | 2 X 9        | -0209                   | -0369                   | -0529                   | -1009                   |   |
| E |    | 2 X 10       | -0290                   | -0450                   | -0610                   | -1090                   | 2 X 10       | -0210                   | -0370                   | -0530                   | -1010                   | E |
|   |    | 2 X 11       | -0291                   | -0451                   | -0611                   | -1091                   | 2 X 11       | -0211                   | -0371                   | -0531                   | -1011                   |   |
|   |    | 2 X 12       | -0292                   | -0452                   | -0612                   | -1092                   | 2 X 12       | -0212                   | -0372                   | -0532                   | -1012                   |   |
|   |    | 2 X 13       | -0293                   | -0453                   | -0613                   | -1093                   | 2 X 13       | -0213                   | -0373                   | -0533                   | -1013                   |   |
|   |    | 2 X 14       | -0294                   | -0454                   | -0614                   | -1094                   | 2 X 14       | -0214                   | -0374                   | -0534                   | -1014                   |   |
|   |    | 2 X 15       | -0295                   | -0455                   | -0615                   | -1095                   | 2 X 15       | -0215                   | -0375                   | -0535                   | -1015                   |   |
|   |    | 2 X 16       | -0296                   | -0456                   | -0616                   | -1096                   | 2 X 16       | -0216                   | -0376                   | -0536                   | -1016                   |   |
|   |    | 2 X 17       | -0297                   | -0457                   | -0617                   | -1097                   | 2 X 17       | -0217                   | -0377                   | -0537                   | -1017                   |   |
|   |    | 2 X 18       | -0298                   | -0458                   | -0618                   | -1098                   | 2 X 18       | -0218                   | -0378                   | -0538                   | -1018                   |   |
|   |    | 2 X 19       | -0299                   | -0459                   | -0619                   | -1099                   | 2 X 19       | -0219                   | -0379                   | -0539                   | -1019                   |   |
| D |    | 2 X 20       | -0300                   | -0460                   | -0620                   | -1100                   | 2 X 20       | -0220                   | -0380                   | -0540                   | -1020                   | D |
|   |    | 2 X 21       | -0301                   | -0461                   | -0621                   | -1101                   | 2 X 21       | -0221                   | -0381                   | -0541                   | -1021                   |   |
|   |    | 2 X 22       | -0302                   | -0462                   | -0622                   | -1102                   | 2 X 22       | -0222                   | -0382                   | -0542                   | -1022                   |   |
|   |    | 2 X 23       | -0303                   | -0463                   | -0623                   | -1103                   | 2 X 23       | -0223                   | -0383                   | -0543                   | -1023                   |   |
|   |    | 2 X 24       | -0304                   | -0464                   | -0624                   | -1104                   | 2 X 24       | -0224                   | -0384                   | -0544                   | -1024                   |   |
|   |    | 2 X 25       | -0305                   | -0465                   | -0625                   | -1105                   | 2 X 25       | -0225                   | -0385                   | -0545                   | -1025                   |   |
|   |    | 2 X 26       | -0306                   | -0466                   | -0626                   | -1106                   | 2 X 26       | -0226                   | -0386                   | -0546                   | -1026                   |   |
|   |    | 2 X 27       | -0307                   | -0467                   | -0627                   | -1107                   | 2 X 27       | -0227                   | -0387                   | -0547                   | -1027                   |   |
|   |    | 2 X 28       | -0308                   | -0468                   | -0628                   | -1108                   | 2 X 28       | -0228                   | -0388                   | -0548                   | -1028                   |   |
|   |    | 2 X 29       | -0309                   | -0469                   | -0629                   | -1109                   | 2 X 29       | -0229                   | -0389                   | -0549                   | -1029                   |   |
| C |    | 2 X 30       | -0310                   | -0470                   | -0630                   | -1110                   | 2 X 30       | -0230                   | -0390                   | -0550                   | -1030                   | C |
|   |    | 2 X 31       | -0311                   | -0471                   | -0631                   | -1111                   | 2 X 31       | -0231                   | -0391                   | -0551                   | -1031                   |   |
|   |    | 2 X 32       | -0312                   | -0472                   | -0632                   | -1112                   | 2 X 32       | -0232                   | -0392                   | -0552                   | -1032                   |   |
|   |    | 2 X 33       | -0313                   | -0473                   | -0633                   | -1113                   | 2 X 33       | -0233                   | -0393                   | -0553                   | -1033                   |   |
|   |    | 2 X 34       | -0314                   | -0474                   | -0634                   | -1114                   | 2 X 34       | -0234                   | -0394                   | -0554                   | -1034                   |   |
|   |    | 2 X 35       | -0315                   | -0475                   | -0635                   | -1115                   | 2 X 35       | -0235                   | -0395                   | -0555                   | -1035                   |   |
|   |    | 2 X 36       | -0316                   | -0476                   | -0636                   | -1116                   | 2 X 36       | -0236                   | -0396                   | -0556                   | -1036                   |   |
|   |    | 2 X 37       | -0317                   | -0477                   | -0637                   | -1117                   | 2 X 37       | -0237                   | -0397                   | -0557                   | -1037                   |   |
|   |    | 2 X 38       | -0318                   | -0478                   | -0638                   | -1118                   | 2 X 38       | -0238                   | -0398                   | -0558                   | -1038                   |   |
| B |    | 2 X 39       | ↓ -0319                 | ↓ -0479                 | ↓ -0639                 | ↓ -1119                 | 2 X 39       | ↓ -0239                 | ↓ -0399                 | ↓ -0559                 | ↓ -1039                 | B |
|   |    | 2 X 40       | 90131-0320              | 90131-0480              | 90131-0640              | 90131-1120              | 2 X 40       | 90131-0240              | 90131-0400              | 90131-0560              | 90131-1040              |   |

DIM C (+0.20 / -0.008) (6.75) .266

DIM D (+0.20 / -0.30 / +0.008 / -0.012) (2.90) .114

DIM C (+0.20 / -0.008) (5.75) .226

DIM D (+0.20 / -0.30 / +0.008 / -0.012) (2.90) .114

NON-STANDARD PRODUCTS  
NOT FOR GENERAL RELEASE

|                    |             |                 |             |
|--------------------|-------------|-----------------|-------------|
| ADD DATUM          | 2016/12/13  | 2017/01/17      | 2017/01/18  |
| IEC NO: S2017-0354 | DRWN:FC500  | CHKD:G0H        | APPR:KHL JM |
| REV                | DESCRIPTION | QUALITY SYMBOLS |             |
|                    |             | ▽=0             |             |
|                    |             | ▽=0             |             |
|                    |             | ▽=0             |             |

|  |              |              |   |
|--|--------------|--------------|---|
| GENERAL TOLERANCES (UNLESS SPECIFIED)                | DRAWN BY     | DATE         | TITLE                                   |
| 4 PLACES ± --- ± ---                                 | DB           | 1987/07/16   | C GRID III DUAL ROW STRAIGHT PIN HEADER |
| 3 PLACES ± --- ± ---                                 | CHECKED BY   | DATE         |   |
| 2 PLACES ± 0.20 ± ---                                | DB           | 1987/07/16   | <b>molex</b>                            |
| 1 PLACE ± --- ± ---                                  | APPROVED BY  | DATE         |   |
| 0 PLACE ± --- ± ---                                  | MLONG        | 2012/02/24   | SD-90131-001                            |
| ANGULAR ± 3 °  | MATERIAL NO. | DOCUMENT NO. | SHEET NO.                               |
| DRAFT WHERE APPLICABLE MUST REMAIN WITHIN DIMENSIONS | SEE TABLE    |              | 6 OF 8                                  |

|   |       |              |                        |
|---|-------|--------------|------------------------|
| DIMENSION STYLE   | SCALE | DESIGN UNITS | THIRD ANGLE PROJECTION |
| MM ONLY   | NTS   | METRIC       |                        |
| THIS DRAWING CONTAINS INFORMATION THAT IS PROPRIETARY TO MOLEX INCORPORATED AND SHOULD NOT BE USED WITHOUT WRITTEN PERMISSION |       |              |                        |

| CIRCUIT SIZE | PLATING TYPE B PART NO. | PLATING TYPE C PART NO. | PLATING TYPE D PART NO. | PLATING TYPE G PART NO. |
|--------------|-------------------------|-------------------------|-------------------------|-------------------------|
| 2 X 1        | 90131-0241              | 90131-0401              | 90131-0561              | 90131-1041              |
| 2 X 2        | ▲ -0242                 | ▲ -0402                 | ▲ -0562                 | ▲ -1042                 |
| 2 X 3        | ▲ -0243                 | ▲ -0403                 | ▲ -0563                 | ▲ -1043                 |
| 2 X 4        | ▲ -0244                 | ▲ -0404                 | ▲ -0564                 | ▲ -1044                 |
| 2 X 5        | ▲ -0245                 | ▲ -0405                 | ▲ -0565                 | ▲ -1045                 |
| 2 X 6        | ▲ -0246                 | ▲ -0406                 | ▲ -0566                 | ▲ -1046                 |
| 2 X 7        | ▲ -0247                 | ▲ -0407                 | ▲ -0567                 | ▲ -1047                 |
| 2 X 8        | ▲ -0248                 | ▲ -0408                 | ▲ -0568                 | ▲ -1048                 |
| 2 X 9        | ▲ -0249                 | ▲ -0409                 | ▲ -0569                 | ▲ -1049                 |
| 2 X 10       | ▲ -0250                 | ▲ -0410                 | ▲ -0570                 | ▲ -1050                 |
| 2 X 11       | ▲ -0251                 | ▲ -0411                 | ▲ -0571                 | ▲ -1051                 |
| 2 X 12       | ▲ -0252                 | ▲ -0412                 | ▲ -0572                 | ▲ -1052                 |
| 2 X 13       | ▲ -0253                 | ▲ -0413                 | ▲ -0573                 | ▲ -1053                 |
| 2 X 14       | ▲ -0254                 | ▲ -0414                 | ▲ -0574                 | ▲ -1054                 |
| 2 X 15       | ▲ -0255                 | ▲ -0415                 | ▲ -0575                 | ▲ -1055                 |
| 2 X 16       | ▲ -0256                 | ▲ -0416                 | ▲ -0576                 | ▲ -1056                 |
| 2 X 17       | ▲ -0257                 | ▲ -0417                 | ▲ -0577                 | ▲ -1057                 |
| 2 X 18       | ▲ -0258                 | ▲ -0418                 | ▲ -0578                 | ▲ -1058                 |
| 2 X 19       | ▲ -0259                 | ▲ -0419                 | ▲ -0579                 | ▲ -1059                 |
| 2 X 20       | ▲ -0260                 | ▲ -0420                 | ▲ -0580                 | ▲ -1060                 |
| 2 X 21       | ▲ -0261                 | ▲ -0421                 | ▲ -0581                 | ▲ -1061                 |
| 2 X 22       | ▲ -0262                 | ▲ -0422                 | ▲ -0582                 | ▲ -1062                 |
| 2 X 23       | ▲ -0263                 | ▲ -0423                 | ▲ -0583                 | ▲ -1063                 |
| 2 X 24       | ▲ -0264                 | ▲ -0424                 | ▲ -0584                 | ▲ -1064                 |
| 2 X 25       | ▲ -0265                 | ▲ -0425                 | ▲ -0585                 | ▲ -1065                 |
| 2 X 26       | ▲ -0266                 | ▲ -0426                 | ▲ -0586                 | ▲ -1066                 |
| 2 X 27       | ▲ -0267                 | ▲ -0427                 | ▲ -0587                 | ▲ -1067                 |
| 2 X 28       | ▲ -0268                 | ▲ -0428                 | ▲ -0588                 | ▲ -1068                 |
| 2 X 29       | ▲ -0269                 | ▲ -0429                 | ▲ -0589                 | ▲ -1069                 |
| 2 X 30       | ▲ -0270                 | ▲ -0430                 | ▲ -0590                 | ▲ -1070                 |
| 2 X 31       | ▲ -0271                 | ▲ -0431                 | ▲ -0591                 | ▲ -1071                 |
| 2 X 32       | ▲ -0272                 | ▲ -0432                 | ▲ -0592                 | ▲ -1072                 |
| 2 X 33       | ▲ -0273                 | ▲ -0433                 | ▲ -0593                 | ▲ -1073                 |
| 2 X 34       | ▲ -0274                 | ▲ -0434                 | ▲ -0594                 | ▲ -1074                 |
| 2 X 35       | ▲ -0275                 | ▲ -0435                 | ▲ -0595                 | ▲ -1075                 |
| 2 X 36       | ▲ -0276                 | ▲ -0436                 | ▲ -0596                 | ▲ -1076                 |
| 2 X 37       | ▲ -0277                 | ▲ -0437                 | ▲ -0597                 | ▲ -1077                 |
| 2 X 38       | ▲ -0278                 | ▲ -0438                 | ▲ -0598                 | ▲ -1078                 |
| 2 X 39       | ▲ -0279                 | ▲ -0439                 | ▲ -0599                 | ▲ -1079                 |
| 2 X 40       | 90131-0280              | 90131-0440              | 90131-0600              | 90131-1080              |

DIM C (±0.20) ±.008 (5.75) .226

DIM D (±0.25) ±.010 (4.50) .177

| CIRCUIT SIZE | PLATING TYPE B PART NO. | PLATING TYPE C PART NO. | PLATING TYPE D PART NO. | PLATING TYPE G PART NO. |
|--------------|-------------------------|-------------------------|-------------------------|-------------------------|
| 2 X 1        | 90131-0321              | 90131-0481              | 90131-0641              | 90131-1121              |
| 2 X 2        | ▲ -0322                 | ▲ -0482                 | ▲ -0642                 | ▲ -1122                 |
| 2 X 3        | ▲ -0323                 | ▲ -0483                 | ▲ -0643                 | ▲ -1123                 |
| 2 X 4        | ▲ -0324                 | ▲ -0484                 | ▲ -0644                 | ▲ -1124                 |
| 2 X 5        | ▲ -0325                 | ▲ -0485                 | ▲ -0645                 | ▲ -1125                 |
| 2 X 6        | ▲ -0326                 | ▲ -0486                 | ▲ -0646                 | ▲ -1126                 |
| 2 X 7        | ▲ -0327                 | ▲ -0487                 | ▲ -0647                 | ▲ -1127                 |
| 2 X 8        | ▲ -0328                 | ▲ -0488                 | ▲ -0648                 | ▲ -1128                 |
| 2 X 9        | ▲ -0329                 | ▲ -0489                 | ▲ -0649                 | ▲ -1129                 |
| 2 X 10       | ▲ -0330                 | ▲ -0490                 | ▲ -0650                 | ▲ -1130                 |
| 2 X 11       | ▲ -0331                 | ▲ -0491                 | ▲ -0651                 | ▲ -1131                 |
| 2 X 12       | ▲ -0332                 | ▲ -0492                 | ▲ -0652                 | ▲ -1132                 |
| 2 X 13       | ▲ -0333                 | ▲ -0493                 | ▲ -0653                 | ▲ -1133                 |
| 2 X 14       | ▲ -0334                 | ▲ -0494                 | ▲ -0654                 | ▲ -1134                 |
| 2 X 15       | ▲ -0335                 | ▲ -0495                 | ▲ -0655                 | ▲ -1135                 |
| 2 X 16       | ▲ -0336                 | ▲ -0496                 | ▲ -0656                 | ▲ -1136                 |
| 2 X 17       | ▲ -0337                 | ▲ -0497                 | ▲ -0657                 | ▲ -1137                 |
| 2 X 18       | ▲ -0338                 | ▲ -0498                 | ▲ -0658                 | ▲ -1138                 |
| 2 X 19       | ▲ -0339                 | ▲ -0499                 | ▲ -0659                 | ▲ -1139                 |
| 2 X 20       | ▲ -0340                 | ▲ -0500                 | ▲ -0660                 | ▲ -1140                 |
| 2 X 21       | ▲ -0341                 | ▲ -0501                 | ▲ -0661                 | ▲ -1141                 |
| 2 X 22       | ▲ -0342                 | ▲ -0502                 | ▲ -0662                 | ▲ -1142                 |
| 2 X 23       | ▲ -0343                 | ▲ -0503                 | ▲ -0663                 | ▲ -1143                 |
| 2 X 24       | ▲ -0344                 | ▲ -0504                 | ▲ -0664                 | ▲ -1144                 |
| 2 X 25       | ▲ -0345                 | ▲ -0505                 | ▲ -0665                 | ▲ -1145                 |
| 2 X 26       | ▲ -0346                 | ▲ -0506                 | ▲ -0666                 | ▲ -1146                 |
| 2 X 27       | ▲ -0347                 | ▲ -0507                 | ▲ -0667                 | ▲ -1147                 |
| 2 X 28       | ▲ -0348                 | ▲ -0508                 | ▲ -0668                 | ▲ -1148                 |
| 2 X 29       | ▲ -0349                 | ▲ -0509                 | ▲ -0669                 | ▲ -1149                 |
| 2 X 30       | ▲ -0350                 | ▲ -0510                 | ▲ -0670                 | ▲ -1150                 |
| 2 X 31       | ▲ -0351                 | ▲ -0511                 | ▲ -0671                 | ▲ -1151                 |
| 2 X 32       | ▲ -0352                 | ▲ -0512                 | ▲ -0672                 | ▲ -1152                 |
| 2 X 33       | ▲ -0353                 | ▲ -0513                 | ▲ -0673                 | ▲ -1153                 |
| 2 X 34       | ▲ -0354                 | ▲ -0514                 | ▲ -0674                 | ▲ -1154                 |
| 2 X 35       | ▲ -0355                 | ▲ -0515                 | ▲ -0675                 | ▲ -1155                 |
| 2 X 36       | ▲ -0356                 | ▲ -0516                 | ▲ -0676                 | ▲ -1156                 |
| 2 X 37       | ▲ -0357                 | ▲ -0517                 | ▲ -0677                 | ▲ -1157                 |
| 2 X 38       | ▲ -0358                 | ▲ -0518                 | ▲ -0678                 | ▲ -1158                 |
| 2 X 39       | ▲ -0359                 | ▲ -0519                 | ▲ -0679                 | ▲ -1159                 |
| 2 X 40       | 90131-0360              | 90131-0520              | 90131-0680              | 90131-1160              |

DIM C (±0.20) ±.008 (6.75) .266

DIM D (±0.25) ±.010 (4.50) .177

**NON-STANDARD PRODUCTS  
NOT FOR GENERAL RELEASE**

|                   |             |                 |
|-------------------|-------------|-----------------|
| ADD DATUM         | 2016/12/13  | QUALITY SYMBOLS |
| EC NO: S2017-0354 | 2017/01/17  | ▽=0             |
| DRWN:FC00         | 2017/01/17  | ▽=0             |
| CHKD:CG0H         | 2017/01/18  | ▽=0             |
| APPR:KHLIM        |             |                 |
| REV               | DESCRIPTION |                 |

| GENERAL TOLERANCES (UNLESS SPECIFIED)                |        |
|--|--------|
| 4 PLACES   | ± ---  |
| 3 PLACES   | ± ---  |
| 2 PLACES   | ± 0.20 |
| 1 PLACE  | ± ---  |
| 0 PLACE  | ± ---  |
| ANGULAR ± 3°   |        |
| DRAFT WHERE APPLICABLE MUST REMAIN WITHIN DIMENSIONS |        |

| DIMENSION STYLE |            |
|-----------------|------------|
| MM ONLY         |            |
| DRAWN BY        | DATE       |
| DB              | 1987/07/16 |
| CHECKED BY      | DATE       |
| DB              | 1987/07/16 |
| APPROVED BY     | DATE       |
| MLONG           | 2012/02/24 |
| MATERIAL NO.    |            |
| SEE TABLE       |            |
| SIZE            |            |
| A3              |            |

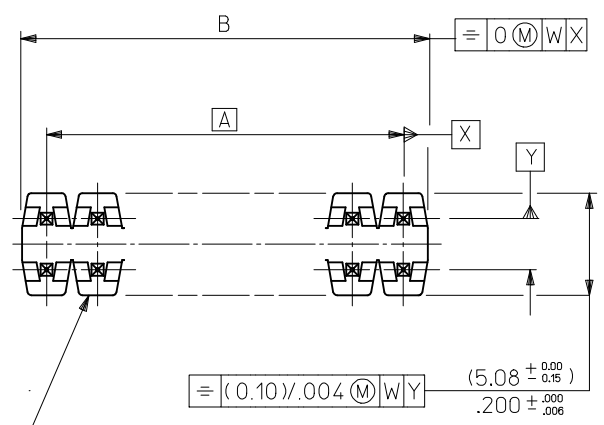
|   |              |                        |
|---|--------------|------------------------|
| SCALE   | DESIGN UNITS | THIRD ANGLE PROJECTION |
| NTS   | METRIC       |                        |
| TITLE   |              |                        |
| C GRID III DUAL ROW STRAIGHT PIN HEADER   |              |                        |
| DOCUMENT NO.  |              | SHEET NO.              |
| SD-90131-001  |              | 7 OF 8                 |
| THIS DRAWING CONTAINS INFORMATION THAT IS PROPRIETARY TO MOLEX INCORPORATED AND SHOULD NOT BE USED WITHOUT WRITTEN PERMISSION |              |                        |

| CIRCUIT SIZE | PLATING TYPE A PART NO. | PIN PART NUMBER | WAFER PART NUMBER | DIM C <sup>(±0.20)</sup> ±.008 | DIM D <sup>(±0.30)</sup> ±.008<br>-.012 |
|--------------|-------------------------|-----------------|-------------------|--------------------------------|---|
| 2 X 6        | 90131-3126              | 90129-2008      | 90131-0040        | (14.60)<br>.575                | (2.38)<br>.094                          |
| 2 X 36       | 90131-3128              | 90129-2008      | 90131-0040        | (14.60)<br>.575                | (2.38)<br>.094                          |
| 2 X 40       | 90131-3127              | 90129-2008      | 90131-0040        | (14.60)<br>.575                | (2.38)<br>.094                          |

**STANDARD PRODUCTS**

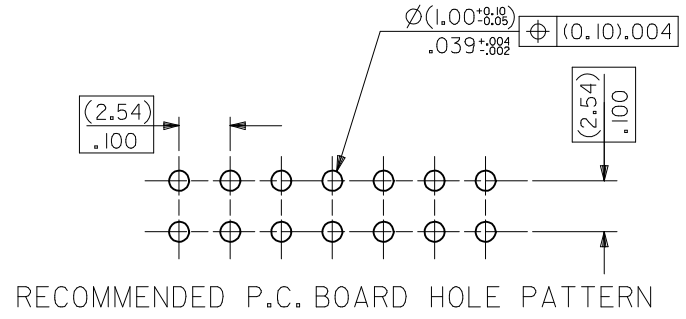
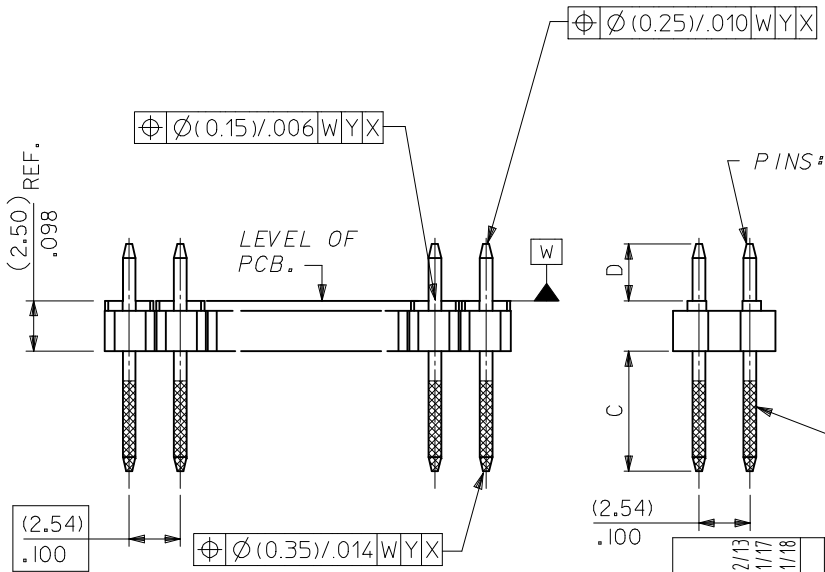
|   |  |                    |                 |  |   |                                   |            |  |                        |                        |  |  |
|---|--|--------------------|-----------------|--|---|-----------------------------------|------------|--|------------------------|------------------------|--|--|
| ADD DATUM<br>EC NO: S2017-0354<br>DRWN:FC500<br>CHKD:CGOH<br>APPR:KHLIM | 2016/12/13<br>2017/01/17<br>2017/01/18 | DESCRIPTION<br>REV | QUALITY SYMBOLS | GENERAL TOLERANCES (UNLESS SPECIFIED)                |   | DIMENSION STYLE<br><b>MM ONLY</b> |            | SCALE<br>NTS   | DESIGN UNITS<br>METRIC | THIRD ANGLE PROJECTION |  |  |
|   |  |                    | ▽=0             | mm   | INCH  | DRAWN BY                          | DATE       | TITLE<br><b>C GRID III DUAL ROW STRAIGHT PIN HEADER</b>    |                        |                        |  |  |
|   |  |                    | ▽=0             | 4 PLACES ±---  | ±---  | DB                                | 1987/07/16 |  |                        |                        |  |  |
|   |  |                    | ▽=0             | 3 PLACES ±---  | ±---  | CHECKED BY                        | DATE       | <b>molex</b><br>DOCUMENT NO. SD-90131-001 SHEET NO. 8 OF 8 |                        |                        |  |  |
| ▽=0   | 2 PLACES ±0.20                         | ±---               | DB              | 1987/07/16   |   |                                   |            |  |                        |                        |  |  |
|   | 1 PLACE ±---                           | ±---               | APPROVED BY     | DATE   | THIS DRAWING CONTAINS INFORMATION THAT IS PROPRIETARY TO MOLEX INCORPORATED AND SHOULD NOT BE USED WITHOUT WRITTEN PERMISSION |                                   |            |  |                        |                        |  |  |
|   | 0 PLACE ±---                           | ±---               | MLONG           | 2012/02/24   |   |                                   |            |  |                        |                        |  |  |
|   |  |                    | ANGULAR ± 3 °   | DRAFT WHERE APPLICABLE MUST REMAIN WITHIN DIMENSIONS |   | MATERIAL NO.<br><b>SEE TABLE</b>  |            |  |                        |                        |  |  |
|   |  |                    |                 |  |   | SIZE<br><b>A3</b>                 |            |  |                        |                        |  |  |





WAFER: 15% GLASS FILLED POLYESTER TO UL 94V-0. COLOUR: BLACK.

| CKT SIZE | DIM. "A" |       | DIM. "B" (+0.20 / -0.008) |       | CKT SIZE | DIM. "A" |       | DIM. "B" (+0.20 / -0.008) |       |
|----------|----------|-------|---------------------------|-------|----------|----------|-------|---------------------------|-------|
| 2X 1     |          |       | (2.54)                    | .100  | 2X21     | (50.80)  | 2.000 | (53.34)                   | 2.100 |
| 2X 2     | (2.54)   | .100  | (5.08)                    | .200  | 2X22     | (53.34)  | 2.100 | (55.88)                   | 2.200 |
| 2X 3     | (5.08)   | .200  | (7.62)                    | .300  | 2X23     | (55.88)  | 2.200 | (58.42)                   | 2.300 |
| 2X 4     | (7.62)   | .300  | (10.16)                   | .400  | 2X24     | (58.42)  | 2.300 | (60.96)                   | 2.400 |
| 2X 5     | (10.16)  | .400  | (12.70)                   | .500  | 2X25     | (60.96)  | 2.400 | (63.50)                   | 2.500 |
| 2X 6     | (12.70)  | .500  | (15.24)                   | .600  | 2X26     | (63.50)  | 2.500 | (66.04)                   | 2.600 |
| 2X 7     | (15.24)  | .600  | (17.78)                   | .700  | 2X27     | (66.04)  | 2.600 | (68.58)                   | 2.700 |
| 2X 8     | (17.78)  | .700  | (20.32)                   | .800  | 2X28     | (68.58)  | 2.700 | (71.12)                   | 2.800 |
| 2X 9     | (20.32)  | .800  | (22.86)                   | .900  | 2X29     | (71.12)  | 2.800 | (73.66)                   | 2.900 |
| 2X10     | (22.86)  | .900  | (25.40)                   | 1.000 | 2X30     | (73.66)  | 2.900 | (76.20)                   | 3.000 |
| 2X11     | (25.40)  | 1.000 | (27.94)                   | 1.100 | 2X31     | (76.20)  | 3.000 | (78.74)                   | 3.100 |
| 2X12     | (27.94)  | 1.100 | (30.48)                   | 1.200 | 2X32     | (78.74)  | 3.100 | (81.28)                   | 3.200 |
| 2X13     | (30.48)  | 1.200 | (33.02)                   | 1.300 | 2X33     | (81.28)  | 3.200 | (83.82)                   | 3.300 |
| 2X14     | (33.02)  | 1.300 | (35.56)                   | 1.400 | 2X34     | (83.82)  | 3.300 | (86.36)                   | 3.400 |
| 2X15     | (35.56)  | 1.400 | (38.10)                   | 1.500 | 2X35     | (86.36)  | 3.400 | (88.90)                   | 3.500 |
| 2X16     | (38.10)  | 1.500 | (40.64)                   | 1.600 | 2X36     | (88.90)  | 3.500 | (91.44)                   | 3.600 |
| 2X17     | (40.64)  | 1.600 | (43.18)                   | 1.700 | 2X37     | (91.44)  | 3.600 | (93.98)                   | 3.700 |
| 2X18     | (43.18)  | 1.700 | (45.72)                   | 1.800 | 2X38     | (93.98)  | 3.700 | (96.52)                   | 3.800 |
| 2X19     | (45.72)  | 1.800 | (48.26)                   | 1.900 | 2X39     | (96.52)  | 3.800 | (99.06)                   | 3.900 |
| 2X20     | (48.26)  | 1.900 | (50.80)                   | 2.000 | 2X40     | (99.06)  | 3.900 | (101.60)                  | 4.000 |



- NOTES
- PLEASE REFER TO SHT 2 FOR PLATING DETAILS.
  - PLEASE REFER TO SHT 3-8 FOR DIMENSIONS C & D.
  - RECOMMENDED PCB THICKNESS 1.60MM
  - PRODUCT SPECIFICATION: PS-99020-0001

ADD DATUM  
 EC NO: S2017-0354  
 DRWN: FCS00  
 CHK: CGOH  
 APPR: KHLIM  
 2016/12/13  
 2017/01/17  
 2017/01/18

| QUALITY SYMBOLS | GENERAL TOLERANCES (UNLESS SPECIFIED)                |       |
|-----------------|--|-------|
|                 | mm   | INCH  |
| $F=0$           | 4 PLACES ± ---                                       | ± --- |
| $F=0$           | 3 PLACES ± ---                                       | ± --- |
| $F=0$           | 2 PLACES ± 0.20                                      | ± --- |
|                 | 1 PLACE ± ---  | ± --- |
|                 | 0 PLACE ± ---  | ± --- |
|                 | ANGULAR ± 3°   |       |
|                 | DRAFT WHERE APPLICABLE MUST REMAIN WITHIN DIMENSIONS |       |

| DIMENSION STYLE |   | SCALE                                   | DESIGN UNITS | THIRD ANGLE PROJECTION |
|-----------------|---|---|--------------|------------------------|
| MM ONLY         |   | NTS                                     | METRIC       |                        |
| DRAWN BY        | DATE  | TITLE                                   |              |                        |
| DB              | 1987/07/16  | C GRID III DUAL ROW STRAIGHT PIN HEADER |              |                        |
| CHECKED BY      | DATE  |   |              |                        |
| DB              | 1987/07/16  |   |              |                        |
| APPROVED BY     | DATE  |   |              |                        |
| MLONG           | 2012/02/24  |   |              |                        |
| MATERIAL NO.    | DOCUMENT NO.  |   |              |                        |
| SEE TABLE       | SD-90131-001  |   |              |                        |
| SIZE A3         | THIS DRAWING CONTAINS INFORMATION THAT IS PROPRIETARY TO MOLEX INCORPORATED AND SHOULD NOT BE USED WITHOUT WRITTEN PERMISSION |   |              |                        |

**molex**

SD-90131-001

SHEET NO. 1 OF 8

| PLATING OPTIONS | PLATING DESCRIPTION   |
|-----------------|---|
| A               | 3.00µm MIN TIN OVER 1.27MIN NICKEL OVERALL  |
| B               | 0.38µm MIN GOLD IN SELECTED AREA AND<br>3.00µm MIN TIN IN SELECTED AREA AND<br>1.30µm MIN NICKEL OVERALL                  |
| C               | 0.76µm MIN GOLD IN SELECTED AREA AND<br>3.00µm MIN TIN IN SELECTED AREA AND<br>1.30µm MIN NICKEL OVERALL                  |
| D               | 0.05-0.10µm GOLD FLASH IN SELECTED AREA AND<br>3.00µm MIN TIN IN SELECTED AREA AND<br>1.30µm MIN NICKEL OVERALL           |
| E               | 0.38µm MIN GOLD IN SELECTED AREA (2 SIDES) AND<br>3.00µm MIN TIN IN SELECTED AREA AND<br>1.30µm MIN NICKEL OVERALL        |
| F               | 0.76µm MIN GOLD IN SELECTED AREA (2 SIDES) AND<br>3.00µm MIN TIN IN SELECTED AREA AND<br>1.30µm MIN NICKEL OVERALL        |
| G               | 0.05-0.10µm GOLD FLASH IN SELECTED AREA (2 SIDES)<br>AND 3.00µm MIN TIN IN SELECTED AREA AND<br>1.30µm MIN NICKEL OVERALL |

|   |   |  |              |   |                    |  |                        |                              |                     |
|---|---|--|--------------|---|--------------------|--|------------------------|------------------------------|---------------------|
| <b>ADD DATUM</b><br>EC NO: S2017-0354<br>DRWN: FCS00 2016/12/13<br>CHKD: G0H 2017/01/17<br>APPR: KHLIM 2017/01/18 | QUALITY SYMBOLS<br>$\nabla = 0$<br>$\nabla = 0$<br>$\nabla = 0$ | GENERAL TOLERANCES (UNLESS SPECIFIED)                |              | DIMENSION STYLE<br><b>MM ONLY</b>   |                    | SCALE<br>NTS                                     | DESIGN UNITS<br>METRIC | THIRD ANGLE PROJECTION       |                     |
|   |   | 4 PLACES ± --- ± ---                                 | mm INCH      | DRAWN BY<br>DB  | DATE<br>1987/07/16 | TITLE<br>C GRID III DUAL ROW STRAIGHT PIN HEADER |                        |                              |                     |
|   |   | 3 PLACES ± --- ± ---                                 | ± 0.20 ± --- | CHECKED BY<br>DB  | DATE<br>1987/07/16 | <b>molex</b>                                     |                        |                              |                     |
|   |   | 2 PLACES ± 0.20 ± ---                                | ± --- ± ---  | APPROVED BY<br>MLONG  | DATE<br>2012/02/24 | MATERIAL NO.<br>SEE TABLE                        |                        | DOCUMENT NO.<br>SD-90131-001 | SHEET NO.<br>2 OF 8 |
| 1 PLACE ± --- ± ---   |   | ANGULAR ± 3 °  |              | THIS DRAWING CONTAINS INFORMATION THAT IS PROPRIETARY TO MOLEX INCORPORATED AND SHOULD NOT BE USED WITHOUT WRITTEN PERMISSION |                    |  |                        |                              |                     |
| 0 PLACE ± --- ± ---   |   | DRAFT WHERE APPLICABLE MUST REMAIN WITHIN DIMENSIONS |              |   |                    |  |                        |                              |                     |

10 9 8 7 6 5 4 3 2 1

| CIRCUIT SIZE | PLATING TYPE A<br>PART NO. | PLATING TYPE E<br>PART NO. | PLATING TYPE F<br>PART NO. |
|--------------|----------------------------|----------------------------|----------------------------|
| 2 X 1        | 90131-0121                 | 90131-0761                 | 90131-0921                 |
| 2 X 2        | ▲ -0122                    | ▲ -0762                    | ▲ -0922                    |
| 2 X 3        | -0123                      | -0763                      | -0923                      |
| 2 X 4        | -0124                      | -0764                      | -0924                      |
| 2 X 5        | -0125                      | -0765                      | -0925                      |
| 2 X 6        | -0126                      | -0766                      | -0926                      |
| 2 X 7        | -0127                      | -0767                      | -0927                      |
| 2 X 8        | -0128                      | -0768                      | -0928                      |
| 2 X 9        | -0129                      | -0769                      | -0929                      |
| 2 X 10       | -0130                      | -0770                      | -0930                      |
| 2 X 11       | -0131                      | -0771                      | -0931                      |
| 2 X 12       | -0132                      | -0772                      | -0932                      |
| 2 X 13       | -0133                      | -0773                      | -0933                      |
| 2 X 14       | -0134                      | -0774                      | -0934                      |
| 2 X 15       | -0135                      | -0775                      | -0935                      |
| 2 X 16       | -0136                      | -0776                      | -0936                      |
| 2 X 17       | -0137                      | -0777                      | -0937                      |
| 2 X 18       | -0138                      | -0778                      | -0938                      |
| 2 X 19       | -0139                      | -0779                      | -0939                      |
| 2 X 20       | -0140                      | -0780                      | -0940                      |
| 2 X 21       | -0141                      | -0781                      | -0941                      |
| 2 X 22       | -0142                      | -0782                      | -0942                      |
| 2 X 23       | -0143                      | -0783                      | -0943                      |
| 2 X 24       | -0144                      | -0784                      | -0944                      |
| 2 X 25       | -0145                      | -0785                      | -0945                      |
| 2 X 26       | -0146                      | -0786                      | -0946                      |
| 2 X 27       | -0147                      | -0787                      | -0947                      |
| 2 X 28       | -0148                      | -0788                      | -0948                      |
| 2 X 29       | -0149                      | -0789                      | -0949                      |
| 2 X 30       | -0150                      | -0790                      | -0950                      |
| 2 X 31       | -0151                      | -0791                      | -0951                      |
| 2 X 32       | -0152                      | -0792                      | -0952                      |
| 2 X 33       | -0153                      | -0793                      | -0953                      |
| 2 X 34       | -0154                      | -0794                      | -0954                      |
| 2 X 35       | -0155                      | -0795                      | -0955                      |
| 2 X 36       | -0156                      | -0796                      | -0956                      |
| 2 X 37       | -0157                      | -0797                      | -0957                      |
| 2 X 38       | -0158                      | -0798                      | -0958                      |
| 2 X 39       | ▼ -0159                    | ▼ -0799                    | ▼ -0959                    |
| 2 X 40       | 90131-0160                 | 90131-0800                 | 90131-0960                 |

DIM  
C (±0.20)  
±.008  
(6.75)  
.266

DIM  
D (+0.20  
0.30)  
±.008  
±.012  
(2.90)  
.114

STANDARD PRODUCTS

|   |   |  |              |                                   |                      |   |                        |  |  |  |  |
|---|---|--|--------------|-----------------------------------|----------------------|---|------------------------|--|--|--|--|
| <b>ADD DATUM</b><br>EC NO: S2017-0354<br>DRWN: FCS00 2016/12/13<br>CHKD: CGOH 2017/01/17<br>APPR: KHL IM 2017/01/18 | QUALITY SYMBOLS<br>$\nabla_A = 0$<br>$\nabla_B = 0$<br>$\nabla_C = 0$ | GENERAL TOLERANCES (UNLESS SPECIFIED)                |              | DIMENSION STYLE<br><b>MM ONLY</b> |                      | SCALE<br>NTS  | DESIGN UNITS<br>METRIC | THIRD ANGLE PROJECTION                                     |  |  |  |
|   |   |  |              | mm                                | INCH                 | DRAWN BY<br>DB  | DATE<br>1987/07/16     | TITLE<br>C GRID III DUAL ROW STRAIGHT PIN HEADER           |  |  |  |
|   |   |  |              | 4 PLACES ± --- ± ---              | 3 PLACES ± --- ± --- | CHECKED BY<br>DB  | DATE<br>1987/07/16     | <b>molex</b><br>DOCUMENT NO. SD-90131-001 SHEET NO. 3 OF 8 |  |  |  |
|   |   |  |              | 2 PLACES ± 0.20 ± ---             | 1 PLACE ± --- ± ---  | APPROVED BY<br>MLONG  | DATE<br>2012/02/24     |  |  |  |  |
|   |   | 0 PLACE ± --- ± ---                                  | ANGULAR ± 3° |                                   | MATERIAL NO.         |   | DOCUMENT NO.           |  |  |  |  |
|   |   | DRAFT WHERE APPLICABLE MUST REMAIN WITHIN DIMENSIONS |              | SEE TABLE                         |                      | THIS DRAWING CONTAINS INFORMATION THAT IS PROPRIETARY TO MOLEX INCORPORATED AND SHOULD NOT BE USED WITHOUT WRITTEN PERMISSION |                        |  |  |  |  |

9 8 7 6 5 4 3 2 1

| CIRCUIT SIZE | PLATING TYPE A PART NO. | PLATING TYPE E PART NO. | PLATING TYPE F PART NO. |
|--------------|-------------------------|-------------------------|-------------------------|
| 2 X 1        | 90131-0041              | 90131-0681              | 90131-0841              |
| 2 X 2        | ▲ -0042                 | ▲ -0682                 | ▲ -0842                 |
| 2 X 3        | -0043                   | -0683                   | -0843                   |
| 2 X 4        | -0044                   | -0684                   | -0844                   |
| 2 X 5        | -0045                   | -0685                   | -0845                   |
| 2 X 6        | -0046                   | -0686                   | -0846                   |
| 2 X 7        | -0047                   | -0687                   | -0847                   |
| 2 X 8        | -0048                   | -0688                   | -0848                   |
| 2 X 9        | -0049                   | -0689                   | -0849                   |
| 2 X 10       | -0050                   | -0690                   | -0850                   |
| 2 X 11       | -0051                   | -0691                   | -0851                   |
| 2 X 12       | -0052                   | -0692                   | -0852                   |
| 2 X 13       | -0053                   | -0693                   | -0853                   |
| 2 X 14       | -0054                   | -0694                   | -0854                   |
| 2 X 15       | -0055                   | -0695                   | -0855                   |
| 2 X 16       | -0056                   | -0696                   | -0856                   |
| 2 X 17       | -0057                   | -0697                   | -0857                   |
| 2 X 18       | -0058                   | -0698                   | -0858                   |
| 2 X 19       | -0059                   | -0699                   | -0859                   |
| 2 X 20       | -0060                   | -0700                   | -0860                   |
| 2 X 21       | -0061                   | -0701                   | -0861                   |
| 2 X 22       | -0062                   | -0702                   | -0862                   |
| 2 X 23       | -0063                   | -0703                   | -0863                   |
| 2 X 24       | -0064                   | -0704                   | -0864                   |
| 2 X 25       | -0065                   | -0705                   | -0865                   |
| 2 X 26       | -0066                   | -0706                   | -0866                   |
| 2 X 27       | -0067                   | -0707                   | -0867                   |
| 2 X 28       | -0068                   | -0708                   | -0868                   |
| 2 X 29       | -0069                   | -0709                   | -0869                   |
| 2 X 30       | -0070                   | -0710                   | -0870                   |
| 2 X 31       | -0071                   | -0711                   | -0871                   |
| 2 X 32       | -0072                   | -0712                   | -0872                   |
| 2 X 33       | -0073                   | -0713                   | -0873                   |
| 2 X 34       | -0074                   | -0714                   | -0874                   |
| 2 X 35       | -0075                   | -0715                   | -0875                   |
| 2 X 36       | -0076                   | -0716                   | -0876                   |
| 2 X 37       | -0077                   | -0717                   | -0877                   |
| 2 X 38       | -0078                   | -0718                   | -0878                   |
| 2 X 39       | ▼ -0079                 | ▼ -0719                 | ▼ -0879                 |
| 2 X 40       | 90131-0080              | 90131-0720              | 90131-0880              |

DIM C (+0.20) ±.008 (5.75) .226

DIM D (+0.20) ±.008 ±.012 (2.90) .114

| CIRCUIT SIZE | PLATING TYPE A PART NO. | PLATING TYPE E PART NO. | PLATING TYPE F PART NO. |
|--------------|-------------------------|-------------------------|-------------------------|
| 2 X 1        | 90131-0081              | 90131-0721              | 90131-0881              |
| 2 X 2        | ▲ -0082                 | ▲ -0722                 | ▲ -0882                 |
| 2 X 3        | -0083                   | -0723                   | -0883                   |
| 2 X 4        | -0084                   | -0724                   | -0884                   |
| 2 X 5        | -0085                   | -0725                   | -0885                   |
| 2 X 6        | -0086                   | -0726                   | -0886                   |
| 2 X 7        | -0087                   | -0727                   | -0887                   |
| 2 X 8        | -0088                   | -0728                   | -0888                   |
| 2 X 9        | -0089                   | -0729                   | -0889                   |
| 2 X 10       | -0090                   | -0730                   | -0890                   |
| 2 X 11       | -0091                   | -0731                   | -0891                   |
| 2 X 12       | -0092                   | -0732                   | -0892                   |
| 2 X 13       | -0093                   | -0733                   | -0893                   |
| 2 X 14       | -0094                   | -0734                   | -0894                   |
| 2 X 15       | -0095                   | -0735                   | -0895                   |
| 2 X 16       | -0096                   | -0736                   | -0896                   |
| 2 X 17       | -0097                   | -0737                   | -0897                   |
| 2 X 18       | -0098                   | -0738                   | -0898                   |
| 2 X 19       | -0099                   | -0739                   | -0899                   |
| 2 X 20       | -0100                   | -0740                   | -0900                   |
| 2 X 21       | -0101                   | -0741                   | -0901                   |
| 2 X 22       | -0102                   | -0742                   | -0902                   |
| 2 X 23       | -0103                   | -0743                   | -0903                   |
| 2 X 24       | -0104                   | -0744                   | -0904                   |
| 2 X 25       | -0105                   | -0745                   | -0905                   |
| 2 X 26       | -0106                   | -0746                   | -0906                   |
| 2 X 27       | -0107                   | -0747                   | -0907                   |
| 2 X 28       | -0108                   | -0748                   | -0908                   |
| 2 X 29       | -0109                   | -0749                   | -0909                   |
| 2 X 30       | -0110                   | -0750                   | -0910                   |
| 2 X 31       | -0111                   | -0751                   | -0911                   |
| 2 X 32       | -0112                   | -0752                   | -0912                   |
| 2 X 33       | -0113                   | -0753                   | -0913                   |
| 2 X 34       | -0114                   | -0754                   | -0914                   |
| 2 X 35       | -0115                   | -0755                   | -0915                   |
| 2 X 36       | -0116                   | -0756                   | -0916                   |
| 2 X 37       | -0117                   | -0757                   | -0917                   |
| 2 X 38       | -0118                   | -0758                   | -0918                   |
| 2 X 39       | ▼ -0119                 | ▼ -0759                 | ▼ -0919                 |
| 2 X 40       | 90131-0120              | 90131-0760              | 90131-0920              |

DIM C (+0.20) ±.008 (5.75) .226

DIM D (+0.25) ±.010 (4.50) .177

NON-STANDARD PRODUCTS

ADD DATUM  
EC NO: S2017-0354  
2016/12/13  
DRWN:FC500  
CHKD:GGH  
2017/01/17  
APPR:KHLIM  
2017/01/18

QUALITY SYMBOLS  
FA=0  
FG=0  
FB=0

GENERAL TOLERANCES (UNLESS SPECIFIED)

|          | mm     | INCH  |
|----------|--------|-------|
| 4 PLACES | ± ---  | ± --- |
| 3 PLACES | ± ---  | ± --- |
| 2 PLACES | ± 0.20 | ± --- |
| 1 PLACE  | ± ---  | ± --- |
| 0 PLACE  | ± ---  | ± --- |

ANGULAR ± 3 °  
DRAFT WHERE APPLICABLE  
MUST REMAIN WITHIN DIMENSIONS

DIMENSION STYLE  
MM ONLY

| DRAWN BY    | DATE       |
|-------------|------------|
| DB          | 1987/07/16 |
| CHECKED BY  | DATE       |
| DB          | 1987/07/16 |
| APPROVED BY | DATE       |
| MLONG       | 2012/02/24 |

MATERIAL NO.  
SEE TABLE

SCALE  
NTS

DESIGN UNITS  
METRIC

THIRD ANGLE PROJECTION

TITLE  
C GRID III DUAL ROW  
STRAIGHT PIN HEADER

**molex**

DOCUMENT NO.  
SD-90131-001

SHEET NO.  
4 OF 8

THIS DRAWING CONTAINS INFORMATION THAT IS PROPRIETARY TO MOLEX INCORPORATED AND SHOULD NOT BE USED WITHOUT WRITTEN PERMISSION

| CIRCUIT SIZE | PLATING TYPE A PART NO. | PLATING TYPE E PART NO. | PLATING TYPE F PART NO. |
|--------------|-------------------------|-------------------------|-------------------------|
| 2 X 1        | 90131-0161              | 90131-0801              | 90131-0961              |
| 2 X 2        | ▲ -0162                 | -0802                   | ▲ -0962                 |
| 2 X 3        | -0163                   | -0803                   | -0963                   |
| 2 X 4        | -0164                   | -0804                   | -0964                   |
| 2 X 5        | -0165                   | -0805                   | -0965                   |
| 2 X 6        | -0166                   | -0806                   | -0966                   |
| 2 X 7        | -0167                   | -0807                   | -0967                   |
| 2 X 8        | -0168                   | -0808                   | -0968                   |
| 2 X 9        | -0169                   | -0809                   | -0969                   |
| 2 X 10       | -0170                   | -0810                   | -0970                   |
| 2 X 11       | -0171                   | -0811                   | -0971                   |
| 2 X 12       | -0172                   | -0812                   | -0972                   |
| 2 X 13       | -0173                   | -0813                   | -0973                   |
| 2 X 14       | -0174                   | -0814                   | -0974                   |
| 2 X 15       | -0175                   | -0815                   | -0975                   |
| 2 X 16       | -0176                   | -0816                   | -0976                   |
| 2 X 17       | -0177                   | -0817                   | -0977                   |
| 2 X 18       | -0178                   | -0818                   | -0978                   |
| 2 X 19       | -0179                   | -0819                   | -0979                   |
| 2 X 20       | -0180                   | -0820                   | -0980                   |
| 2 X 21       | -0181                   | -0821                   | -0981                   |
| 2 X 22       | -0182                   | -0822                   | -0982                   |
| 2 X 23       | -0183                   | -0823                   | -0983                   |
| 2 X 24       | -0184                   | -0824                   | -0984                   |
| 2 X 25       | -0185                   | -0825                   | -0985                   |
| 2 X 26       | -0186                   | -0826                   | -0986                   |
| 2 X 27       | -0187                   | -0827                   | -0987                   |
| 2 X 28       | -0188                   | -0828                   | -0988                   |
| 2 X 29       | -0189                   | -0829                   | -0989                   |
| 2 X 30       | -0190                   | -0830                   | -0990                   |
| 2 X 31       | -0191                   | -0831                   | -0991                   |
| 2 X 32       | -0192                   | -0832                   | -0992                   |
| 2 X 33       | -0193                   | -0833                   | -0993                   |
| 2 X 34       | -0194                   | -0834                   | -0994                   |
| 2 X 35       | -0195                   | -0835                   | -0995                   |
| 2 X 36       | -0196                   | -0836                   | -0996                   |
| 2 X 37       | -0197                   | -0837                   | -0997                   |
| 2 X 38       | -0198                   | -0838                   | -0998                   |
| 2 X 39       | ▼ -0199                 | -0839                   | ▼ -0999                 |
| 2 X 40       | 90131-0200              | 90131-0840              | 90131-1000              |

DIM C (±0.20) ±.008 (6.75) .266

DIM D (±0.25) ±.010 (4.50) .177

NON-STANDARD PRODUCTS

|  |                               |   |                                  |   |                              |                        |
|--|-------------------------------|---|----------------------------------|---|------------------------------|------------------------|
| <b>ADD DATUM</b><br>EC NO: S2017-0354<br>DRWN:FCS00 2016/12/13<br>CHKD:CG0H 2017/01/17<br>APPR:KHL JM 2017/01/18 | QUALITY SYMBOLS               | GENERAL TOLERANCES (UNLESS SPECIFIED)   | DIMENSION STYLE                  | SCALE   | DESIGN UNITS                 | THIRD ANGLE PROJECTION |
|  | $F_A=0$<br>$F_G=0$<br>$F_P=0$ | mm INCH   | MM ONLY                          | NTS   | METRIC                       |                        |
|  |                               | 4 PLACES ± --- ± ---<br>3 PLACES ± --- ± ---<br>2 PLACES ± 0.20 ± ---<br>1 PLACE ± --- ± ---<br>0 PLACE ± --- ± --- | DRAWN BY DATE<br>DB 1987/07/16   | TITLE<br>C GRID III DUAL ROW STRAIGHT PIN HEADER  |                              |                        |
|  |                               | ANGULAR ± 3 °<br>DRAFT WHERE APPLICABLE MUST REMAIN WITHIN DIMENSIONS   | CHECKED BY DATE<br>DB 1987/07/16 | APPROVED BY DATE<br>MLONG 2012/02/24  |                              |                        |
|  |                               | SEE TABLE   | MATERIAL NO.                     | DOCUMENT NO.  | <b>molex</b><br>SD-90131-001 |                        |
|  |                               |   | SIZE<br>A3                       | THIS DRAWING CONTAINS INFORMATION THAT IS PROPRIETARY TO MOLEX INCORPORATED AND SHOULD NOT BE USED WITHOUT WRITTEN PERMISSION |                              |                        |
|  |                               |   |                                  |   | SHEET NO.                    | 5 OF 8                 |

|   | 10 | 9            | 8                       | 7                       | 6                       | 5                       | 4            | 3                       | 2                       | 1                       |                         |   |
|---|----|--------------|-------------------------|-------------------------|-------------------------|-------------------------|--------------|-------------------------|-------------------------|-------------------------|-------------------------|---|
|   |    | CIRCUIT SIZE | PLATING TYPE B PART NO. | PLATING TYPE C PART NO. | PLATING TYPE D PART NO. | PLATING TYPE G PART NO. | CIRCUIT SIZE | PLATING TYPE B PART NO. | PLATING TYPE C PART NO. | PLATING TYPE D PART NO. | PLATING TYPE G PART NO. |   |
| F |    | 2 X 1        | 90131-0281              | 90131-0441              | 90131-0601              | 90131-1081              | 2 X 1        | 90131-0201              | 90131-0361              | 90131-0521              | 90131-1001              | F |
|   |    | 2 X 2        | ↑ -0282                 | ↑ -0442                 | ↑ -0602                 | ↑ -1082                 | 2 X 2        | ↑ -0202                 | ↑ -0362                 | ↑ -0522                 | ↑ -1002                 |   |
|   |    | 2 X 3        | -0283                   | -0443                   | -0603                   | -1083                   | 2 X 3        | -0203                   | -0363                   | -0523                   | -1003                   |   |
|   |    | 2 X 4        | -0284                   | -0444                   | -0604                   | -1084                   | 2 X 4        | -0204                   | -0364                   | -0524                   | -1004                   |   |
|   |    | 2 X 5        | -0285                   | -0445                   | -0605                   | -1085                   | 2 X 5        | -0205                   | -0365                   | -0525                   | -1005                   |   |
|   |    | 2 X 6        | -0286                   | -0446                   | -0606                   | -1086                   | 2 X 6        | -0206                   | -0366                   | -0526                   | -1006                   |   |
|   |    | 2 X 7        | -0287                   | -0447                   | -0607                   | -1087                   | 2 X 7        | -0207                   | -0367                   | -0527                   | -1007                   |   |
|   |    | 2 X 8        | -0288                   | -0448                   | -0608                   | -1088                   | 2 X 8        | -0208                   | -0368                   | -0528                   | -1008                   |   |
|   |    | 2 X 9        | -0289                   | -0449                   | -0609                   | -1089                   | 2 X 9        | -0209                   | -0369                   | -0529                   | -1009                   |   |
| E |    | 2 X 10       | -0290                   | -0450                   | -0610                   | -1090                   | 2 X 10       | -0210                   | -0370                   | -0530                   | -1010                   | E |
|   |    | 2 X 11       | -0291                   | -0451                   | -0611                   | -1091                   | 2 X 11       | -0211                   | -0371                   | -0531                   | -1011                   |   |
|   |    | 2 X 12       | -0292                   | -0452                   | -0612                   | -1092                   | 2 X 12       | -0212                   | -0372                   | -0532                   | -1012                   |   |
|   |    | 2 X 13       | -0293                   | -0453                   | -0613                   | -1093                   | 2 X 13       | -0213                   | -0373                   | -0533                   | -1013                   |   |
|   |    | 2 X 14       | -0294                   | -0454                   | -0614                   | -1094                   | 2 X 14       | -0214                   | -0374                   | -0534                   | -1014                   |   |
|   |    | 2 X 15       | -0295                   | -0455                   | -0615                   | -1095                   | 2 X 15       | -0215                   | -0375                   | -0535                   | -1015                   |   |
|   |    | 2 X 16       | -0296                   | -0456                   | -0616                   | -1096                   | 2 X 16       | -0216                   | -0376                   | -0536                   | -1016                   |   |
|   |    | 2 X 17       | -0297                   | -0457                   | -0617                   | -1097                   | 2 X 17       | -0217                   | -0377                   | -0537                   | -1017                   |   |
|   |    | 2 X 18       | -0298                   | -0458                   | -0618                   | -1098                   | 2 X 18       | -0218                   | -0378                   | -0538                   | -1018                   |   |
|   |    | 2 X 19       | -0299                   | -0459                   | -0619                   | -1099                   | 2 X 19       | -0219                   | -0379                   | -0539                   | -1019                   |   |
| D |    | 2 X 20       | -0300                   | -0460                   | -0620                   | -1100                   | 2 X 20       | -0220                   | -0380                   | -0540                   | -1020                   | D |
|   |    | 2 X 21       | -0301                   | -0461                   | -0621                   | -1101                   | 2 X 21       | -0221                   | -0381                   | -0541                   | -1021                   |   |
|   |    | 2 X 22       | -0302                   | -0462                   | -0622                   | -1102                   | 2 X 22       | -0222                   | -0382                   | -0542                   | -1022                   |   |
|   |    | 2 X 23       | -0303                   | -0463                   | -0623                   | -1103                   | 2 X 23       | -0223                   | -0383                   | -0543                   | -1023                   |   |
|   |    | 2 X 24       | -0304                   | -0464                   | -0624                   | -1104                   | 2 X 24       | -0224                   | -0384                   | -0544                   | -1024                   |   |
|   |    | 2 X 25       | -0305                   | -0465                   | -0625                   | -1105                   | 2 X 25       | -0225                   | -0385                   | -0545                   | -1025                   |   |
|   |    | 2 X 26       | -0306                   | -0466                   | -0626                   | -1106                   | 2 X 26       | -0226                   | -0386                   | -0546                   | -1026                   |   |
|   |    | 2 X 27       | -0307                   | -0467                   | -0627                   | -1107                   | 2 X 27       | -0227                   | -0387                   | -0547                   | -1027                   |   |
|   |    | 2 X 28       | -0308                   | -0468                   | -0628                   | -1108                   | 2 X 28       | -0228                   | -0388                   | -0548                   | -1028                   |   |
|   |    | 2 X 29       | -0309                   | -0469                   | -0629                   | -1109                   | 2 X 29       | -0229                   | -0389                   | -0549                   | -1029                   |   |
| C |    | 2 X 30       | -0310                   | -0470                   | -0630                   | -1110                   | 2 X 30       | -0230                   | -0390                   | -0550                   | -1030                   | C |
|   |    | 2 X 31       | -0311                   | -0471                   | -0631                   | -1111                   | 2 X 31       | -0231                   | -0391                   | -0551                   | -1031                   |   |
|   |    | 2 X 32       | -0312                   | -0472                   | -0632                   | -1112                   | 2 X 32       | -0232                   | -0392                   | -0552                   | -1032                   |   |
|   |    | 2 X 33       | -0313                   | -0473                   | -0633                   | -1113                   | 2 X 33       | -0233                   | -0393                   | -0553                   | -1033                   |   |
|   |    | 2 X 34       | -0314                   | -0474                   | -0634                   | -1114                   | 2 X 34       | -0234                   | -0394                   | -0554                   | -1034                   |   |
|   |    | 2 X 35       | -0315                   | -0475                   | -0635                   | -1115                   | 2 X 35       | -0235                   | -0395                   | -0555                   | -1035                   |   |
|   |    | 2 X 36       | -0316                   | -0476                   | -0636                   | -1116                   | 2 X 36       | -0236                   | -0396                   | -0556                   | -1036                   |   |
|   |    | 2 X 37       | -0317                   | -0477                   | -0637                   | -1117                   | 2 X 37       | -0237                   | -0397                   | -0557                   | -1037                   |   |
|   |    | 2 X 38       | -0318                   | -0478                   | -0638                   | -1118                   | 2 X 38       | -0238                   | -0398                   | -0558                   | -1038                   |   |
| B |    | 2 X 39       | ↓ -0319                 | ↓ -0479                 | ↓ -0639                 | ↓ -1119                 | 2 X 39       | ↓ -0239                 | ↓ -0399                 | ↓ -0559                 | ↓ -1039                 | B |
|   |    | 2 X 40       | 90131-0320              | 90131-0480              | 90131-0640              | 90131-1120              | 2 X 40       | 90131-0240              | 90131-0400              | 90131-0560              | 90131-1040              |   |

DIM C (+0.20 / ±.008) (6.75) .266

DIM D (+0.20 / 0.30 / ±.008 / ±.012) (2.90) .114

DIM C (+0.20 / ±.008) (5.75) .226

DIM D (+0.20 / 0.30 / ±.008 / ±.012) (2.90) .114

**NON-STANDARD PRODUCTS  
NOT FOR GENERAL RELEASE**

|                    |             |                 |             |
|--------------------|-------------|-----------------|-------------|
| ADD DATUM          | 2016/12/13  | 2017/01/17      | 2017/01/18  |
| IEC NO: S2017-0354 | DRWN:FC500  | CHKD:G0H        | APPR:KHL JM |
| REV                | DESCRIPTION | QUALITY SYMBOLS |             |
|                    |             | ▽=0             |             |
|                    |             | ▽=0             |             |
|                    |             | ▽=0             |             |

|  |                 |              |   |                        |
|--|-----------------|--------------|---|------------------------|
| GENERAL TOLERANCES (UNLESS SPECIFIED)                | DIMENSION STYLE | SCALE        | DESIGN UNITS                            | THIRD ANGLE PROJECTION |
|  | MM ONLY         | NTS          | METRIC                                  |                        |
| 4 PLACES ± --- ± ---                                 | DRAWN BY        | DATE         | TITLE                                   |                        |
| 3 PLACES ± --- ± ---                                 | DB              | 1987/07/16   | C GRID III DUAL ROW STRAIGHT PIN HEADER |                        |
| 2 PLACES ± 0.20 ± ---                                | CHECKED BY      | DATE         |   |                        |
| 1 PLACE ± --- ± ---                                  | DB              | 1987/07/16   |   |                        |
| 0 PLACE ± --- ± ---                                  | APPROVED BY     | DATE         |   |                        |
|  | MLONG           | 2012/02/24   |   |                        |
| ANGULAR ± 3 °  | MATERIAL NO.    | DOCUMENT NO. |   |                        |
| DRAFT WHERE APPLICABLE MUST REMAIN WITHIN DIMENSIONS | SEE TABLE       | SD-90131-001 | SHEET NO. 6 OF 8                        |                        |

|      |   |  |  |
|------|---|--|--|
| SIZE | THIS DRAWING CONTAINS INFORMATION THAT IS PROPRIETARY TO MOLEX INCORPORATED AND SHOULD NOT BE USED WITHOUT WRITTEN PERMISSION |  |  |
| A3   |   |  |  |

| CIRCUIT SIZE | PLATING TYPE B PART NO. | PLATING TYPE C PART NO. | PLATING TYPE D PART NO. | PLATING TYPE G PART NO. |
|--------------|-------------------------|-------------------------|-------------------------|-------------------------|
| 2 X 1        | 90131-0241              | 90131-0401              | 90131-0561              | 90131-1041              |
| 2 X 2        | ▲ -0242                 | ▲ -0402                 | ▲ -0562                 | ▲ -1042                 |
| 2 X 3        | ▲ -0243                 | ▲ -0403                 | ▲ -0563                 | ▲ -1043                 |
| 2 X 4        | ▲ -0244                 | ▲ -0404                 | ▲ -0564                 | ▲ -1044                 |
| 2 X 5        | ▲ -0245                 | ▲ -0405                 | ▲ -0565                 | ▲ -1045                 |
| 2 X 6        | ▲ -0246                 | ▲ -0406                 | ▲ -0566                 | ▲ -1046                 |
| 2 X 7        | ▲ -0247                 | ▲ -0407                 | ▲ -0567                 | ▲ -1047                 |
| 2 X 8        | ▲ -0248                 | ▲ -0408                 | ▲ -0568                 | ▲ -1048                 |
| 2 X 9        | ▲ -0249                 | ▲ -0409                 | ▲ -0569                 | ▲ -1049                 |
| 2 X 10       | ▲ -0250                 | ▲ -0410                 | ▲ -0570                 | ▲ -1050                 |
| 2 X 11       | ▲ -0251                 | ▲ -0411                 | ▲ -0571                 | ▲ -1051                 |
| 2 X 12       | ▲ -0252                 | ▲ -0412                 | ▲ -0572                 | ▲ -1052                 |
| 2 X 13       | ▲ -0253                 | ▲ -0413                 | ▲ -0573                 | ▲ -1053                 |
| 2 X 14       | ▲ -0254                 | ▲ -0414                 | ▲ -0574                 | ▲ -1054                 |
| 2 X 15       | ▲ -0255                 | ▲ -0415                 | ▲ -0575                 | ▲ -1055                 |
| 2 X 16       | ▲ -0256                 | ▲ -0416                 | ▲ -0576                 | ▲ -1056                 |
| 2 X 17       | ▲ -0257                 | ▲ -0417                 | ▲ -0577                 | ▲ -1057                 |
| 2 X 18       | ▲ -0258                 | ▲ -0418                 | ▲ -0578                 | ▲ -1058                 |
| 2 X 19       | ▲ -0259                 | ▲ -0419                 | ▲ -0579                 | ▲ -1059                 |
| 2 X 20       | ▲ -0260                 | ▲ -0420                 | ▲ -0580                 | ▲ -1060                 |
| 2 X 21       | ▲ -0261                 | ▲ -0421                 | ▲ -0581                 | ▲ -1061                 |
| 2 X 22       | ▲ -0262                 | ▲ -0422                 | ▲ -0582                 | ▲ -1062                 |
| 2 X 23       | ▲ -0263                 | ▲ -0423                 | ▲ -0583                 | ▲ -1063                 |
| 2 X 24       | ▲ -0264                 | ▲ -0424                 | ▲ -0584                 | ▲ -1064                 |
| 2 X 25       | ▲ -0265                 | ▲ -0425                 | ▲ -0585                 | ▲ -1065                 |
| 2 X 26       | ▲ -0266                 | ▲ -0426                 | ▲ -0586                 | ▲ -1066                 |
| 2 X 27       | ▲ -0267                 | ▲ -0427                 | ▲ -0587                 | ▲ -1067                 |
| 2 X 28       | ▲ -0268                 | ▲ -0428                 | ▲ -0588                 | ▲ -1068                 |
| 2 X 29       | ▲ -0269                 | ▲ -0429                 | ▲ -0589                 | ▲ -1069                 |
| 2 X 30       | ▲ -0270                 | ▲ -0430                 | ▲ -0590                 | ▲ -1070                 |
| 2 X 31       | ▲ -0271                 | ▲ -0431                 | ▲ -0591                 | ▲ -1071                 |
| 2 X 32       | ▲ -0272                 | ▲ -0432                 | ▲ -0592                 | ▲ -1072                 |
| 2 X 33       | ▲ -0273                 | ▲ -0433                 | ▲ -0593                 | ▲ -1073                 |
| 2 X 34       | ▲ -0274                 | ▲ -0434                 | ▲ -0594                 | ▲ -1074                 |
| 2 X 35       | ▲ -0275                 | ▲ -0435                 | ▲ -0595                 | ▲ -1075                 |
| 2 X 36       | ▲ -0276                 | ▲ -0436                 | ▲ -0596                 | ▲ -1076                 |
| 2 X 37       | ▲ -0277                 | ▲ -0437                 | ▲ -0597                 | ▲ -1077                 |
| 2 X 38       | ▲ -0278                 | ▲ -0438                 | ▲ -0598                 | ▲ -1078                 |
| 2 X 39       | ▲ -0279                 | ▲ -0439                 | ▲ -0599                 | ▲ -1079                 |
| 2 X 40       | 90131-0280              | 90131-0440              | 90131-0600              | 90131-1080              |

DIM C (±0.20) ±.008 (5.75) .226

DIM D (±0.25) ±.010 (4.50) .177

| CIRCUIT SIZE | PLATING TYPE B PART NO. | PLATING TYPE C PART NO. | PLATING TYPE D PART NO. | PLATING TYPE G PART NO. |
|--------------|-------------------------|-------------------------|-------------------------|-------------------------|
| 2 X 1        | 90131-0321              | 90131-0481              | 90131-0641              | 90131-1121              |
| 2 X 2        | ▲ -0322                 | ▲ -0482                 | ▲ -0642                 | ▲ -1122                 |
| 2 X 3        | ▲ -0323                 | ▲ -0483                 | ▲ -0643                 | ▲ -1123                 |
| 2 X 4        | ▲ -0324                 | ▲ -0484                 | ▲ -0644                 | ▲ -1124                 |
| 2 X 5        | ▲ -0325                 | ▲ -0485                 | ▲ -0645                 | ▲ -1125                 |
| 2 X 6        | ▲ -0326                 | ▲ -0486                 | ▲ -0646                 | ▲ -1126                 |
| 2 X 7        | ▲ -0327                 | ▲ -0487                 | ▲ -0647                 | ▲ -1127                 |
| 2 X 8        | ▲ -0328                 | ▲ -0488                 | ▲ -0648                 | ▲ -1128                 |
| 2 X 9        | ▲ -0329                 | ▲ -0489                 | ▲ -0649                 | ▲ -1129                 |
| 2 X 10       | ▲ -0330                 | ▲ -0490                 | ▲ -0650                 | ▲ -1130                 |
| 2 X 11       | ▲ -0331                 | ▲ -0491                 | ▲ -0651                 | ▲ -1131                 |
| 2 X 12       | ▲ -0332                 | ▲ -0492                 | ▲ -0652                 | ▲ -1132                 |
| 2 X 13       | ▲ -0333                 | ▲ -0493                 | ▲ -0653                 | ▲ -1133                 |
| 2 X 14       | ▲ -0334                 | ▲ -0494                 | ▲ -0654                 | ▲ -1134                 |
| 2 X 15       | ▲ -0335                 | ▲ -0495                 | ▲ -0655                 | ▲ -1135                 |
| 2 X 16       | ▲ -0336                 | ▲ -0496                 | ▲ -0656                 | ▲ -1136                 |
| 2 X 17       | ▲ -0337                 | ▲ -0497                 | ▲ -0657                 | ▲ -1137                 |
| 2 X 18       | ▲ -0338                 | ▲ -0498                 | ▲ -0658                 | ▲ -1138                 |
| 2 X 19       | ▲ -0339                 | ▲ -0499                 | ▲ -0659                 | ▲ -1139                 |
| 2 X 20       | ▲ -0340                 | ▲ -0500                 | ▲ -0660                 | ▲ -1140                 |
| 2 X 21       | ▲ -0341                 | ▲ -0501                 | ▲ -0661                 | ▲ -1141                 |
| 2 X 22       | ▲ -0342                 | ▲ -0502                 | ▲ -0662                 | ▲ -1142                 |
| 2 X 23       | ▲ -0343                 | ▲ -0503                 | ▲ -0663                 | ▲ -1143                 |
| 2 X 24       | ▲ -0344                 | ▲ -0504                 | ▲ -0664                 | ▲ -1144                 |
| 2 X 25       | ▲ -0345                 | ▲ -0505                 | ▲ -0665                 | ▲ -1145                 |
| 2 X 26       | ▲ -0346                 | ▲ -0506                 | ▲ -0666                 | ▲ -1146                 |
| 2 X 27       | ▲ -0347                 | ▲ -0507                 | ▲ -0667                 | ▲ -1147                 |
| 2 X 28       | ▲ -0348                 | ▲ -0508                 | ▲ -0668                 | ▲ -1148                 |
| 2 X 29       | ▲ -0349                 | ▲ -0509                 | ▲ -0669                 | ▲ -1149                 |
| 2 X 30       | ▲ -0350                 | ▲ -0510                 | ▲ -0670                 | ▲ -1150                 |
| 2 X 31       | ▲ -0351                 | ▲ -0511                 | ▲ -0671                 | ▲ -1151                 |
| 2 X 32       | ▲ -0352                 | ▲ -0512                 | ▲ -0672                 | ▲ -1152                 |
| 2 X 33       | ▲ -0353                 | ▲ -0513                 | ▲ -0673                 | ▲ -1153                 |
| 2 X 34       | ▲ -0354                 | ▲ -0514                 | ▲ -0674                 | ▲ -1154                 |
| 2 X 35       | ▲ -0355                 | ▲ -0515                 | ▲ -0675                 | ▲ -1155                 |
| 2 X 36       | ▲ -0356                 | ▲ -0516                 | ▲ -0676                 | ▲ -1156                 |
| 2 X 37       | ▲ -0357                 | ▲ -0517                 | ▲ -0677                 | ▲ -1157                 |
| 2 X 38       | ▲ -0358                 | ▲ -0518                 | ▲ -0678                 | ▲ -1158                 |
| 2 X 39       | ▲ -0359                 | ▲ -0519                 | ▲ -0679                 | ▲ -1159                 |
| 2 X 40       | 90131-0360              | 90131-0520              | 90131-0680              | 90131-1160              |

DIM C (±0.20) ±.008 (6.75) .266

DIM D (±0.25) ±.010 (4.50) .177

**NON-STANDARD PRODUCTS  
NOT FOR GENERAL RELEASE**

|  |  |                    |
|--|--|--------------------|
| ADD DATUM<br>EC NO: S2017-0354<br>DRWN:FC00<br>CHKD:CG0H<br>APPR:KHLIM | 2016/12/13<br>2017/01/17<br>2017/01/18 | DESCRIPTION<br>REV |
|--|--|--------------------|

| QUALITY SYMBOLS |     |
|-----------------|-----|
| ▽=0             | ▽=0 |
| ▽=0             | ▽=0 |
| ▽=0             | ▽=0 |

| GENERAL TOLERANCES (UNLESS SPECIFIED)                |              |
|--|--------------|
| 4 PLACES   | ± --- ± ---  |
| 3 PLACES   | ± --- ± ---  |
| 2 PLACES   | ± 0.20 ± --- |
| 1 PLACE  | ± --- ± ---  |
| 0 PLACE  | ± --- ± ---  |
| ANGULAR ± 3°   |              |
| DRAFT WHERE APPLICABLE MUST REMAIN WITHIN DIMENSIONS |              |

| DIMENSION STYLE   |            | SCALE                                   | DESIGN UNITS | THIRD ANGLE PROJECTION |
|---|------------|---|--------------|------------------------|
| MM ONLY   |            | NTS                                     | METRIC       |                        |
| DRAWN BY  | DATE       | TITLE                                   |              |                        |
| DB  | 1987/07/16 | C GRID III DUAL ROW STRAIGHT PIN HEADER |              |                        |
| CHECKED BY  | DATE       | <b>molex</b>                            |              |                        |
| DB  | 1987/07/16 |   |              |                        |
| APPROVED BY   | DATE       | MATERIAL NO.                            | DOCUMENT NO. | SHEET NO.              |
| MLONG   | 2012/02/24 | SEE TABLE                               | SD-90131-001 | 7 OF 8                 |
| THIS DRAWING CONTAINS INFORMATION THAT IS PROPRIETARY TO MOLEX INCORPORATED AND SHOULD NOT BE USED WITHOUT WRITTEN PERMISSION |            |   |              |                        |

| CIRCUIT SIZE | PLATING TYPE A PART NO. | PIN PART NUMBER | WAFER PART NUMBER | DIM C <sup>(±0.20)</sup> ±.008 | DIM D <sup>(±0.30)</sup> ±.008<br>-.012 |
|--------------|-------------------------|-----------------|-------------------|--------------------------------|---|
| 2 X 6        | 90131-3126              | 90129-2008      | 90131-0040        | (14.60)<br>.575                | (2.38)<br>.094                          |
| 2 X 36       | 90131-3128              | 90129-2008      | 90131-0040        | (14.60)<br>.575                | (2.38)<br>.094                          |
| 2 X 40       | 90131-3127              | 90129-2008      | 90131-0040        | (14.60)<br>.575                | (2.38)<br>.094                          |

**STANDARD PRODUCTS**

|   |  |                    |                 |  |   |                                   |            |  |                        |                        |  |  |
|---|--|--------------------|-----------------|--|---|-----------------------------------|------------|--|------------------------|------------------------|--|--|
| ADD DATUM<br>EC NO: S2017-0354<br>DRWN:FC500<br>CHKD:CG0H<br>APPR:KHLIM | 2016/12/13<br>2017/01/17<br>2017/01/18 | DESCRIPTION<br>REV | QUALITY SYMBOLS | GENERAL TOLERANCES (UNLESS SPECIFIED)                |   | DIMENSION STYLE<br><b>MM ONLY</b> |            | SCALE<br>NTS   | DESIGN UNITS<br>METRIC | THIRD ANGLE PROJECTION |  |  |
|   |  |                    | ▽=0             | mm   | INCH  | DRAWN BY                          | DATE       | TITLE<br><b>C GRID III DUAL ROW STRAIGHT PIN HEADER</b>    |                        |                        |  |  |
|   |  |                    | ▽=0             | 4 PLACES ±---  | ±---  | DB                                | 1987/07/16 |  |                        |                        |  |  |
|   |  |                    | ▽=0             | 3 PLACES ±---  | ±---  | CHECKED BY                        | DATE       | <b>molex</b><br>DOCUMENT NO. SD-90131-001 SHEET NO. 8 OF 8 |                        |                        |  |  |
| ▽=0   | 2 PLACES ±0.20                         | ±---               | DB              | 1987/07/16   |   |                                   |            |  |                        |                        |  |  |
|   | 1 PLACE ±---                           | ±---               | APPROVED BY     | DATE   | THIS DRAWING CONTAINS INFORMATION THAT IS PROPRIETARY TO MOLEX INCORPORATED AND SHOULD NOT BE USED WITHOUT WRITTEN PERMISSION |                                   |            |  |                        |                        |  |  |
|   | 0 PLACE ±---                           | ±---               | MLONG           | 2012/02/24   |   |                                   |            |  |                        |                        |  |  |
|   |  |                    | ANGULAR ± 3 °   | DRAFT WHERE APPLICABLE MUST REMAIN WITHIN DIMENSIONS |   | MATERIAL NO.<br><b>SEE TABLE</b>  |            |  |                        |                        |  |  |
|   |  |                    |                 |  |   | SIZE<br><b>A3</b>                 |            |  |                        |                        |  |  |