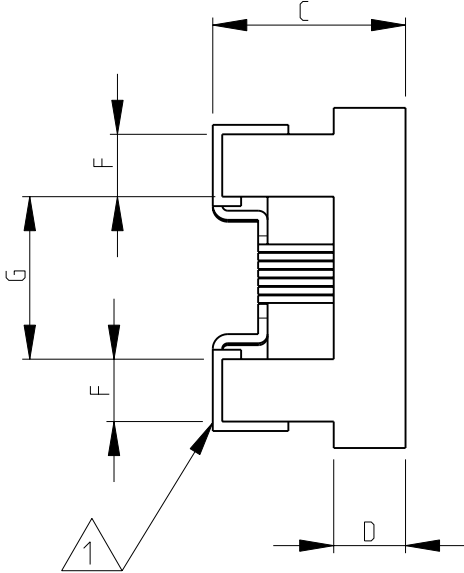
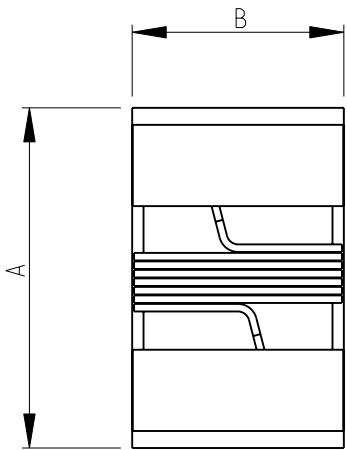


LOC	DIST	REVISIONS					
		P	LTR	DESCRIPTION		DATE	APVD
E	B		BA1	REVISED PER ECO-11-005150		29MAR2011	HMR

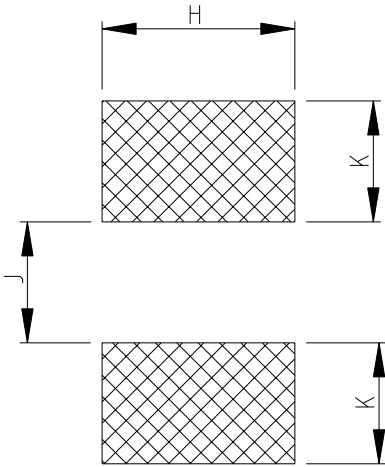
SERIES 36501J, 36501E AS SHOWN




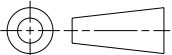
- 1
- 2
- 3
- TERMINAL WRAPAROUND: 0.007"(0.18mm) APPROX. ON BOTH ENDS
- AVAILABLE IN 2 DIFFERENT SERIES
- FOR FURTHER INFORMATION SEE DATA SHEET FOR 3650 SERIES-LOW INDUCTANCE,HIGH FREQUENCY CHIP INDUCTOR

RoHS Compliant

RECOMMENDED LAND PATTERN FOR 36501J, 36501E SERIES



36501E SERIES					36501J SERIES				
36501E	1.27	0.76	0.61	0.15	0.23	0.56	0.66	0.50	0.46
36501J	1.80	1.12	1.02	0.38	0.33	0.86	1.02	0.64	0.64
SERIES	A MAX.	B MAX.	C MAX.	D REF.	F	G	H	K	J

THIS DRAWING IS A CONTROLLED DOCUMENT.		DWN SUBHASH.M	14-NOV-08	 TE Connectivity			
		CHK PRAKASH.S	14-NOV-08				
DIMENSIONS: mm		APVD STEPHEN.P	14-NOV-08	NAME  LOW INDUCTANCE, HIGH FREQUENCY CHIP INDUCTOR SERIES 3650			
		PRODUCT SPEC -					
		APPLICATION SPEC -					
		-					
		WEIGHT -					
		CUSTOMER DRAWING					
MATERIAL -		FINISH -		SIZE A3	CAGE CODE 00779	DRAWING NO C- 1624112	RESTRICTED TO -
				SCALE 20:1	SHEET 1	OF 1	REV BA1

# Mouser Electronics

Authorized Distributor

Click to View Pricing, Inventory, Delivery & Lifecycle Information:

[TE Connectivity:](#)

[36501J5N1GTDG](#)