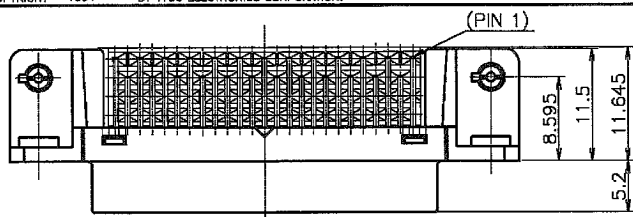
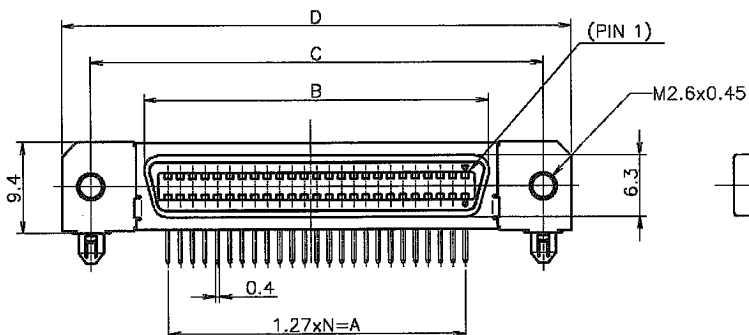


LOC	DIST	REV	DESCRIPTION	DATE	DWN	APVD
J	—	A	REVISED ECR-05-017946	14DEC05	L.Z	I.E

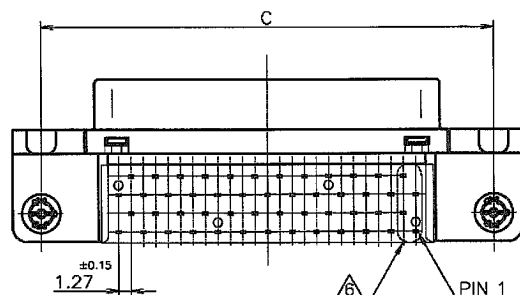
D



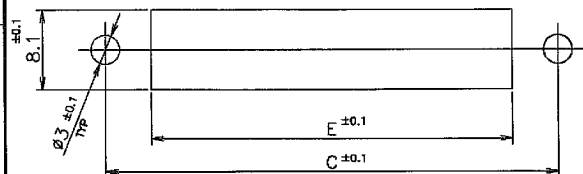
C



B

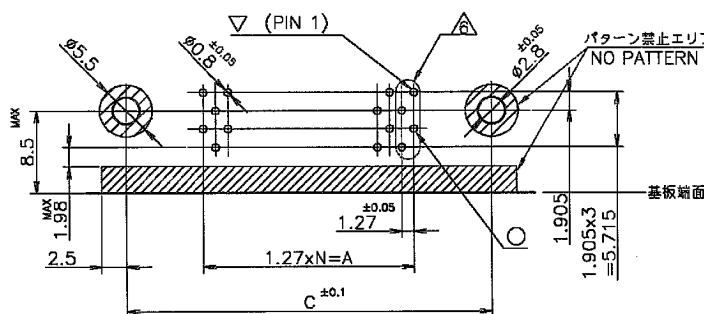
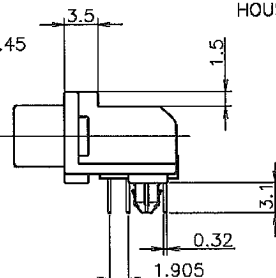


A



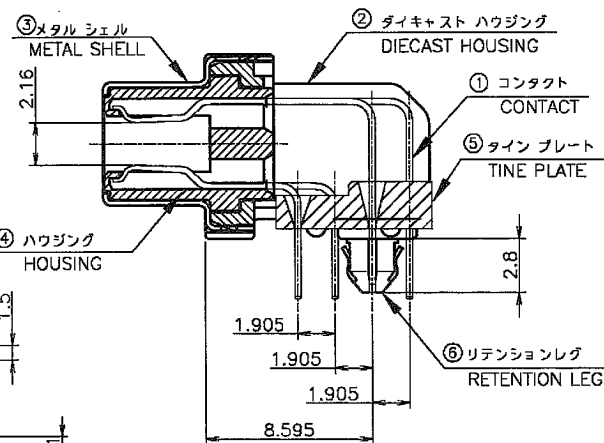
推奨パネルカット寸法
RECOMMENDED PANEL CUTOUT
(厚さ 2mm 最大)
THK;2mm MAX

3



推奨基板穴あけ寸法
RECOMMENDED PC BOARD MOUNTING DIMMENSION
コネクタ取付面
COMPONENT SIDE

2



- △ RECOMMENDED SCREW SIZE:
M2.6 LOCK SCREW (P/N:179715-1).
2. RECOMMENDED P.C. BOARD THICKNESS:
1.6mm (REF.)
3. CONNECTOR TO BE MATED: 175677
4. INSERTION FORCE OF RETENTION LEG
TO P.C.B.: 2.2kg MAX/CONNECTOR.
5. RETENTIVITY OF RETENTION LEG TO
P.C.B.: 0.5kg MIN/CONNECTOR.
△ POST/HOLE PATTERN AS SHOWN ON
THIS END FOR ALL POSITION.

項目 ITEM	材料及仕上げ MATERIAL & FINISH
①	COPPER ALLOY NICKEL UNDER PLATE ALL OVER. CONTACT AREA: Au PLATING SOLDER TINE AREA, TIN PLATE
②	ZINC NICKEL PLATING
③	STEEL 0.25 NICKEL PLATE OVER COPPER UNDERPLATE
④	THERMO-PLASTIC COLOR: BLACK (UL: 94V-0)
⑤	
⑥	COPPER ALLOY TIN PLATE OVER NICKEL UNDERPLATE

D

C

B

A

THIS DRAWING IS A CONTROLLED DOCUMENT.

DIMENSIONS: 単位: mm	TOLERANCES UNLESS OTHERWISE SPECIFIED: 一般公差
0 PLC ± 0.3	
1 PLC ± 0.3	
2 PLC ± 0.3	
3 PLC ± 0.3	
4 PLC ± 0.3	
ANGLES ± 3°	
MATERIAL 材料	FINISH 仕上
SEE NOTE	SEE NOTE

DMN LEO ZHOU 28SEP04	CHK STEVEN YAO 28SEP04	APVD I. ENOMOTO 28SEP04
PRODUCT SPEC 製品規格 188-60043		
APPLICATION SPEC 取付適用規格		
WEIGHT		
CUSTOMER DRAWING		

Tyco Electronics		Tyco Electronics AMP K.K. Kawasaki, Japan	
RECEPTACLE HDR ASSY (3.1mm) RETENTION LEG TYPE STANDARD CHAMP.050 SERIES (II)			
SIZE A3	CAGE CODE 00779	DRAWING NO 5179717	RESTRICTED TO —
SCALE 尺度 2:1		SHEET 1 OF 1	REV A

Mouser Electronics

Authorized Distributor

Click to View Pricing, Inventory, Delivery & Lifecycle Information:

[TE Connectivity:](#)

[1-5179717-9](#)