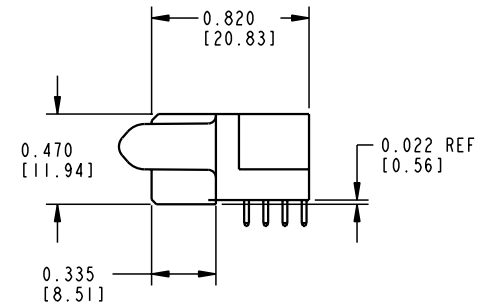
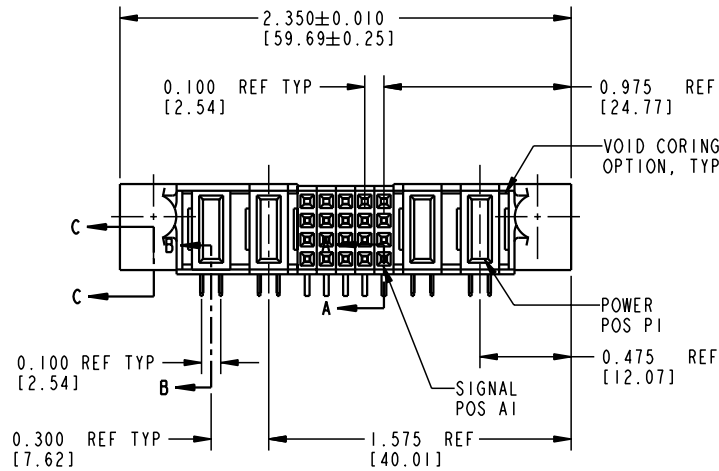
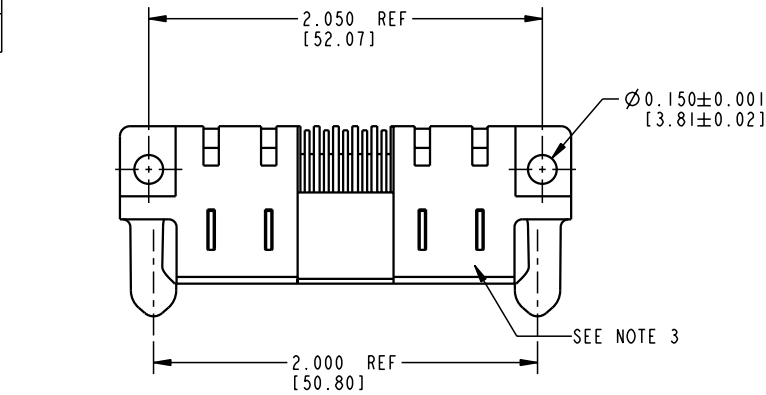


Tous droits strictement reserves. Reproduction ou communication a des tiers interdite sous quelque forme que ce soit sans autorisation écrite du propriétaire. Propriete de c FCI. Droits de reproduction FCI.



All rights strictly reserved. Reproduction or issue to third parties in any form whatever is not permitted without written authority from the proprietor. Property of FCI. Copyright FCI.

PRODUCT NUMBER  
51875-XXX  
SEE SHEET 2



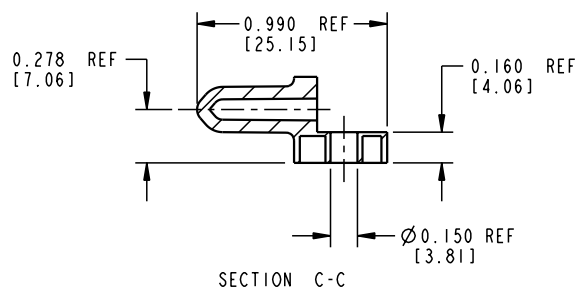
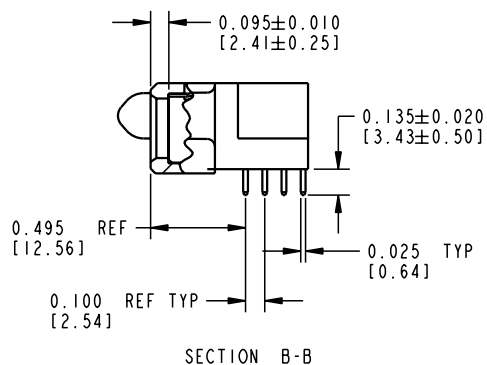
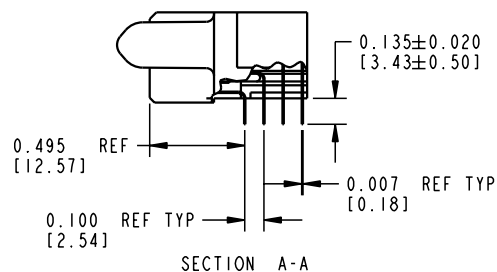
mat'l code				NOTE 1				tolerances unless otherwise specified				CUSTOMER COPY				FCI ELECTRONICS			
ltr	ecn no.	dr	date																
A	V10955	CGD	03-02-01	linear				.XX±.01/.X±.3				projection							
B	V11155	JRW	04-05-01					.XXX±.005/.XX±.13											
C	V11665	JWS	06-05-01	angles				.XXX±.0020/.XXX±.051											
								0°±2°											
				dr	C. BAROT	10-11-00													
				enr	J. DODDS	10-11-00													
				chr	J. DODDS	10-11-00													
				appd	J. DODDS	10-11-01													
sheet index	revision sheet	C	C	C															
		1	2	3															

form no. 7530-001-103

cage code 22526

PRODUCT NUMBER

51875-XXX

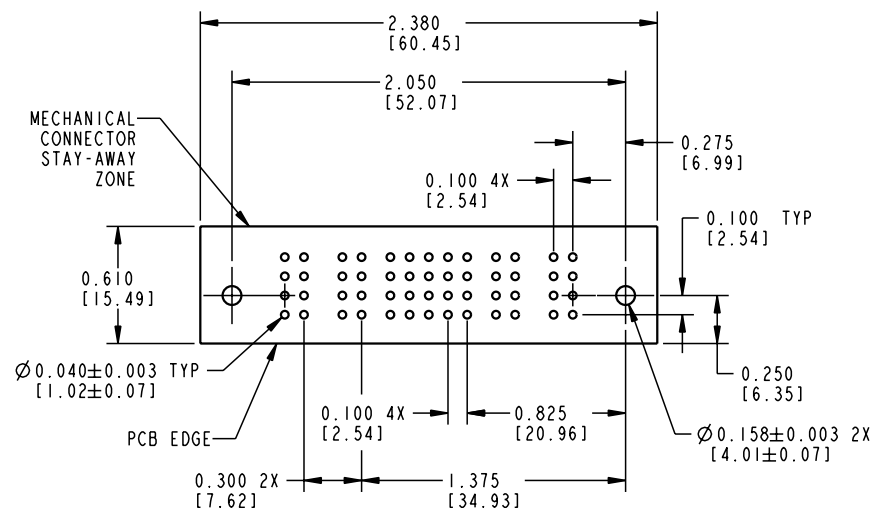


## CONNECTOR NOTES:


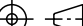
- ①. HOUSING MATERIAL: UL 94 V-0 GLASS FILLED HIGH TEMP THERMOPLASTIC  
POWER CONTACT MATERIAL: COPPER ALLOY  
SIGNAL CONTACT MATERIAL: COPPER ALLOY
2. PLATING:  
SIGNAL PINS: 30u"/0.76u Au OVER 50u"/1.27u Ni  
POWER CONTACTS: 50u"/1.27u Ni UNDER ALL:  
WITH 30u"/0.76u Au ON CONTACT AREA  
AND SnPb ON PCB INTERFACE
- ③. "MANUFACTURER'S" NAME, P/N, AND DATE CODE TO APPEAR ON THIS SURFACE
4. PRODUCT SPECIFICATION GS-12-149

## PCB NOTES:

5. ALL DIMENSIONS ARE BASIC UNLESS OTHERWISE SPECIFIED.  
6. ALL THROUGH HOLES ARE LOCATED WITH A TRUE POSITION OF 0.004 [0.10]  
7. ALL HOLE DIAMETERS ARE FINISHED HOLE SIZE  
8.  $\varnothing 0.158$  [4.01] THROUGH HOLES ARE UNPLATED.  
9.  $\varnothing 0.0453 \pm 0.0010$  [1.151  $\pm 0.025$ ] DRILLED HOLES PLATED WITH  
0.0003 [0.008] MIN SnPb OVER 0.001 [0.03] TO 0.003 [0.08] Cu  
PLATING TO ACHIEVE A  $\varnothing 0.040 \pm 0.003$  [1.02  $\pm 0.07$ ] HOLE.




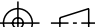

## RECOMMENDED PCB LAYOUT

mat'l code				NOTE 1				tolerances unless otherwise specified				CUSTOMER COPY				 <b>ELECTRONICS</b> www.fciconnect.com			
lfr		ecn no.		dr		date		linear	.XX±.01/.X±.3				projection 	title 2P + 20S + 2P RIGHT ANGLE SPECIAL RECEIPT					
C									.XXX±.005/.XX±.13										
									angles	.XXX±.0020/.XXX±.051									
								0°±2°											
								dr		C. BAROT	10-11-00	INCH / MM scale 1:1		product family		PwrBlade	code		
								enrg	J. DODDS	10-11-00	size			dwg no	51875	213			
								chr	J. DODDS	10-11-00	A			SHEET 2					
								appd	J. DODDS	10-11-01									
sheet index		revision sheet																	

All rights strictly reserved. Reproduction or issue to third parties in any form whatever is not permitted without written authority from the proprietor.  
Property of FCI. Copyright FCI.



PRODUCT No.	FOR INTERNAL USE ONLY
51875-002	

mat'l code				NOTE 1		tolerances unless otherwise specified		CUSTOMER		 <b>ELECTRONICS</b> www.fciconnect.com		
lfr	ecn no.	dr	date	linear	.XX±.01 / .X±.3		COPY		projection 	title 2P + 20S + 2P RIGHT ANGLE SPECIAL RECEPT		
C					.XXX±.005 / .X±.13							
					.XXX±.0020 / .XXX±.051							
				angles	0°±2°				INCH / MM  scale 1:1	product family PwrBlade code		
				dr	C. BAROT	10-11-00				size	dwg no 51875	213 sheet 3
				enrg	J. DODDS	10-11-00						
				chr	J. DODDS	10-11-00						
				appd	J. DODDS	10-11-01						
sheet index		revision sheet										

cage code	22526
-----------	-------

22526

# Mouser Electronics

Authorized Distributor

Click to View Pricing, Inventory, Delivery & Lifecycle Information:

[FCI / Amphenol:](#)

[51875-001LF](#) [51875-002LF](#)