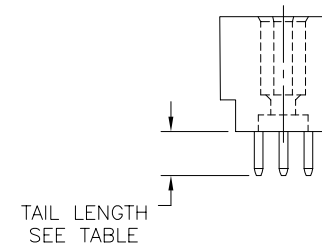
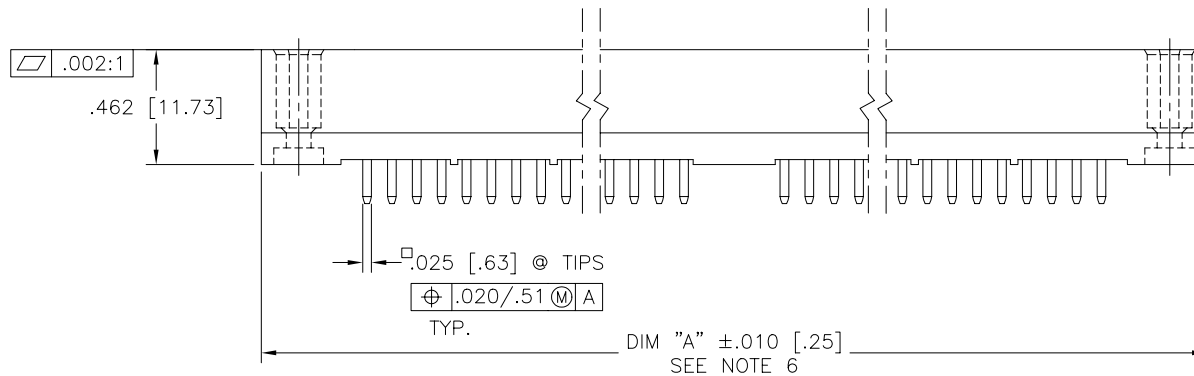
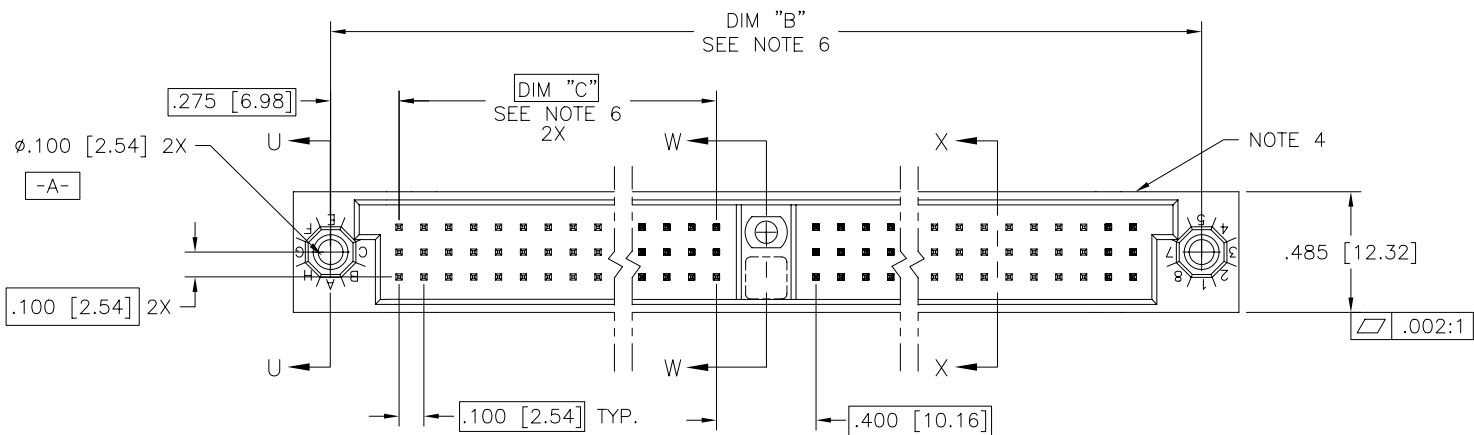




FCIconnect.com

Copyright FCI

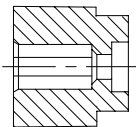
PRODUCT NUMBER
SEE TABLE



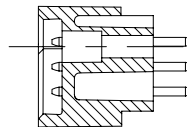
mat'l. code SEE NOTE 3				surface ISO 1302 ✓	tolerance ISO 406 ISO 1101	projection INCH/MM	product family HPC
ltr	ecr	no	dr	date	tolerances unless otherwise specified		title
G	v40286	PDP		1/20/94	angles	.XX ±.01/.3	3 ROW VERTICAL HEADER
H	v40940	PDP		6/01/94	linear	.XXX ±.005/.13	W/SOLDER TAIL PINS 1 G.P.
J	v90017	HTB		1/07/99	0°±2°	.XXXX ±.0020/.051	dwg no
K	v00272	JWS	2/01/00	dr	D. SHEAFFER	3/14/91	sheet 1 of 3 size
L	v05-0759	DAI	10/05/05	enr	S. CLARK	3/14/91	50013 A3
M	v05-1039	DAI	11/15/05	chr	S. CLARK	3/14/91	type
N	M06-0255	MNR	7/06/06	app	S. CLARK	3/14/91	Product Customer Drawing
sheet	revision	N	N	N			
index	sheet	1	2	3			

form: A3

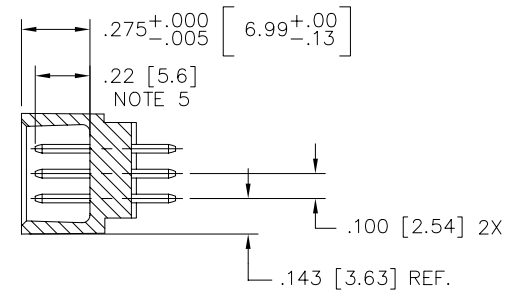
PRODUCT NUMBER
SEE TABLE



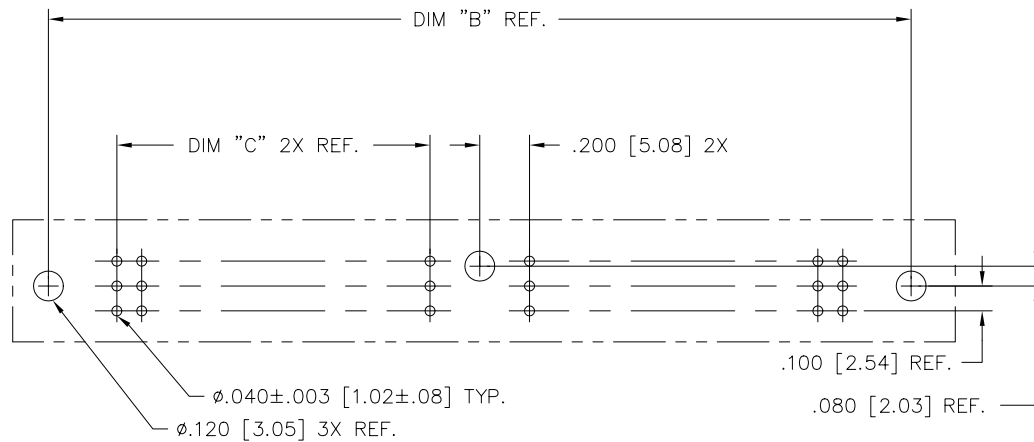
SECTION U-U



SECTION W-W



SECTION X-X



RECOMMENDED PCB LAYOUT
(ALL HOLES LOCATED ON .100/2.54 GRID
UNLESS OTHERWISE SPECIFIED)

mat'l. code SEE NOTE 3				surface ISO 1302 ✓	tolerance ISO 406 ISO 1101	projection INCH/MM	product family HPC
ltr	ec	no	dr	date	tolerances unless otherwise specified	scale 1:1 FCI	title 3 ROW VERTICAL HEADER W/SOLDER TAIL PINS 1 G.P.
N					angles linear .XX ±.01/.3		dwg no
					.XXX ±.005/.13		sheet 2 of 3 size
					.XXXX ±.0020/.051		A3
				dr	D. SHEAFFER 3/14/91		type Product Customer Drawing
				enr	S. CLARK 3/14/91		
				chr	S. CLARK 3/14/91		
				appd	S. CLARK 3/14/91		
sheet index	revision sheet						

PRODUCT NUMBER SEE NOTE 7	NO. OF POSITIONS SEE NOTE 2	TAIL LENGTH ±.015/0.38	TERMINAL PLATING
50013- 1YYYA	YYY	.177/4.50	30μ"/.76μ GOLD
50013- 1YYYC	YYY	.533/13.54	30μ"/.76μ GOLD
50013- 1YYYD	YYY	.733/18.62	30μ"/.76μ GOLD
50013- 1YYYG	YYY	.250/6.35	30μ"/.76μ GOLD
50013- 1YYYJ	YYY	.120/3.05	30μ"/.76μ GOLD
50013- 3YYYA	YYY	.177/4.50	50μ"/1.27μ GOLD
50013- 3YYYC	YYY	.533/13.54	50μ"/1.27μ GOLD
50013- 3YYYD	YYY	.733/18.62	50μ"/1.27μ GOLD
50013- 3YYYG	YYY	.250/6.35	50μ"/1.27μ GOLD
50013- 3YYYJ	YYY	.120/3.05	50μ"/1.27μ GOLD
50013- 5YYYA	YYY	.177/4.50	30μ"/.76μ GXT
50013- 5YYYALF	YYY	.177/4.50	30μ"/.76μ GXT
50013- 5YYYC	YYY	.533/13.54	30μ"/.76μ GXT
50013- 5YYYCLF	YYY	.533/13.54	30μ"/.76μ GXT
50013- 5YYYD	YYY	.733/18.62	30μ"/.76μ GXT
50013- 5YYYDLF	YYY	.733/18.62	30μ"/.76μ GXT
50013- 5YYYG	YYY	.250/6.35	30μ"/.76μ GXT
50013- 5YYYGLF	YYY	.250/6.35	30μ"/.76μ GXT
50013- 5YYYJ	YYY	.120/3.05	30μ"/.76μ GXT
50013- 5YYYJLF	YYY	.120/3.05	30μ"/.76μ GXT

NOTES:

1. PRODUCT NUMBERING CODE:

50013 - X YYY Z LF

LEAD FREE (OPTIONAL)
TAIL LENGTH SEE TABLE
NO. OF POSITIONS SEE NOTE 2
PLATING SEE TABLE
BASE NUMBER

PRODUCT NUMBERING CODE FOR
SELECT LOAD/FMLB PART NUMBERS:

50013 - XXYYY LF

LEAD FREE (OPTIONAL)
SEQUENCE NUMBER
ALWAYS 'XX'
BASE NUMBER

2. THIS PRODUCT IS CONFIGURED IN SIZES OF 20 thru 122 COLUMNS IN INCREMENTS OF TWO.
i.e.: 20,22,24,26,.....118,120,122.
3. HOUSING MATERIAL: GLASS AND MINERAL FILLED HIGH TEMP. THERMOPLASTIC. FLAME RETARDANT PER UL94V-0. COLOR: BLACK.
PIN MATERIAL: PHOS BRONZE

4. COMPANY NAME, PART NUMBER AND LOT CODE TO APPEAR ON THIS SURFACE PER BUS-12-108.

5. REFERENCE 50811 FOR F.M.L.B. AVAILABLE OPTIONS AND WORKSHEET.

6. LENGTH FORMULAS:



DIM "A" .100/2.54 x NO. OF COLUMNS +1.05/26.7

DIM "B" .100/2.54 x NO. OF COLUMNS +.750/19.05

DIM "C" .100/2.54 x NO. OF COLUMNS DIVIDED BY 2 -.100/2.54

7. THIS PRODUCT (WITH "LF" SUFFIX) MEETS EUROPEAN UNION DIRECTIVES AND OTHER COUNTRY REGULATIONS AS DESCRIBED IN GS-22-008.

8. THIS HOUSING WILL WITHSTAND EXPOSURE TO 260° PEAK TEMPERATURE FOR 10-30 SECONDS IN A CONVECTION, INFRA-RED OR VAPOR PHASE REFLOW OVEN.

mat'l. code SEE NOTE 3				surface ISO 1302 ✓	tolerance ISO 406 ISO 1101	projection INCH/MM	product family HPC
ltr	ec	no	dr	date	tolerances unless otherwise specified		title
N					angles linear .XX ±.01/.3		3 ROW VERTICAL HEADER
					.XXX ±.005/.13		W/SOLDER TAIL PINS 1 G.P.
					0°±2° .XXX ±.0020/.051		scale 1:1
				dr	D. SHEAFFER 3/14/91		dwg no
				enr	S. CLARK 3/14/91		sheet 3 of 3 size
				chr	S. CLARK 3/14/91		50013 A3
				appd	S. CLARK 3/14/91		type Product Customer Drawing
sheet index	revision sheet						

form: A3

Mouser Electronics

Authorized Distributor

Click to View Pricing, Inventory, Delivery & Lifecycle Information:

[FCI / Amphenol:](#)

[50013-1348ALF](#) [50013-5348ALF](#)