

4

3

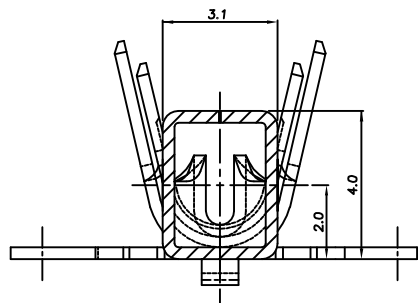
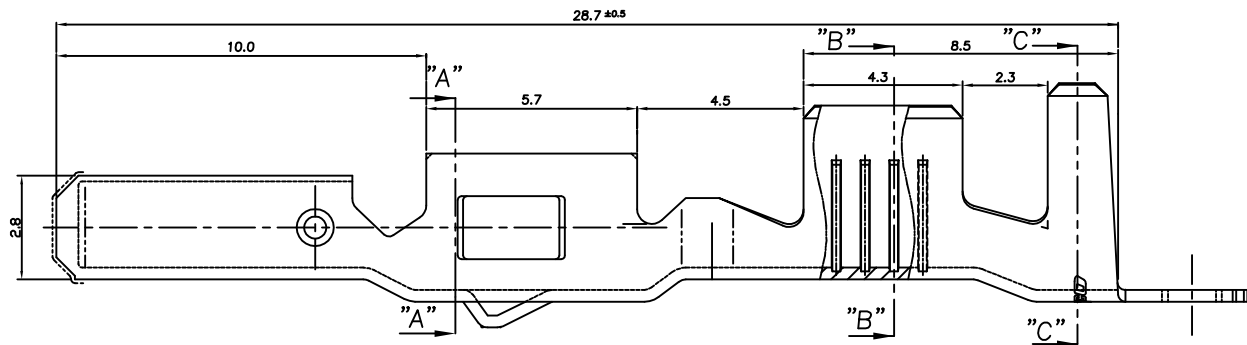
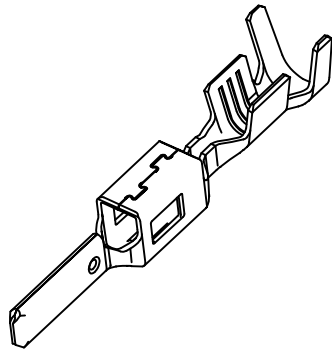
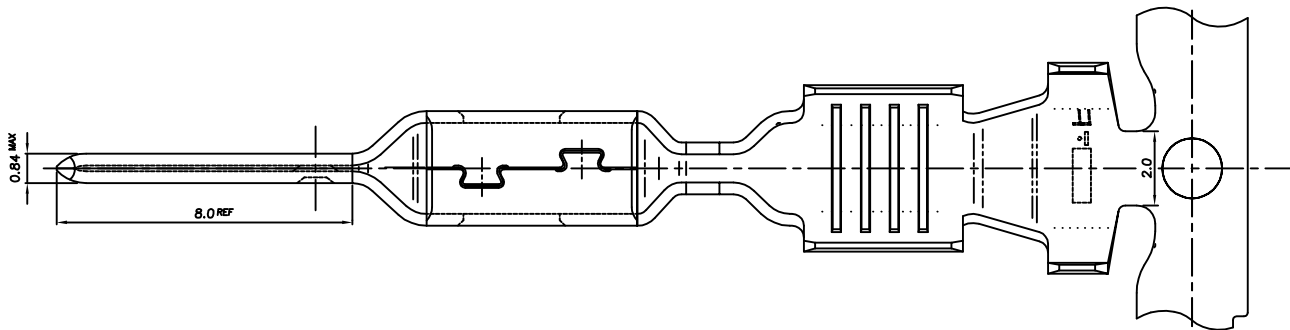
2

1

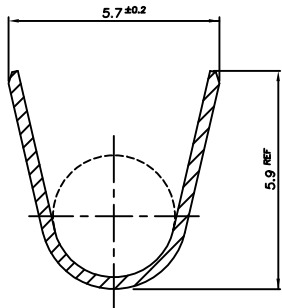
THIS DRAWING IS UNPUBLISHED. RELEASED FOR PUBLICATION

© COPYRIGHT BY TYCO ELECTRONICS CORPORATION, ALL RIGHTS RESERVED.

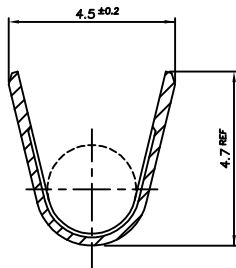
LOC	DIST	REVISIONS				
		P	LTR	DESCRIPTION	DATE	DWN APVD
DS	-		A2	REVISED (ECR-11-005815)	22.MAR.'11	KT HG



SECTION "A-A"



SECTION "C-C"



SECTION "B-B"

NOTE;
1. WIRE SIZE EQUIV 3.0 ~ 4.0SQ
APPLICATION SPEC: 114-61033

THIS DRAWING IS A CONTROLLED DOCUMENT FOR TYCO ELECTRONICS CORPORATION
IT IS SUBJECT TO CHANGE AND THE CONTROLLING ENGINEERING ORGANIZATION
SHOULD BE CONTACTED FOR THE LATEST REVISION.

DIMENSIONS: MM	TOLERANCES UNLESS OTHERWISE SPECIFIED:
	0 <XX<10 ± 0.25 10<XX<30 ± 0.3 ANGLES ± 3°
MATERIAL SEE TABLE	FINISH SEE TABLE

PRE-TINNED	BRASS 0.32THK.	1743426-1
FINISH	MATERIAL	PART NO
DWN KT JUNG CHK KT LIM APVD HG CHD PRODUCT SPEC - APPLICATION SPEC 114-61033 WEIGHT -	TE Connectivity NAME 2.8mm MCP-E NON-SEALED TAB CONTACT (LL) SIZE A3 CAGE CODE 00779 DRAWING NO C-1743426 RESTRICTED TO -	
CUSTOMER DRAWING		SCALE 5/1 SHEET 1 OF 1 REV A2

Mouser Electronics

Authorized Distributor

Click to View Pricing, Inventory, Delivery & Lifecycle Information:

[TE Connectivity:](#)

[1743426-1](#)