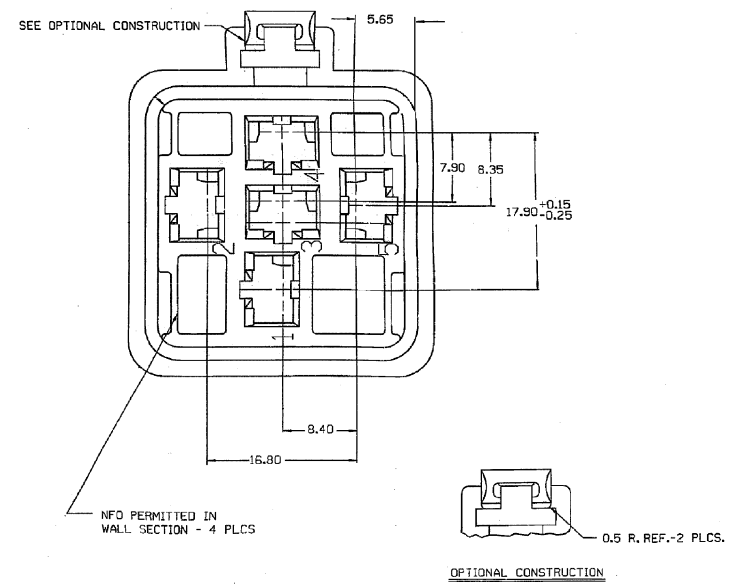
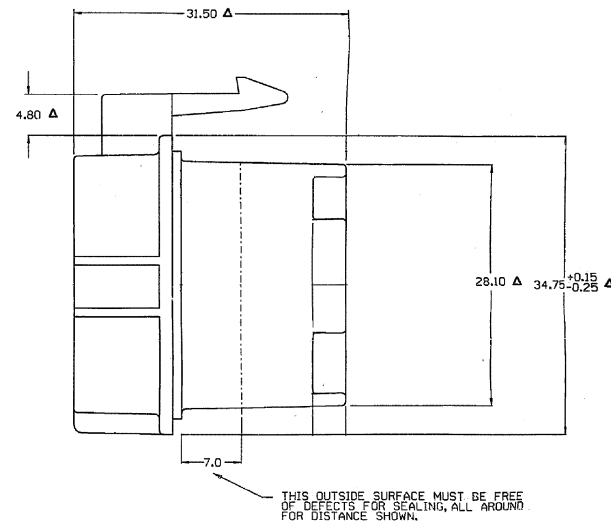
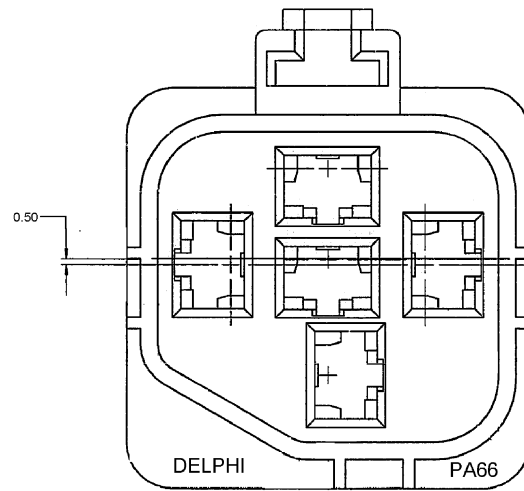
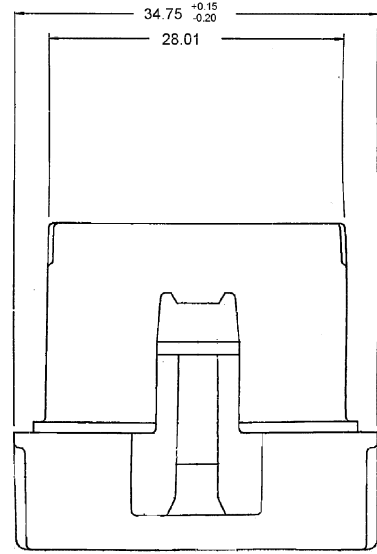


DELPHI PACKARD ELECTRIC SYSTEMS
WARREN, OHIO 44486

DWG STATUS				REVISION HISTORY				DATE	BY	CHK	APPV
DATE	STG	REV	CHK	N/P	ZONE	DESCRIPTION	DATE	BY	CHK	APPV	
31JAO2	R	G4	-	-		CREATED PART DRAWING AND MATL SPEC WAS R0067547 NYLON 6 - BLK	219215	OGG	OGG	ET	
18MR02	R	008	-	-		MATL SPEC WAS M3596002-PA6	222835	ESF	ESF	JH	



- NOTES**
1. ALL RADII 0.40 UNLESS OTHERWISE SPECIFIED.
 2. DIMENSIONS ARE TO FACE OF VIEW SHOWN, UNLESS OTHERWISE INDICATED.
 3. 1° DRAFT ON ALL OUTSIDE SURFACES, UNLESS OTHERWISE SPECIFIED.
 4. CAVITIES ARE IDENTICAL.
 5. CAVITIES TO ACCEPT 12033997 TERMINAL OR EQUIVALENT.
 6. MATING SHROUD REQUIREMENTS - 12068665.
 7. PART IS TO ACCEPT 12065664 CABLE SEAL OR EQUIVALENT.
 8. CENTERLINE OF BLADE TO CENTERLINE OF SEAL IS 2.10.
 9. CONNECTOR TO ACCEPT CPA 12052834 OR EQUIVALENT.
 10. THIS PART IS CONTROLLED FOR AUTOMATIC FEEDING AS DENOTED ON DRAWING WITH Δ.
 11. ALL TOOLS BUILT AFTER 2-1-90 TO BE BUILT TO OPTIONAL CONSTRUCTION.
 12. (2.3)(0.1) RAISED DELPHI CORPORATE BRAND TO BE LOCATED ON ANY EXTERIOR SURFACE, PREFERABLY VISIBLE AT FINAL ASSEMBLY. OPTIONAL CONSTRUCTION TO BE "FED" OR NO LOGO.
 13. MATERIAL RECYCLE CODE "PA66" PER SAE J1344 (2.3)(0.1) RAISED CHARACTERS AS SHOWN TO BE LOCATED ON ANY EXTERIOR SURFACE. OPTIONAL CONSTRUCTION TO BE NO MATERIAL RECYCLE CODE.

DELPHI Automotive Systems		MATERIAL SPEC M3592001 PA66 IM HS BLK		TOLERANCE UNLESS OTHERWISE SPECIFIED: DIMENSIONS: 3 DEC PLACES ANGLES: 2 DEC PLACES
SUBSTANCES OF CONCERN AND RECYCLED CONTENT PER DELPHI - A 10949001				
CODE NUMBER 6900		DWG DATE 180284	SCALE 4:1	DISTR CODE
DC SPEC		STYLE		
PART GEOMETRY 2D PLANAR		UNLESS OTHERWISE SPECIFIED: THIS DOCUMENT IS IN ACCORDANCE WITH ASME Y14.5M - 1994 AS AMENDED BY THE 0M GLOBAL DIMENSIONING AND TOLERANCING ADDENDUM - 1997. ALL DIMENSIONAL TOLERANCES AND RELATED DATUMS APPLY. RULE #1 (PREFER FORM AT MMC) DOES NOT APPLY WHEN RELATIONSHIP BETWEEN FEATURES IS ESTABLISHED BY ORIENTATION OR LOCATION TOLERANCES. SEPARATE POSITION CALLOUTS MAY BE GAGED SEPARATELY REGARDLESS OF DATUM REFERENCES.		
CHANGE RESTRICTED NO MANUAL CHANGES		REFERENCE	DR	DATE
DO NOT SCALE		APV01	D. GOMEZ	31JAO2
METRIC UNLESS OTHERWISE SPECIFIED ALL DIMENSIONS ARE IN MILLIMETERS		APV02	D. GOMEZ	31JAO2
		APV03	E. TRACEY	04FE02
		APV04		
		APV05		
DRAWING NAME CONN 5F M/P 630 P2S				
SHEET NUMBER 1 OF 1	DRAWING NUMBER 12065662	DWG STATUS R 008	SIZE A0	

Mouser Electronics

Authorized Distributor

Click to View Pricing, Inventory, Delivery & Lifecycle Information:

[Aptiv:](#)

[12065662](#)