

4

3

2

1

THIS DRAWING IS UNPUBLISHED.

RELEASED FOR PUBLICATION

© COPYRIGHT

ALL RIGHTS RESERVED.

LOC

DIST


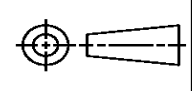
REVISIONS

P	LTR	DESCRIPTION	DATE	DWN	APVD
	B2	ECR-16-009822	15JUL2016	GK	SD

REPLACED BY OCEAN STYLE APPLICATOR PART  
NUMBER 2836044-1

FOR REPLACEMENT PARTS FOR APPLICATOR 1385040  
REFER TO ADDITIONAL PAGE(S). SPARE PARTS KIT (IF LISTED)  
WILL REMAIN AVAILABLE.

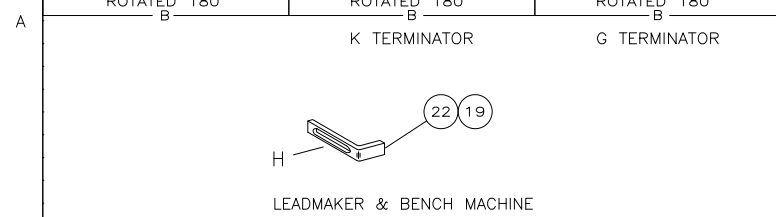
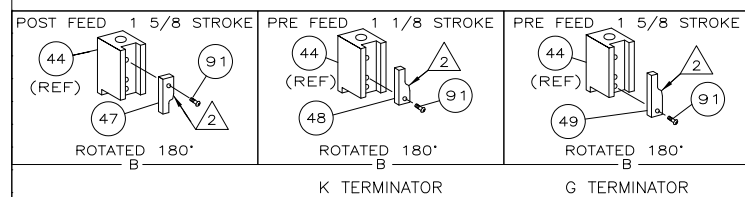
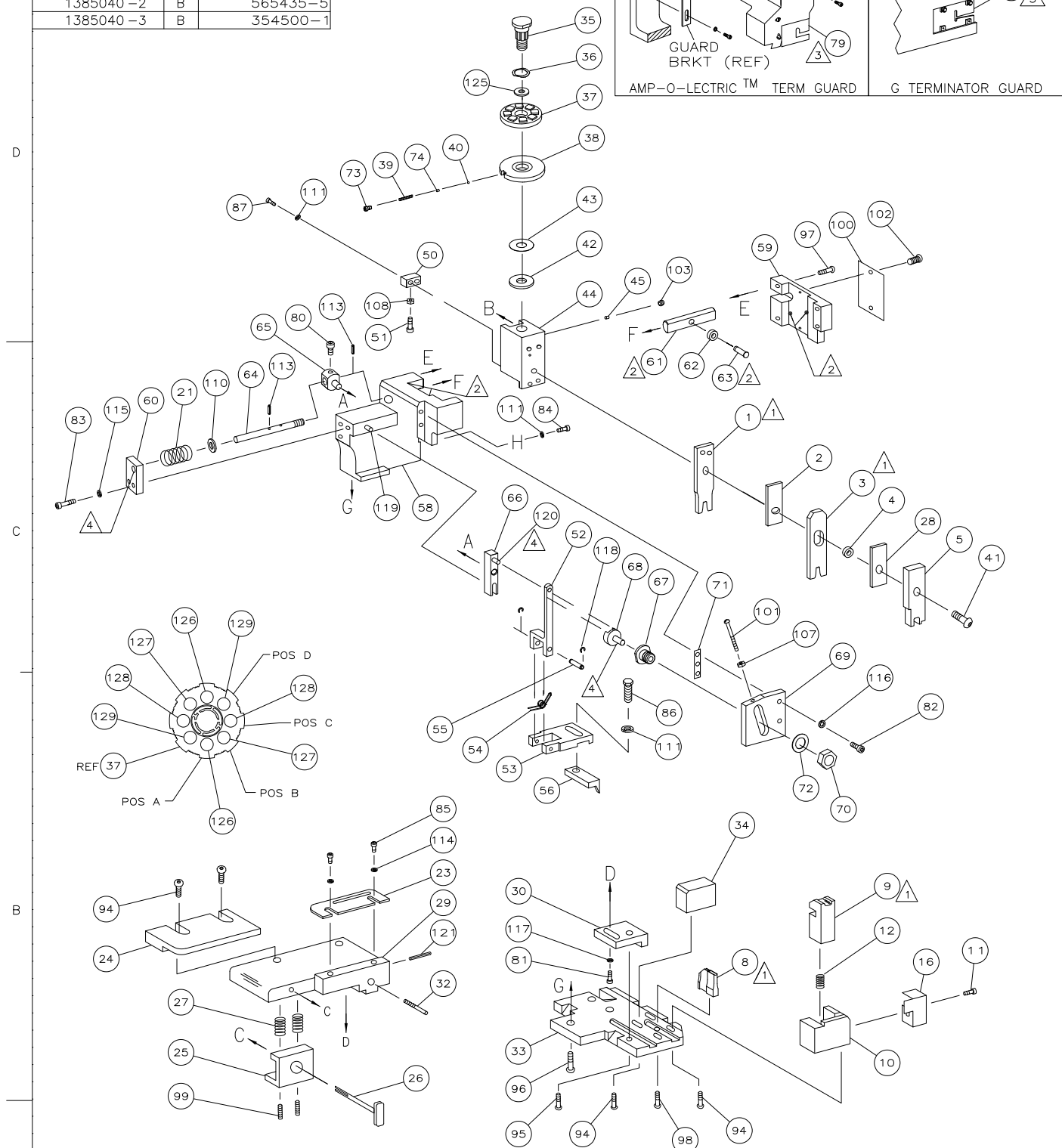
THE REPLACEMENT OCEAN STYLE APPLICATOR HAS THE  
SAME TERMINATOR/PRESS INTERFACE AS APPLICATOR  
1385040

THIS DRAWING IS A CONTROLLED DOCUMENT.		DWN	GOPALAKRISHNA HV		 TE Connectivity			
		CHK	GOPALAKRISHNA HV					
DIMENSIONS:		TOLERANCES UNLESS OTHERWISE SPECIFIED:		APVD	NAME			
		0 PLC ± 1 PLC ± 2 PLC ± 3 PLC ± 4 PLC ± ANGLES ±		STOUGH DALE		SIDE FEED HDM APPLICATOR		
				PRODUCT SPEC				
				APPLICATION SPEC				
				WEIGHT				
MATERIAL		FINISH		SIZE	CAGE CODE	DRAWING NO	RESTRICTED TO	
				A3		©- 1385040		
CUSTOMER DRAWING				SCALE	SHEET 1 OF 2	REV	B2	

		2				1	
LOC	DIST	REVISIONS					
A	66	P	LYR	DESCRIPTION	DATE	OWN	APVD
		B1		ECR-08-006960	3-2008	MY	GB



-1	LEADMAKER	MECH POST FEED
-2	BENCH MODEL K	MECH PRE FEED
-3	BENCH MODEL G	MECH PRE FEED



1. RECOMMENDED SPARE PARTS.
2. GREASE LIGHTLY.
3. GUARD MUST BE IN PLACE WHEN OPERATING APPLICATOR IN A BENCH MACHINE.
4. LUBRICATE DAILY USING NO. 20 MACHINE OIL.
5. ITEMS WITH QTY OF REF SPECIFIED (EXCEPT ITEMS 78 AND 79) ARE USED ON ITEM 46.
6. CUT TO LENGTH AT ASSY
7. TO BE DETERMINED AT ASSEMBLY.

	2	2	2	-	5-354779-8	PIN, WIRE DISC (.3280)D	129
	2	2	2	-	5-354779-6	PIN, WIRE DISC (.3270)C	128
	2	2	2	-	5-354779-2	PIN, WIRE DISC (.3250)B	127
	2	2	2	-	4-354779-8	PIN, WIRE DISC (.3230)A	126
	1	1	1	-	986950-1	WASHER, FLAT PRECISION	125
	1	1	1	-	217238-1	GENERAL INSTRUCTION PACKAGE	124
	1	1	1	-	4088040	SF APPL INST 408-8040	123
							122
	1	1	1	-	4-21028-0	PIN,SLT SPR(Ø.093x.75)ST GDE PL	121
	REF	REF	REF	-	1-21030-1	PIN,DOWEL(Ø.187x.50)LEVER	120
	REF	REF	REF	-	1-21030-6	PIN,DOWEL(Ø.187x1.25)HOUSING	119
	REF	REF	REF	-	21045-3	RING,RET "C"(Ø.187)FD FING PIN	118
	1	1	1	-	21024-5	WASHER, LOCK(#10)ADJ BLOCK	117
	REF	REF	REF	-	21024-5	WASHER,LOCK(#10)ADJ PLATE	116
	REF	REF	REF	-	21024-5	WASHER,LOCK(#10)FEED GDE ROD	115
	2	2	2	-	21024-2	WASHER,LOCK(#4)FRONT STP GUIDE	114
	REF	REF	REF	-	5-21028-1	PIN,SLT SPR(Ø.125x.50)ADJ ROD	113
							112
	4	4	4	-	21024-4	WASHER,LOCK(#8)STRIPPER	111
	REF	REF	REF	-	21899-4	WASHER,FLAT(Ø5/16)SCREW ADJ	110
							109
	1	1	1	-	21018-5	NUT,HEX(NO.6)HOLDDOWN	108
	REF	REF	REF	-	21068-5	NUT,HEX(6-32)FEED ADJ	107
							106
							105
							104
	1	1	1	-	21009-2	SCR,SKT SET(1/4-20x.25 LW)RAM	103
	2	2	2	-	21017-2	SCR,DRIVE(#2x.19)ID PLATE	102
	REF	REF	REF	-	6-23715-5	SCR,PAN HD(6-32x1.50)FEED ADJ	101
	1	1	1	-	461264-1	PLATE, IDENTIFICATION	100
	2	2	2	-	5-21006-6	SCR,SET(10-32x.75)DRAG	99
	1	1	1	-	22733-8	SCR,BHC(8-32x.38 LW)ANVIL	98
	REF	REF	REF	-	2-21002-9	SCR,BHC(10-32x.75)CAP	97
	REF	REF	REF	-	2-22733-8	SCR,BHC(1/4-20x.62)HOUSING	96
	REF	REF	REF	-	2-21002-7	SCR,BHC(10-32x.50)SG ADJ BLOCK	95
	6	6	6	-	2-21002-2	SCR,BHC(8-32x.50)TERM H DWN	94
							93
							92
	1	1	1	-	1-21002-7	SCR,BHC(6-32x.38)CAM	91
							90
							89
							88
6	2	2	2	-	2-21000-7	SCR,SHC(8-32x.48)DEP-HOLD	87
	1	1	1	-	2-22603-0	SCR,HEX HD(8-32x.31)FEED FINGER	86
	2	2	2	-	1-21000-3	SCR,SHC(4-40x.25)F ST GUIDE	85
	1	1	1	-	2-21000-7	SCR,SHC(8-32x.50)STRIPPER	84
	REF	REF	REF	-	3-21000-7	SCR,SHC(10-32x.75)FEED ROD GD	83
	REF	REF	REF	-	3-21000-6	SCR,SHC(10-32x.62)FD ADJ BLK	82
	1	1	1	-	3-21000-4	SCR,SHC(10-32x.38)SG ADJ BL	81
	REF	REF	REF	-	3-21000-4	SCR,SHC(10-32x.38)PIVOT BLK	80
3	-	REF	-	-	455749-1	GUARD, WINDOW	79
	REF	-	-	-	679532-1	INSERT, GUARD	78
							77
							76
							75
	1	1	1	-	690603-1	SPRING, ASSIST	74
	1	1	1	-	23030-1	SCR,SHC(6-32x.25 SL)INS DISC	73
	REF	REF	REF	-	458109-1	WASHER, SPECIAL	72
	REF	REF	REF	-	690517-1	SPACER	71
	-3	-2	-1	U/M	PART NO	DESCRIPTION	ITEM NO
	QTY REQD	PER ASSY				PARTS LIST	

	REF	REF	REF	—	22594-8	NUT, HEX(1/2-20)	70
	REF	REF	REF	—	240628-1	PLATE, ADJUSTMENT	69
	REF	REF	REF	—	240626-1	SHAFT, PIVOT	68
	REF	REF	REF	—	240633-1	BUSHING	67
	REF	REF	REF	—	455680-1	LEVER, INTERMEDIATE	66
	REF	REF	REF	—	240629-1	BLOCK, PIVOT	65
	REF	REF	REF	—	240632-2	SCREW, ADJ FEED ROD	64
	REF	REF	REF	—	240659-3	PIN, CAM ROLLER	63
	REF	REF	REF	—	240658-1	ROLLER, CAM	62
	REF	REF	REF	—	454398-2	ROD, FEED	61
	REF	REF	REF	—	454178-1	GUIDE, FEED ROD	60
	REF	REF	REF	—	454220-1	CAP, RAM	59
	REF	REF	REF	—	454485-1	HOUSING	58
							57
	1	1	1	—	458537-2	PAWL, FEED	56
	REF	REF	REF	—	240624-1	PIN, FEED FINGER	55
	REF	REF	REF	—	691499-1	SPRING, FEED FINGER	54
	REF	REF	REF	—	690541-1	HOLDER, FEED FINGER	53
	REF	REF	REF	—	455679-1	LEVER, TERMINAL FEED ARM	52
	1	1	1	—	811242-2	BUMPER, HOLDDOWN	51
	1	1	1	—	690753-1	SPACER, TONKER	50
	1	—	—	—	690602-6	CAM, PRE-FEED 1 5/8 ST	49
	—	1	—	—	690602-5	CAM, PRE-FEED 1 1/8 ST	48
	—	—	1	—	690501-4	CAM, POST-FEED 1 5/8 ST	47
	1	1	1	—	459456-1	APPLICATOR, BASIC (SUBASSY)	46
	1	1	1	—	690191-1	PLUG, NYLON	45
	1	1	1	—	455673-3	RAM	44
	1	1	1	—	690125-1	WASHER, LAMINATED	43
	1	1	1	—	690124-1	WASHER, RAM	42
	1	1	1	—	7-21002-9	BOLT, CRIMPER(5/16x1.00)	41
	1	1	1	—	23241-6	BALL, STEEL	40
	1	1	1	—	690170-1	SPRING, COMPRESSION	39
	1	1	1	—	690142-1	DISC, INSULATION	38
	1	1	1	—	354777-1	WIRE DISC, PLASTIC	37
	1	1	1	—	22480-5	WASHER, SPRING	36
	1	1	1	—	690212-1	POST, RAM	35
	1	1	1	—	690786-1	SUPPORT, TERMINAL	34
	REF	REF	REF	—	455675-1	PLATE, BASE	33
	1	1	1	—	690432-3	SCREW, ADJUSTMENT	32
							31
	REF	REF	REF	—	455689-1	BLOCK, STRIP GUIDE ADJ	30
	1	1	1	—	455671-6	PLATE, STRIP GUIDE	29
	1	1	1	—	455888-8	SPACER, FRONT SHEAR DEP	28
	2	2	2	—	1-22284-0	SPRING, DRAG	27
	1	1	1	—	690546-1	LEVER, DRAG RELEASE	26
	1	1	1	—	240792-1	DRAG, TERMINAL	25
	1	1	1	—	5-690504-9	GUIDE, STRIP (REAR)	24
	1	1	1	—	690438-1	GUIDE, STRIP (FRONT)	23
	—	—	1	—	690472-2	STRIPPER	22
	REF	REF	REF	—	4-22284-9	SPRING, FEED RETURN	21
							20
	1	1	—	—	691353-1	STRIPPER	19
							18
							17
	1	1	1	—	318563-1	GUARD, CHIP, FRONT	16
							15
							14
							13
	1	1	1	—	3-22280-3	SPRING, SHEAR	12
	1	1	1	—	690461-1	STOP, SHEAR	11
	1	1	1	—	690459-1	HOLDER, SHEAR (FRONT)	10
1	1	1	1	—	462006-1	SHEAR, FLOAT (FRONT)	9
	1	1	1	—	2-805887-4	ANVIL	8
							7
							6
	1	1	1	—	2-455889-0	DEPRESSOR, SHEAR (FRONT)	5
	1	1	1	—	238011-6	SPACER, BLOCK CRIMPER	4
1	1	1	1	—	3-683453-3	CRIMPER, INSULATION	3
	1	1	1	—	455888-2	SPACER, CRIMPER	2
1	1	1	1	—	2-456402-9	CRIMPER, WIRE	1
	-3	-2	-1	U/M	PART NO	DESCRIPTION	ITEM NO
	QTY	REQD	PER	ASSY	PARTS LIST		

THIS DRAWING IS A CONTROLLED DOCUMENT.		OWN <b>B. HIGMAN</b>	13MAR00	 Tyco Electronics Corporation Harrisburg, PA 17105-3608	
DIMENSIONS:		CHK <b>B. HIGMAN</b>	13MAR00		
TOLERANCES UNLESS OTHERWISE SPECIFIED:		APPRO <b>TELRIN</b>	13MAR00	NAME SIDE FEED HDM APPLICATOR	
INCHES		PRODUCT SPEC			
		0 PLC ± -		SIZE    GAGE CODE    DRAWING NO.    RESTRICTED TO	
		1 PLC ± -			
		2 PLC ± -			
		3 PLC ± -			
ANGLES ± -		APPLICATION SPEC		A1 00779 © 1385040	
FINISH		WEIGHT	F		
MATERIAL		CUSTOMER DRAWING		SCALE	
				SHEET	1 OF 1
				REV	R1

# Mouser Electronics

Authorized Distributor

Click to View Pricing, Inventory, Delivery & Lifecycle Information:

[TE Connectivity:](#)

[1385040-1](#)