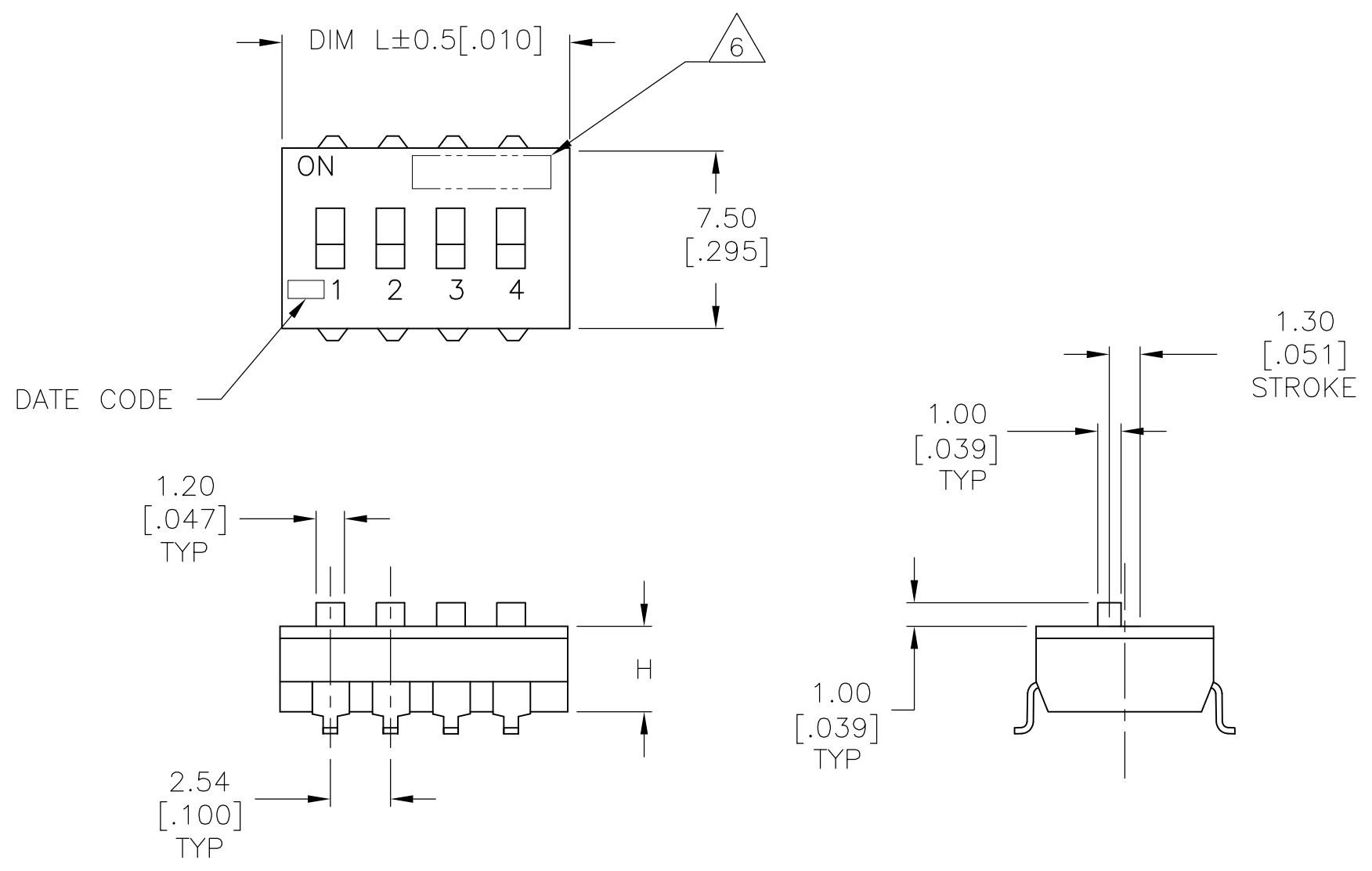


D

C

B

A



SPECIFICATIONS:

MATERIAL
BASE, PPS, UL94V-0, BLACK
COVER, PPS, UL94V-0, BLACK
ACTUATOR, PA6T, UL94V-0, WHITE
FIXED CONTACT/TERMINAL, CU ALLOY-GOLD FLASH OVER NICKEL
MOVING CONTACT, CU ALLOY, PLATE-GOLD FLASH/NICKEL

ELECTRICAL
MAX CONTACT RATING SWITCHING, 100MILLIAMP @ 24 VDC
MIN CONTACT RATING SWITCHING, .1MICROAMP @ 1 MILLIVOLT
MAX CONTACT NON-SWITCHING, 1AMP @ 5 VDC
INITIAL CONTACT RESISTANCE, 50 MILLIOHMS MAX.
CONTACT RESISTANCE (AFTER ENVIRONMENTAL TEST), 100 MILLIOHMS
CONTACT RESISTANCE (AFTER GAS TEST), 300 MILLIOHMS
INSULATION RESISTANCE, 1,000 MEGOHMS MIN. @ 100 VDC
DIELECTRIC STRENGTH, 500 VAC RMS @ SEA LEVEL
LIFE EXPECTANCY, 1,000 CYCLES

MECHANICAL
OPERATING FORCE, LESS THAN 800 GRAMS
CONTACT PRESSURE, 280,000 PSI

ENVIRONMENTAL
OPERATING TEMPERATURE, -30 TO +85 DEGREES C
STORAGE TEMPERATURE, -45 TO +105 DEGREES C
CLEANING, AQUEOUS OR SOLVENT
SOLDER HEAT RESISTANCE, PER 109-201,COND B, SWITCH "OFF".
SOLDERABILITY PER JIS C 0050 & JIS C 0053

- 1 SWITCHES TO BE RECEIVED IN THE "OFF" POSITION AND PACKAGED IN CLEAR TUBES TO ACCOMMODATE AUTO-INSERTION.
- 2 TOP SURFACE TO BE CLEARLY MARKED AS SHOWN.
- 3 SWITCHES TO BE BLACK WITH WHITE ACTUATORS AND MARKINGS.
- 4

TERMINAL OPTION: OLD T&B P/N ADExxS, SA OR SB
S= OUTSIDE "L" TERMINALS; SA= INSIDE "L" TERMINALS;
SB= BUTT TERMINALS.
- 5 ALL MATERIALS AND FINISHES SHALL COMPLY WITH EU DIRECTIVE 2002/95/EC OF 27JAN2003 (ROHS).
- 6

OBSOLETE PARTS: OBSOLETE CIS STREAMLINING PER D.RENAUD/D.SINISI.
- 7

TAPE AND REEL PACKING PER PAGE 3 SPECIFICATIONS.

SEE SHEET 2 FOR PART NUMBER TABLE
AND MOUNTING OPTIONS

THIS DRAWING IS A CONTROLLED DOCUMENT.		DWN B.S.VISWESWARA	10FEB05	TE Connectivity	
DIMENSIONS: mm [INCHES]		CHK M.SARVER	-		
		APVD M.SARVER	-	NAME DIP SWITCH, ADE-SMT SERIES	
		PRODUCT SPEC	-		
		APPLICATION SPEC	-		
MATERIAL -		WEIGHT	-	SIZE A2	CAGE CODE -
FINISH -		CUSTOMER DRAWING	-	DRAWING NO C=1825058	RESTRICTED TO -
		SCALE 4:1	SHEET 1 OF 3	REV S4	

D

C

B

A

1825058

D

D

C

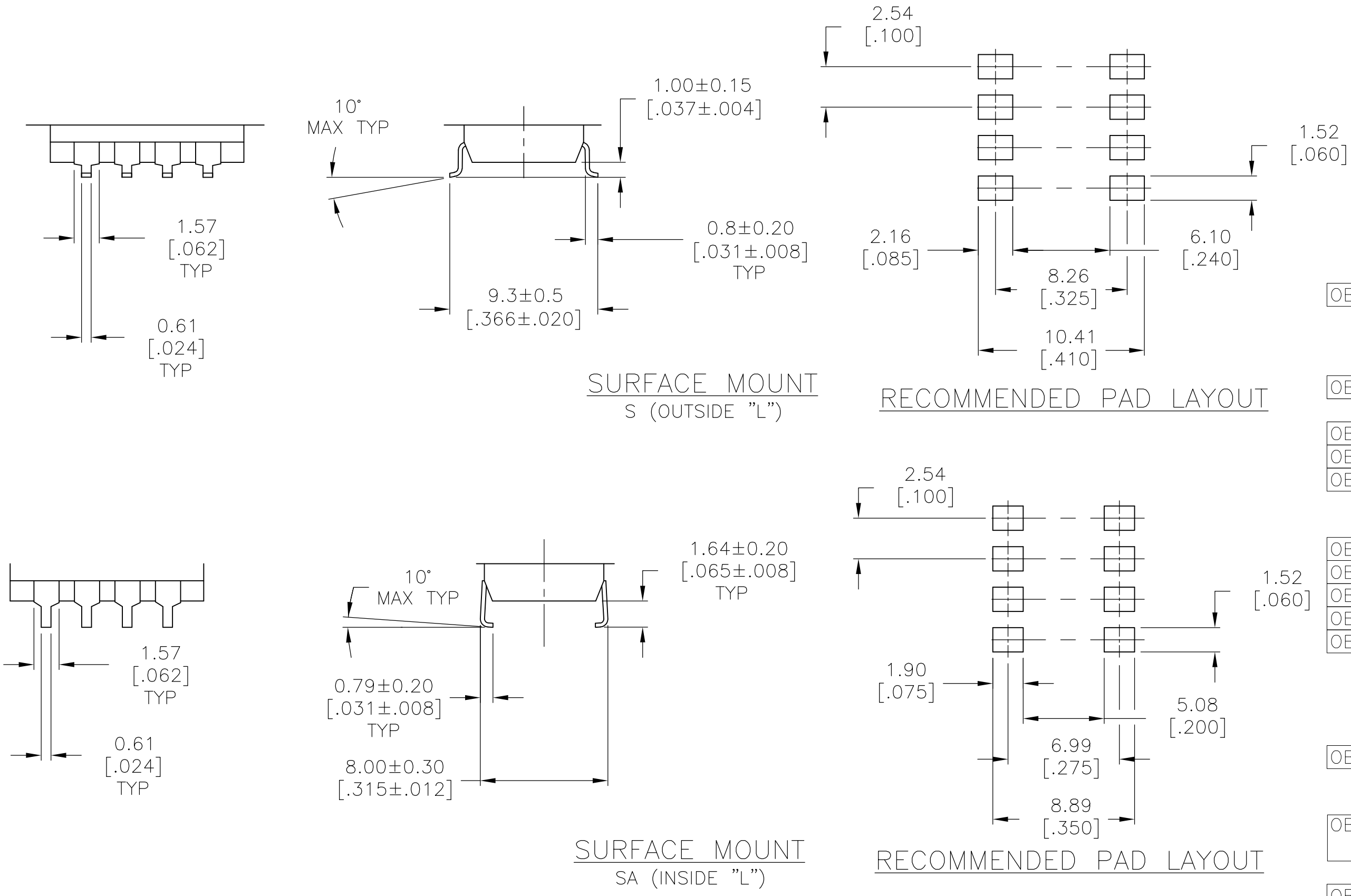
C


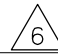


B

B

A

A



OBSOLETE	ADE12STR04	3.61	[.142]	32.51	[1.280]	12	4-1825058-1		
	ADE10STR04	3.50	[.138]	27.30	[1.075]	10	4-1825058-0		
	ADE09STR04	3.50	[.138]	24.54	[.978]	9	3-1825058-9		
	ADE08STR04	3.50	[.138]	22.30	[.878]	8	3-1825058-8		
	OBSOLETE	ADE07STR04	3.50	[.138]	19.76	[.778]	7	3-1825058-7	
	ADE06STR04	3.50	[.138]	17.22	[.678]	6	3-1825058-6		
OBSOLETE	ADE05STR04	3.50	[.138]	14.68	[.578]	5	3-1825058-5		
OBSOLETE	ADE04STR04	3.50	[.138]	12.14	[.478]	4	3-1825058-4		
OBSOLETE	ADE03STR04	3.50	[.138]	9.60	[.378]	3	3-1825058-3		
	ADE02STR04	3.50	[.138]	7.00	[.276]	2	3-1825058-2		
	ADE04SATR04	3.50	[.138]	12.14	[.478]	4	3-1825058-1		
OBSOLETE	ADE12SB04	3.61	[.142]	32.51	[1.280]	12	3-1825058-0		
OBSOLETE	ADE12SA04	3.61	[.142]	32.51	[1.280]	12	2-1825058-9		
OBSOLETE	ADE12S04	3.61	[.142]	32.51	[1.280]	12	2-1825058-8		
OBSOLETE	ADE10SB04	3.50	[.138]	27.30	[1.075]	10	2-1825058-7		
OBSOLETE	ADE10SA04	3.50	[.138]	27.30	[1.075]	10	2-1825058-6		
	ADE10S04	3.50	[.138]	27.30	[1.075]	10	2-1825058-5		
	ADE09SB04	3.50	[.138]	24.54	[.978]	9	2-1825058-4		
	ADE09SA04	3.50	[.138]	24.54	[.978]	9	2-1825058-3		
	ADE09S04	3.50	[.138]	24.54	[.978]	9	2-1825058-2		
	OBSOLETE	ADE08SB04	3.50	[.138]	22.30	[.878]	8	2-1825058-1	
	ADE08SA04	3.50	[.138]	22.30	[.878]	8	2-1825058-0		
	ADE08S04	3.50	[.138]	22.30	[.878]	8	1-1825058-9		
OBSOLETE	ADE07SB04	3.50	[.138]	19.76	[.778]	7	1-1825058-8		
		ADE07SA04	3.50	[.138]	19.76	[.778]	7	1-1825058-7	
	ADE07S04	3.50	[.138]	19.76	[.778]	7	1-1825058-6		
OBSOLETE	ADE06SB04	3.50	[.138]	17.22	[.678]	6	1-1825058-5		
OBSOLETE	ADE06SA04	3.50	[.138]	17.22	[.678]	6	1-1825058-4		
	ADE06S04	3.50	[.138]	17.22	[.678]	6	1-1825058-3		
	OBSOLETE	ADE05SB04	3.50	[.138]	14.68	[.578]	5	1-1825058-2	
		ADE05SA04	3.50	[.138]	14.68	[.578]	5	1-1825058-1	
			ADE05S04	3.50	[.138]	14.68	[.578]	5	1-1825058-0
		ADE04SB04	3.50	[.138]	12.14	[.478]	4	1825058-9	
OBSOLETE	ADE04SA04	3.50	[.138]	12.14	[.478]	4	1825058-8		
	ADE04S04	3.50	[.138]	12.14	[.478]	4	1825058-7		
	OBSOLETE	ADE03SB04	3.50	[.138]	9.60	[.378]	3	1825058-6	
	OBSOLETE	ADE03SA04	3.50	[.138]	9.60	[.378]	3	1825058-5	
		ADE03S04	3.50	[.138]	9.60	[.378]	3	1825058-4	
OBSOLETE	ADE02SB04	3.50	[.138]	7.00	[.276]	2	1825058-3		
OBSOLETE	ADE02SA04	3.50	[.138]	7.00	[.276]	2	1825058-2		
	ADE02S04	3.50	[.138]	7.00	[.276]	2	1825058-1		
	T&R P/N	DIM H	DIM L	POSITION	PART NO.				

THIS DRAWING IS A CONTROLLED DOCUMENT.

DIMENSIONS:
mm [INCHES]

0 PLC ± -

1 PLC ± -

2 PLC ± 0.30[.012]

3 PLC ± -

4 PLC ± -

ANGLES ± -

MATERIAL
-

FINISH
-

DWN
B.S.VISWESWARA

CHK
M.SARVER

APVD
M.SARVER

PRODUCT SPEC
-

APPLICATION SPEC
-

WEIGHT
-

CUSTOMER DRAWING

10FEB05

TE Connectivity

DIP SWITCH, ADE-SMT SERIES

SIZE
A2

CAGE CODE
-

DRAWING NO
C=1825058

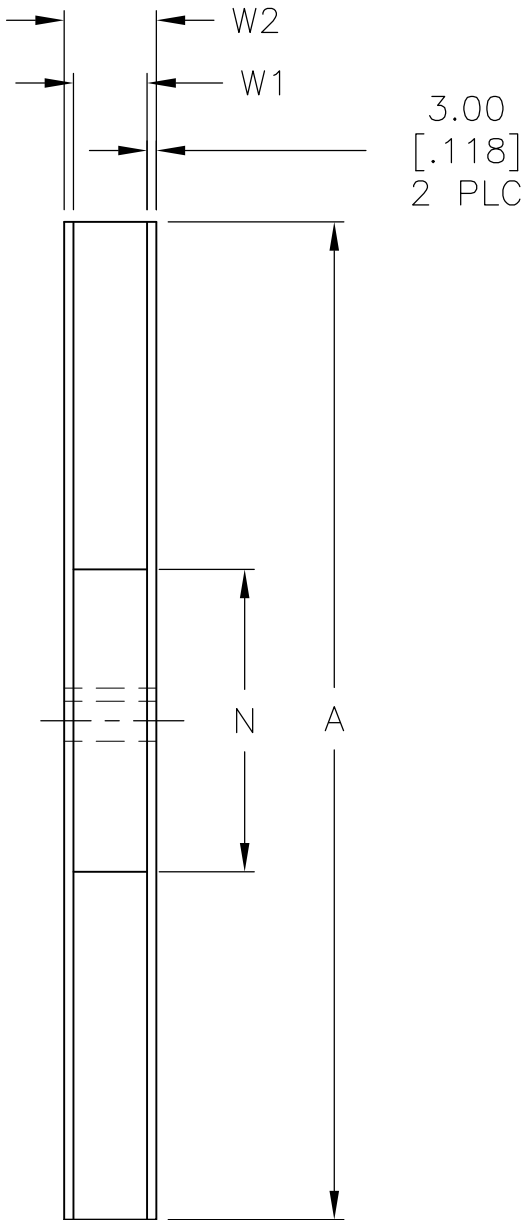
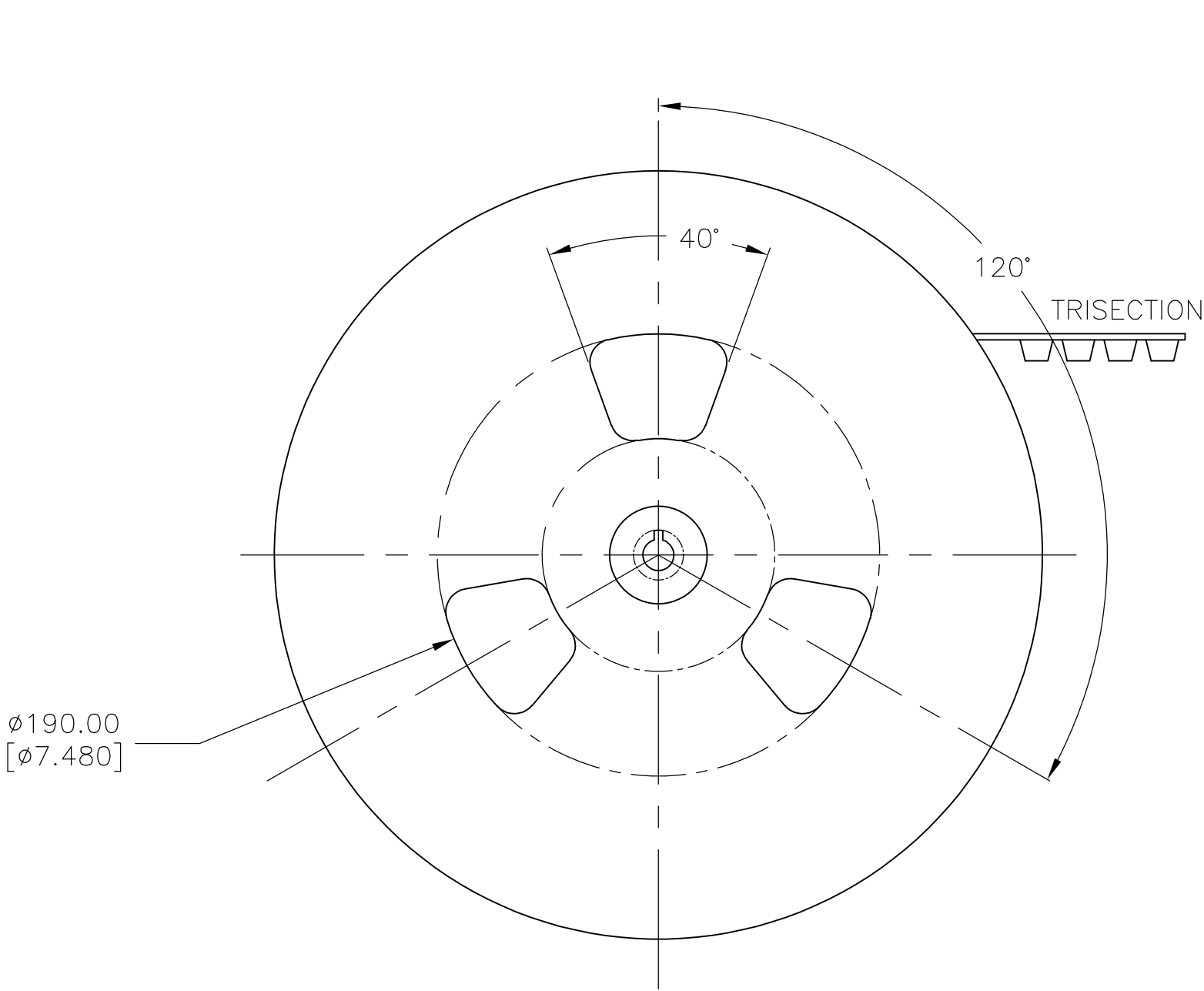
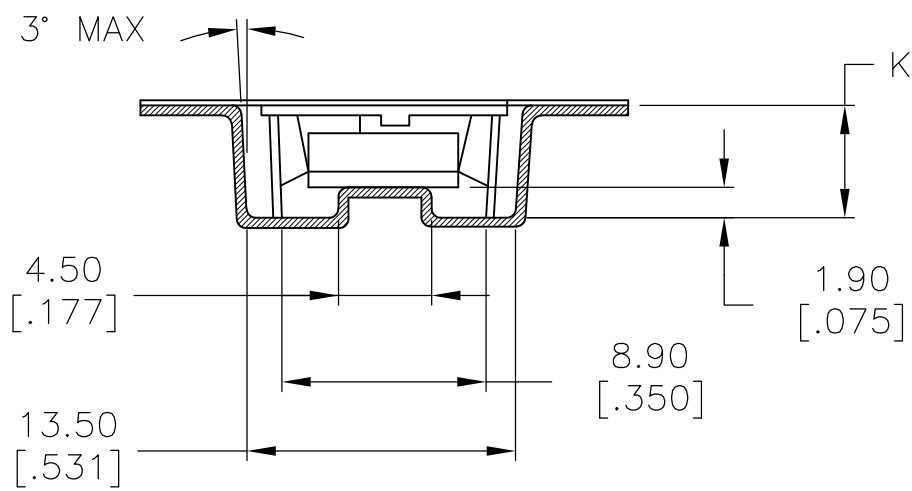
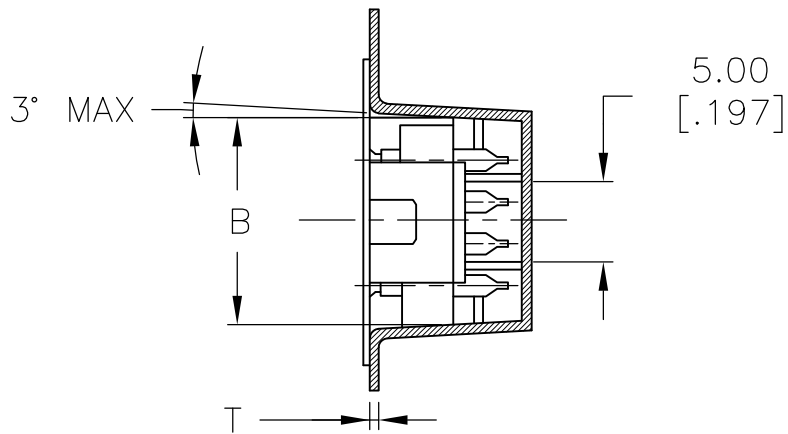
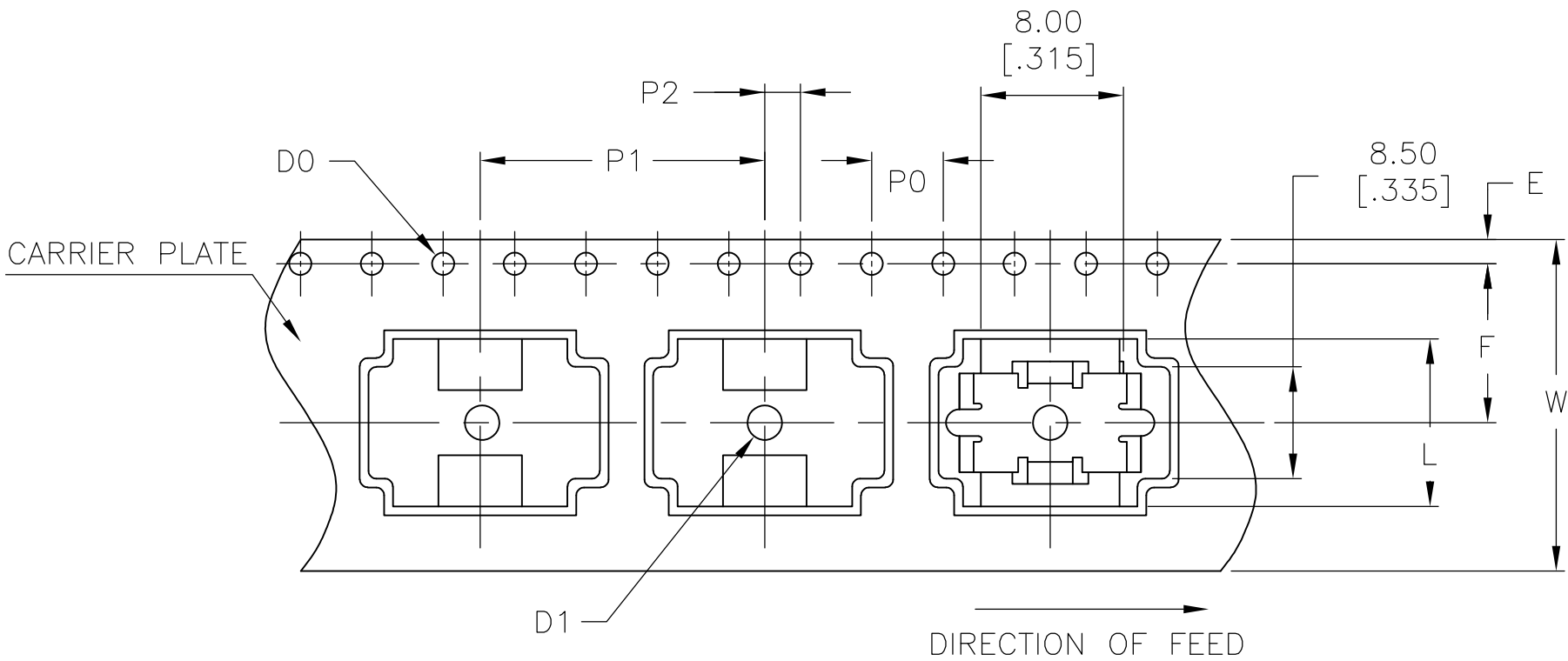
RESTRICTED TO
-

SCALE
4:1

SHEET
2 of 3

REV
S4

REVISIONS					
P	LTR	DESCRIPTION	DATE	DWN	APVD
	-	SEE SHEET 1	-	-	-



	DESCRIPTION	MATERIAL	DIMENSION	FINISH	REMARKS
1	REEL	SIDE: CARDBOARD CORE: STYLOFOAM	MENTIONED BELOW		
2	EMBOSSED TAPE	-	MENTIONED BELOW	ANTISTATIC	BLACK
3	TOP COVER TAPE	-	MENTIONED BELOW	ANTISTATIC	TRANSPARENT

4P	ø330.00±2.10 [12.992±.082]	ø100 [3.940]	24.40 +2.00 0 [.960 +.790 .000]	30.40 [1.997]
NO OF POSITION	A	N (MIN)	W1	W2 (MAX)

4P	ø1.50 +0.10 0 [ø.059+.003 .000]	4.00±0.10 [.157±.003]	16.00±0.10 [.629±.003]	2.00±0.15 [.078±.005]	11.50±0.10 [.453±.003]	7.40±0.10 [.291±.003]
NO OF POSITION	D1	P0	P1	P2	F	K

4P	24.00±0.30 [.944±.011]	12.90±0.10 [.507±.003]	1.75±0.10 [.068±.003]	0.50±0.05 [.020±.001]	12.14±0.50 [.477±.020]	ø1.50+0.10 0 [ø.059+.003 .000]
NO OF POSITION	W	B	E	T	L	DO

THIS DRAWING IS A CONTROLLED DOCUMENT.

DIMENSIONS:
mm [INCHES]

TOLERANCES UNLESS
OTHERWISE SPECIFIED:

0 PLC	±	-
1 PLC	±	-
2 PLC	±	0.30[.012]
3 PLC	±	-
4 PLC	±	-
ANGLES	±	-
FINISH	-	-

MATERIAL

-

DWN
B.S.VISWESWARA

CHK
M.SARVER

APVD
M.SARVER

PRODUCT SPEC

APPLICATION SPEC

WEIGHT

CUSTOMER DRAWING

10FEB05

TE Connectivity

NAME

DIP SWITCH, ADE-SMT SERIES

SIZE
A2

CAGE CODE
-

DRAWING NO
C=1825058

RESTRICTED TO
-

SCALE
4:1

SHEET
3 OF 3

REV
S4

Mouser Electronics

Authorized Distributor

Click to View Pricing, Inventory, Delivery & Lifecycle Information:

[TE Connectivity:](#)

[ADE08S04](#)