

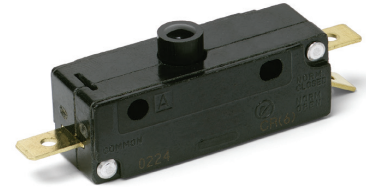
A Series General Purpose Snap-acting Switches

Features/Benefits

- Low cost—high performance
- Long electrical life
- Single and double pole
- Sealed actuator option available

Typical Applications

- Enclosure equipment
- Garage door openers
- Vending machines



Specifications

CONTACT RATING: From low level* to 25 AMPS @ 277 V AC.

ELECTRICAL LIFE: 75,000 cycles at 25 AMPS @ 250 V AC,
200,000 cycles at 15 AMPS @ 250 V AC.

INSULATION RESISTANCE: 1,000 M ohm min.

DIELECTRIC STRENGTH: 1,000 Vrms min. @ sea level.

OPERATING TEMPERATURE: -67°F to 185°F (-55°C to 85°C).

OPERATING FORCE: 20 oz. (567 grams) max. SP models.
40 oz. (1134 grams) max. DP models at actuator button.

MOUNTING: Torque screws 3 in/lbs max.

MOUNTING NUT: 20 in/lbs max. torque

* Low Level=conditions where no arcing occurs during switching, i.e., 0.4 VA max. @ 20 V AC or DC max.

NOTE: Specifications and materials listed above are for switches with standard options. C&K does provide specific and custom switches at 30 AMPS @ 277 VAC. Please consult Customer Service Center.

Materials

SWITCH HOUSING: Heat resistant phenolic (UL 94V-0).

ACTUATOR BUTTON: Heat resistant phenolic (UL 94V-0).

SPRING: Copper alloy.

PIVOT: Brass alloy for models up to 15 AMPS.

Copper for 25 AMP models.

MOVABLE CONTACTS: Gold alloy for ratings 1 AMP or less.
Fine silver for ratings up to 15 AMPS. Silver alloy
for ratings of 25 AMPS.

STATIONARY CONTACTS: Gold alloy on brass base alloy
for ratings 1 AMP or less. Fine silver welded on brass base
alloy for ratings greater than 1 AMP up to 15 AMPS.
Fine silver welded on copper alloy for ratings 25 AMPS.

TERMINALS: Brass alloy for 1 AMP up to 15 AMPS.
Copper alloy for 25 AMPS.

Build-A-Switch

To order, simply select desired option from each category and place in the appropriate box. Available options are shown and described on pages J-78 through J-81. For additional options not shown in catalog, consult Customer Service Center.

A — — — — — — 4 A —

<p>Series</p> <p>A General Purpose Snap-acting Switches</p> <p>No. Poles</p> <p>S SP</p> <p>D DP</p> <p>Operating Force</p> <p>KH* 20 oz./567 grams</p> <p>PD** 30 oz./850 grams</p> <p>GG* 5 oz./142 grams</p> <p>PF** 40 oz./1134 grams</p>	<p>Electrical Rating</p> <p>C2 15 A, 125, 250 V AC; 3/4 HP, 125 V AC; 1 1/2 HP, 250 V AC</p> <p>F3 25 A, 125, 250 V AC; 1 HP, 125 V AC; 2 HP, 250 V AC; 2 A, 24 V DC</p> <p>F5 1 A, 125 V AC, 30 V DC</p>	<p>Actuator</p> <p>PO Pin plunger</p> <p>TO Lever</p> <p>AO Lever roller</p> <p>A2 Lever roller, high force</p> <p>BB Large red button</p> <p>B1 Large black button</p> <p>JO High overtravel plunger</p> <p>LO Leaf</p> <p>QO High operating position plunger</p> <p>WO Leaf roller</p>
<p>* Single Pole</p> <p>** Double Pole</p>	<p>Terminations</p> <p>4A .250" quick connect</p>	<p>Circuitry</p> <p>C DT</p> <p>W ST N.C.</p> <p>Y ST N.O.</p>



Snap-acting

A Series General Purpose Snap-acting Switches

ACTUATOR 

OPTION CODE	FIG.	DIM. A	DIM. B	DIM. C	DIM. D	DIM. E	DIM. F
P0	1	.50 (12,7)	.285 ± .030 (7,24 ± 0,76)	—	—	—	—
A0	3	1.38 (35,1)	.718 ± .062 (18,24 ± 1,57)	.375 dia. (9,53Ø)	.50 (12,7)	.50 (12,7)	—
A2	4	1.25 (31,8)	.718 ± .062 (18,24 ± 1,57)	.375 dia. (9,53Ø)	.50 (12,7)	—	—
B1	6	1.50 (38,1)	.40 ± 0.1 (10,2 ± 2,54)	.98 dia. (24,9Ø)	—	—	—
BB	6	1.50 (38,1)	.40 ± 0.1 (10,2 ± 2,54)	.98 dia. (24,9Ø)	—	—	—
J0	5	.50 (12,7)	.810 ± .030 (20,6 ± 0,8)	.38 (9,7)	.25 dia. (6,4Ø)	—	—
L0	2	1.62 (41,1)	.312 ± .062 (7,92 ± 1,57)	.50 (12,7)	—	—	—
Q0	5	.50 (12,7)	.670 ± .030 (17,02 ± 0,76)	.38 (9,6)	.25 dia. (6,4Ø)	—	—
T0	7	1.50 (38,1)	.318 ± .062 (8,08 ± 1,57)	.50 (12,7)	.50 (12,7)	—	—
W0	8	1.50 (38,1)	.801 ± .062 (20,34 ± 1,57)	.375 dia. (9,53Ø)	.50 (12,7)	—	—

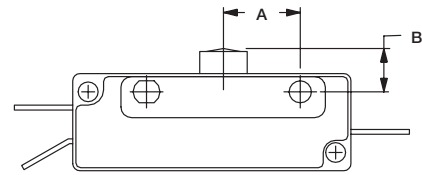


FIG. 1
High Overtravel Plunger

NOTE: The "H0" high overtravel plunger option provides .100 (2,54) min. overtravel and longer mechanical life (1,000,000 operations typical).

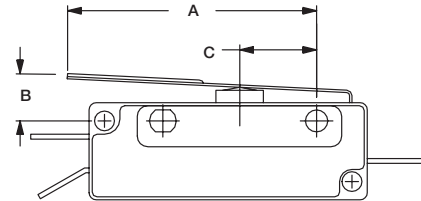


FIG. 2
Leaf

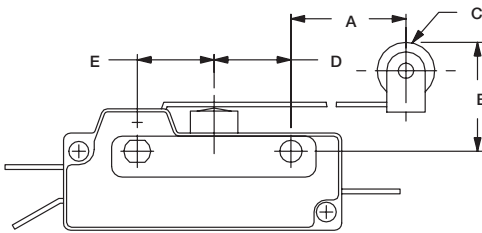


FIG. 3
Lever Roller

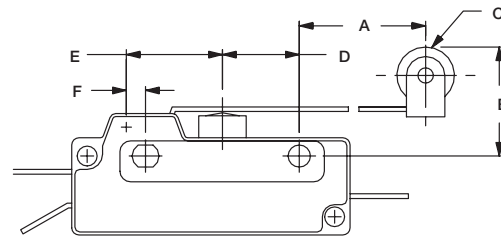


FIG. 4
Lever roller (High Force)

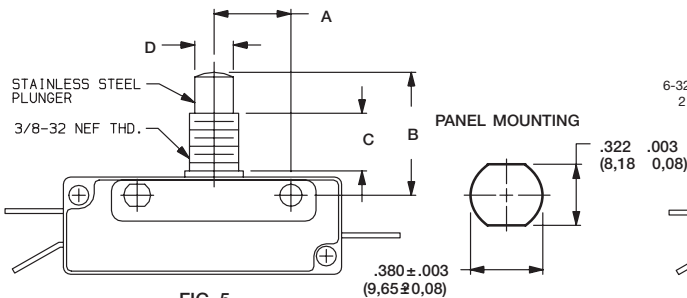


FIG. 5
High Overtravel Plunger

Torque 20 in/lbs max. (Nut)

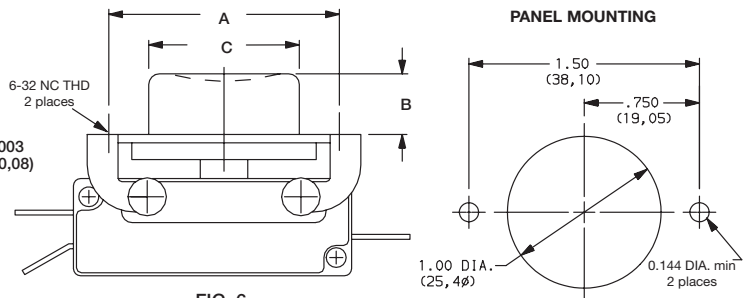


FIG. 6
B1 - Black Button
BB - Red Button

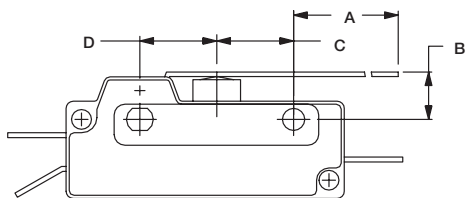


FIG. 7
Lever

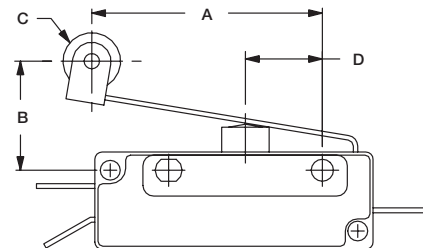
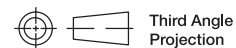


FIG. 8
Leaf Roller



Third Angle
Projection

Dimensions are shown: Inch (mm)
Specifications and dimensions subject to change

Snap-acting

A Series General Purpose Snap-acting Switches

ACTUATOR

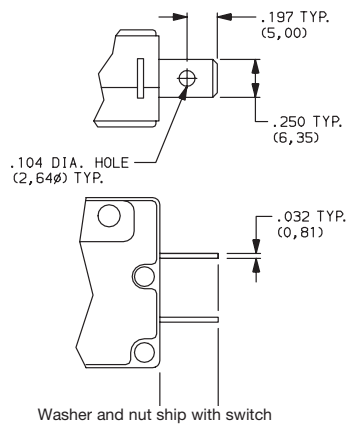
SWITCH CHARACTERISTICS

OPTION CODE	MAXIMUM OPERATING FORCE (OZ./GRAMS)				MINIMUM RELEASE FORCE (OZ./GRAMS)				MAXIMUM PRETRAVEL				MINIMUM OVERTRAVEL				OPERATING POSITION			
	GG S.P.	KH S.P.	PD D.P.	PF D.P.	GG S.P.	KH S.P.	PD D.P.	PF D.P.	GG S.P.	KH S.P.	PD D.P.	PF D.P.	GG S.P.	KH S.P.	PD D.P.	PF D.P.	GG S.P.	KH S.P.	PD D.P.	PF D.P.
A0	1.5 42.5	4 113	6 170	10 283	0.3 8.5	0.5 14	1 28		.312 (7,92)				312 (7,92)	.187 (4,75)		.718 (18,24)				
A2	1.5 42.5	4 113	6 170	10 283	0.4 11	0.5 14	1 28		.25 (6,4)				.14 (5,6)		.718 (18,24)					
B1	8 227	20 567	30 850	40 1134	1 28	3 85	6 170		.050 (1,27)				.050 (1,27)		—					
BB	8 227	20 567	30 850	40 1134	1 28	3 85	6 170		.050 (1,27)				.050 (1,27)		—					
J0	5 142	20 567	30 850	40 1134	1 28	3 85	6 170		.050 (1,27)				.187 (4,75)		—					
L0	3 85	12 340	18 510	22 624	0.5 14	1 28	2 56.7		.281 (7,14)				.062 (1,57)		.312 (7,92)					
P0	8 227	20 567	30 850	40 1134	1 28	3 85	6 170		.050 (1,27)				.050 (1,27)		—					
Q0	5 142	20 567	30 850	40 1134	1 28	3 85	6 170		.050 (1,27)				.050 (1,27)		—					
T0	1.5 42.5	4 113	6 170	10 283	0.3 8.5	0.5 14	1 28		.312 (7,92)				.187 (4,75)		312 (7,92)					
W0	3 85	12 340	18 510	22 624	0.5 14	1 28	2 56.7		.281 (7,14)				.062 (1,57)		.718 (18,24)					

NOTE: For basic switch operating forces, see page J-77.

TERMINATIONS

4A .250" QUICK CONNECT



NOTE: Terminals can be supplied at various angles. Other terminal styles can be supplied for special applications. Consult Customer Service Center for special requirements.

CIRCUITRY

C DT (Double Throw, Normally Open & Normally Closed)

W ST N.C. (Single Throw, Normally Closed)

Y ST N.O. (Single Throw, Normally Open)

NOTE: To select number of poles, see NO. POLES section, page J-56



Third Angle Projection

Dimensions are shown: Inches (mm)
Specifications and dimensions subject to change

Mouser Electronics

Authorized Distributor

Click to View Pricing, Inventory, Delivery & Lifecycle Information:

C&K Switches:

[ASKHC2B14AC](#) [ADPDC2T04AC](#) [ASKHC2J04AC](#) [ASKHC2A04AC](#) [ASKHC2BB4AC](#) [ASKHC2P04AC](#)
[ASKHC2T04AY](#) [ADPDC2W04AC](#) [ASKHC2W04AC](#) [ASKHF3B14AC](#) [ASKHC2T04AC](#) [ADPDC2L04AC](#)
[ASGGC2P04AC](#) [ADPDC2J04AC](#) [ADPDC2P04AC](#) [ADPDC2A04AC](#) [ADPDC2A24AC](#) [ADPDC2BB4AC](#)
[ADPDC2J04AY](#) [ADPDC2P04AY](#) [ADPDC2T04AY](#) [ADPFF3J04AC](#) [ADPFF3J04AW](#) [ADPFF3J04AY](#) [ADPFF3P04AC](#)
[ADPFF3P04AY](#) [ADPFF3T04AC](#) [ASGGF5A04AC](#) [ASGGF5BB4AY](#) [ASGGF5J04AC](#) [ASGGF5J04AY](#) [ASGGF5L04AC](#)
[ASGGF5P04AC](#) [ASGGF5Q04AC](#) [ASKHC2B14AY](#) [ASKHC2BB4AY](#) [ASKHC2J04AW](#) [ASKHC2J04AY](#)
[ASKHC2L04AC](#) [ASKHC2L04AW](#) [ASKHC2Q04AC](#) [ASKHF3A04AC](#) [ASKHF3A04AY](#) [ASKHF3B14AY](#) [ASKHF3BB4AC](#)
[ASKHF3J04AC](#) [ASKHF3J04AW](#) [ASKHF3J04AY](#) [ASKHF3P04AC](#) [ASKHF3P04AY](#) [ASKHF3T04AC](#) [ASKHF3T04AY](#)
[ASKHF3W04AC](#) [ADPFF3BB4AC](#) [ASKHF3BB4AY](#) [ADPFF3B14AC](#) [ASKHF3L04AC](#) [ASKHF3L04AY](#)
[ADPFF3P04AW](#) [ADPFF3Q04AC](#) [ASKHF3L04AW](#) [ASKHC2A24AY](#) [ADPFC2W04AC](#) [ASKHC2A24AW](#)
[ASGGF5J04AW](#) [ASKHF3T04AW](#) [ADPFC2T04AC](#) [ASGGF5T04AC](#) [ASKHF3A24AC](#) [ASKHF3Q04AY](#)
[ASKHF3Q04AC](#) [ADPFC2W04AW](#) [ADPDC2B14AC](#) [ASKHF3Q04AW](#) [ASKHF3A24AY](#) [ASKHC2P04AY](#)
[ASKHF5T04AC](#) [ASKHF5T04AW](#) [ADPDF5W04AC](#) [ASKHC2L04AY](#) [AD03036](#) [ADPFC2J04AC](#) [ADPFF3L04AY](#)
[ADPDF3J04AC](#) [ASKHC2A24AC](#)