

PART  
NAME

CABLE RING

PART  
No.

CM-1220

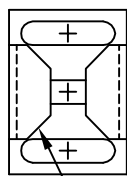
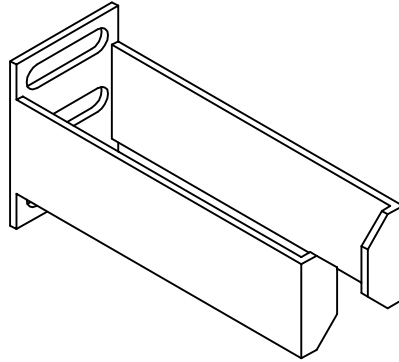
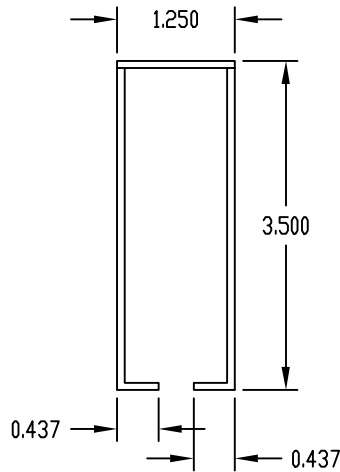
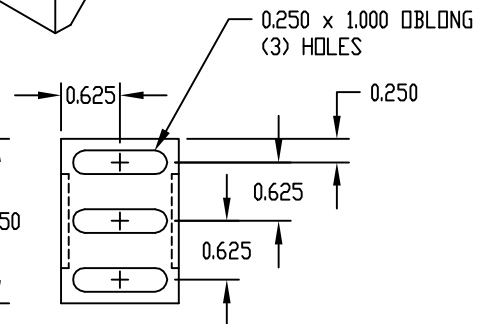
MATERIAL: 14 GA. STEELFINISH: SMOOTH BLACK

SUPPLIED WITH:

QTY. (2) #10-32 x 5/8 LG. SCREWS

QTY. (2) #12-24 x 1/2 LG. SCREWS

QTY. (2) #12-24 HEX NUTS

0.250 x 0.250 CHAMFER  
(4) PLACESPART  
NAME

CABLE RING

PART  
No.

CM-1221

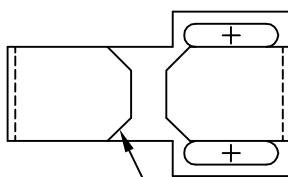
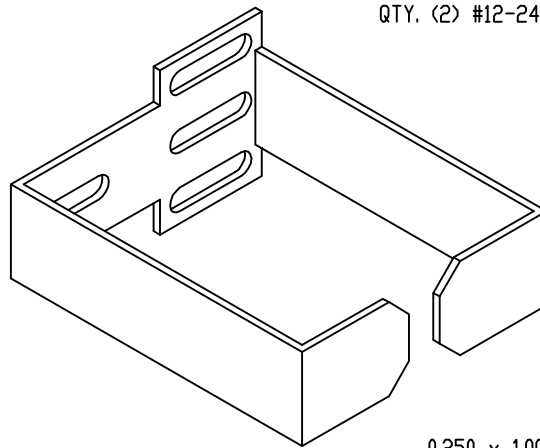
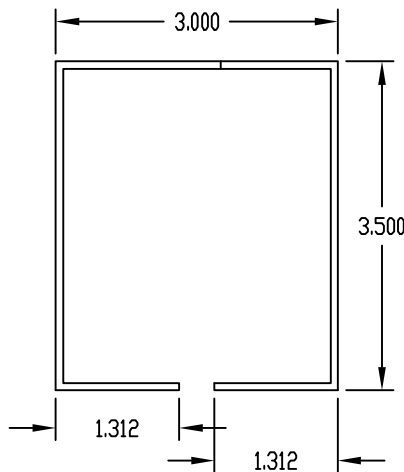
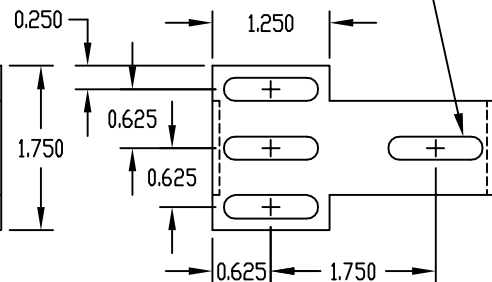
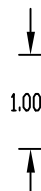
MATERIAL: 14 GA. STEELFINISH: SMOOTH BLACK

SUPPLIED WITH:

QTY. (2) #10-32 x 5/8 LG. SCREWS

QTY. (2) #12-24 x 1/2 LG. SCREWS

QTY. (2) #12-24 HEX NUTS

0.250 x 0.250 CHAMFER  
(4) PLACES

# Mouser Electronics

Authorized Distributor

Click to View Pricing, Inventory, Delivery & Lifecycle Information:

[Bud Industries:](#)

[CM-1221](#) [CM-1220](#)