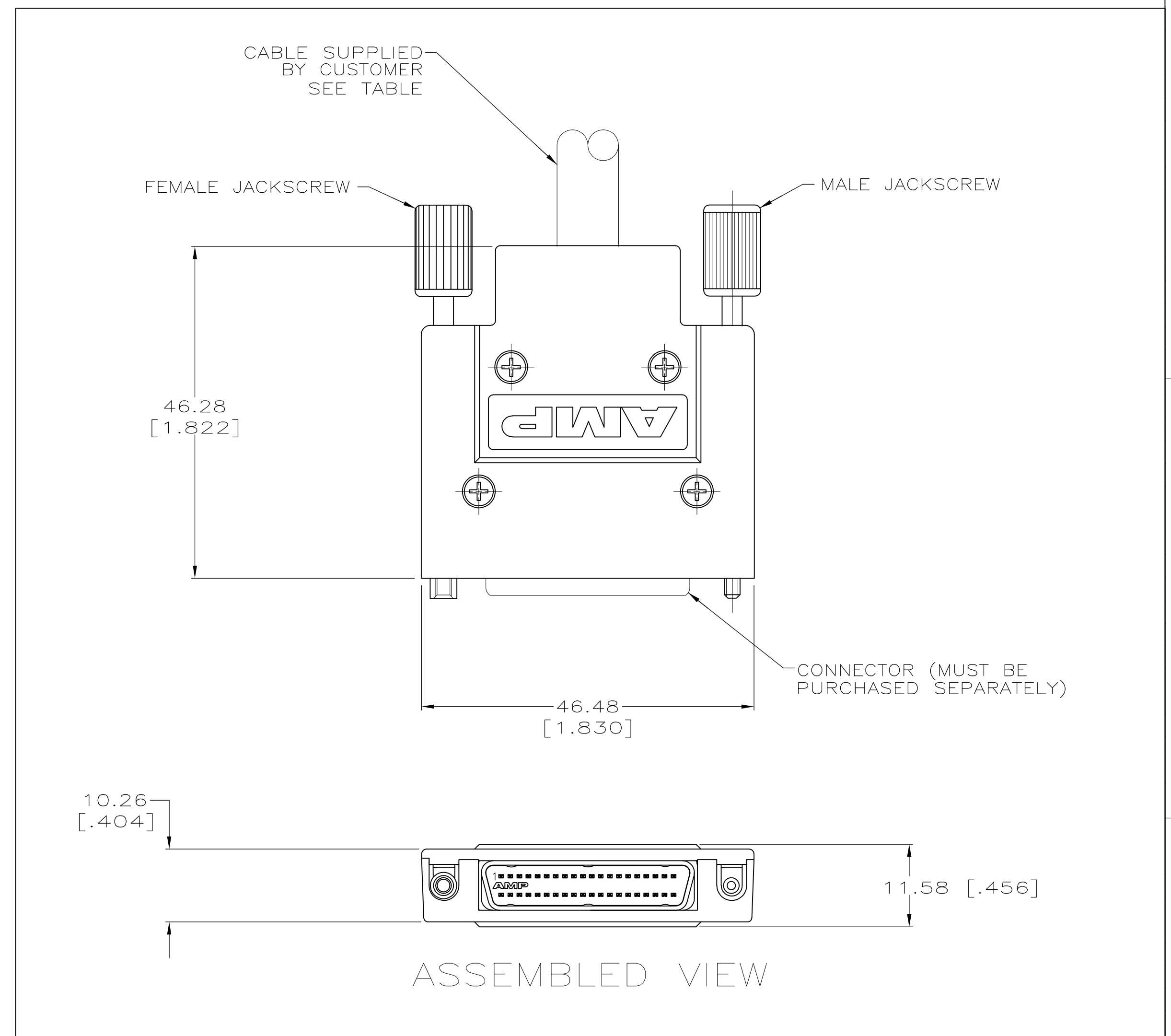
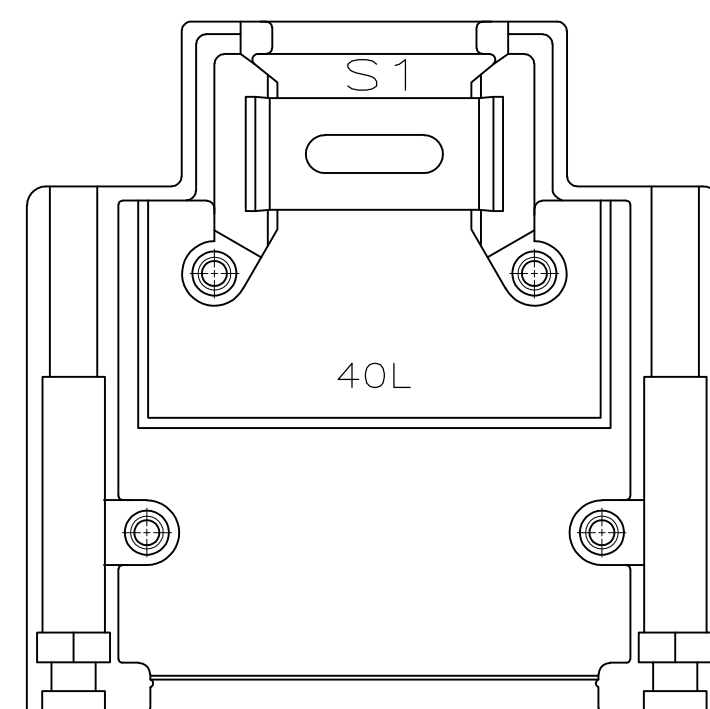
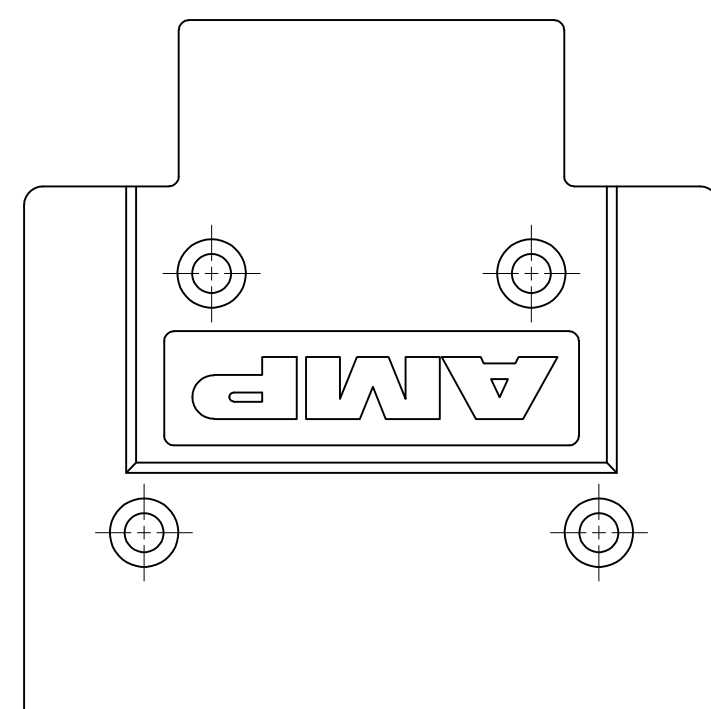
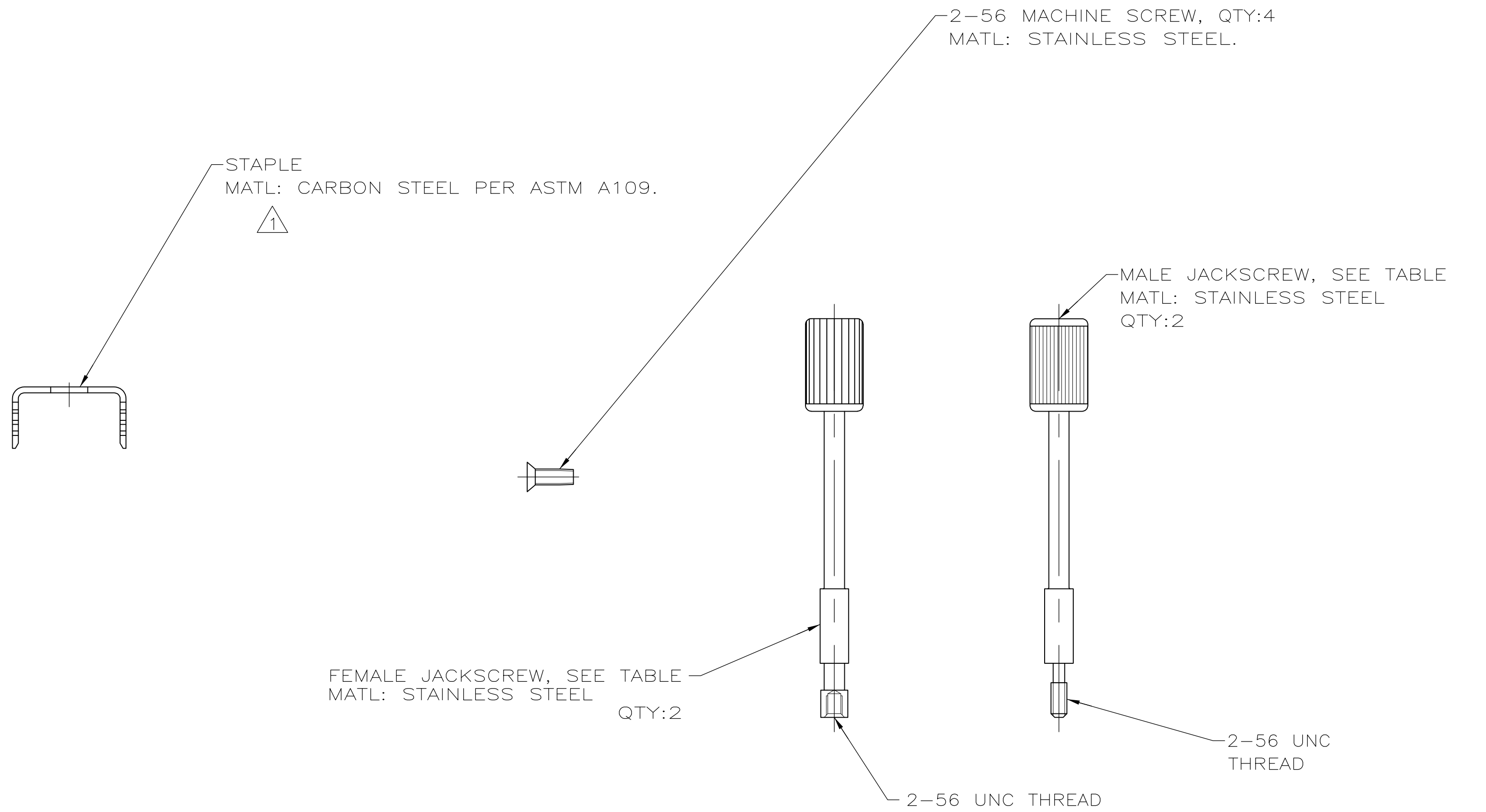




REVISIONS					
P	LTR	DESCRIPTION	DATE	OWN	APVD
	B	REVISED PER ECO-16-005483	13APR2016	AP	DG



FEMALE	8.89 [.350]	5787543-9
FEMALE	10.16 [.400]	5787543-8
FEMALE	11.43 [.450]	5787543-7
MALE	8.89 [.350]	5787543-3
MALE	10.16 [.400]	5787543-2
MALE	11.43 [.450]	5787543-1
JACKSCREW	CABLE MAX DIA.	PART NO.

THIS DRAWING IS A CONTROLLED DOCUMENT.		DWN: G. PETERS 26AUG05 GRW: S. SHUEY 26AUG05 APD: M. WALMSLEY 26AUG05		 TE Connectivity	
DIMENSIONS: mm		TOLERANCES UNLESS OTHERWISE SPECIFIED: 0 PL/C ± — 1 PL/C ± 0.38 [015] 2 PL/C ± — 3 PL/C ± — 4 PL/C ± — ANGLES ± —		NAME: BACKSHELL KIT, UNASSEMBLED, 40 POSITION .050 SERIES AMPLIMITE PRODUCT SPEC: — APPLICATION SPEC: —	
		WEIGHT: 0.000000		SIZE: A1 CAGE CODE: 00779 DRAWING NO: C-578543	
MATERIAL: — FINISH: —		CUSTOMER DRAWING		RESTRICTED TO: — SCALE: 1:1 SHEET: 1 OF 1 REV: B	

Mouser Electronics

Authorized Distributor

Click to View Pricing, Inventory, Delivery & Lifecycle Information:

[TE Connectivity:](#)

[5787543-3](#)